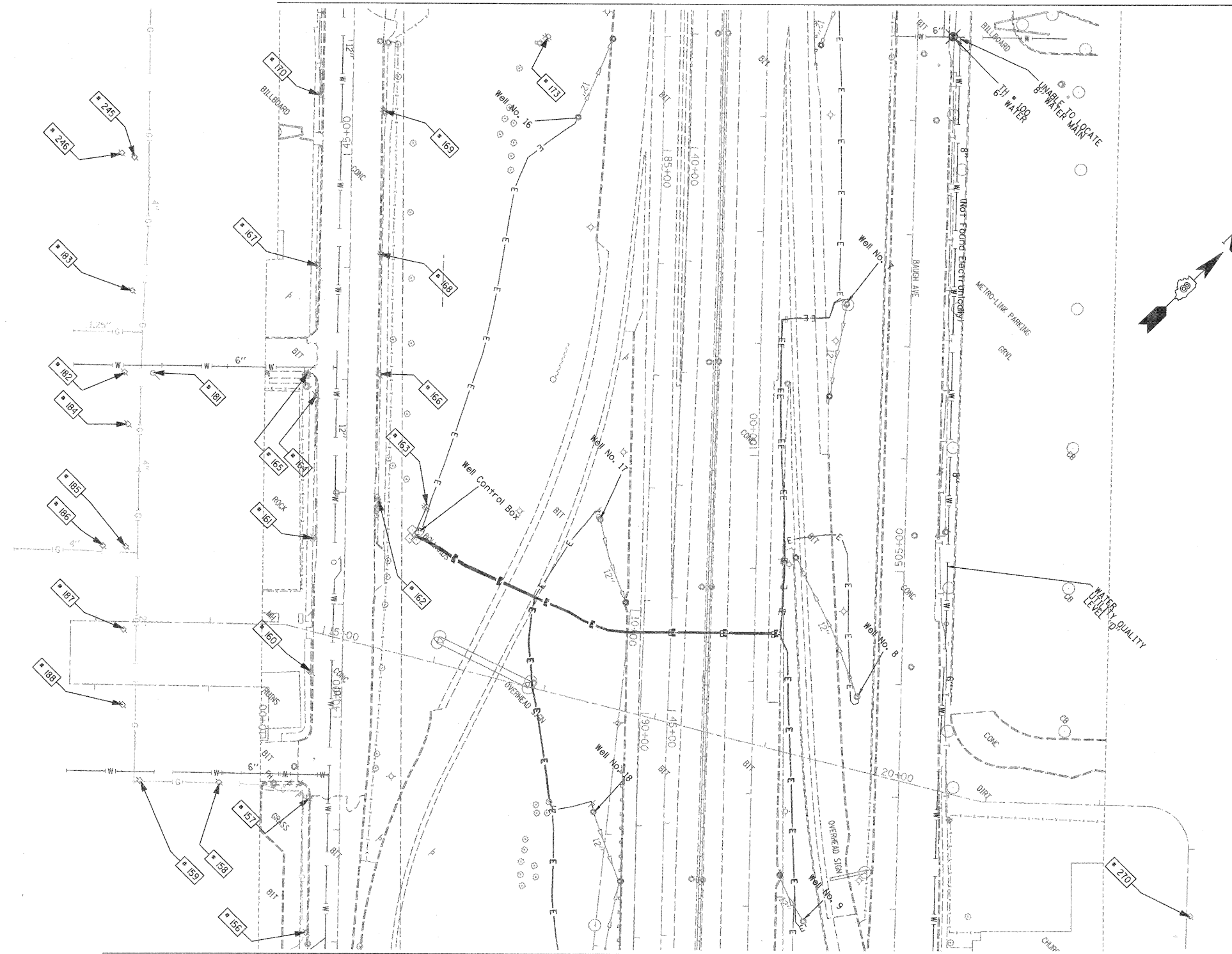
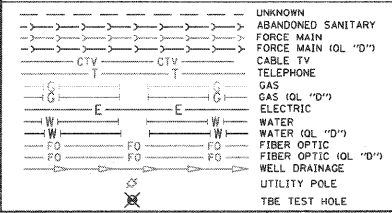


MATCH TO PAGE 18



MATCH TO PAGE 20

TBE Pole Number	Approximate Location	Identification on Pole	Utilities Attached to Poles	Utility Owners	Notes: Additional Items Attached to Poles
156	169' W. OF 15TH ST. CL.	728411	ELECTRIC, TELEPH.	AT&T	2 LIGHTS
157	SE SIDE OF 14TH ST.	728410 1404	ELECTRIC, TELEPH.	AT&T	LIGHT
158	107' S. OF ST. CLAIR CL.	728412 210349	ELECTRIC, TELEPH.	AT&T, AMEREN ELECTRIC	LIGHT, GUY TO N.
159	176' S. OF ST. CLAIR CL.	728413	ELECTRIC, TELEPH.	AT&T, AMEREN ELECTRIC	LIGHT
160	82' W. OF 14TH ST. CL.	NO TAG	TELEPH.	AT&T	
161	201' W. OF 14TH ST. CL. S. SIDE OF ST. CLAIR	728407	ELECTRIC, TELEPH.	AT&T, AMEREN ELECTRIC	2 LIGHTS
162	238' W. OF 14TH ST. CL. N. SIDE OF ST. CLAIR	728407	ELECTRIC	AMEREN ELECTRIC	
163	236' W. OF 14TH ST. CL. N. SIDE OF ST. CLAIR	SEE NOTE	ELECTRIC	AMEREN ELECTRIC	TAG TOO FAR IN FENCE
164	329' W. OF 14TH ST. CL. S. SIDE OF ST. CLAIR	NO TAG	TELEPH.	AT&T	
165	SE SIDE VERONICA & ST. CLAIR	728406	ELECTRIC	AMEREN ELECTRIC	2 LIGHTS
166	348' W. OF 14TH ST. CLAIR N. SIDE OF ST. CLAIR	728405	ELECTRIC	AMEREN ELECTRIC	
167	83' W. OF VERONICA CL. S. SIDE OF ST. CLAIR	NO TAG	TELEPH.	AT&T	
168	83' W. OF VERONICA CL. N. SIDE OF ST. CLAIR	728404	ELECTRIC	AMEREN ELECTRIC	GUY
169	217' W. OF VERONICA CL. N. SIDE OF ST. CLAIR	728403	ELECTRIC	AMEREN ELECTRIC	
170	231' W. OF VERONICA CL. S. SIDE OF ST. CLAIR	NO TAG	TELEPH.	AT&T	GUY TO W., PH DROP
173	250' W. OF VERONICA CL. N. SIDE OF ST. CLAIR	728402	ELECTRIC	AMEREN ELECTRIC	TRANSFORMER
181	171' S. OF ST. CLAIR CL.	728420	NO UTILITIES		STRAIN FOR POLE #182 ON VERONICA ST.
182	147' S. OF ST. CLAIR CL.	728419	ELECTRIC, TELEPH.	AT&T, AMEREN ELECTRIC	
183	56' W. OF VERONICA CL. S. SIDE OF ST. CLAIR	728421	ELECTRIC, TELEPH.	AT&T, AMEREN ELECTRIC	TRANSFORMER
184	84' E. OF VERONICA CL. S. SIDE OF ST. CLAIR	728418 1352	ELECTRIC, TELEPH.	AT&T, AMEREN ELECTRIC	TRANSFORMER
185	176' E. OF VERONICA CL. S. SIDE OF ST. CLAIR	728416 1360	ELECTRIC, TELEPH.	AT&T, AMEREN ELECTRIC	
186	22' S. OF POLE #185 S. SIDE OF ST. CLAIR	728417	ELECTRIC, TELEPH.	AT&T, AMEREN ELECTRIC	
187	243' E. OF VERONICA CL. S. SIDE OF ST. CLAIR	728415	ELECTRIC, TELEPH.	AT&T, AMEREN ELECTRIC	PH CUT AT POLE
188	308' E. OF VERONICA CL. S. SIDE OF ST. CLAIR	1370	ELECTRIC	AMEREN ELECTRIC	2 GUY S
245	175' SW ST. CLAIR AT STA 45+00	728469	ELECTRIC, TELEPH.	AT&T, AMEREN ELECTRIC	
246	190' SW ST. CLAIR AT STA. 45+10	728470	ELECTRIC, TELEPH, CATV	AMEREN ELECTRIC, AT&T, CHARTER CABLE	GUY TO N.
270	80' NW POLE #269	727629	ELECTRIC, TELEPH.	AT&T, AMEREN ELECTRIC	GUY TO WEST, TRANSFORMER



Utilities shown in color on these plans as depicted in the legend have been investigated by TBE Group, Inc in accordance with SUE Industry Standards. All other information shown has been provided to TBE Group, Inc by others. TBE's SUE field investigation was finished on 5/22/09. Changes to utilities after this date may have been made and therefore may result in variances from this plan. Consideration should be given to updating this plan if deemed advisable prior to final design and construction.

ALL UTILITIES SHOWN QUALITY LEVEL "B" UNLESS NOTED OTHERWISE.

Utility Quality Level "A" : Test Hole
 Utility Quality Level "B" : Designating
 Utility Quality Level "C" : Research with Survey
 Utility Quality Level "D" : Records Research

TBE GROUP INC.
 CIVIL ENGINEERING • TRANSPORTATION • ENVIRONMENTAL
 PLANNING • UTILITY ENGINEERING/LOCATING

Checked By: _____ Date: _____

TBE Job No. IL09500601, 602, 603, 604, 607, 608, 609
 SUE Plan Page: 19 of 35

F.A.I. RTE.	SECTION	COUNTY	TOTAL SHEETS	SHEET NO.
		St. Clair	629	306
PTB NO. 147-038				
FED. ROAD DIST. NO. ILLINOIS Job No.: D-98-061-08				

FILE NAME =	USER NAME =	DESIGNED EG, JP, LP	REVISED 1/28/09 - 8/26/09 ADDED TEST HOLES #60-108
#FILE#	PLOT SCALE = 1" = 50'	DRAWN KLC	CHECKED JB
	PLOT DATE = #DATE#	DATE 9/15/09	REVISED

STATE OF ILLINOIS
 DEPARTMENT OF TRANSPORTATION

Mississippi River Bridge Project

SCALE: SHEET NO. STA. TO STA.