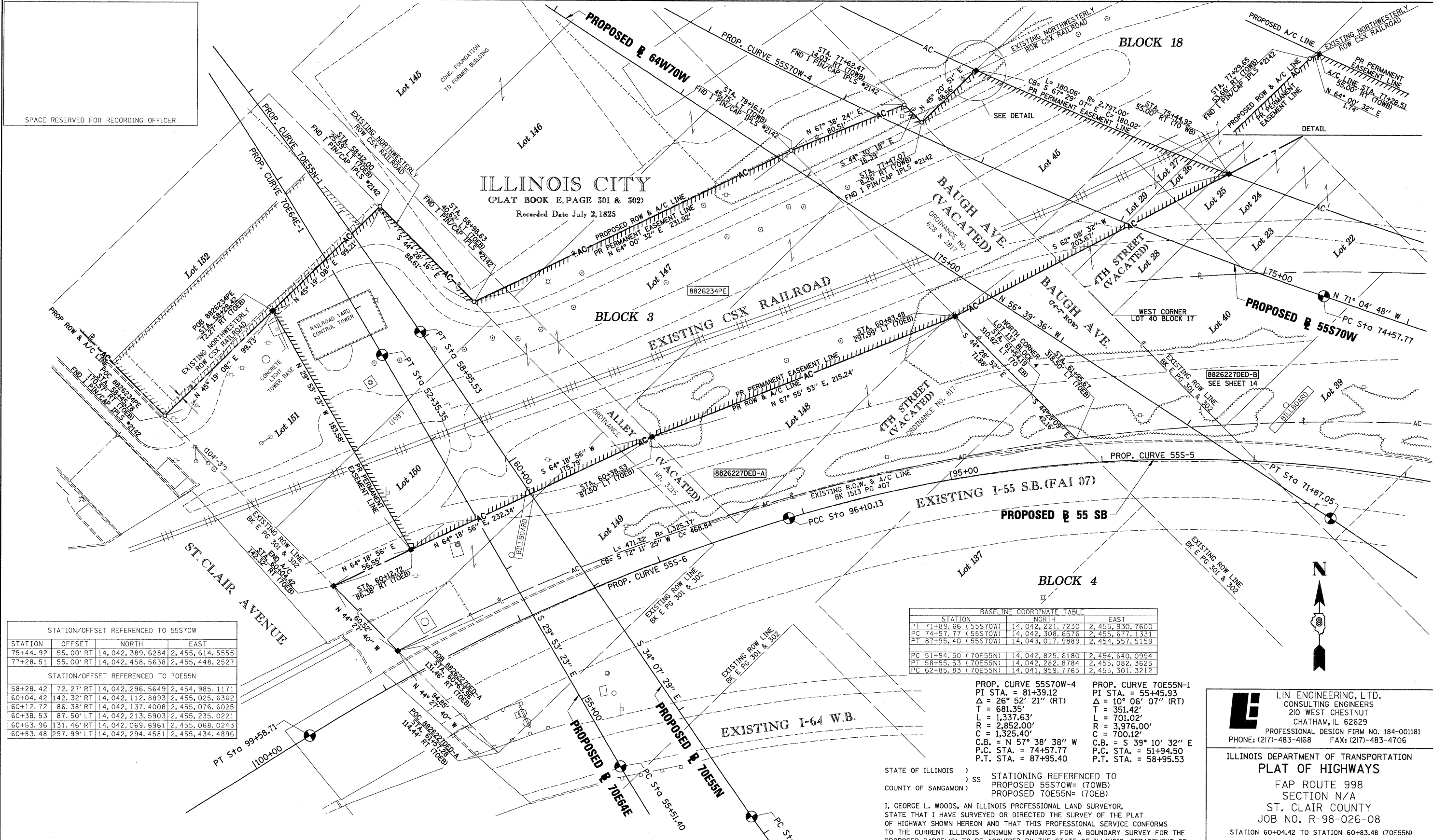


PART OF THE SW 14 OF SECTION 7, T2N, R9W OF THE 3RD PM, ST. CLAIR COUNTY, ILLINOIS



SPACE RESERVED FOR RECORDING OFFICER

ILLINOIS CITY  
(PLAT BOOK E, PAGE 301 & 302)  
Recorded Date July 2, 1825

STATION/OFFSET REFERENCED TO 55S70W				
STATION	OFFSET	NORTH	EAST	
75+44.92	55.00' RT	14,042,389.6284	2,455,614.5555	
77+28.51	55.00' RT	14,042,458.5638	2,455,448.2527	
STATION/OFFSET REFERENCED TO 70E55N				
STATION	OFFSET	NORTH	EAST	
58+28.42	72.27' RT	14,042,296.5649	2,454,985.1171	
60+04.42	142.32' RT	14,042,112.8893	2,455,025.6362	
60+12.72	86.38' RT	14,042,137.4008	2,455,076.6025	
60+38.53	87.50' LT	14,042,213.5903	2,455,235.0221	
60+63.96	131.46' RT	14,042,069.6961	2,455,068.0243	
60+83.48	297.99' LT	14,042,294.4581	2,455,434.4896	

BASELINE COORDINATE TABLE		
STATION	NORTH	EAST
PT 71+89.66 (55S70W)	14,042,221.7230	2,455,930.7600
PC 74+57.77 (55S70W)	14,042,308.6576	2,455,677.1331
PT 87+95.40 (55S70W)	14,043,017.9889	2,454,557.5159
PC 51+94.50 (70E55N)	14,042,825.6180	2,454,640.0994
PT 58+95.53 (70E55N)	14,042,282.8784	2,455,082.3625
PC 62+85.83 (70E55N)	14,041,959.7765	2,455,301.3212

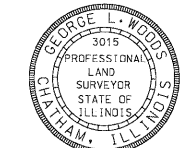
PROP. CURVE 55S70W-4  
PI STA. = 81+39.12  
Δ = 26° 52' 21" (RT)  
T = 681.35'  
L = 1,337.63'  
R = 2,852.00'  
C = 1,325.40'  
C.B. = N 57° 38' 38" W  
P.C. STA. = 74+57.77  
P.T. STA. = 87+95.40

PROP. CURVE 70E55N-1  
PI STA. = 55+45.93  
Δ = 10° 06' 07" (RT)  
T = 351.42'  
L = 701.02'  
R = 3,976.00'  
C = 700.12'  
C.B. = S 39° 10' 32" E  
P.C. STA. = 51+94.50  
P.T. STA. = 58+95.53

STATE OF ILLINOIS )  
COUNTY OF SANGAMON )  
SS STATIONING REFERENCED TO  
PROPOSED 55S70W= (70WB)  
PROPOSED 70E55N= (70EB)

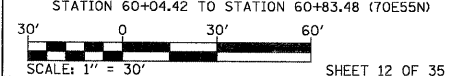
I, GEORGE L. WOODS, AN ILLINOIS PROFESSIONAL LAND SURVEYOR,  
STATE THAT I HAVE SURVEYED OR DIRECTED THE SURVEY OF THE PLAT  
OF HIGHWAY SHOWN HEREON AND THAT THIS PROFESSIONAL SERVICE CONFORMS  
TO THE CURRENT ILLINOIS MINIMUM STANDARDS FOR A BOUNDARY SURVEY FOR THE  
PROPOSED PARCEL(S) TO BE ACQUIRED BY THE STATE OF ILLINOIS, DEPARTMENT OF  
TRANSPORTATION, SHOWN HEREON.

DATED \_\_\_\_\_  
GEORGE L. WOODS, PLS NO. 3015  
LICENSE EXPIRATION DATE: 11/30/2010



**LI** LIN ENGINEERING, LTD.  
CONSULTING ENGINEERS  
210 WEST CHESTNUT  
CHATHAM, IL 62629  
PROFESSIONAL DESIGN FIRM NO. 184-001181  
PHONE: (217)-483-4168 FAX: (217)-483-4706

ILLINOIS DEPARTMENT OF TRANSPORTATION  
PLAT OF HIGHWAYS  
FAP ROUTE 998  
SECTION N/A  
ST. CLAIR COUNTY  
JOB NO. R-98-026-08  
STATION 60+04.42 TO STATION 60+83.48 (70E55N)



ILLINOIS DEPARTMENT OF TRANSPORTATION  
DIVISION OF HIGHWAYS/REGION 5/DISTRICT 8  
1102 EASTPORT PLAZA DRIVE  
COLLINGSVILLE, ILLINOIS 62234-6198

F.A.P. RTE.	SECTION	COUNTY	TOTAL SHEETS	SHEET NO.
998	N/A	ST. CLAIR	629	316

CONTRACT NO. \_\_\_\_\_

PARCEL NO.	OWNER	TOTAL HOLDING ACRES	ACQUISITION BY DEDICATION		REMAINDER ACRES	EASEMENTS		PERMANENT TAX NUMBER	PROPERTY ACQUIRED BY
			GROSS ACRES	SQ. FT.		PE = PERMANENT ACRES	TE = TEMPORARY SQ. FT.		
8826234PE	CSX TRANSPORTATION, INC. BK X PG XXX TITLE REPORT NO. SC-6176.0	1				PE=1,8487	PE=80,529	02-07.0-500-004	
88262270ED	CSX TRANSPORTATION, INC. PB G PG49, BK 37 PG 609, BK 15 PG 319 TITLE REPORT NO. SC-5633.2	0.7255 (A) 1.1548 (B)	0.7255 (A) 1.1548 (B)	31,603 (A) 50,304 (B)	0.7255 (A) 1.1548 (B)			02-07.0-503-001 02-07.0-503-002	

\* SEE TOTAL HOLDING AREA SOURCE TABLE ON SHEET 2

PLOT DATE = 10/19/2009  
FILE NAME = #FILES#  
PLOT SCALE = #SCALES#  
USER NAME = #USERS#