

"A"  
WALTER PLACE  
(PLAT BOOK 27 PAGE 60  
RECORDED AUGUST 2nd 1926)

"B"  
SUBDIVISION OF PARTS OF  
LOTS 211, 212, 213, 214 AND 215  
BLOCK 45 ILLINOIS CITY (NOW  
PART OF EAST ST. LOUIS ILL.)  
(PLAT BOOK P PAGE 21 RECORDED JULY 6th 1909)

"C"  
O'CONNOR'S SUBDIVISION  
OF LOT 74, BLOCK 36  
ILLINOIS CITY SUBDIVISION  
EAST ST. LOUIS, ILL.  
(PLAT BOOK X PAGE 9 RECORDED MAY 21st 1920)

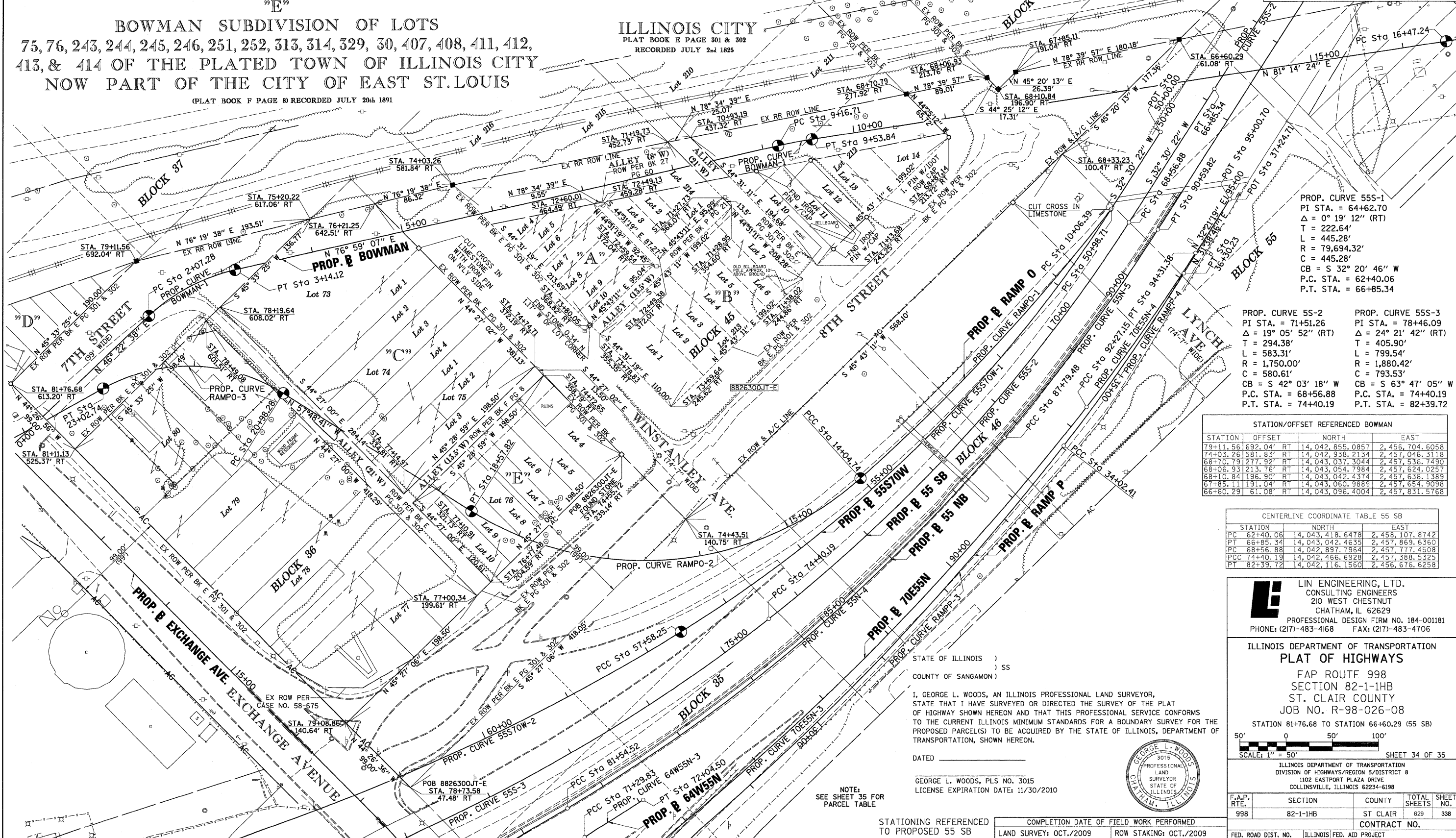
"D"  
ILLINOIS CITY SUBDIVISION  
PART OF LOTS 69 & 70 OF BLOCK 37  
(PLAT BOOK L PAGE 56) RECORDED APRIL 17th 1906

"E"  
BOWMAN SUBDIVISION OF LOTS  
75, 76, 243, 244, 245, 246, 251, 252, 313, 314, 329, 30, 407, 408, 411, 412,  
413, & 414 OF THE PLATED TOWN OF ILLINOIS CITY  
NOW PART OF THE CITY OF EAST ST. LOUIS  
(PLAT BOOK F PAGE 8) RECORDED JULY 20th 1891

ILLINOIS CITY  
PLAT BOOK E PAGE 501 & 502  
RECORDED JULY 2nd 1825



SPACE RESERVED FOR RECORDING OFFICER



PROP. CURVE 55S-1  
PI STA. = 64+62.70  
Δ = 0° 19' 12" (RT)  
T = 222.64'  
L = 445.28'  
R = 79,694.32'  
C = 445.28'  
CB = S 32° 20' 46" W  
P.C. STA. = 62+40.06  
P.T. STA. = 66+85.34

PROP. CURVE 55S-2  
PI STA. = 71+51.26  
Δ = 19° 05' 52" (RT)  
T = 294.38'  
L = 583.31'  
R = 1,750.00'  
C = 580.61'  
CB = S 42° 03' 18" W  
P.C. STA. = 68+56.88  
P.T. STA. = 74+40.19

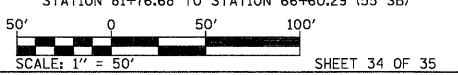
PROP. CURVE 55S-3  
PI STA. = 78+46.09  
Δ = 24° 21' 42" (RT)  
T = 405.90'  
L = 799.54'  
R = 1,880.42'  
C = 793.53'  
CB = S 63° 47' 05" W  
P.C. STA. = 74+40.19  
P.T. STA. = 82+39.72

STATION/OFFSET REFERENCED BOWMAN				
STATION	OFFSET	NORTH	EAST	
79+11.56	692.04' RT	14,042,855.0857	2,456,704.6058	
74+03.26	581.83' RT	14,042,938.2134	2,457,046.3118	
68+70.79	277.92' RT	14,043,037.3044	2,457,536.7490	
68+06.93	213.76' RT	14,043,054.7984	2,457,624.0257	
68+10.84	196.90' RT	14,043,042.4374	2,457,636.1389	
67+85.11	191.04' RT	14,043,060.9889	2,457,654.9098	
66+60.29	61.08' RT	14,043,096.4004	2,457,831.5768	

CENTERLINE COORDINATE TABLE 55 SB			
STATION	NORTH	EAST	
PC 62+40.06	14,043,418.6478	2,458,107.8742	
PT 66+85.34	14,043,042.4635	2,457,869.6360	
PC 68+56.88	14,042,897.7964	2,457,777.4508	
PCC 74+40.19	14,042,466.6928	2,457,388.5325	
PT 82+39.72	14,042,116.1560	2,456,676.6258	

**LIN ENGINEERING, LTD.**  
CONSULTING ENGINEERS  
210 WEST CHESTNUT  
CHATHAM, IL 62629  
PROFESSIONAL DESIGN FIRM NO. 184-001181  
PHONE: (217)-483-4168 FAX: (217)-483-4706

ILLINOIS DEPARTMENT OF TRANSPORTATION  
**PLAT OF HIGHWAYS**  
FAP ROUTE 998  
SECTION 82-1-1HB  
ST. CLAIR COUNTY  
JOB NO. R-98-026-08  
STATION 81+76.68 TO STATION 66+60.29 (55 SB)



F.A.P. RTE.	SECTION	COUNTY	TOTAL SHEETS	SHEET NO.
998	82-1-1HB	ST CLAIR	629	338

CONTRACT NO. \_\_\_\_\_

STATE OF ILLINOIS )  
                                  ) SS  
COUNTY OF SANGAMON )

I, GEORGE L. WOODS, AN ILLINOIS PROFESSIONAL LAND SURVEYOR,  
STATE THAT I HAVE SURVEYED OR DIRECTED THE SURVEY OF THE PLAT  
OF HIGHWAY SHOWN HEREON AND THAT THIS PROFESSIONAL SERVICE CONFORMS  
TO THE CURRENT ILLINOIS MINIMUM STANDARDS FOR A BOUNDARY SURVEY FOR THE  
PROPOSED PARCEL(S) TO BE ACQUIRED BY THE STATE OF ILLINOIS, DEPARTMENT OF  
TRANSPORTATION, SHOWN HEREON.

DATED \_\_\_\_\_  
GEORGE L. WOODS, PLS NO. 3015  
LICENSE EXPIRATION DATE: 11/30/2010



NOTE:  
SEE SHEET 35 FOR  
PARCEL TABLE

STATIONING REFERENCED TO PROPOSED 55 SB  
COMPLETION DATE OF FIELD WORK PERFORMED  
LAND SURVEY: OCT./2009 ROW STAKING: OCT./2009

PLOT DATE = 10/19/2009  
FILE NAME = #FILES#  
PLOT SCALE = #SCALE#  
USER NAME = #USER#