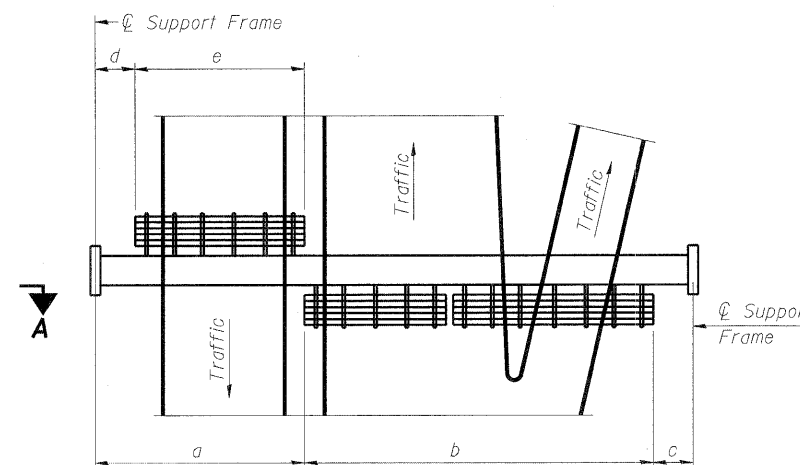


**TYPICAL FRONT ELEVATION**

With lights and handrail omitted for clarity.  
For Section B-B, see Base Sheet OS-A-10.



**PLAN WALKWAY AND HANDRAIL SKETCH**  
(Road plan beneath truss varies)

**BRACKET TABLE**

WF(A-N)4x1.79 or WF(A-N)4x3.06 ASTM B308, Alloy 6061-T6		
Sign Width		Number Brackets Required
Greater Than	Less Than or Equal To	
	8'-0"	2
8'-0"	14'-0"	3
14'-0"	20'-0"	4
20'-0"	26'-0"	5
26'-0"	32'-0"	6

**Notes:**

\* Space walkway brackets WF(A-N)4x3.06 and sign brackets WF(A-N)4x1.79 for efficiency and within limits shown:

f = 12" maximum, 4" minimum (End of sign to center of nearest bracket)

g = 12" maximum, 4" minimum (End of walkway grating to center of nearest support bracket)

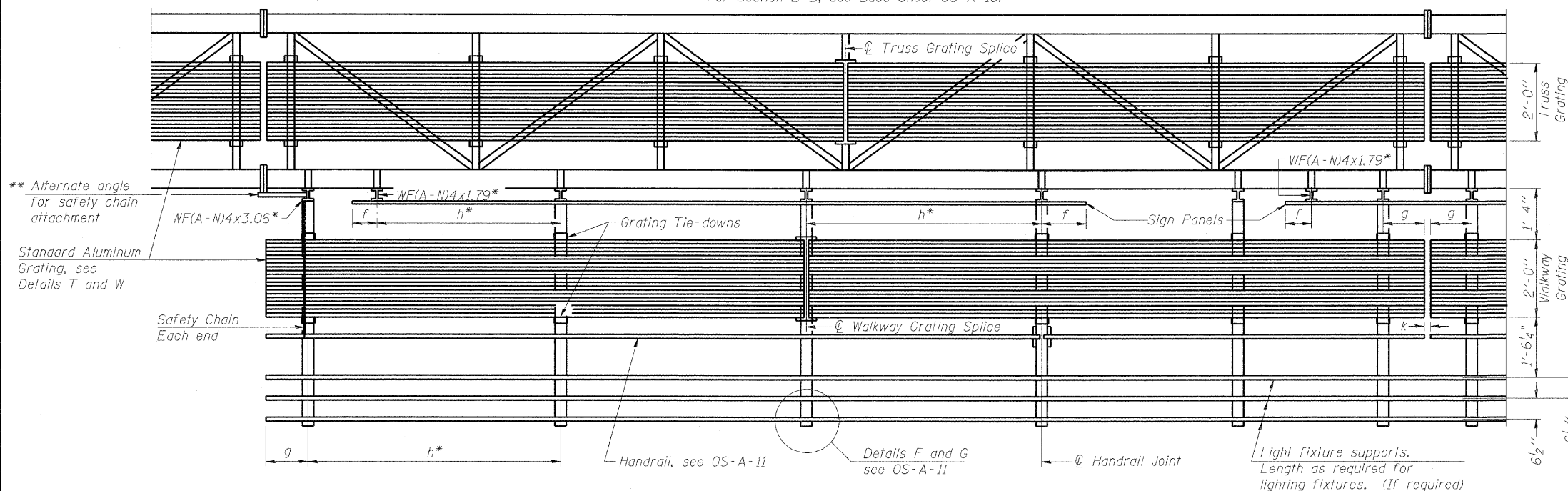
h = 6'-0" maximum (center to center of sign and/or walkway support brackets, WF(A-N)4x1.79 or WF(A-N)4x3.06)

k = 2" maximum gap between adjacent walkway grating sections and handrail ends

\*\* If walkway bracket at safety chain location is behind sign, add angle to bracket, see Alternate Safety Chain Attachment on Base Sheet OS-A-11.

For Details T and W, Section B-B and Grating Splice Details see Base Sheet OS-A-10.

For Handrail Details see Base Sheet OS-A-11.



**SECTION A-A**

Handrail and walkway shall span a minimum of three brackets between splices and/or gap joints.  
Place all sign and walkway brackets as close to panel points as practical.  
Handrail joints, grating, and light support splices placed as needed.

Structure Number	Station	a	b	c	d	e	Walkway Grating and Handrail Lengths
8S0821055R003.1	88+00.00	11.5'	53.0'	12.5'	-	-	53.0'
8S0821055L003.2	68+75.00	1.5'	60.0'	9.5'	-	-	60.0'
8S0821055L003.0	78+19.81	2.0'	45.0'	24.0'	-	-	45.0'
8S0821064L003.0	110+12.00	14.0'	66.5'	27.5'	-	-	66.5'

Truss grating to facilitate inspection shall run full length (center to center of support frames) ±12" on overhead trusses.  
Cost of truss grating is included in "Overhead Sign Structure".

Walkway and Truss Grating width dimensions are nominal and may vary ±1/2" based on available standard widths.

OS-A-9

7-1-10