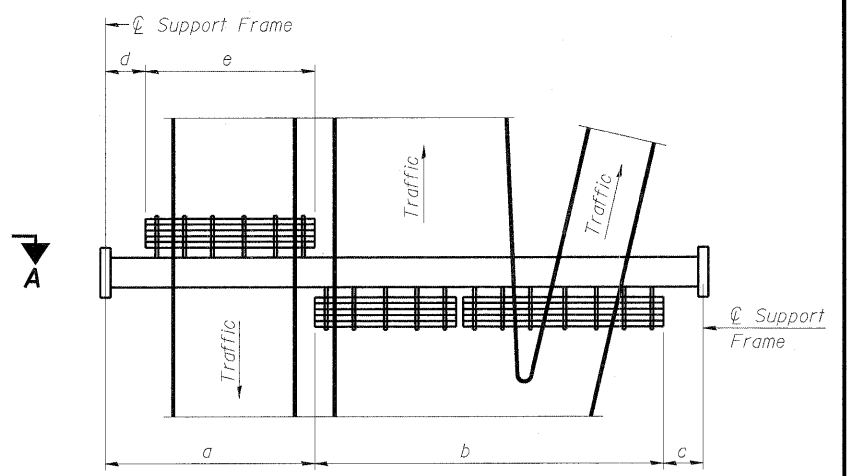


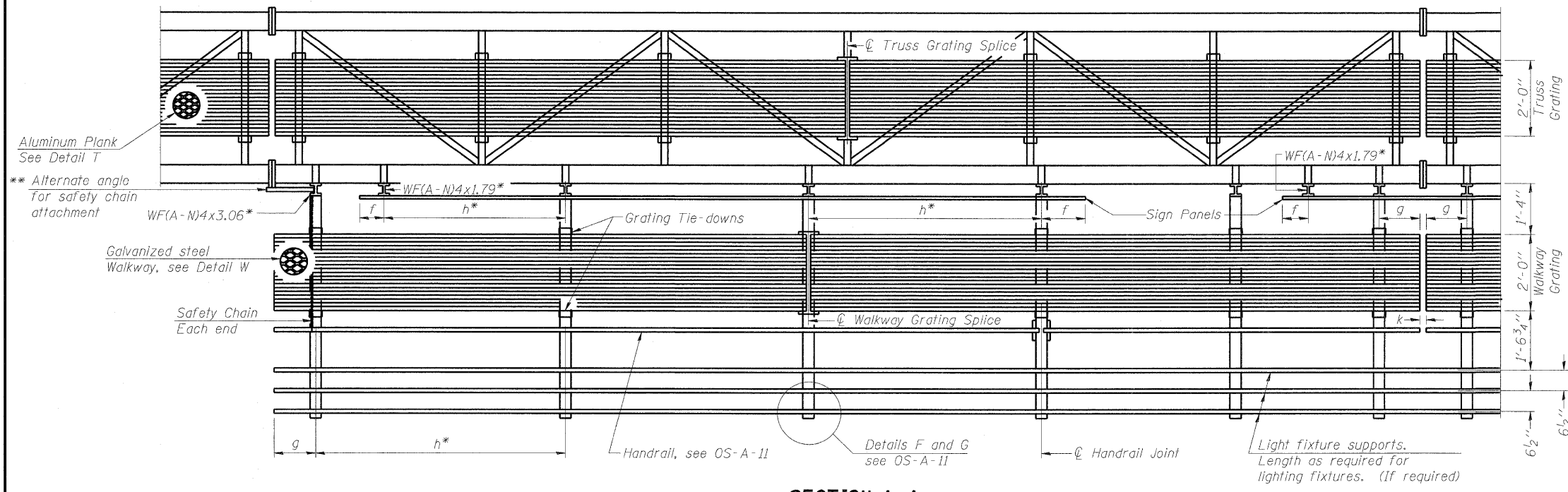
TYPICAL FRONT ELEVATION

With lights and handrail omitted for clarity. For Section B-B, see Base Sheet OS-A-10.

Truss grating to facilitate inspection shall run full length (center to center of support frames) ±12" on overhead trusses. Cost of truss grating is included in "Overhead Sign Structure".



PLAN WALKWAY AND HANDRAIL SKETCH
(Road plan beneath truss varies)



SECTION A-A

Handrail and walkway shall span a minimum of three brackets between splices and/or gap joints. Place all sign and walkway brackets as close to panel points as practical. Handrail joints, grating, and light support splices placed as needed.

Note: Details shown are considered equal alternatives to the Aluminum Walkway on Base Sheet OS-A-9, and may be substituted by Contractor at no change in contract cost.

Walkway and Truss Grating width dimensions are nominal and may vary ±½" based on available standard widths.

Notes:
 * Space walkway brackets WF(A-N)4x3.06 and sign brackets WF(A-N)4x1.79 for efficiency and within limits shown:
 $f = 12''$ maximum, $4''$ minimum (End of sign to ϕ of nearest bracket)
 $g = 12''$ maximum, $4''$ minimum (End of walkway grating to ϕ of nearest support bracket)
 $h = 6'-0''$ maximum (ϕ to ϕ sign and/or walkway support brackets, WF(A-N)4x1.79 or WF(A-N)4x3.06)
 $k = 2''$ maximum gap between adjacent walkway grating sections and handrail ends
 ** If walkway bracket at safety chain location is behind sign, add angle to bracket, see Alternate Safety Chain Attachment on Base Sheet OS-A-11.
 For Details T and W, Section B-B and Grating Splice Details see Base Sheet OS-A-10.
 For handrail details see base sheet OS-A-11.

BRACKET TABLE

WF(A-N)4x1.79 or WF(A-N)4x3.06 ASTM B308, Alloy 6061-T6		
Sign Width		Number Brackets Required
Greater Than	Less Than or Equal To	
	8'-0"	2
	14'-0"	3
	20'-0"	4
	26'-0"	5
	32'-0"	6

Structure Number	Station	a	b	c	d	e	Walkway Grating and Handrail Lengths
8S0821055R003.1	88+00.00	11.5'	53.0'	12.5'	-	-	53.0'
8S0821055L003.2	68+75.00	1.5'	60.0'	9.5'	-	-	60.0'
8S0821055L003.0	78+19.81	2.0'	45.0'	24.0'	-	-	45.0'
8S0821064L003.0	110+12.00	14.0'	66.5'	27.5'	-	-	66.5'

OS-A-9S

7-1-10

FILE NAME =	USER NAME =	DESIGNED - PMK	REVISED -
		CHECKED - MPW	REVISED -
		DRAWN - PMK	REVISED -
		CHECKED - MPW	REVISED -

STATE OF ILLINOIS
DEPARTMENT OF TRANSPORTATION

OVERHEAD SIGN STRUCTURES
ALTERNATE WALKWAY DETAILS

SHEET NO. 11 OF 17 SHEETS

F.A.I. RTE.	SECTION	COUNTY	TOTAL SHEETS	SHEET NO.
•	82-1-R(A), 82-1-R(B)	ST. CLAIR	629	407
	•64/998/70			CONTRACT NO. 76C52

ILLINOIS FED. AID PROJECT