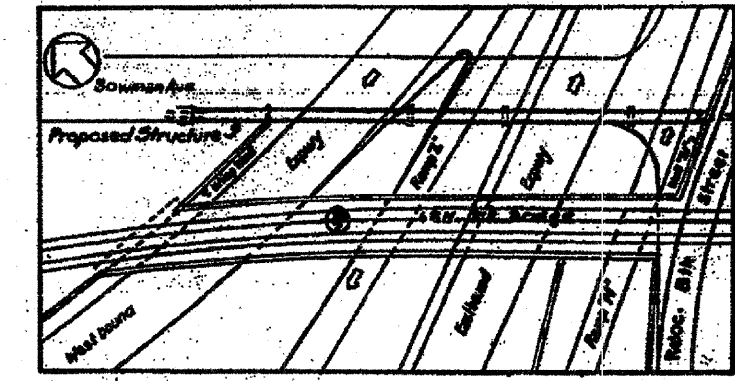
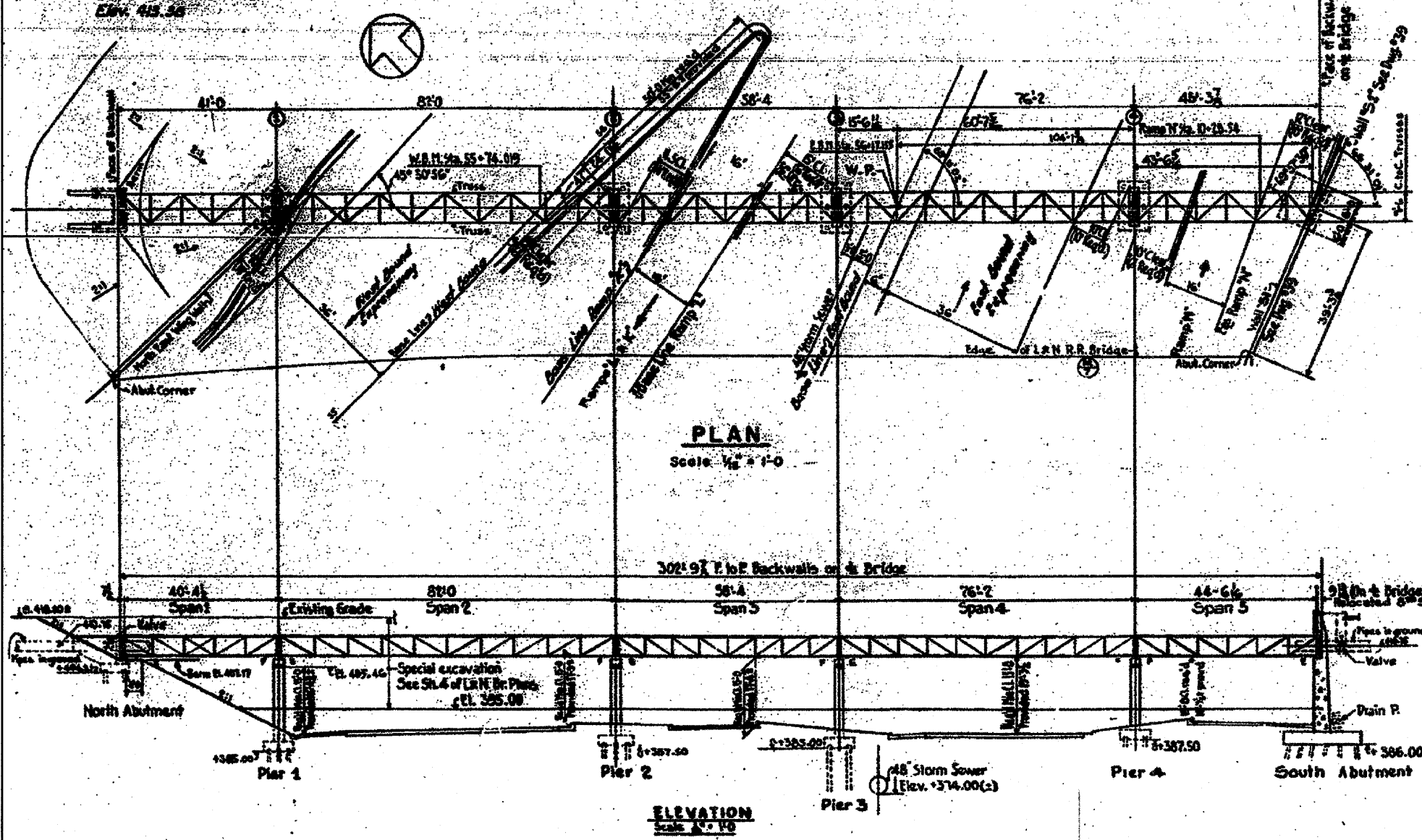


FEDERAL AID PROJECT NO.	SECTION	COUNTY	TOTAL SHEETS	SHEET NO.
E.A.S.-70	82-1(RIA), 82-1(RIB)	ST. CLAIR	629	446A
FED. ROAD DIST. NO. 7 ILLINOIS PROJECT				

S.M. No. 13
East side of Bowman Ave.
South side of 6th St.
Iron pipe on S.E. corner of
6th St & Bowman Ave.
Elev. 413.36



LOCATION PLAN

GENERAL NOTES

MATERIAL & WORKMANSHIP
State of Illinois "Standard Specifications for Road and Bridge Construction" adopted January 2, 1958.

DESIGN
Superstructure: A.I.S.C. "Specification for the Design, Fabrication and Erection of Structural Steel for Buildings" Revised June, 1949
Substructure: A.A.S.H.O. "Standard Specifications for Highway Bridges - 1957"

LOADING
For foot of bridge: Dead & Live: 11', Wind 0.2'

CONCRETE
Class "X" concrete shall be used throughout.

DESIGN LIVE STRESSES
Concrete: E = 4,000,000 psi, f_c = 20,000 psi, n = 12, Footings v = 75 psi, Substructure with Earth Pressure: f_c = 1000 psi.
Structural Steel f_s = 20,000 psi.

PILES
The contractor shall drive 6 test piles in permanent locations as directed by the Engineer, before ordering remainder of piles. One test pile shall be located under each Abutment and Pier. All piles shall be creosoted.

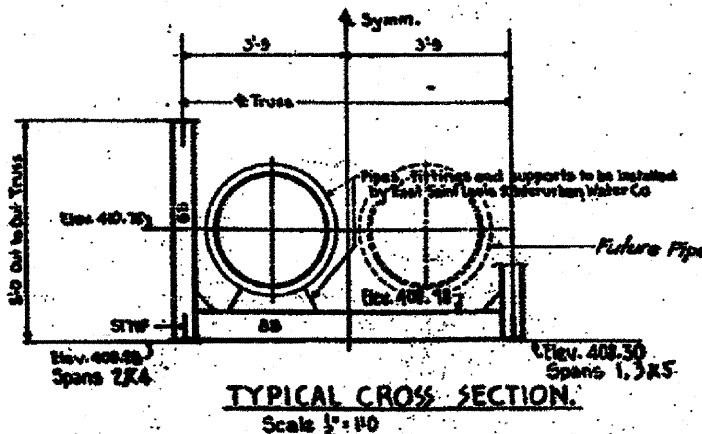
SUPERSTRUCTURE
To be all shopwelded. A.S.T.M. designation A375 steel shall be used in all members designed to carry stress. Shop to tack weld temporary bracing between top chords of trusses. This bracing to remain in place until field erection of bridge is complete.

PAINT
Except as otherwise provided structural steel shall receive one shop coat of red lead paint and two field coats of aluminum paint. See Articles 55.1 to 55.5 inclusive of the "Standard Specifications". All paint shall be furnished and applied by the Contractor involved.

WATERPROOFING
The following surfaces of the bridge shall be waterproofed: Back of backwall and backs of wingwalls at North Abutment, and back of South Abutment. Waterproofing shall be done in accordance with Article 58.21 of the Standard Specifications.

TOTAL BILL OF MATERIAL FOR PIPE BRIDGE

UNIT	DESCRIPTION	SUPER-STRUCTURE	SUB-STRUCTURE	TOTAL
CY	CLASS "X" CONCRETE FOR STRUCTURES		306	306
CY	CLASS "X" CONCRETE		127.0	127.0
LB	REINFORCEMENT BARS		14800	14800
LB	STRUCTURAL STEEL	36840		36840
EA	TEST PILES (CREOSOTED)	6		6
LF	FURNISHING CREOSOTED PILE (210'S)		1169	1169
LF	DRIVING TIMBER PILES		1269	1269
LF	6" PERF. CORR. GALV. METAL PIPE	12		12
LF	CHAIN LINK FENCE	12		12
CY	POROUS GRANULAR EMBANKMENT		39	39



TYPICAL CROSS SECTION
Scale 1/2" = 1'-0"

STATE OF ILLINOIS
DEPARTMENT OF PUBLIC WORKS & BLDGS.
DIVISION OF HIGHWAYS
EAST ST. LOUIS & INTERURBAN WATER CO.
EAST ST. LOUIS EXPRESSWAY
BRIDGE FOR 2 30" WATER PIPES
OVER E.A.S.-07
GENERAL PLAN
H. W. LOCKNER, INC.
ENGINEERS
DATE: JULY 1960 CHICAGO, ILLINOIS SHEET NO. 29

Designed by J.N.
Drawn by J.N.
Checked by H.H.