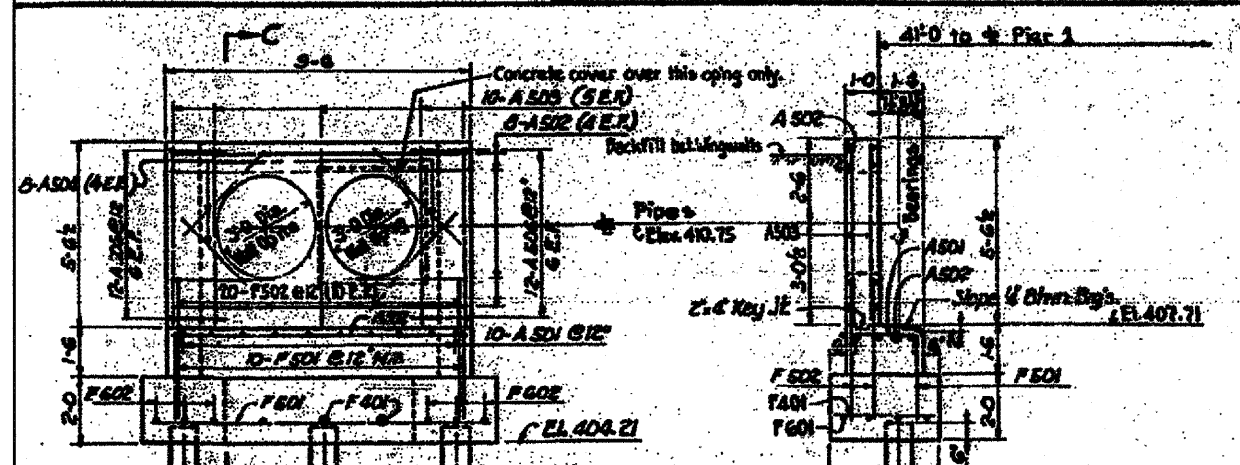
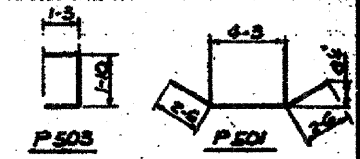


SECTION	COUNTY	TOTAL SHEETS	SHEET NO.
R.A.I.-70	ST. CLAIR	629	416
FED. ROAD DIST. NO. 7 ILLINOIS PROJECT			

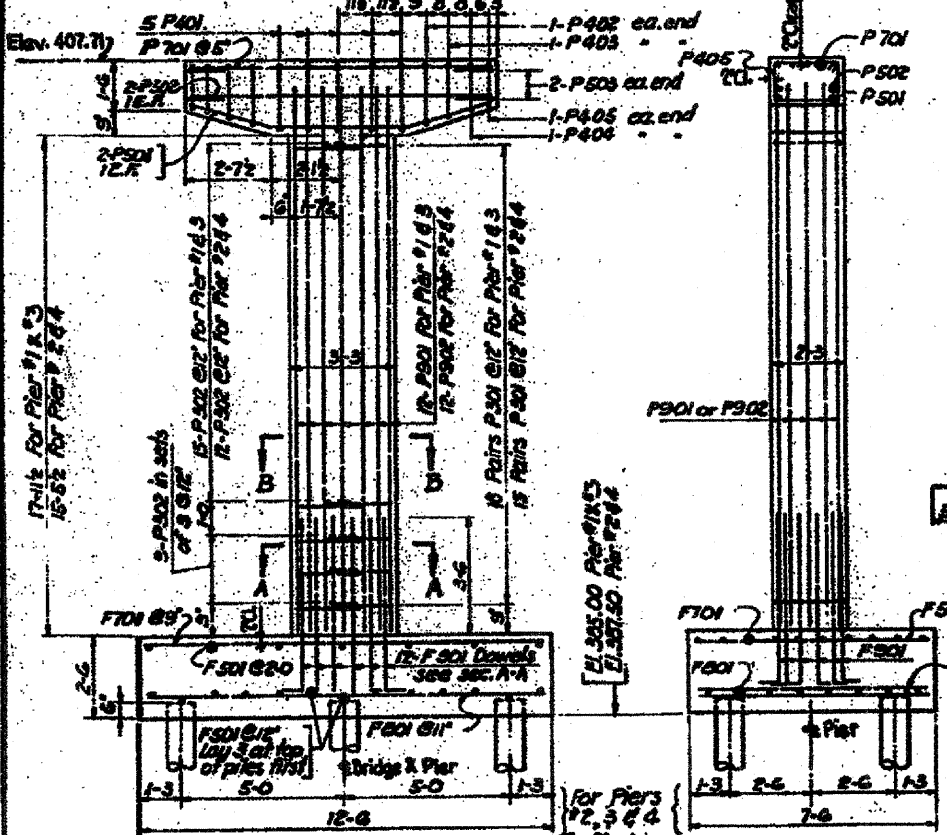
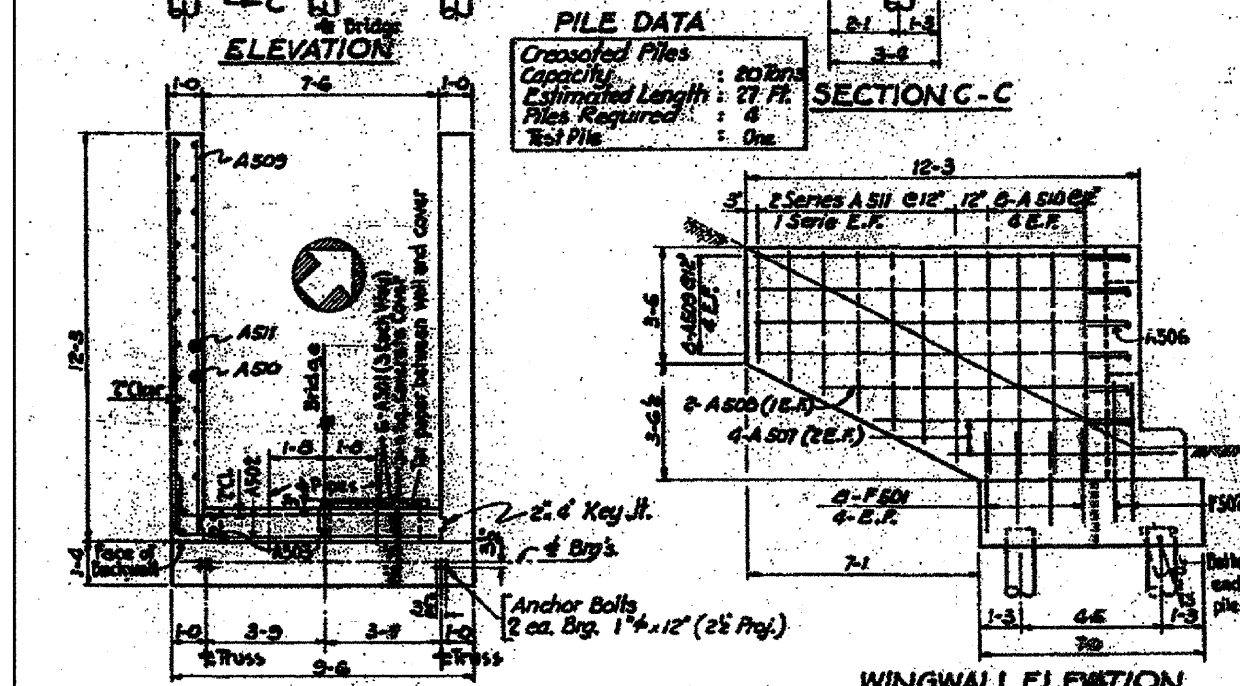
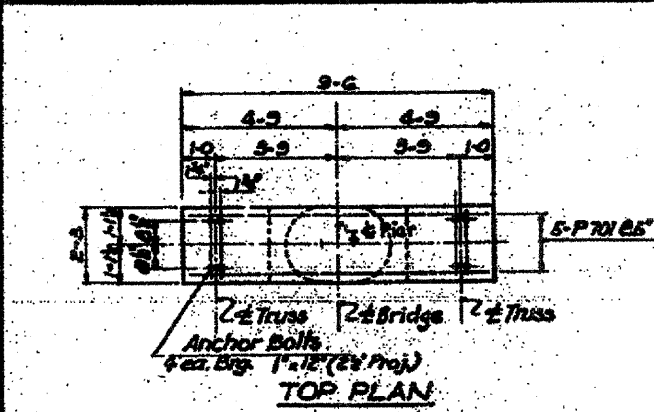
PILE DATA

Capacity : 20 Tons
 Estimated Length : 27 Ft.
 Piles Required : 22 (for 4 Piers)
 Test Pile : 4



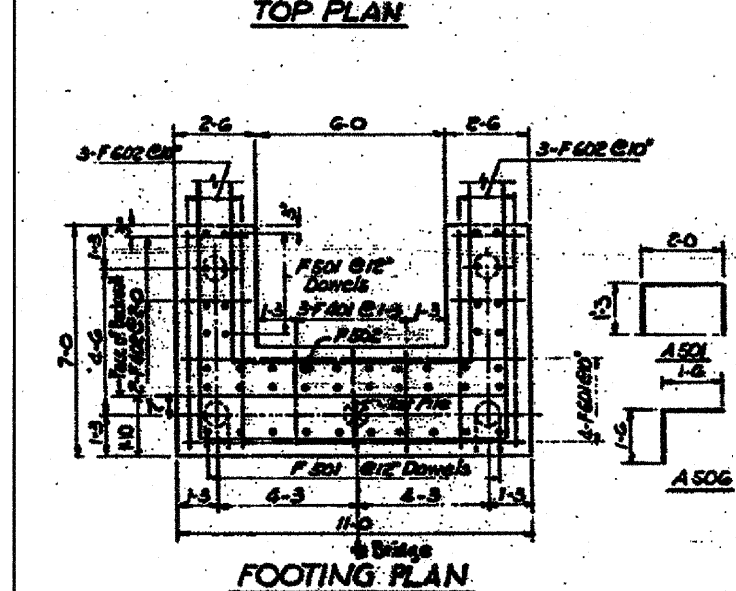
PILE DATA

Capacity : 20 Tons
 Estimated Length : 27 Ft.
 Piles Required : 22
 Test Pile : One



BAR LIST

Bar	No. Req'd	1st Pier	2nd Pier	3rd Pier	4th Pier	Size	Length	Shape
F501	20	20	20	15	7-0	#5	7-0	—
F701	10	10	10	17	12-0	#7	12-0	—
F502	14	—	—	15	6-6	#5	6-6	—
F504	8	—	—	15	5-7	#5	5-7	—
F1001	2	—	—	10	12-6	#10	12-6	—
F1002	2	—	—	10	10-2	#10	10-2	—
F1003	2	—	—	10	7-10	#10	7-10	—
F801	8	8	8	8	11-0	#8	11-0	—
F802	2	—	—	8	11-6	#8	11-6	—
F803	2	—	—	8	10-2	#8	10-2	—
F804	2	—	—	8	7-10	#8	7-10	—
F501	12	12	12	12	6-4	#5	6-4	—
F501	36	30	36	30	5-0	#5	5-0	—
P502	24	21	24	21	2-9	#5	2-9	—
P401	5	5	5	5	0-6	#5	0-6	—
P402	2	2	2	2	0-2	#5	0-2	—
P403	2	2	2	2	7-10	#5	7-10	—
P404	2	2	2	2	1-6	#5	1-6	—
P405	2	2	2	2	7-2	#5	7-2	—
P501	2	2	2	2	9-3	#5	9-3	—
P502	2	2	2	2	9-2	#5	9-2	—
P503	4	4	4	4	4-4	#5	4-4	—
P701	5	5	5	5	9-2	#7	9-2	—
P901	12	—	12	—	15-9	#12	15-9	—
P902	—	12	—	12	17-3	#12	17-3	—

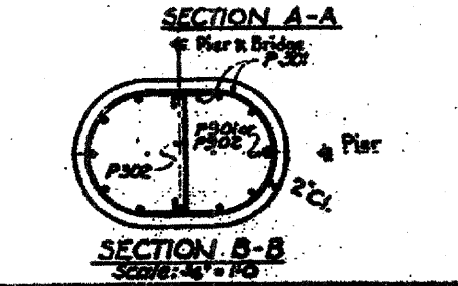
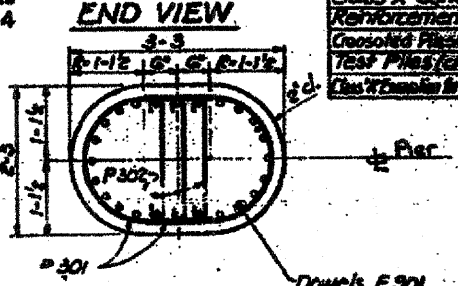
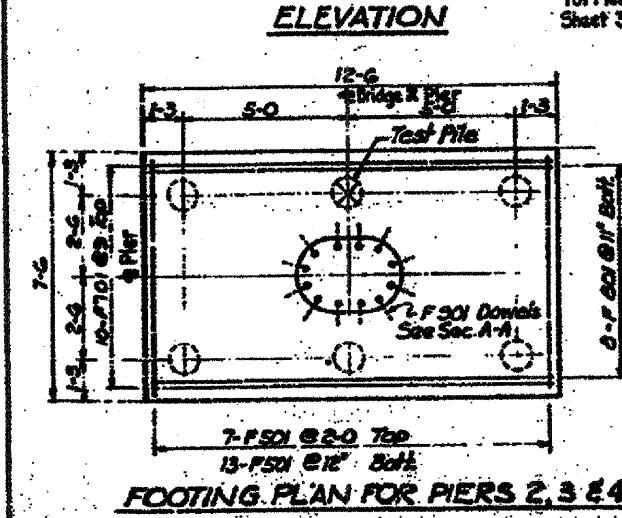


BAR LIST

Bar	No. Req'd	Size	Length	Shape
F401	5	#8	3-0	—
F402	4	#8	2-2	—
F801	26	#5	2-10	—
F802	20	#5	2-4	—
F801	6	#6	10-0	—
F802	6	#6	6-0	—
A501	6	#5	3-3	—
A501	10	#5	4-6	F1
A502	12	#5	5-2	—
A503	12	#5	5-4	—
A504	6	#5	3-6	—
A505	24	#8	5-0	—
A507	8	#8	7-6	—
A508	4	#8	10-0	—
A509	16	#8	11-11	—
A510	16	#8	7-10	—
A511	4 series	#5	from 2-2 to 1-5	—

BILL OF MATERIAL

Class X Concrete	10,000	107
Reinforcement Bars	Lbs.	1,200
Consolidated Piles (1/2" Dia)	Un. Ft.	22
Test Piles (1/2" Dia)	Un.	4
Consolidated Structures	Cu Yds	276



BILL OF MATERIAL

Class X Concrete	Pier No. 1	Pier No. 2	Pier No. 3	Pier No. 4	Total	
Class X Concrete	12,775	11,800	14,300	14,125	54,900	
Reinforcement Bars	Lbs.	1,940	1,910	2,120	1,910	7,880
Consolidated Piles (1/2" Dia)	Un. Ft.	109	105	115	115	544
Test Piles (1/2" Dia)	Un.	1	1	1	1	4
Consolidated Structures	Cu Yds	60	53	72	53	238

Designed by: J.K.
 Drawn by: A.B.
 Checked by: M.H.

For details of footing for Pier #1 see Sheet 27.

STATE OF ILLINOIS
 DEPARTMENT OF PUBLIC WORKS & BLDGS.
 DIVISION OF HIGHWAYS
 EAST ST. LOUIS & INTERURBAN WATER CO.
 EAST ST. LOUIS EXPRESSWAY
 BRIDGE FOR 2 30" WATER PIPES
 OVER I-55-70
 NORTH ABUTMENT AND PIERS No. 1, 2, 3 & 4
 H. W. LOCHNER, INC.
 ENGINEERS
 DATE: JULY 1966 CHICAGO ILLINOIS SHEET NO. 26