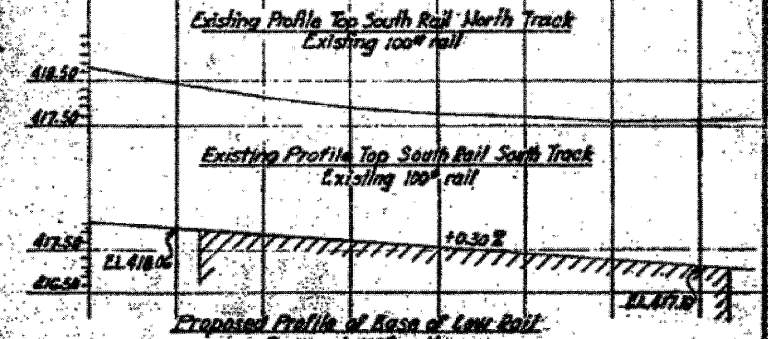
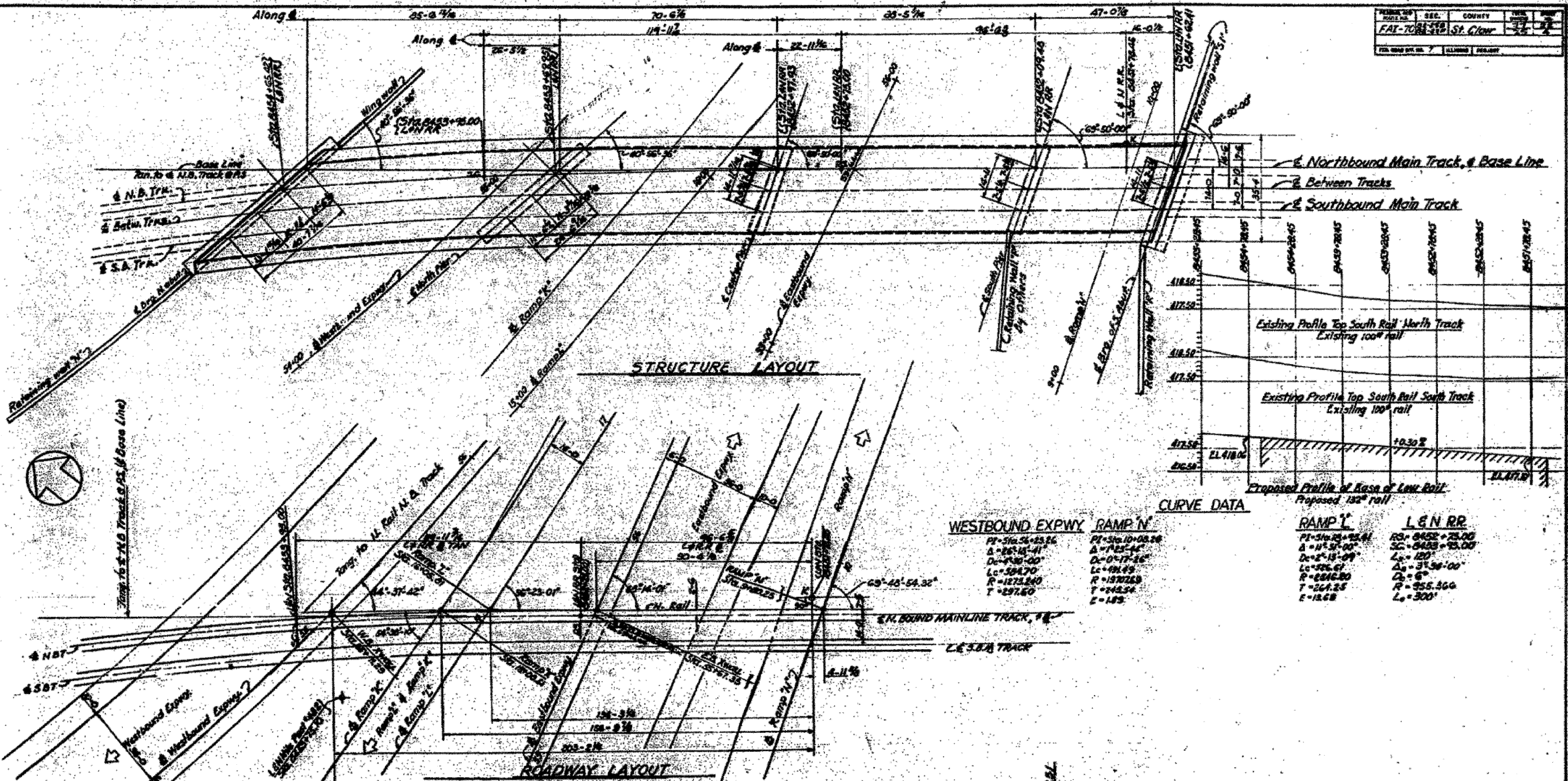
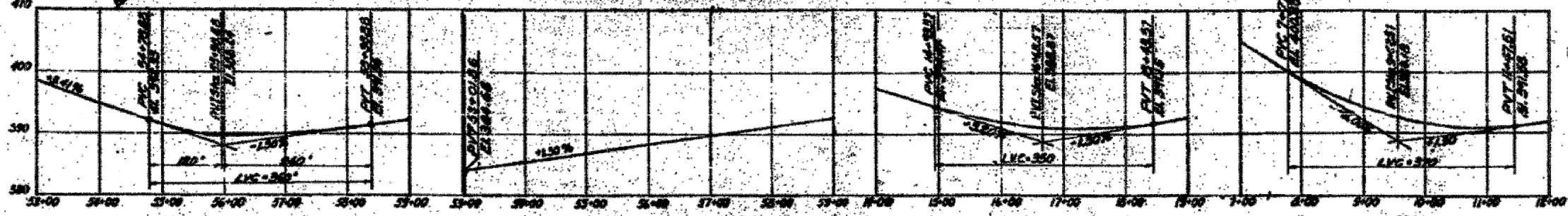


PROJECT NO.	SECTION	COUNTY	TOTAL SHEETS	SHEET NO.
FAT-76C52-SHT-LNRRD-1dgc-02.dgn	82-1-RIA, 82-1-R(B)	ST. CLAIR	629	449
DATE	CONTRACT NO.			
JULY 1960	64/99B/70		76C52	
FED. ROAD DIST. NO.		ILLINOIS FED. AID PROJECT		



CURVE DATA

WESTBOUND EXPWY RAMP N	RAMP 1	L & N RR
PI=516.56+23.86	PI=516.10+23.28	PI=516.23+23.61
Δ=26°15'41"	Δ=1°25'44"	Δ=11°31'00"
Dc=940.00'	Dc=0°17'26"	Dc=2°15'09"
Lc=594.70'	Lc=481.49'	Lc=526.61'
R=1273.260'	R=1370.269'	R=886.80'
T=297.60'	T=246.54'	T=267.25'
E=18.68'	E=1.82'	E=18.68'



Designed by W.L.F.
Drawn by A.B.
Checked by P.K.

STATE OF ILLINOIS
DEPARTMENT OF PUBLIC WORKS & BLDGS.
DIVISION OF HIGHWAYS
CITY OF EAST ST. LOUIS
EAST ST. LOUIS EXPRESSWAY
L & N R.R. OVER WEST BOUND EXPWAY.
RAMP 1, EAST BOUND EXPWAY AND RAMP 2
GENERAL GEOMETRIC LAYOUT
N.W. LOCHNER, INC.
ENGINEERS
CHICAGO, ILLINOIS
DATE: JULY 1960
SHEET NO. 2

FILE NAME	USER NAME	DESIGNED	REVISED	STATE OF ILLINOIS DEPARTMENT OF TRANSPORTATION	EXISTING BRIDGE PLAN - L&N RR BRIDGE 02	SCALE: NONE	SHEET NO. 3 OF 26 SHEETS	STA. TO STA.	F.A.I. RTE.	SECTION	COUNTY	TOTAL SHEETS	SHEET NO.
DBTRI-76C52-SHT-LNRRD-1dgc-02.dgn	searsh	DRAWN - GF	REVISED -						82-1-RIA, 82-1-R(B)	ST. CLAIR	629	449	
PLOT SCALE = 2,000' / 1"	CHECKED - DD	REVISED -	REVISED -						64/99B/70	CONTRACT NO. 76C52			
PLOT DATE = 1/23/2012	DATE - 07/21/10	REVISED -	REVISED -						FED. ROAD DIST. NO.	ILLINOIS FED. AID PROJECT			