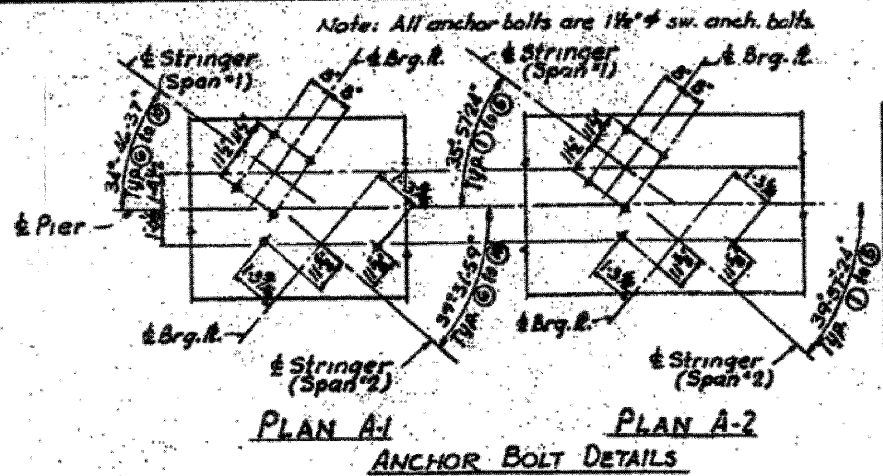
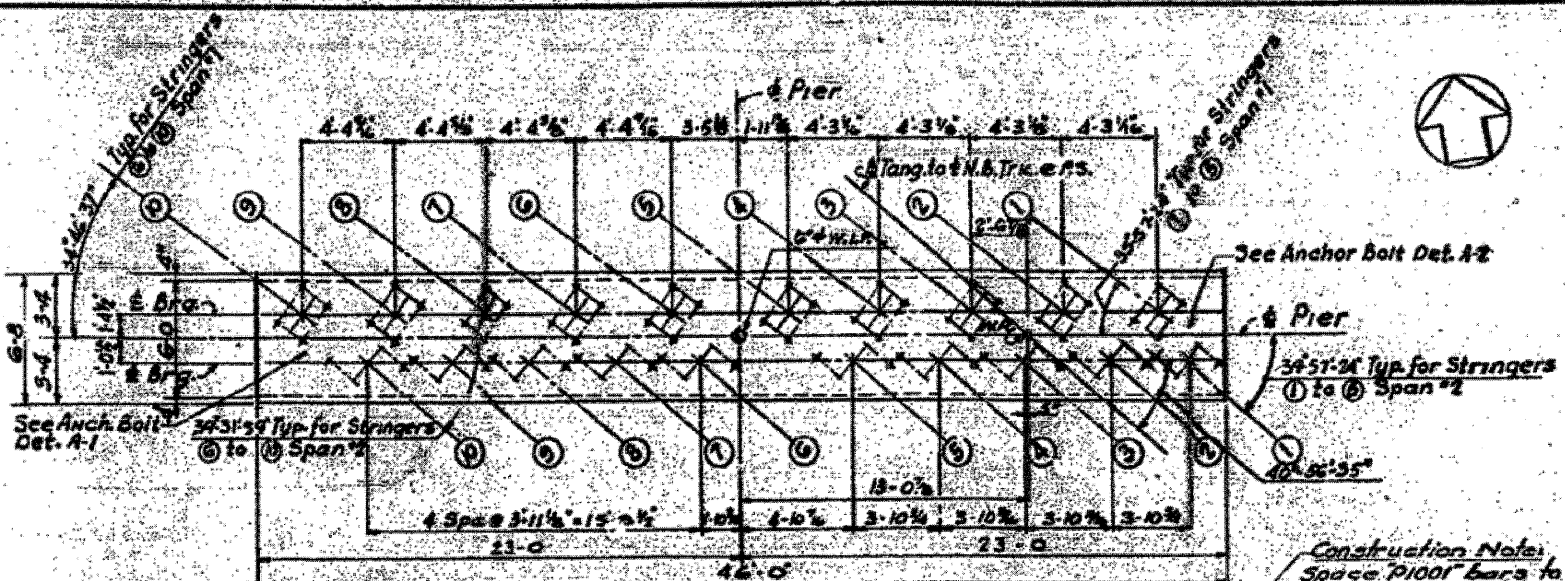
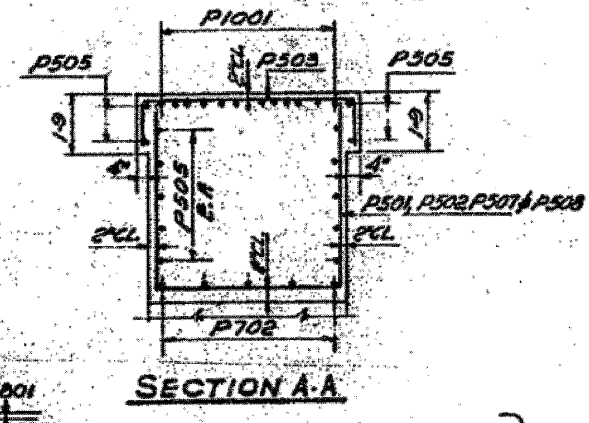
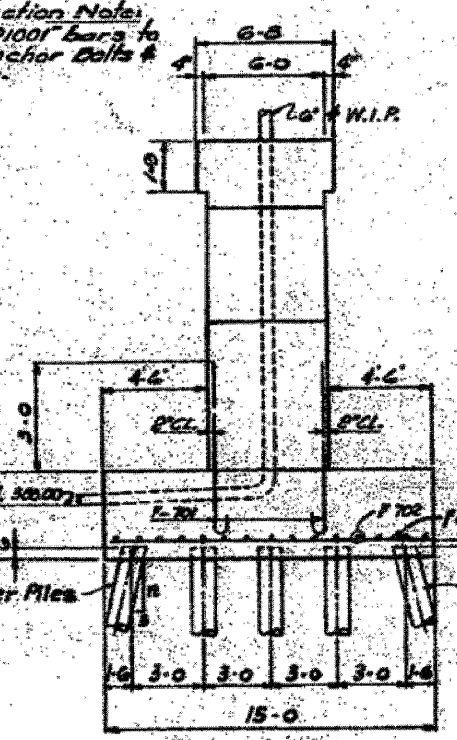
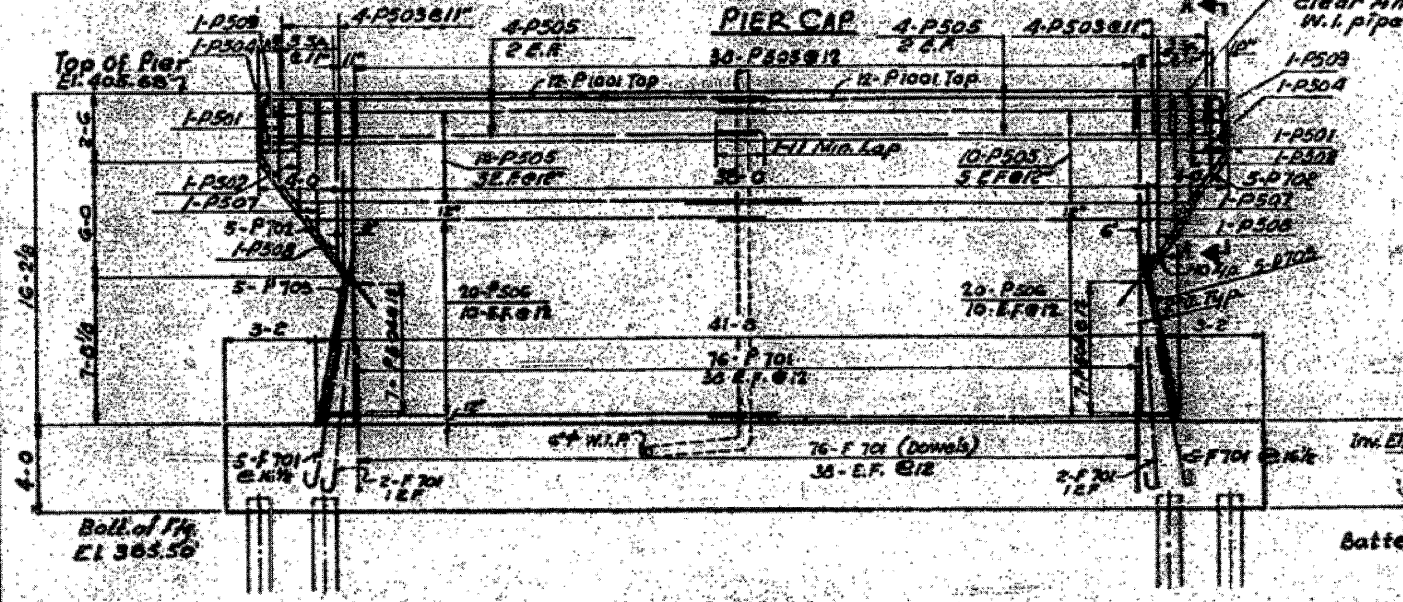


PROJECT NO.	82-1-RIA	COUNTY	ST. CLAIR
DATE	7/23/10	SHEET NO.	9

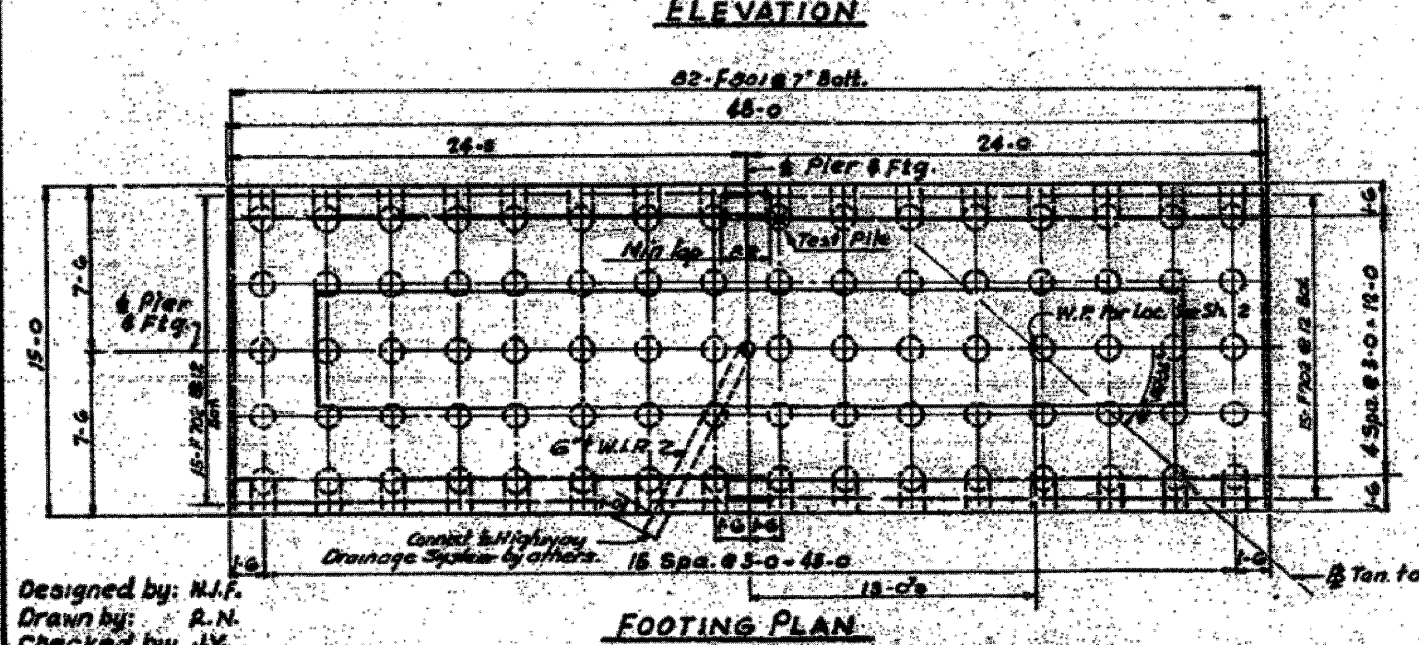


BAR SCHEDULE				
Mark	No. Req'd	Size	Length	Shape
F 701	90	#7	7'-4"	U
F 702	30	#7	25'-1"	U
F 201	82	#5	14'-6"	U
P 501	2	#8	12'-2"	U
P 502	2	#8	15'-0"	U
P 503	46	#8	5'-2"	U
P 504	16	#5	8'-0"	U
P 505	28	#5	23'-10"	U
P 506	40	#2	21'-5"	U
P 507	2	#8	17'-8"	U
P 508	2	#5	20'-5"	U
P 509	2	#5	8'-6"	U
P 701	76	#7	15'-0"	U
P 702	10	#7	11'-9"	U
P 703	10	#7	10'-3"	U
P 1001	24	#10	25'-1"	U



BILL OF MATERIALS		
Class 'C' Concrete	CY	255
Reinforcement Bars	lbs	75,660
Furnishing Concrete Piles	LF	3,233
Driving Concrete Piles	LF	3,233
Test Pile (Concrete)	ea.	1

PILE DATA	
No. Required	79
Estimated Length	41 ft
Capacity	6000k
Type: Concrete Piles	
Test pile	1



Designed by: M.J.F.  
 Drawn by: R.N.  
 Checked by: J.V.

NOTES  
 For general notes see sh. #1  
 For Location see sh. #2  
 For Drainage see sh. #23  
 Care shall be taken in placing reinforcement bars so as to clear anchor bolts.

STATE OF ILLINOIS  
 DEPARTMENT OF PUBLIC WORKS & BLDGS.  
 DIVISION OF HIGHWAYS  
 CITY OF EAST ST. LOUIS  
**EAST ST. LOUIS EXPRESSWAY**  
 L & N R.R. OVER WESTBOUND EXPWAY,  
 RAMP "L", EASTBOUND EXPWAY AND RAMP "N"  
 NORTH PIER  
 H. W. LOCHNER, INC.  
 ENGINEERS  
 CHICAGO, ILLINOIS  
 DATE JULY 1969  
 SHEET NO. 9