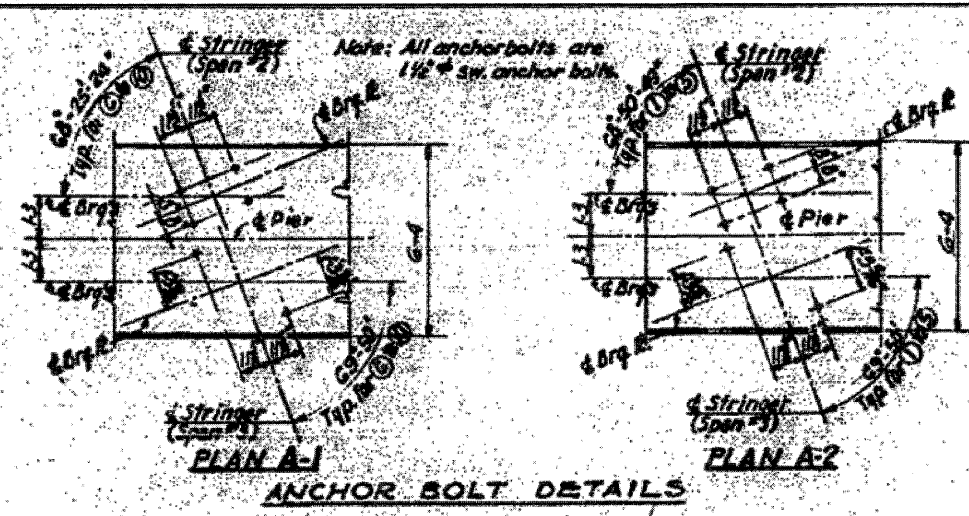
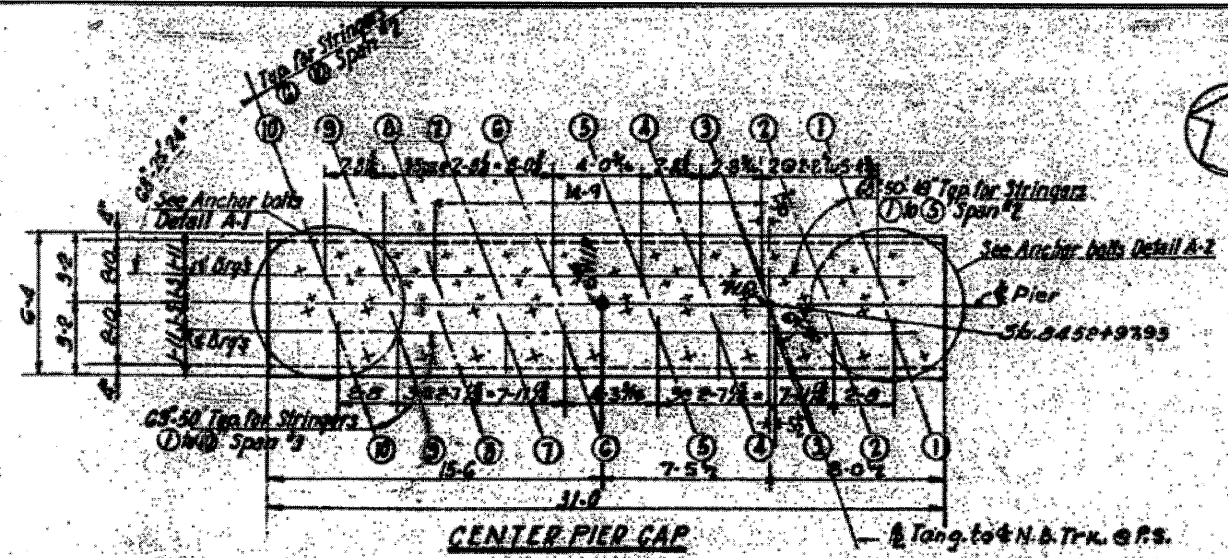
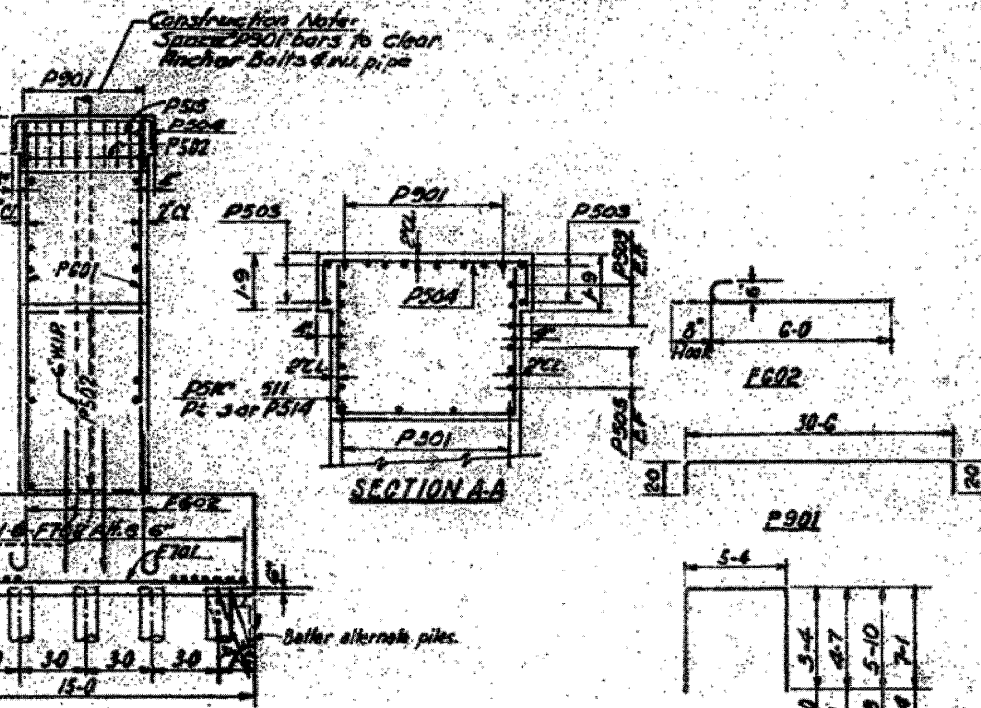
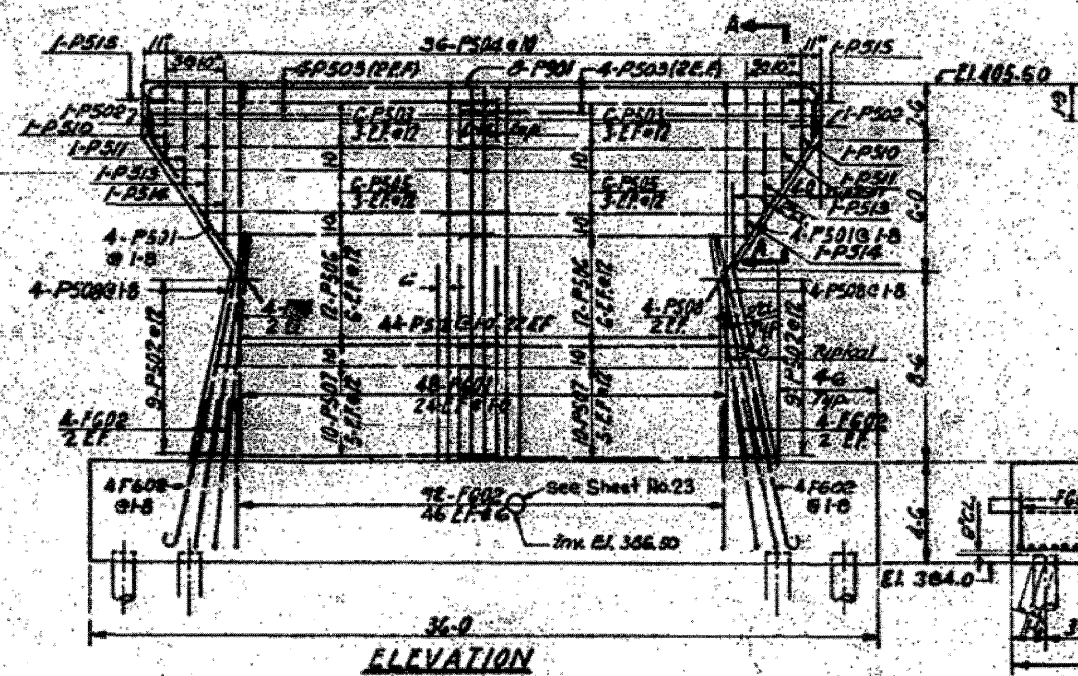


PROJECT NO.	SHEET NO.	COUNTY	TOTAL SHEETS
FA-701-11	10	St. Clair	26
FED. ROAD DIST. NO. 7 ILLINOIS FED. AID PROJECT			



**BAR LIST**

Mark	No. Req'd	Size	Length	Shape
F601	32	5	19-0	—
F602	108	6	6-9	—
F701	71	7	14-6	—
F702	28	7	10-3	—
P501	6	5	10-0	—
P502	20	5	8-0	—
P503	20	5	16-3	—
P504	36	5	8-10	—
P505	18	5	14-9	—
P506	18	5	15-1	—
P507	28	5	14-1	—
P508	16	5	10-3	—
P510	2	5	11-0	—
P511	2	5	14-6	—
P512	44	5	8-6	—
P513	8	5	17-0	—
P514	2	5	19-6	—
P515	2	5	8-9	—
P601	48	6	16-0	—
P901	8	9	34-6	—

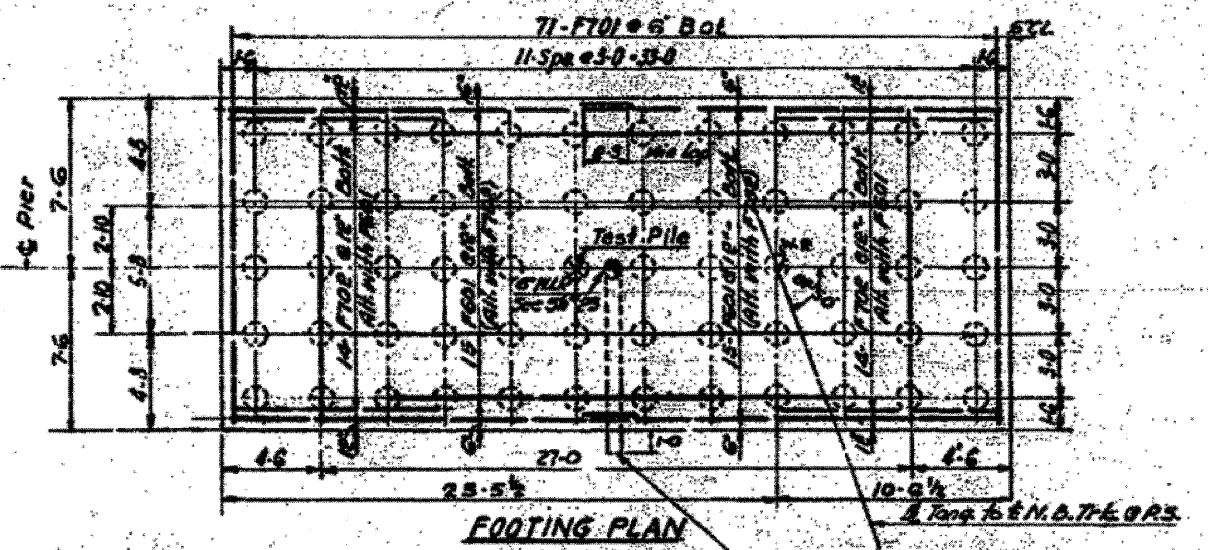


**BILL OF MATERIALS**

Class A Concrete	CY	106.3
Reinforcement bars	Lb	8,510
Forming concrete piles	LF	8,360
Driving concrete piles	LF	8,360
Test Pile (Concrete)	Eq	1

**Notes**

See Sh#1 for Gen. Notes  
See Sh#2 for Location  
See Sh#23 for Drainage Details  
Care shall be taken in placing reinforcement bars so as to clear anchor bolts.  
For pile details see Sheet No. 24



**PILE DATA**

Type: Concrete Piles	
Estimated Length	40
Capacity	40 Tons
No. Required	59
Test Pile	1

STATE OF ILLINOIS  
DEPARTMENT OF PUBLIC WORKS & BLDGS.  
DIVISION OF HIGHWAYS  
CITY OF EAST ST. LOUIS  
**EAST ST. LOUIS EXPRESSWAY**  
L. & N. R.R. OVER WEST BOUND EXPWAY, RAMP "L" EAST BOUND EXPWAY AND RAMP "T"  
CENTER PIER  
N.W. LOCHNER, INC.  
ENGINEERS  
DATE JULY 1960 CHICAGO, ILLINOIS SHEET NO. 6

Designed by E.M.  
Drawn by W.C.  
Checked by J.W.

FILE NAME: DBTRI-76C52-SHT-LNRRB-1.dgn	USER NAME: sear-sb	DESIGNED: GF	REVISED: -	STATE OF ILLINOIS DEPARTMENT OF TRANSPORTATION	EXISTING BRIDGE PLAN - L&N RR BRIDGE 09	SCALE: NONE SHEET NO. 10 OF 26 SHEETS STA. TO STA.	F.A.I. RTE.	SECTION	COUNTY	TOTAL SHEETS	SHEET NO.
		DRAWN: GF	REVISED: -				64/99B/70	82-1-(R)A, 82-1-(R)B	ST. CLAIR	629	456
		CHECKED: DD	REVISED: -				CONTRACT NO. 76C52				
		DATE: 07/21/10	REVISED: -				ILLINOIS FED. AID PROJECT				