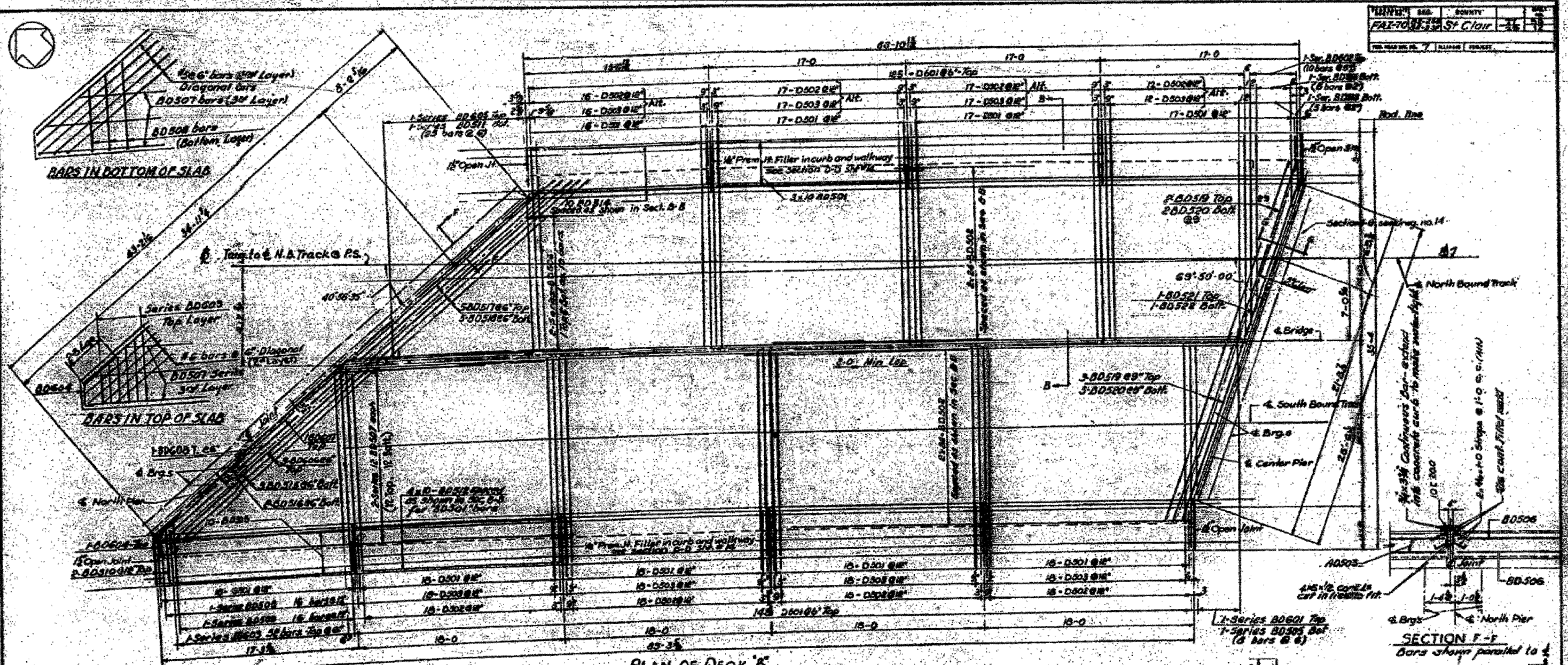
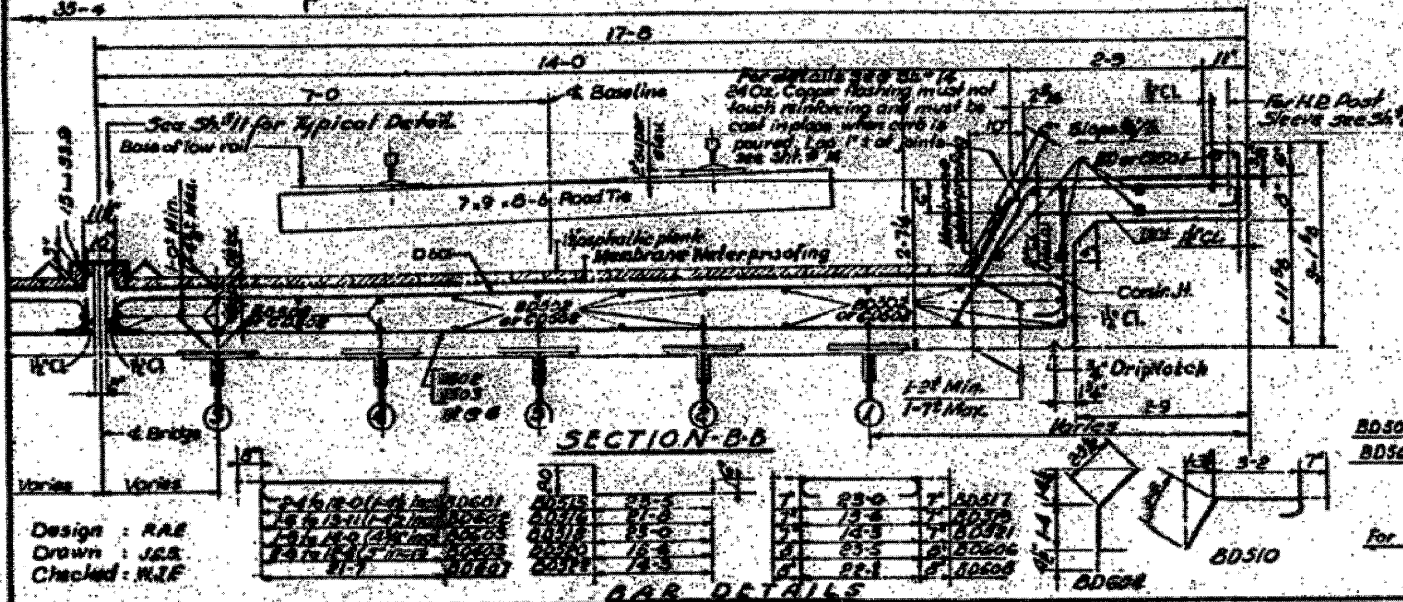


PROJECT	NO.	COUNTY	SHEET
FAI-7065-13	14	ST. CLAIR	46
FED. ROAD DIST. NO. 7		ILLINOIS FED. AID PROJECT	



PLAN OF DECK B



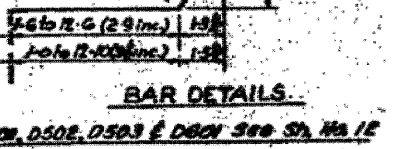
SECTION-B-B

BAR SCHEDULE (Cont'd)

Mark	No. Bars	Size	Length	Shape
D601	273	#6	15.0	U
D602	134	#5	19.8	U
D603	154	#5	17.3	U
D604	30	#5	16.8	U
D605	4	#5	36.6	U
D606	1	#5	17.3	U
D607	1	#5	24.2	U
D608	1	#5	24.0	U

BAR SCHEDULE

Mark	No. Bars	Size	Length	Shape
D501	157	#5	5.7	U
D502	134	#5	19.8	U
D503	154	#5	17.3	U
D504	30	#5	16.8	U
D505	4	#5	36.6	U
D506	1	#5	17.3	U
D507	1	#5	24.2	U
D508	1	#5	24.0	U
D509	1	#5	17.3	U
D510	2	#5	6.5	U
D511	1	#5	17.3	U
D512	10	#5	17.5	U
D513	10	#5	17.0	U
D514	10	#5	18.5	U
D515	3	#5	25.1	U
D516	2	#5	24.2	U
D517	3	#5	24.2	U
D518	3	#5	25.6	U
D519	3	#5	16.8	U
D520	5	#5	18.0	U
D521	1	#5	15.5	U
D522	1	#5	18.9	U



BAR DETAILS

BAR DETAILS

D509	111 to 112 (29 in.)	D508	24 to 180 (14 in.)
D508	51 to 140 (9 in.)	D511	29 to 189 (8 in.)

NOTES:
 For Hoodrail Post Spacing see SH#22.
 For Bill of Material see SH#12.
 For Deck Drainage at EL Top of Deck see SH#23.
 For General Notes see SH#1.

STATE OF ILLINOIS
 DEPARTMENT OF PUBLIC WORKS & BLDG.
 DIVISION OF HIGHWAYS
 CITY OF EAST ST. LOUIS
EAST ST. LOUIS EXPRESSWAY
 L & N. R. OVER WEST BOUND EXPWAY,
 RAMP "L", EAST BOUND EXPWAY AND RAMP "M"
 DECK "B" AND DETAILS

R.W. LOCHNER, INC.
 ENGINEERS
 CHICAGO, ILLINOIS
 DATE: JULY 1968
 SHEET NO. 13