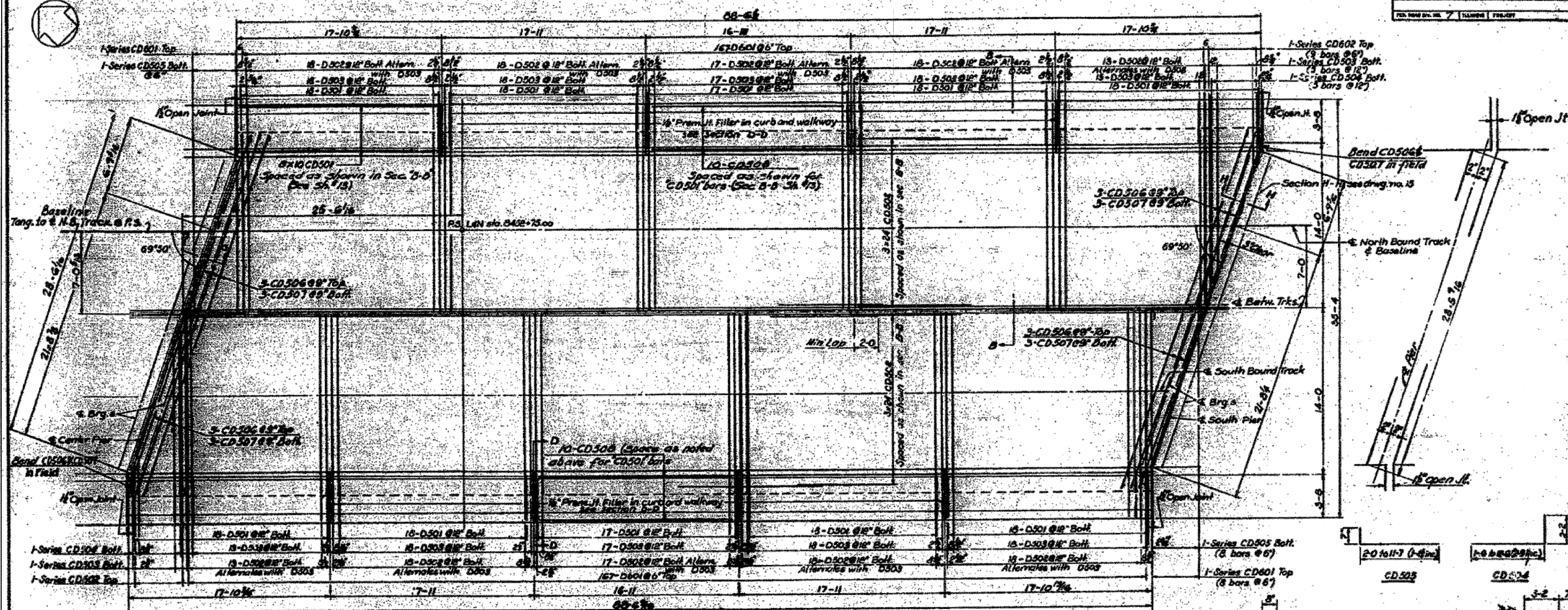


FED. ROAD DIST. NO.	SECTION	COUNTY	TOTAL SHEETS	SHEET NO.
64-998-70	82-1(R), 82-1(RB)	ST. CLAIR	629	461
CONTRACT NO. 76C52		ILLINOIS FED. AID PROJECT		



PLAN OF DECK 'C'

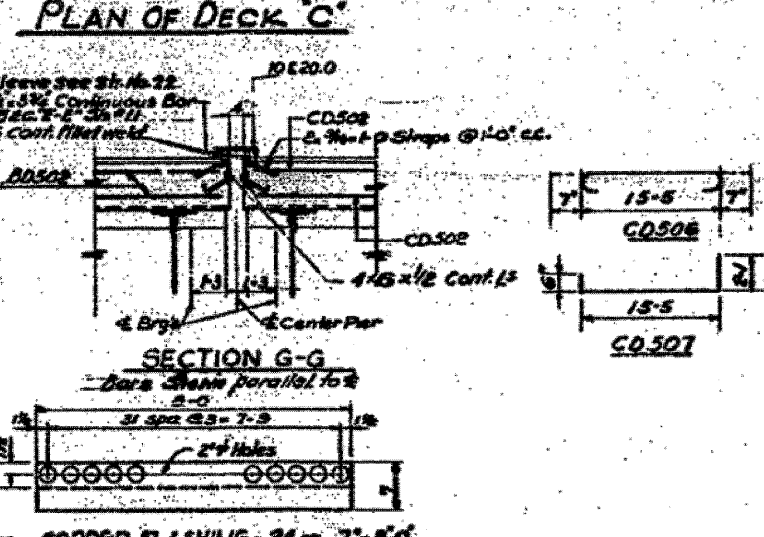
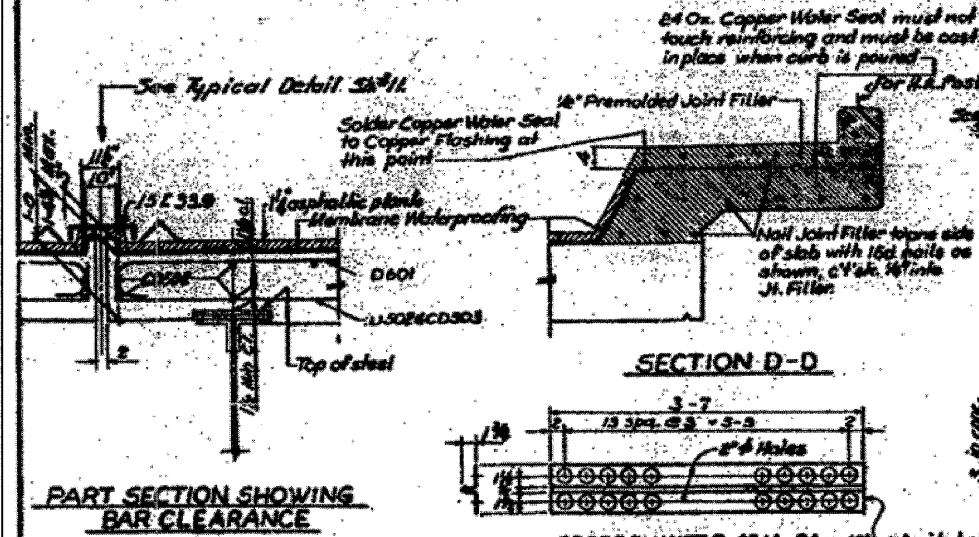
Mark	No. Req.	Size	Length	Shape
D501	178	#6	5-2	□
D502	168	#6	10-8	□
D503	168	#6	17-9	□
CD501	80	#6	17-7	□
CD502	148	#6	31-0	□
CD503	55 to 58	#6	17-7	□
CD504	2 Section Bars	#6	17-7	□
CD505	55 to 58	#6	17-7	□
CD506	18	#6	16-7	□
CD507	12	#6	18-0	□
CD508	20	#5	16-7	□
CD601	8 Series 8 bars Ea.	#6	28 1/2 / 29	□
CD602	8 Series 9 bars Ea.	#6	35 1/2 / 35	□
D601	334	#6	15-0	□

NOTES
 For handrail post spacing see Sht. # 22
 For Bill of Materials see Sht. # 12
 For Deck Drainage and DL Top Deck see Sht. # 23
 For Section B-B see Sht. # 13
 For General Notes see Sht. # 3

STATE OF ILLINOIS
 DEPARTMENT OF PUBLIC WORKS & BLDGS
 DIVISION OF HIGHWAYS
 &
 CITY OF EAST ST. LOUIS
EAST ST. LOUIS EXPRESSWAY
 L. & N. R.R. OVER WEST BOUND EXPWAY,
 RAMP 1, EAST BOUND EXPWAY AND RAMP 7

DECK 'C' AND DETAILS

H. W. LOCHNER, INC.
 ENGINEERS
 DATE: JULY 1960 CHICAGO, ILLINOIS SHEET NO. 14



Designed by: PAE
 Drawn by: JCS
 Checked by: W.J.F.

FILE NAME = DBTRI-76C52-SHT-LNRRB-rdgs-14.dgn	USER NAME = searsh	DESIGNED -	REVISED -	STATE OF ILLINOIS DEPARTMENT OF TRANSPORTATION	EXISTING BRIDGE PLAN - L&N RR BRIDGE 14	F.A.I. RTE. =	SECTION =	COUNTY =	TOTAL SHEETS =	SHEET NO. =
PLOT SCALE = 2.0000 1/16"	PLOT DATE = 1/23/2012	DRAWN - GF	REVISED -	SCALE: NONE	SHEET NO. 15 OF 26 SHEETS	82-1(R), 82-1(RB)	ST. CLAIR	629	461	CONTRACT NO. 76C52
CHECKED - DD	DATE - 07/21/10	REVISED -	REVISED -	STA. TO STA.	ILLINOIS FED. AID PROJECT					