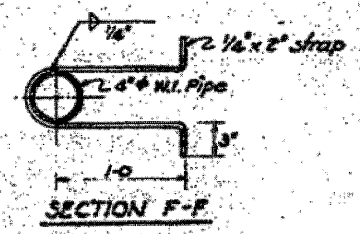
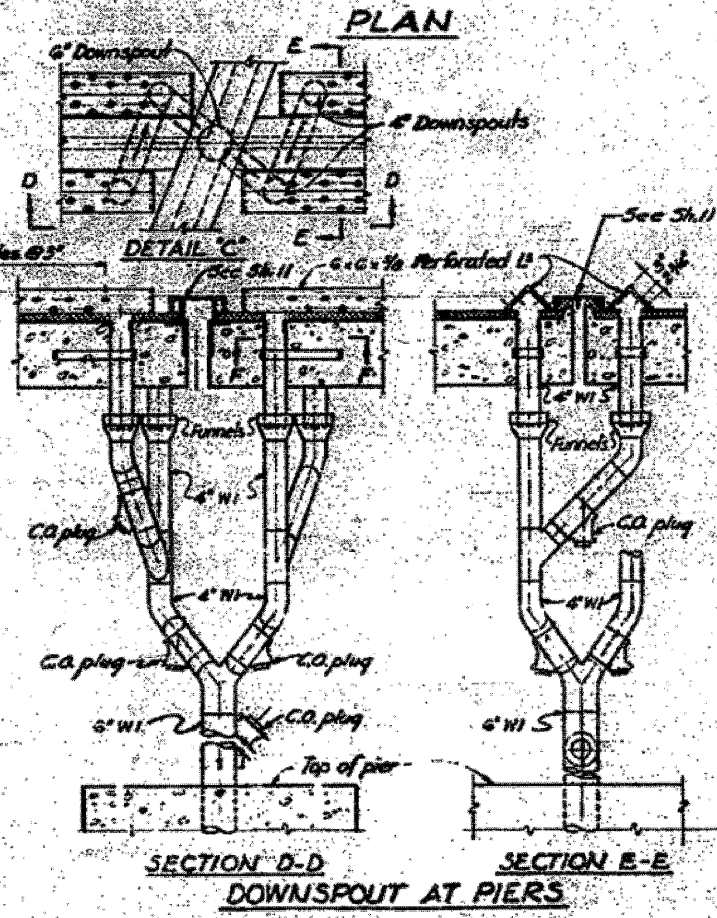


The perforated angles should be furnished in 10-0 increments on curved slabs.



NOTE:
All wrought iron pipe shall be standard weight, fittings shall be either screw joint or welded joint see special provisions.

Designed by: R.B.
Drawn by: R.S.
Checked by: P.D.

STATE OF ILLINOIS
DEPARTMENT OF PUBLIC WORKS & BLDGS.
DIVISION OF HIGHWAYS
CITY OF EAST ST. LOUIS
EAST ST. LOUIS EXPRESSWAY
L & N R.R. OVER WEST BOUND EXPWAY,
RAMP "L", EAST BOUND EXPWAY AND RAMP "M"
DECK DRAINAGE DETAILS
H. W. LOCHNER, INC.
ENGINEERS
CHICAGO, ILLINOIS
DATE JULY 1966 SHEET NO. 26

FILE NAME = D8TR1-76C52-SHT-LNRRB-1.dgn	USER NAME = sear:sb	DESIGNED - GF	REVISED -	STATE OF ILLINOIS DEPARTMENT OF TRANSPORTATION	EXISTING BRIDGE PLAN - L&N RR BRIDGE 25			F.A.I. RTE. = 64-998-70	SECTION = 82-1-R(A), 82-1-R(B)	COUNTY = ST. CLAIR	TOTAL SHEETS = 629	SHEET NO. = 472
	PLOT SCALE = 2.0000" / 1"	CHECKED - DD	REVISED -		SCALE: NONE	SHEET NO. 26 OF 26 SHEETS	STA. TO STA.	CONTRACT NO. 76C52				
	PLOT DATE = 1/23/2012	DATE = 07/21/10	REVISED -		FED. ROAD DIST. NO. ILLINOIS FED. AID PROJECT							