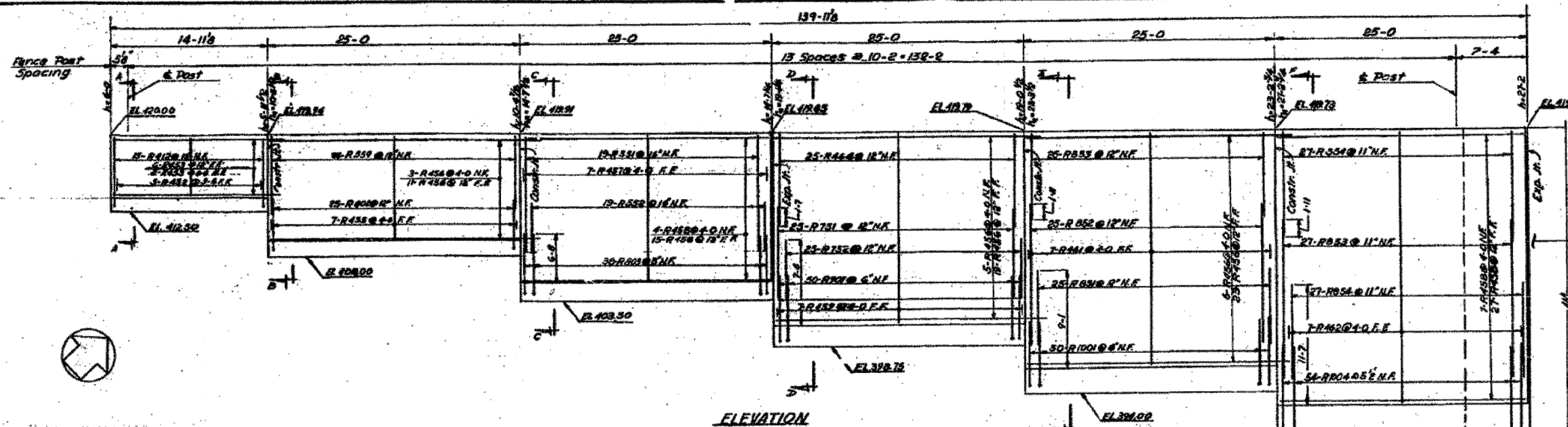
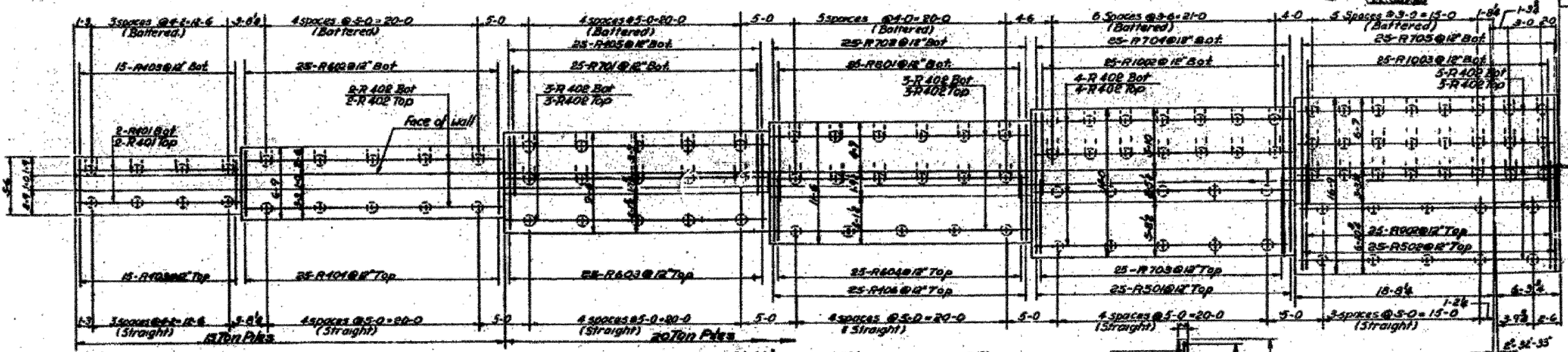


DESIGNED BY	DATE	CHECKED BY	DATE
F.A.I. RTE. 64-998-70	1/23/2012	St. Clair	7/1/10



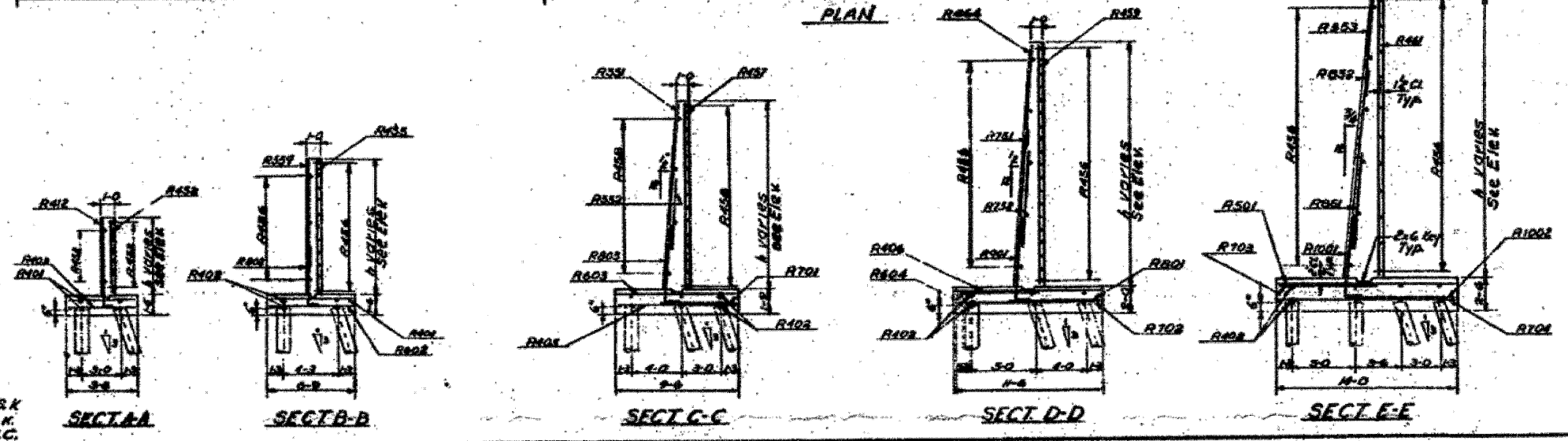
For continuation see Sh. N° 38

ELEVATION



PLAN

- NOTES**
- For General Notes see Sh. No. 1.
 - For Construction Jt, Expansion Jt, & Drainage Detail see Sh. No. 35.
 - For Fence Post Anchor Bolt Detail see Sh. No. 33.
 - For Section F-F see Sh. No. 38.



Designed by: S.K.
Drawn by: L.K.
Checked by: A.C.

STATE OF ILLINOIS
DEPARTMENT OF PUBLIC WORKS & BLDGS.
DIVISION OF HIGHWAYS
&
CITY OF EAST ST. LOUIS
EAST ST. LOUIS EXPRESSWAY

RETAINING WALL "R"
DETAILS

H. W. LOCHNER, INC.
ENGINEERS
CHICAGO, ILLINOIS

DATE: JULY 1960 SHEET NO. 37

FILE NAME = DBTRI-76C52-SHT-Wall-R_01.dgn	USER NAME = searsb	DESIGNED - GF	REVISOR -	STATE OF ILLINOIS DEPARTMENT OF TRANSPORTATION	EXISTING BRIDGE PLAN - WALL-R 01	F.A.I. RTE. 64-998-70	SECTION 82-1-(R)A, 82-1-(R)B	COUNTY ST. CLAIR	TOTAL SHEETS 629	SHEET NO. 479
PLOT SCALE = 2.0000 "/in.	PLOT DATE = 1/23/2012	CHECKED - DD	REVISOR -	SCALE: NONE	SHEET NO. 2 OF 3 SHEETS	DATE: 7/1/10	CONTRACT NO. 76C52	ILLINOIS FED. AID PROJECT		