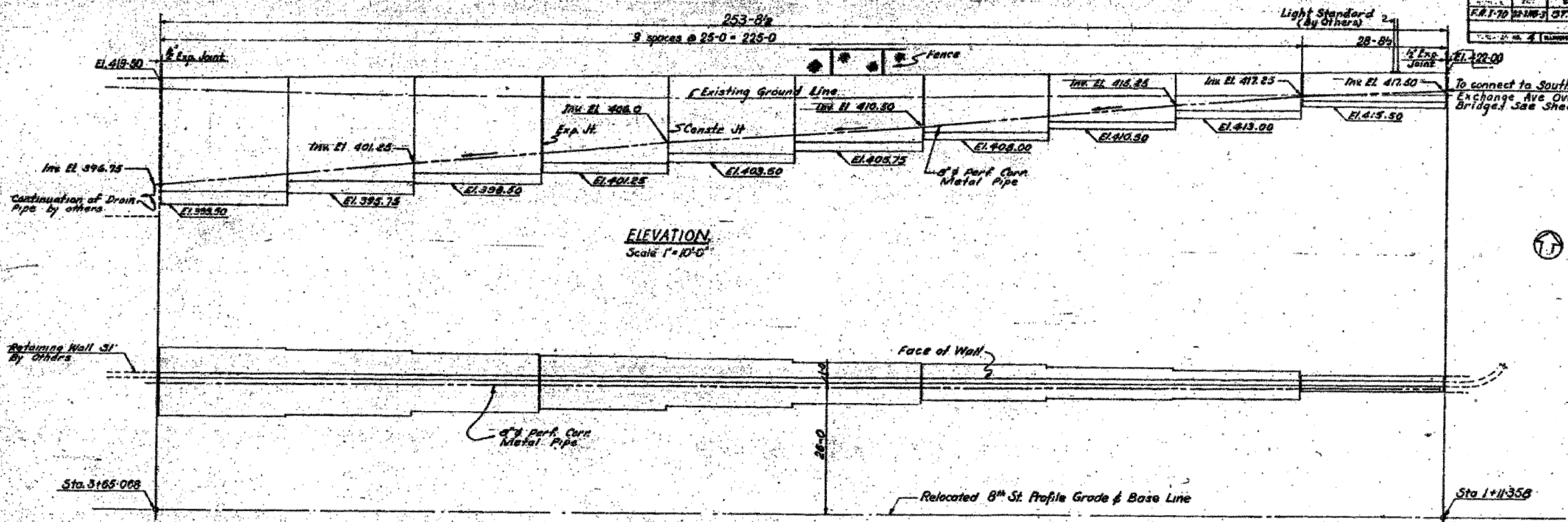
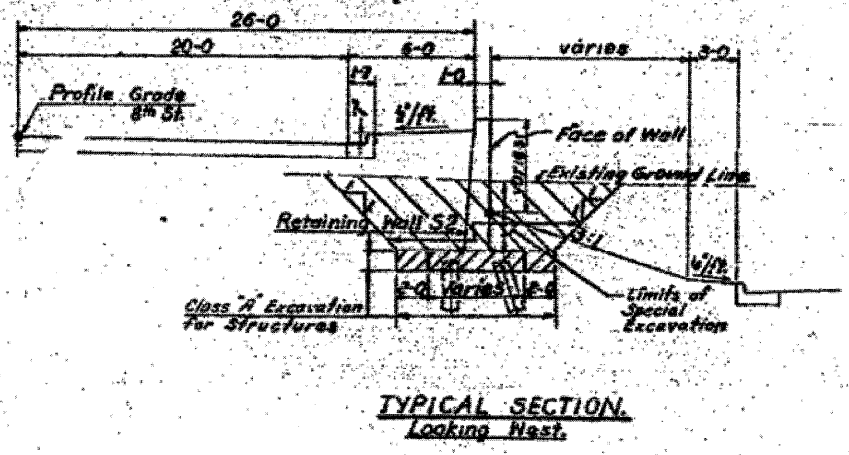


PROJECT	NO.	SHEET	TOTAL SHEETS
EAST ST. LOUIS EXPRESSWAY	ST. CLAIR	79	10

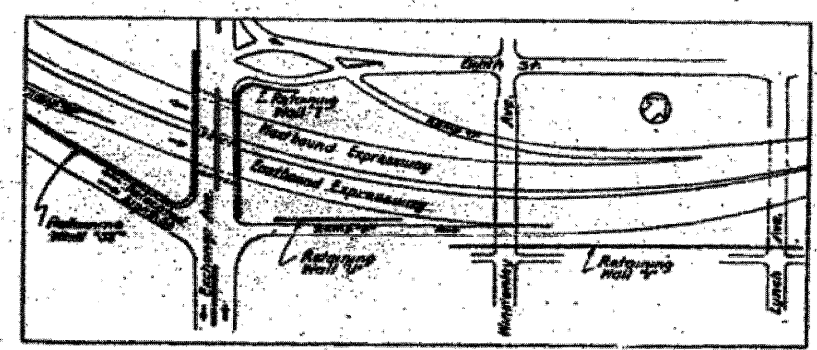


ELEVATION
Scale 1"=10'-0"

PLAN
Scale 1"=10'-0"



TYPICAL SECTION
Looking West



LOCATION PLAN

STATE OF ILLINOIS
DEPARTMENT OF PUBLIC WORKS & BLDGS.
DIVISION OF HIGHWAYS
CITY OF EAST ST. LOUIS
EAST ST. LOUIS EXPRESSWAY
RETAINING WALL "S2"
GENERAL PLAN
H. W. LOCHNER, INC.
ENGINEERS
CHICAGO, ILLINOIS
DATE: APRIL 1958 SHEET NO. 15

Drawn by - E.W.
Checked by - R.T.

FILE NAME =	USER NAME =	DESIGNED -	REVISED -	STATE OF ILLINOIS DEPARTMENT OF TRANSPORTATION	EXISTING BRIDGE PLAN - WALL-S2	F.A.I. RTE.	SECTION	COUNTY	TOTAL SHEETS	SHEET NO.
D8TRI-76C52-SHT-Wall-S2.dgn	sear-sb	DRAWN - CF	REVISED -			82-1-R(A), 82-1-R(B)	ST. CLAIR	629	485	
		CHECKED - DD	REVISED -			64/998/70	CONTRACT NO. 76C52			
		DATE - 07/21/10	REVISED -			FED. ROAD DIST. NO.	ILLINOIS FED. AID PROJECT			