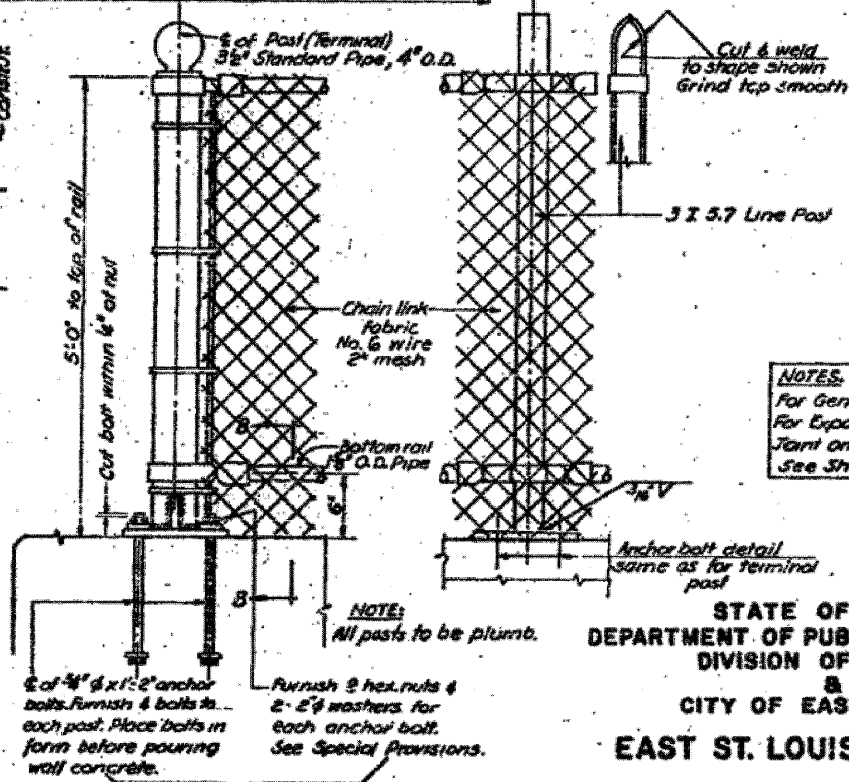
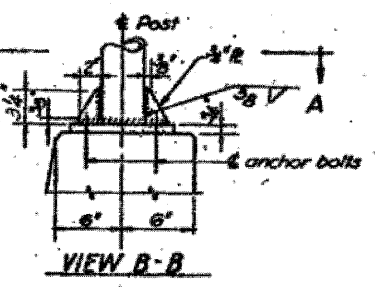
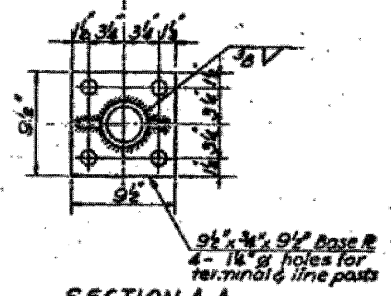


Designed by: F.Z.  
 Drawn by: E.M.  
 Checked by: S.K.



F.A.I. NO.	SECTION	COUNTY	TOTAL SHEETS	SHEET NO.
FAI-70	82-1-R(A), 82-1-R(B)	ST. CLAIR	77	41

Fence Post  
 For spacing see Elev.



**NOTES:**  
 For General Notes see Sheet No. 1.  
 For Expansion Joint, Construction Joint and Drainage Details see Sheet No. 24.

STATE OF ILLINOIS  
 DEPARTMENT OF PUBLIC WORKS & BLDGS.  
 DIVISION OF HIGHWAYS  
 CITY OF EAST ST. LOUIS  
**EAST ST. LOUIS EXPRESSWAY**  
 RETAINING WALL "32"  
 DETAILS

H. W. LOCHNER, INC.  
 ENGINEERS  
 CHICAGO, ILLINOIS

DATE: APRIL 1958 SHEET NO. 17

FILE NAME = DBTR1-76C52-SHT-Wall-S2_01.dgn	USER NAME = searsh	DESIGNED -	REVISED -	STATE OF ILLINOIS DEPARTMENT OF TRANSPORTATION	EXISTING BRIDGE PLAN - WALL-S2 01	F.A.I. RTE. = 82-1-R(A), 82-1-R(B)	SECTION = 82-1-R(A), 82-1-R(B)	COUNTY = ST. CLAIR	TOTAL SHEETS = 629	SHEET NO. = 486
	PLOT SCALE = 2.0000 1/16"	DRAWN - GF	REVISED -							
	PLOT DATE = 1/23/2012	CHECKED - DD	REVISED -							
		DATE = 07/21/10	REVISED -							
					SCALE: NONE	SHEET NO. 2 OF 3 SHEETS	STA. TO STA.			
										FED. ROAD DIST. NO. ILLINOIS FED. AID PROJECT CONTRACT NO. 76C52