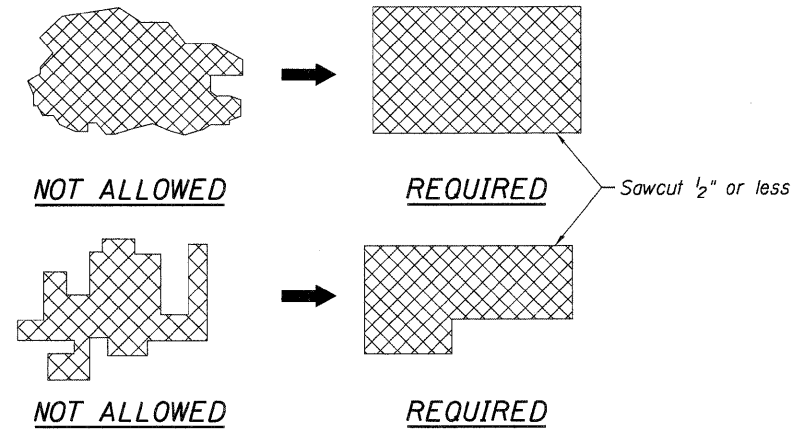


GENERAL NOTES:

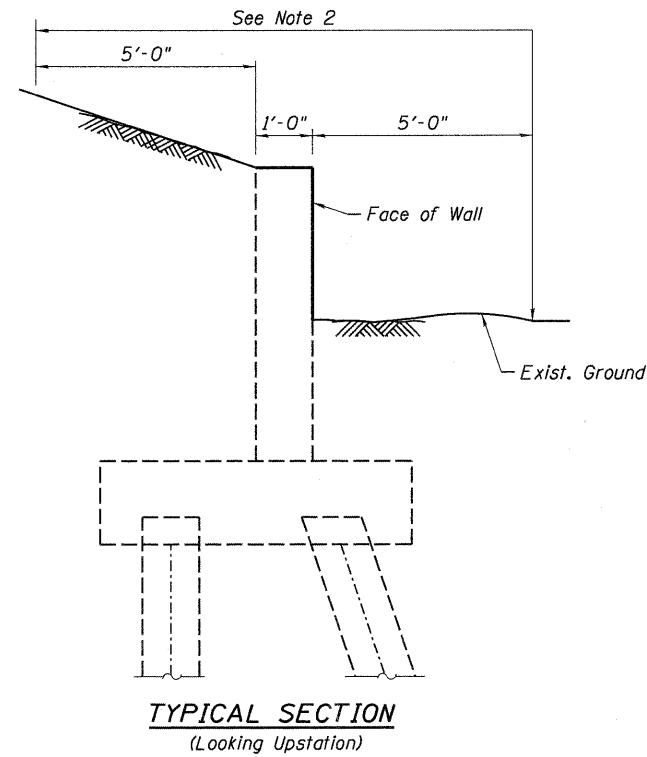
1. Wall repair locations are approximate and were determined from field inspection performed at the time of plan preparation. The necessary adjustments based on current field conditions will be made at time of construction. Such variations shall not be cause for additional compensation for a change in the scope of work. However, the Contractor will be paid for the actual quantity furnished at the unit price bid for the work.
2. The Contractor shall remove all grass, weeds, tree limbs, bushes from the top of retaining wall, within limits as shown. Cost included with Structural Repair of Concrete.
3. All exposed concrete edges shall have $\frac{3}{4}$ " x 45° chamfers except where shown otherwise. Chamfers on vertical edges where appropriate shall be continued a minimum of one foot below finished ground level.
4. Existing reinforcing steel which is exposed by the concrete removal process, but is to remain embedded in the existing structure and reused in the new concrete, shall be cleaned to be free of existing concrete and rust, and straightened if necessary. Existing reinforcing steel which is cut, stretched or damaged by the Contractor during the concrete removal process shall be replaced by embedded reinforcing steel or anchorage, equal to or greater than the size of original reinforcing steel, at no cost to the contract.
5. Plan dimensions and details relative to existing plans are subject to nominal construction variations. The Contractor shall field verify existing dimensions and details affecting new construction and make necessary approved adjustments prior to construction or ordering of materials. Such variations shall not be cause for additional compensation for a change in scope of the work, however, the Contractor will be paid for the quantity actually furnished at the unit price bid for the work.
6. See Sheet No. 421 thru. 423 for existing wall "V" plans. The existing plans, however, may not show all modifications that have been made to the wall over the years. The completeness of these plans is not guaranteed and no responsibility is assumed by the IDOT for their accuracy.



NOTES:

- A. Do not feather edges.
- B. Finish and color to match existing adjacent surfaces.

TYPICAL PATCH CONFIGURATIONS



FILE NAME = RW-V-76C52.S01.GP-02.dgn	USER NAME = searsb	DESIGNED	REVISED -	STATE OF ILLINOIS DEPARTMENT OF TRANSPORTATION	GENERAL NOTES & TYPICAL SECTION EXISTING RETAINING WALL "V"			F.A.I. RTE.	SECTION	COUNTY	TOTAL SHEETS	SHEET NO.
	PLOT SCALE = 0.2" / 1'	DRAWN	REVISED -					•	82-1-R(A), 82-1-R(B)	ST. CLAIR	629	492
	PLOT DATE = 1/23/2012	CHECKED	REVISED -		•	64/998/70	CONTRACT NO. 76C52		FED. ROAD DIST. NO. [ILLINOIS] FED. AID PROJECT			
	DATE 1-20-12	REVIS	REVISED -		SCALE:	SHEET NO. S-2 OF S-2 SHEETS	STA.	TO STA.				