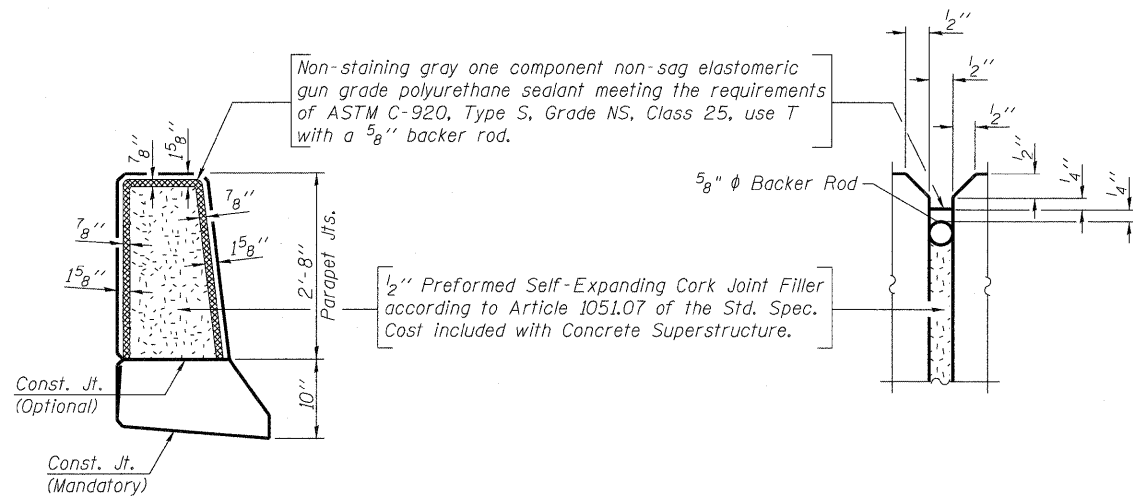
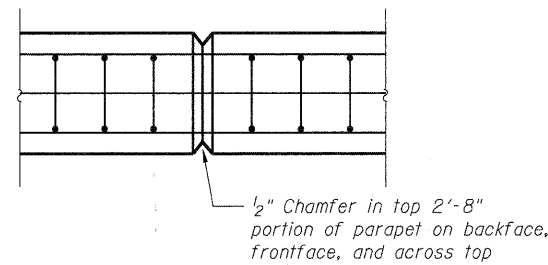


**SECTION A-A**

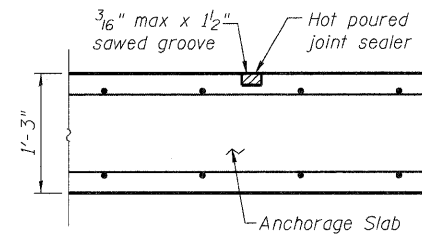
\* The M.S.E. wall supplier's internal stability design shall account for the anchorage slab's bearing pressure surcharge of 1.0 ksf and horizontal sliding force of 0.5 kips/ft. of wall.



**PARAPET EXPANSION JOINT DETAILS**

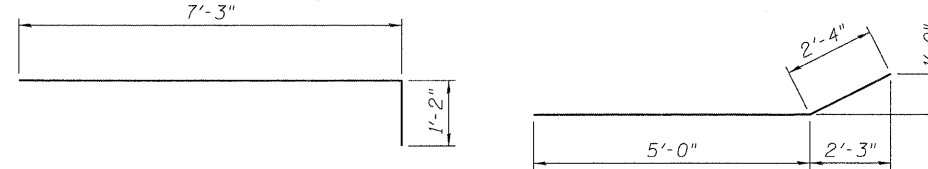


**PARAPET CONTRACTION JOINT**



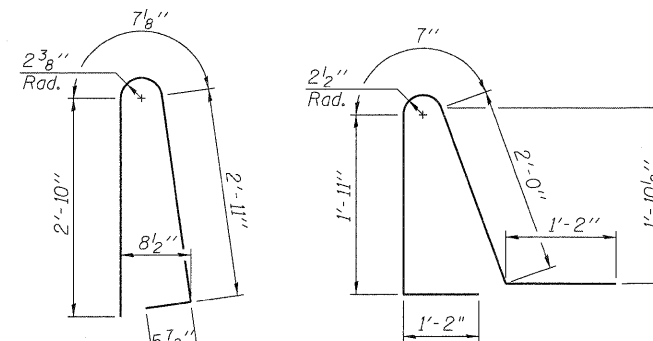
**TRANSVERSE CONTRACTION JOINT**

See Article 420.05 & 420.12 of the Standard Specifications



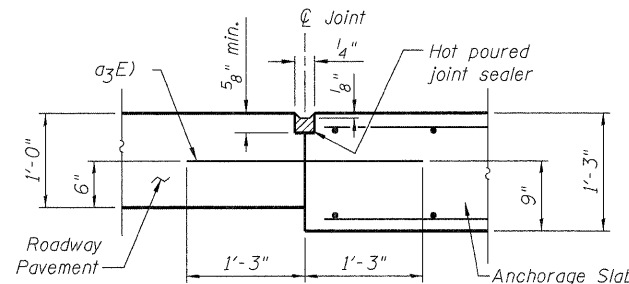
**BAR a1(E)**

**BAR a2(E)**



**BAR d1(E)**

**BAR d2(E)**



**LONGITUDINAL CONSTRUCTION JOINT**

See Article 420.05 & 420.12 of the Standard Specifications

**SUPERSTRUCTURE  
BILL OF MATERIAL**

Bar	No.	Size	Length	Shape
a1(E)	203	#7	8'-5"	—
a2(E)	203	#7	7'-4"	—
a3(E)	77	#6	2'-6"	—
b1(E)	66	#6	29'-0"	—
b2(E)	40	#6	33'-5"	—
d1(E)	166	#5	6'-10"	⌒
d2(E)	166	#5	6'-10"	⌒
e1(E)	42	#4	27'-2"	—
e2(E)	5	#8	35'-10"	—
e3(E)	6	#4	27'-6"	—
	Item		Unit	Quantity
Reinforcement Bars, Epoxy Coated			Pound	15,430
Concrete Superstructure			Cu. Yds.	74
Protective Coat			Sq. Yds.	176

FILE NAME = 082-W310.76C52.SB4.Details.dgn

USER NAME = searab

DESIGNED DEV

REVISED -

DRAWN GF

REVISED -

PLOT SCALE = 0:2.000000 '1' / 1"

CHECKED ATB

REVISED -

PLOT DATE = 1/23/2012

DATE

JUNE 10, 2011

REVISED -

**STATE OF ILLINOIS  
DEPARTMENT OF TRANSPORTATION**

**RETAINING WALL 082-W310  
DETAILS**

SCALE: N.T.S.

SHEET NO. S-4 OF S-5 SHEETS

STA. 65+23.00 TO STA. 66+75.00

F.A.I. RTE.	SECTION	COUNTY	TOTAL SHEETS	SHEET NO.
	82-1-RIA, 82-1-RIB	ST. CLAIR	629	496
* 64/998/70			CONTRACT NO. 76C52	
FED. ROAD DIST. NO.		ILLINOIS FED. AID PROJECT		