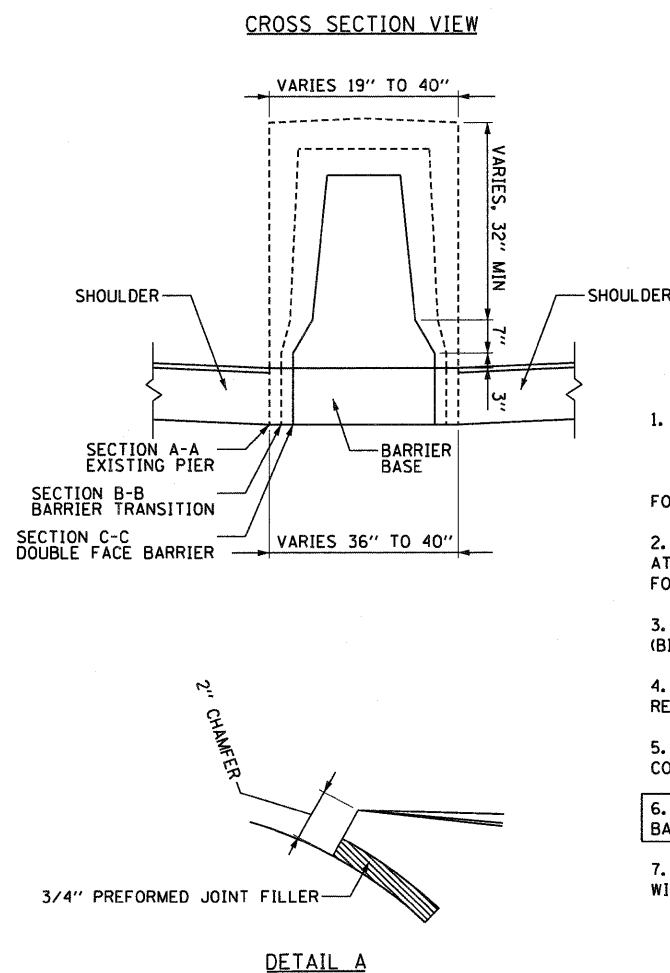
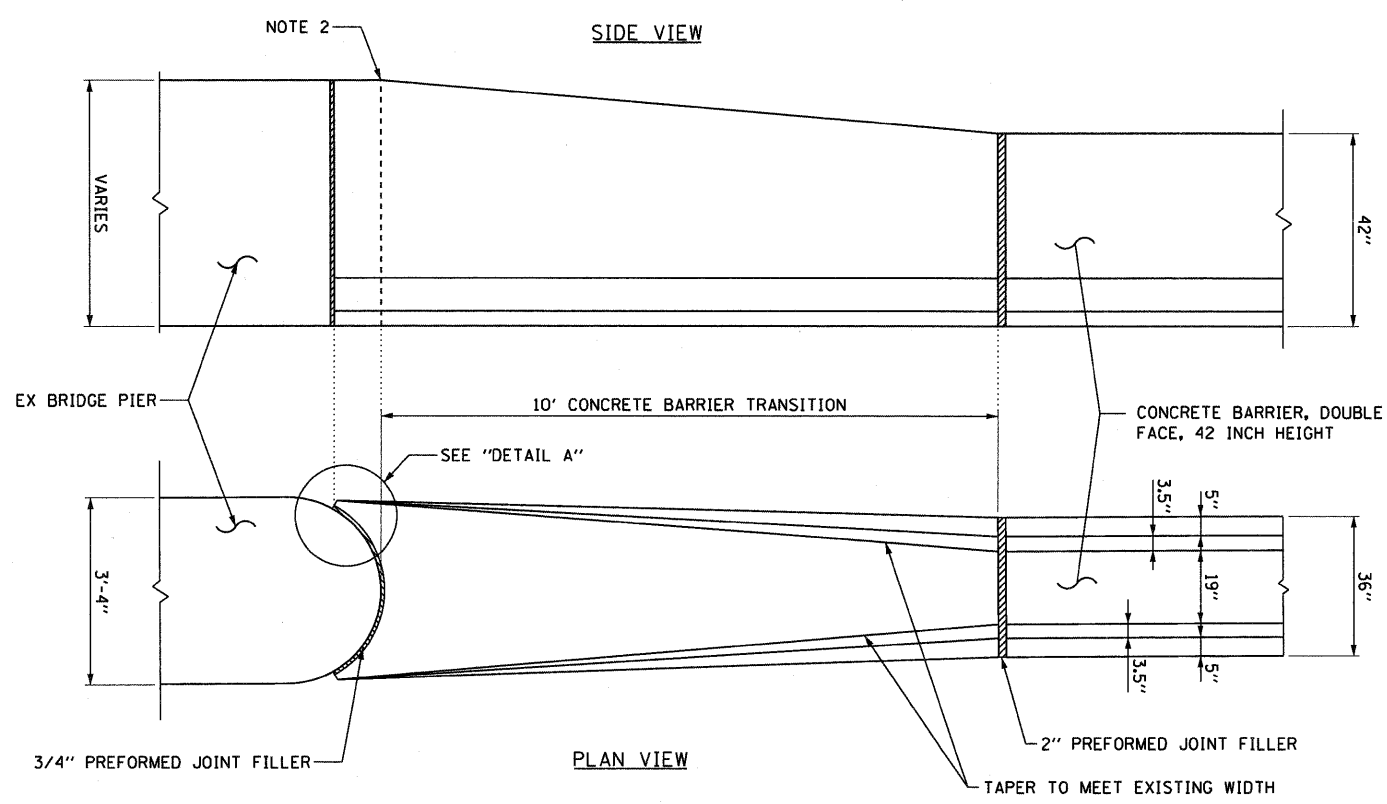


PLAN  
 CONCRETE BARRIER, DOUBLE FACE, 42 INCH HEIGHT  
 TRANSITION TO EXISTING 9TH STREET BRIDGE PIER (SN 082-0326)

10 0 10 20  
 SCALE IN FEET

PLAN  
 CONCRETE BARRIER, DOUBLE FACE, 42 INCH HEIGHT  
 TRANSITION TO EXISTING 15TH STREET BRIDGE PIER (SN 082-0377)

10 0 10 20  
 SCALE IN FEET



- NOTES:**
1. ALL STATIONING BASED OFF OF EB I-64
  2. TAPER BARRIER TRANSITION TO MEET TOP OF CRASHWALL. ELEVATION TO BE VERIFIED IN THE FIELD

- GENERAL NOTES**
1. CONTRACTOR OPTIONS FOR FILL BETWEEN BARRIER WALLS (WHEN NEEDED):  
 A. PLACE 4" CLASS SI CONCRETE.  
 B. PLACE 12" OF GRANULAR MATERIAL AT BASE BETWEEN WALLS.  
 C. PLACE GRANULAR MATERIAL FROM BASE TO BOTTOM OF 4" CAP. FORMING MATERIAL FOR 4" CAP MAY REMAIN IN PLACE.
  2. REINFORCING STEEL SHALL EXTEND CONTINUOUS THROUGH CONSTRUCTION JOINTS. AT JOINTS WITH EXISTING BARRIER WALL TO REMAIN, SEE STANDARD 637006 FOR JOINT DETAILS.
  3. EXPANSION JOINTS SHOWN ON THIS DRAWING SHALL BE PREFORMED JOINT MATERIAL (BITUMINOUS TYPE) FILLER SHALL MEET AASHTO DESIGNATION M-33.
  4. ALL REINFORCING STEEL SHALL BE GRADE 40 OR GRADE 60 MEETING THE REQUIREMENTS OF AASHTO M31 OR ASTM A615.
  5. ALL WORK DETAILED HEREIN SHALL BE INCLUDED IN THE COST OF THE VARIOUS CONCRETE BARRIER PAY ITEMS.
  6. PREFORMED JOINT FILLER SHALL BE INCLUDED IN THE COST OF THE CONCRETE BARRIER TRANSITION.
  7. JOINTS SHALL BE CONSTRUCTED AS SHOWN ON THE PLANS AND IN ACCORDANCE WITH ARTICLE 637.08 OF THE STANDARD SPECIFICATIONS

FILE NAME = 08Tr1-76C52-sht-details_05.dgn	USER NAME = searab	DESIGNED CRH	REVISED -	<b>STATE OF ILLINOIS DEPARTMENT OF TRANSPORTATION</b>	<b>ROADWAY DETAILS</b>	F.A.I. RTE.	SECTION	COUNTY	TOTAL SHEETS	SHEET NO.
		DRAWN BS	REVISED -			•	82-1-RIA), 82-1-R(B)	ST. CLAIR	629	502
		CHECKED DBM	REVISED -			•	64/998/70	CONTRACT NO. 76C52		
		DATE 1-20-12	REVISED -			SCALE: 1" = 10'		SHEET NO. 5 OF 26 SHEETS	STA.	TO STA.