

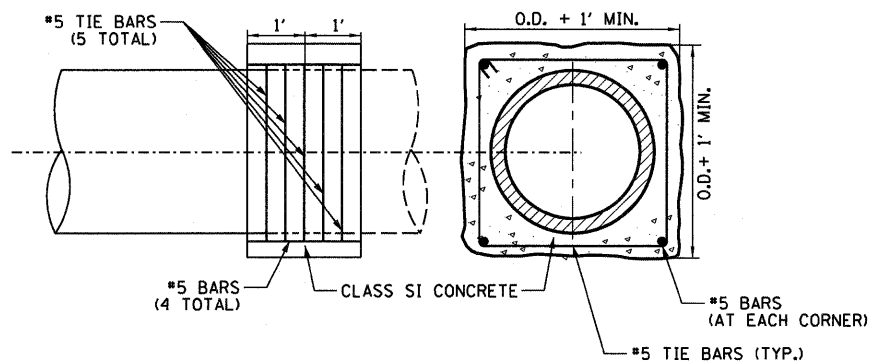
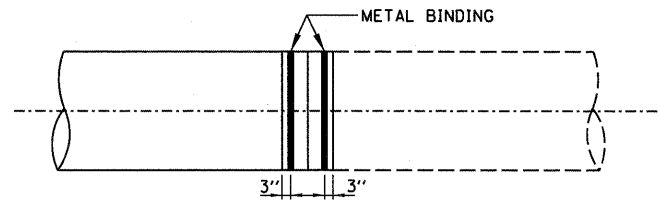
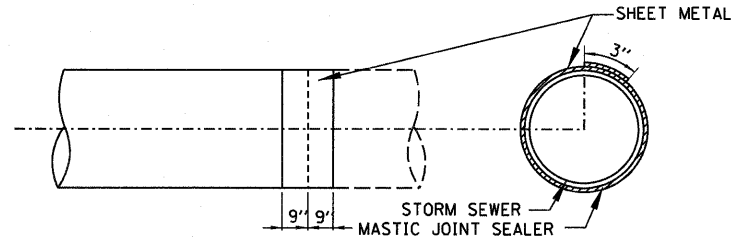
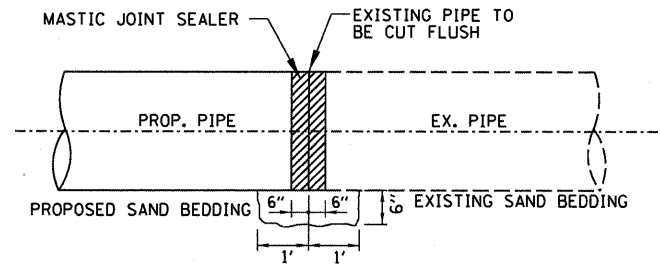
## CONCRETE COLLAR

### CONSTRUCTION SEQUENCE

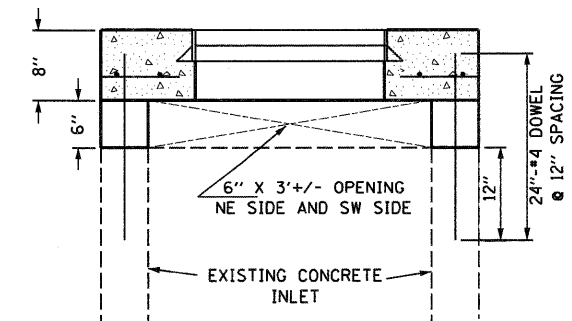
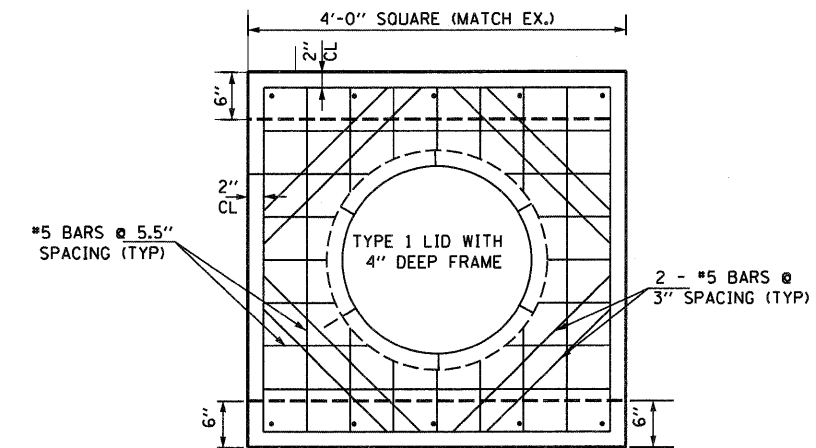
1. CUT THE EXISTING END OF THE PIPE SO AS TO PRESENT A FLUSH BUTT JOINT. BRUSH AND CLEAN ALL PIPES.
2. APPLY THE MASTIC JOINT SEALANT TO THE FIRST 6" OF EACH PIPE.
3. BUTT THE PIPES TOGETHER LEAVING A MINIMUM OF 1' X 6" DEEP EXCAVATION UNDER AND AROUND EACH PIPE END.
4. CUT SHEET METAL GAGE 19 OR GEOTEXTILE FABRIC CLASS B, 1.5' WIDE AND THE LENGTH OF THE OUTSIDE CIRCUMFERENCE OF THE PIPE PLUS 3" LONG.
5. WRAP THE SHEET METAL OR GEOTEXTILE FABRIC CLASS B AROUND THE PIPES, 9" ON EACH SIDE OF THE JOINT, STARTING AT THE TOP OF THE PIPE.
6. LAP THE SHEET METAL OR GEOTEXTILE FABRIC CLASS B, AT LEAST 3" AT THE TOP OF THE PIPE AND PLACE THE MASTIC JOINT SEALANT BETWEEN THE LAP.
7. PLACE TWO METAL BANDS AROUND THE SHEET METAL AND TIGHTEN.
8. WIPE OFF ANY EXCESS MASTIC JOINT SEALANT THAT OZZES OUT FROM BETWEEN THE SHEET METAL OR GEOTEXTILE FABRIC CLASS B AND THE PIPES.
9. PLACE CONCRETE AROUND THE JOINT.

### GENERAL NOTES:

1. CONCRETE COLLAR IS TO BE USED AT LOCATIONS WHERE A PROPOSED PIPE JOINS AN EXISTING PIPE.
2. WHEN THE CONNECTION LOCATION SHOWN ON THE PLANS IS WITHIN 2' OF AN EXISTING JOINT, GO TO THE EXISTING JOINT.
3. CARE MUST BE TAKEN TO PREVENT DEBRIS FROM ENTERING THE PIPE. ALL DEBRIS THAT ENTERS THE PIPE MUST BE REMOVED. THE PIPE MUST BE LEFT CLEAN AND UNOBSTRUCTED UPON COMPLETION OF THE CONTRACT.
4. CARE MUST BE TAKEN TO PREVENT ANY PART OF THE NEW PIPE FROM PROJECTING INTO THE EXISTING PIPE.



CONCRETE COLLAR QUANTITIES		
SEWER DIAMETER (IN)	CLASS SI CONCRETE (CU YD)	REINFORCEMENT BARS, EPOXY COATED (POUNDS)
8	0.23	29
12	0.30	34
15	0.36	39
18	0.42	43
24	0.54	51
30	0.68	60
36	0.83	68
42	0.99	77
48	1.16	85



**DRAINAGE DETAIL - REPLACEMENT OPEN THROAT INLET TOP**

FILE NAME = DBTR1-76C52-sht-drain-details-01-concrete-collar.dgn	USER NAME = sear-sb	DESIGNED N/A	REVISED -
		DRAWN CJS	REVISED -
	PLDT SCALE = 100.0000' / in.	CHECKED MAN	REVISED -
	PLDT DATE = 1/24/2012	DATE 1-20-12	REVISED -

**STATE OF ILLINOIS  
DEPARTMENT OF TRANSPORTATION**

**DRAINAGE DETAILS - CONCRETE COLLAR &  
OPEN THROAT INLET REPLACEMENT TOP**

SCALE: NONE SHEET NO. 1 OF 4 SHEETS STA. NONE TO STA. NONE

F.A.I. RTE.	SECTION	COUNTY	TOTAL SHEETS	SHEET NO.
•	82-1-RIA), 82-1-R(B)	ST. CLAIR	629	524
• 64/998/70		CONTRACT NO. 76C52		
FED. ROAD DIST. NO. ILLINOIS FED. AID PROJECT				