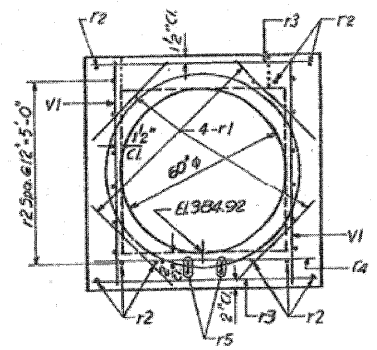
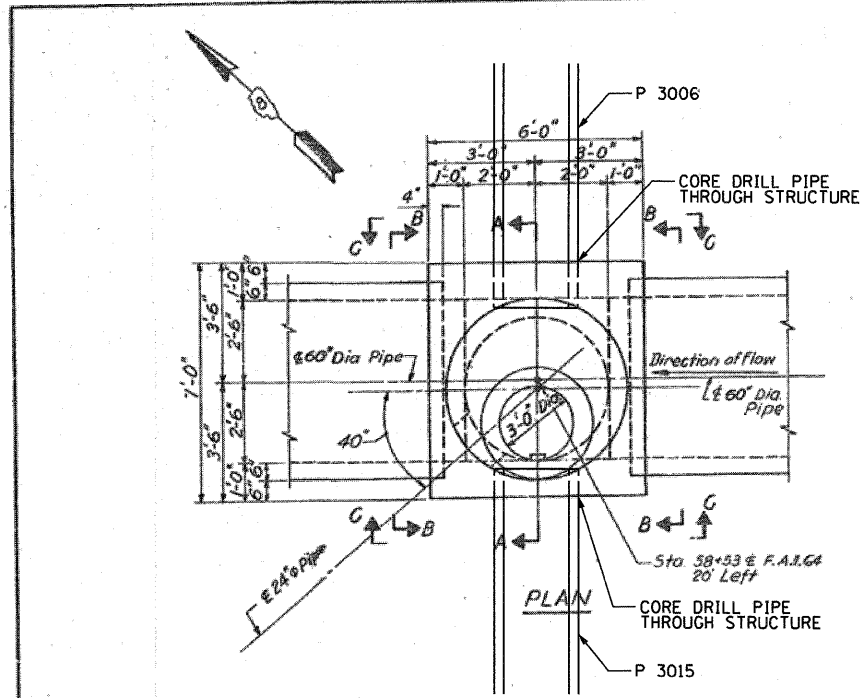
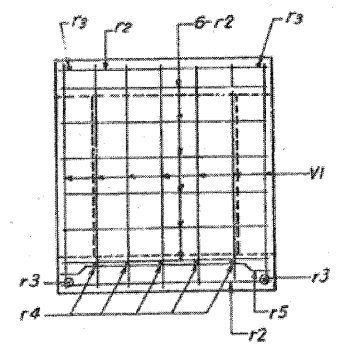


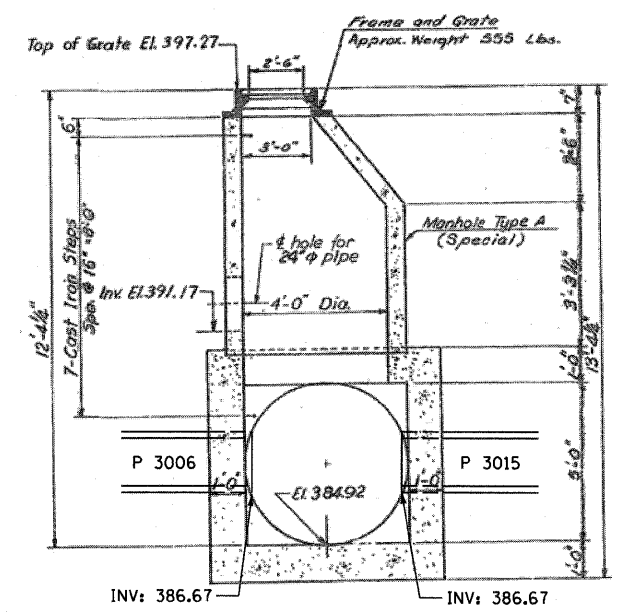
THIS DETAIL HAS BEEN PROVIDED AS THE AS-DESIGNED PLAN FOR THE EXISTING JUNCTION CHAMBER ("S 3007") SHOWN ON SHEET 3 OF THE DRAINAGE AND UTILITY PLAN. PIPES "P 3006" AND "P 3015" ARE TO BE CORE DRILLED INTO THE JUNCTION CHAMBER AT AN ELEVATION OF 387.50.



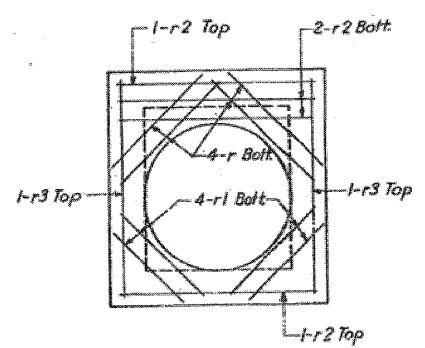
SECTION B-B



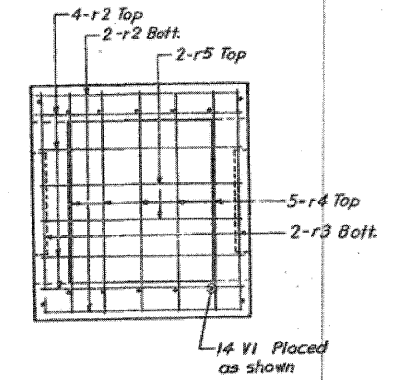
SECTION C-C



SECTION A-A



PLAN-TOP SLAB

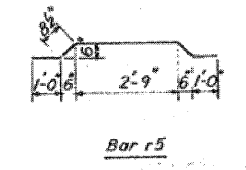


PLAN-BOTTOM SLAB

ROUTE NO.	SECTION	COUNTY	TOTAL SHEETS	SHEET NO.
F.A.I. - 64	82-1	ST. CLAIR	108	53
FED. ROAD DIST. NO. 4		ILLINOIS	PROJECT	

MARK	NO.	SIZE	LENGTH	SHAPE
r	4	#5	3'-9"	---
r1	12	#5	3'-0"	---
r2	22	#5	5'-8"	---
r3	4	#5	6'-6"	---
r4	5	#7	6'-6"	---
r5	2	#5	6'-2"	---
VI	14	#5	6'-9"	---
Item		Unit	Total	
Class 'X' Concrete		Cu. Yds.	5.3	
Reinforcement Bars		Lbs.	388	

- NOTES:**
- The Manhole Type A (Special) Shall Be Constructed In Accordance With Std. 1527 Except As Shown.
 - The cost of all excavation required to construct the junction chamber and the cost of furnishing and placing the Manhole Type A (Special) and the Frame & Grate as specified on the junction chamber, shall be included in the contract unit price per cubic yard for Class 'X' Concrete. (See Special Provisions)
 - Drawing not to scale, refer to dimensions shown.



Bar r5

STATE OF ILLINOIS
 DETAIL
 JUNCTION CHAMBER 'A'
 (STRUCTURE NO. 18)
 F.A.I. ROUTE 64 STA. 58+53.00
 H. W. LOCKNER, INC.
 ENGINEERS
 CHICAGO, ILLINOIS

DESIGNED BY: J.J.
 DRAWN BY: J.J.
 CHECKED BY: B.B.