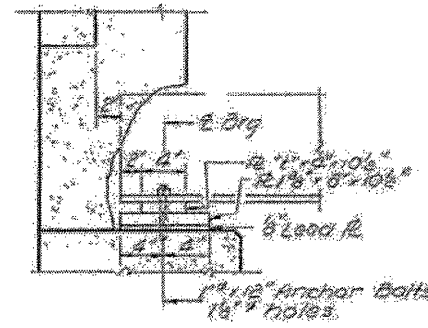


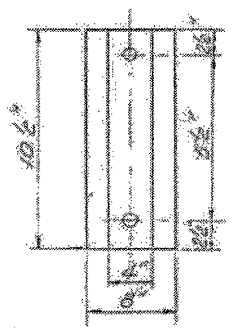
# FOR INFORMATION ONLY

STATE OF ILLINOIS  
DEPARTMENT OF TRANSPORTATION

PROJECT NO.	SECTION	COUNTY	TOTAL SHEETS	SHEET NO.
110 BC-2	Randolph	IL	15	12



ELEVATION



PLAN ABUTMENTS

Δ Values

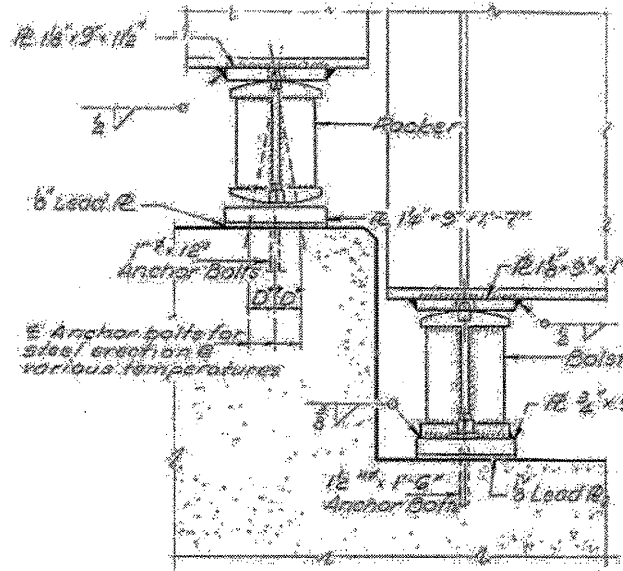
Bms. 1 & 6	3"
Bms. 2 & 5	2 1/2"
Bms. 3 & 4	4 1/2"

**NOTES ON SETTING OF ANCHOR BOLTS AT EXPANSION BEARINGS**

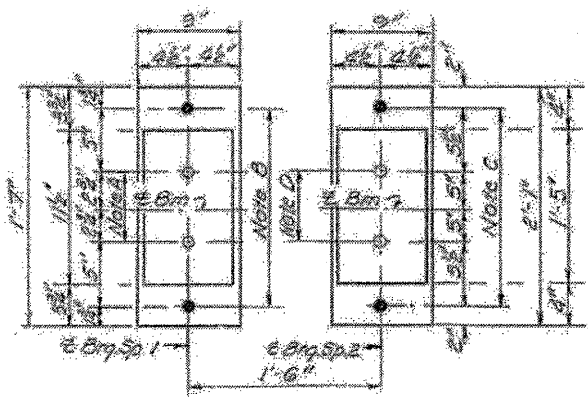
a)  $D^*$  (Side of Brg. away from fixed brg.)  
 $D^* = \frac{1}{100}$  per each 100' of expansion for every 15' fall below the normal temperature of 50°F

$D^*$  (Side Brg. toward fixed brg.)  
 $D^* = \frac{1}{100}$  per 100' of expansion for every 15' rise above the normal temperature of 50°F

b) After brgs. have been erected and dimensions  $D^*$  or  $D^{**}$  determined, holes shall be drilled and anchor bolts shall be grouted in place. All fixed anchor bolts may be built into the masonry.



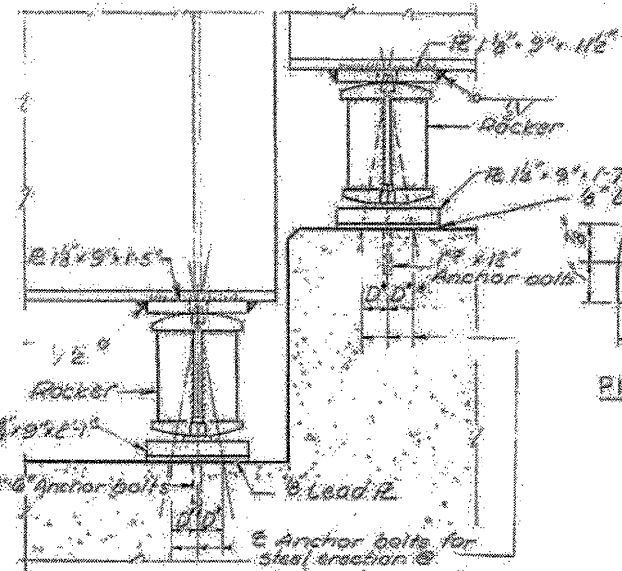
ELEVATION



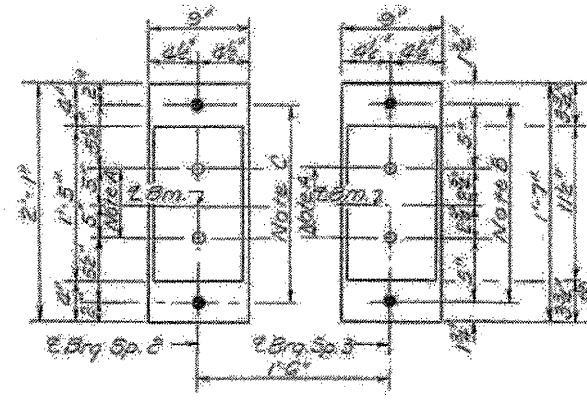
EXP. BRG. FIXED BRG.  
PIER #1

**NOTE A**  
1 1/2" holes - 1" deep in top IR for pintles. Thread or press fit pintles into bottom IR.

**NOTE B**  
1 1/2" holes for 1" Anchor bolts. 1/4" x 2 1/2" x 2 1/2" IR Washers under nut.



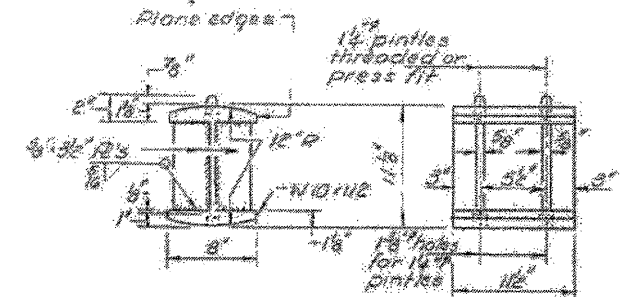
ELEVATION



EXP. BRG. EXP. BRG.  
PIER #2

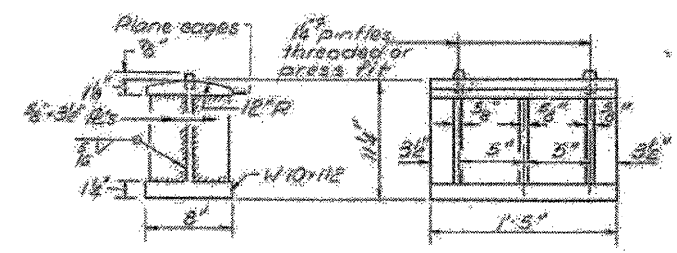
**NOTE C**  
2" holes for 1 1/2" Anchor bolts. 3/8" x 3 1/2" x 3 1/2" IR Washers under nut.

**NOTE D**  
1 1/2" holes 1" deep in top IR only to 1 1/4" pintles.

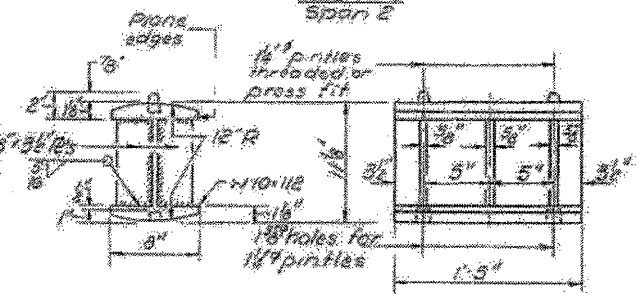


ROCKER EXP. BRG. PIER #1 & PIER #2  
Spans 1 & 2

PINTLE



BOLSTER FIXED BRG.  
PIER #1  
Span 2



ROCKER EXP. BRGS.  
PIER #2  
SPAN #2

BEARING DETAILS  
E.A. RT. 14 SEC. 110 BC-2  
RANDOLPH COUNTY  
STA. 932+00.00

DESIGNED - J. Uehle	EXAMINED - _____	DATE - April 27, 2012
CHECKED - B. Williams	ENGINEER OF STRUCTURAL SERVICES	
DRAWN - J. Uehle	PASSED - _____	REVISED - _____
CHECKED - B. Williams	ENGINEER OF BRIDGES AND STRUCTURES	REVISED - _____

STATE OF ILLINOIS  
DEPARTMENT OF TRANSPORTATION

FOR INFORMATION ONLY - BEARINGS  
SN 079-0007

SHEET NO. 8 OF 8 SHEETS

F.A.P. RTE.	SECTION	COUNTY	TOTAL SHEETS	SHEET NO.
861	110BR-1	RANDOLPH	14	14
			CONTRACT NO. 76F07	
ILLINOIS FED. AID PROJECT				