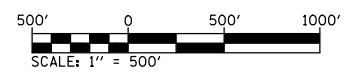
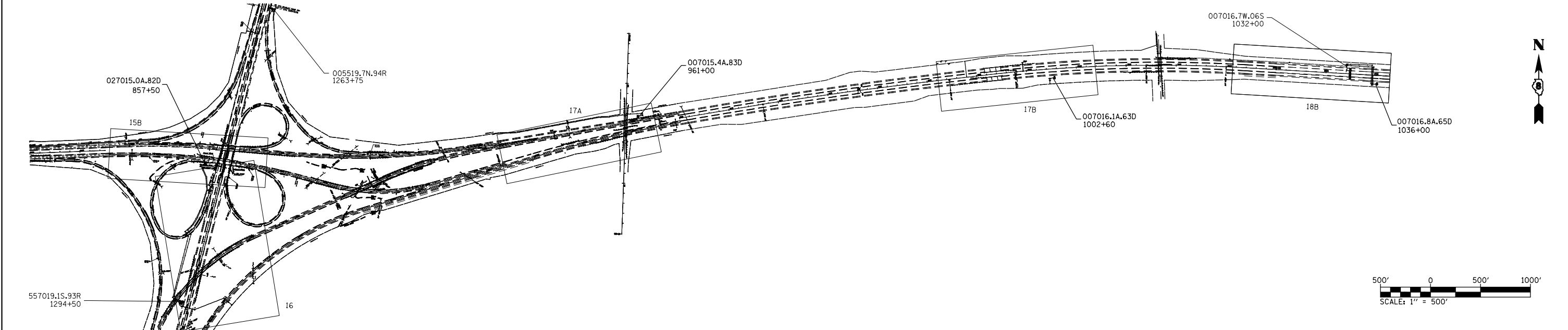


FIELD EQUIPMENT NUMBERING SYSTEM	
EXAMPLE : 006402.8W.11D	
0064	DESIGNATES HIGHWAY WHERE FIELD EQUIPMENT IS LOCATED.
006402.8	DESIGNATES MILE MARKER WHERE FIELD EQUIPMENT IS LOCATED.
006402.8W	DESIGNATES DIRECTION VIDEO DETECTOR IS MONITORING TRAFFIC OR DIRECTION TRAFFIC IS TRAVELLING TO RECEIVE DMS MESSAGE.
006402.8W.11	NUMBER ASSIGNED TO THAT FIELD EQUIPMENT
006402.8W.11D	A = ALL DIRECTIONS H = HAR SIGNAGE WITH BEACON D = VEHICLE DETECTION R = RADAR DETECTION C = CAMERA (P/T/Z SURVEILLANCE)

ITS ELEMENTS SCHEDULE			
CCTV CAMERA	RADAR DETECTION	STA.	PLAN SHEET
027009.0A C		184+86 LT(IL 157)	11 OF 23
	027009.0A.76D	571+45 RT (EB)	11 OF 23
	027009.9A.77D	618+80 RT (EB)	12A OF 23
	027010.8A.78D	667+50 RT (EB)	12B OF 23
	027012.0A.79D	716+20 RT (EB)	13 OF 23
	027012.6A.80D	758+00 RT (EB)	14A OF 23
	027013.3A.81D	794+00 RT (EB)	14B OF 23
	027015.0A.82D	857+50 RT (EB)	15B OF 23
	007015.4A.83D	961+00 LT (WB)	17A OF 23
	007016.1A.63D	1002+60 RT (EB)	17B OF 23
	007016.8A.65D	1036+00 RT (EB)	18A OF 23

CAMERAS WILL BE INSTALL IN FUTURE BY OTHERS



FILE NAME =	USER NAME = prestonme	DESIGNED -	REVISED -
et:\pw\work\p\dot\prestonme\d0279896\d076f22-sht-ITS.dgn		DRAWN -	REVISED -
	PLOT SCALE = 100.0000' / in.	CHECKED -	REVISED -
	PLOT DATE = 2/2/2012	DATE -	REVISED -

**STATE OF ILLINOIS
DEPARTMENT OF TRANSPORTATION**

ITS POLE LOCATION MAP

SCALE: SHEET NO. OF SHEETS STA. TO STA.

F.A.I. RTE.	SECTION	COUNTY	TOTAL SHEETS	SHEET NO.
270/70	DIST 8 ITS 2012-1	MADISON	23	9
CONTRACT NO. 76F22				
ILLINOIS FED. AID PROJECT				