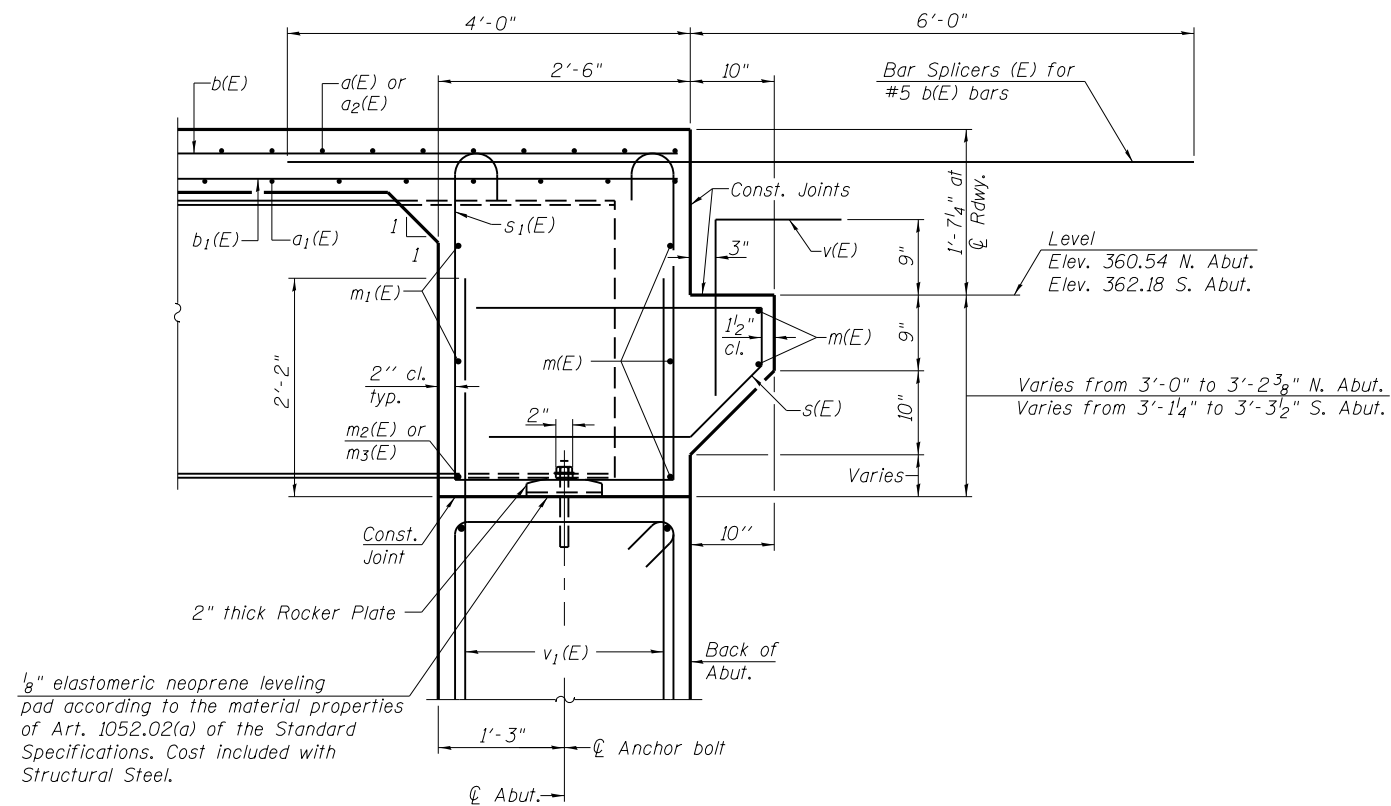


DIAPHRAGM ELEVATION AT ABUTMENT
(Looking North at N. Abutment)

Notes:
 Reinforcement bars in diaphragm are billed with superstructure on sheet 10 of 20.
 Concrete in diaphragm is included with Concrete Superstructure on sheet 10 of 20.
 For details of bars s(E), s₁(E) & v(E), see sheet 10 of 20.

MIN. BAR LAP
 #6 bar = 3'-4"



SECTION A-A

CB Coombe-Bloxdorf P.C.
 - CIVIL ENGINEERS -
 - STRUCTURAL ENGINEERS -
 - LAND SURVEYORS -
 Design Firm License No. 184-002703

F.A.P. RTE.	SECTION	COUNTY	TOTAL SHEETS	SHEET NO.
885	6B-3	POPE	41	32
CONTRACT NO. 78165				

ILLINOIS FED. AID PROJECT

FILE NAME =	USER NAME = \$USER\$	DESIGNED - CME	REVISED -
et:\pw\work\p1dot\lavenderba\d0293530\0760030-78165-011-diaphragm.dgn		CHECKED - MCB	REVISED -
	PLOT SCALE = 0:2.000002 '1' / in.	DRAWN - CFC/MML	REVISED -
CB PROJECT NO 08056-14	PLOT DATE = 1/23/2012	CHECKED - CME	REVISED -

STATE OF ILLINOIS
 DEPARTMENT OF TRANSPORTATION

INTEGRAL ABUTMENT DIAPHRAGM DETAILS
 STRUCTURE NO. 076-0030

SHEET NO. 11 OF 20 SHEETS