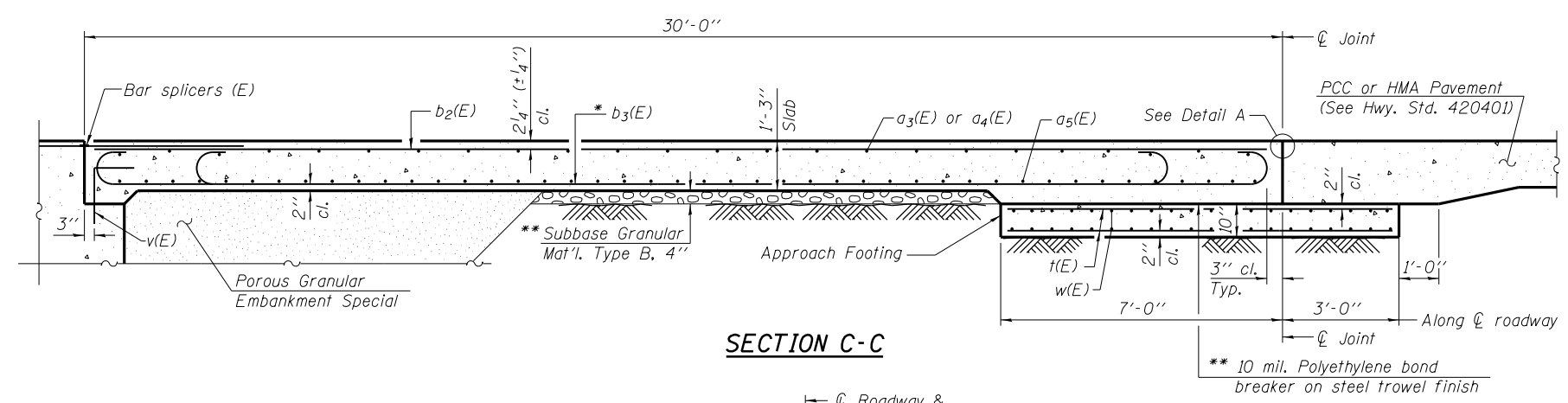
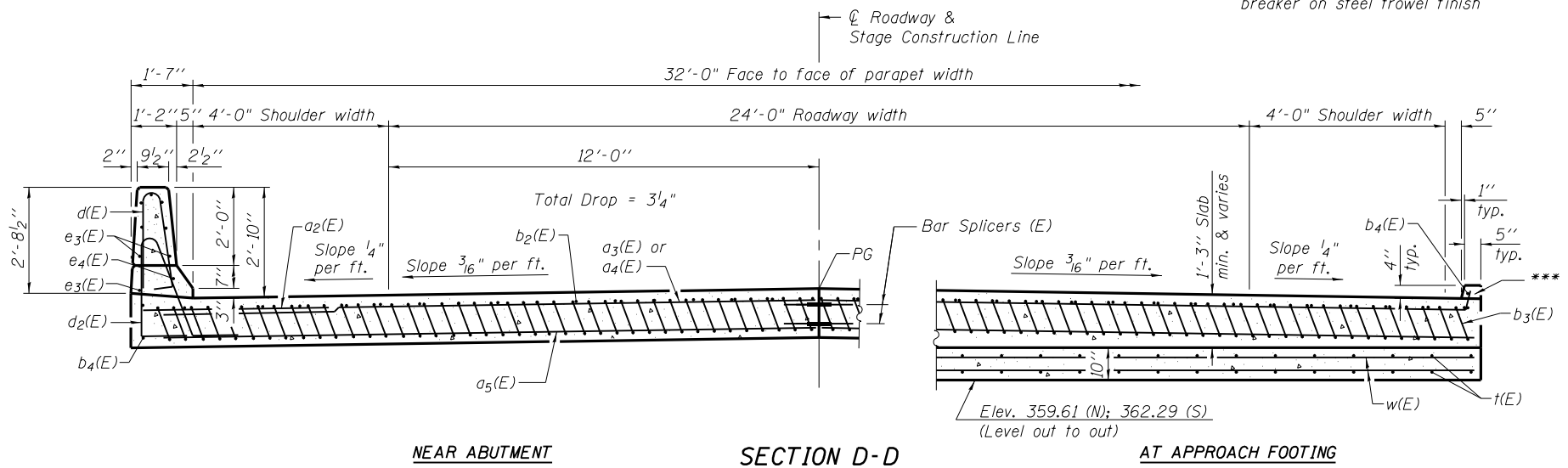


Notes:
 See sheet 12 of 20 for Detail A and View B-B.
 Approach slab and parapet concrete shall be paid for as Concrete Superstructure.
 Approach footing concrete shall be paid for as Concrete Structures.
 Reinforcement shall be paid for as Reinforcement Bars, Epoxy Coated.
 For v(E) bar details, see sheet 10 of 20.
 The approach footing maximum applied service bearing pressure (Q_{max}) = 2.0 ksf.
 For bar splicer details, see sheet 19 of 20.
 Threaded couplers for Bar Splicer Assembly shall be installed in Stage I Construction.
 Cost of excavation for approach footing included with Concrete Structures.
 For Porous Granular Embankment Special and drainage treatment details, see sheet 2 of 20.
 For additional parapet details, see sheet 10 of 20.



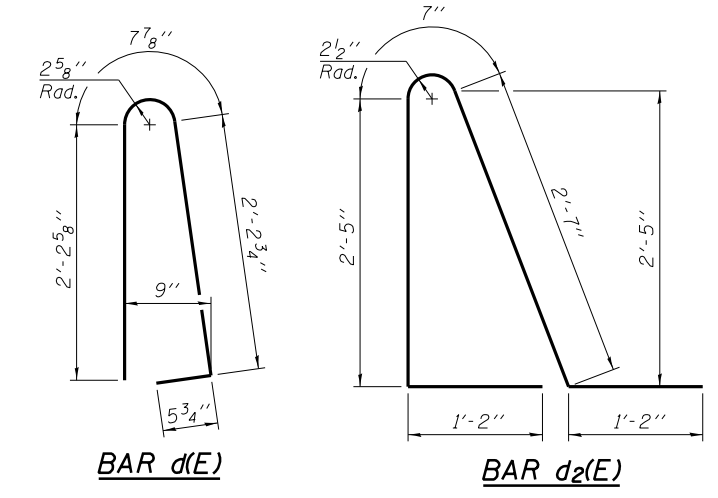
SECTION C-C



NEAR ABUTMENT

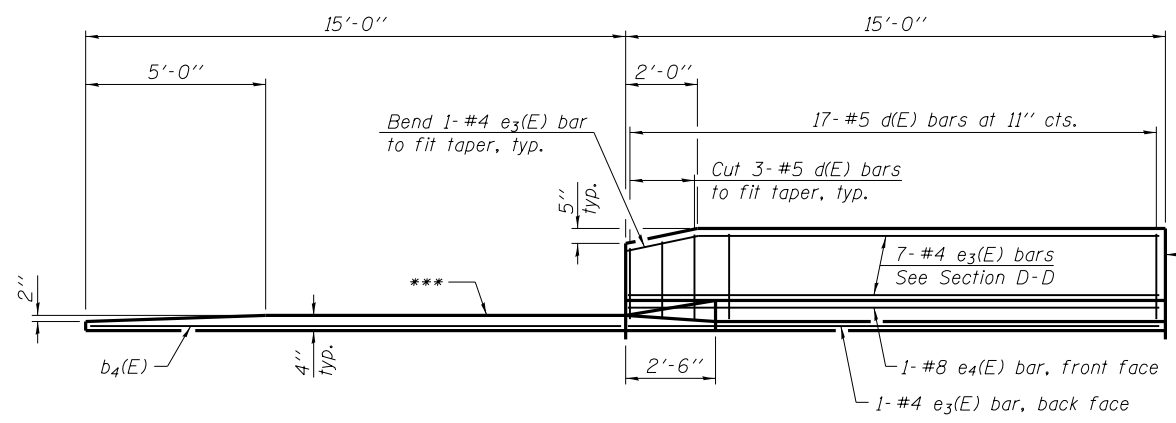
SECTION D-D

AT APPROACH FOOTING

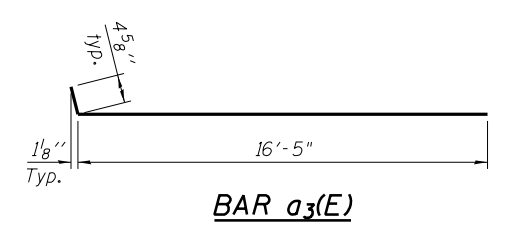


BAR d(E)

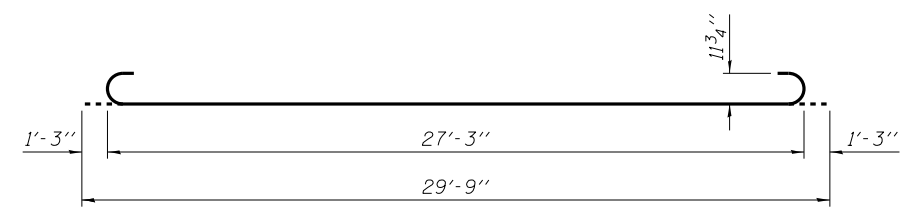
BAR d2(E)



VIEW E-E



BAR a3(E)



BAR b3(E)

* Tilt #9 b3(E) bars as required to maintain clearance.
 ** Cost included with Concrete Superstructure.
 *** Omit curb each side, N. Apr. only

**TWO APPROACHES
 BILL OF MATERIAL**

Bar	No.	Size	Length	Shape
a2(E)	48	#6	6'-6"	—
a3(E)	50	#4	16'-10"	—
a4(E)	50	#4	16'-5"	—
a5(E)	184	#5	16'-5"	—
b2(E)	56	#4	29'-8"	—
b3(E)	160	#9	29'-9"	—
b4(E)	6	#4	14'-8"	—
d(E)	68	#5	5'-7"	—
d2(E)	68	#5	7'-11"	—
e3(E)	32	#4	14'-8"	—
e4(E)	4	#8	14'-8"	—
t(E)	136	#4	9'-8"	—
w(E)	160	#5	16'-7"	—
Concrete Superstructure			Cu. Yd.	105.7
Concrete Structures			Cu. Yd.	20.8
Reinforcement Bars, Epoxy Coated			Pound	26840
Bar Splicers			Cu. Yd.	222

**** 23,190 (Superstructure)
 3650 (Substructure)

Coombes-Bloxdorf P.C.
 - CIVIL ENGINEERS -
 - STRUCTURAL ENGINEERS -
 - LAND SURVEYORS -
 Design Firm License No. 184-002703