

# GENERAL NOTES

Reinforcement bars designated (E) shall be epoxy coated.

Plan dimensions and details relative to the existing plans are subject to nominal construction variations. The contractor shall field verify existing dimensions and details affecting new construction and make necessary approved adjustments prior to construction or ordering of materials. Such variations shall not be cause for additional compensation for a change in scope of the work, however, the contractor will be paid for the quantity actually furnished at the unit price bid for the work.

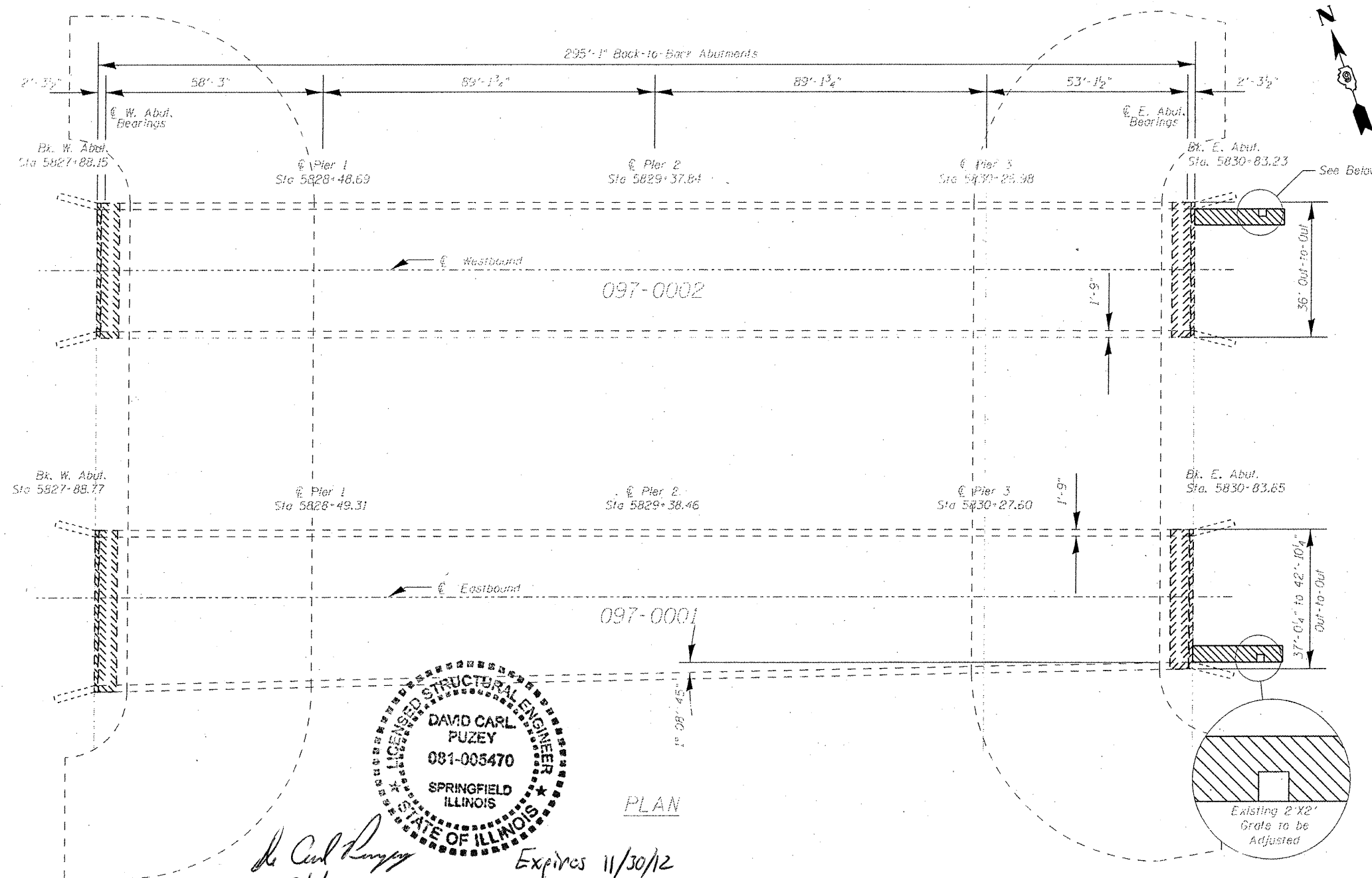
Existing reinforcement bars extending into the removal area shall be cleaned, straightened, and incorporated into the new construction. Any reinforcement bars that are damaged during concrete removal shall be replaced with an approved bar splicer or anchorage system. Cost included with concrete removal.

Joint openings shall be adjusted according to Article 520.04 of the standard specs when the deck is poured at an ambient temperature other than 50°F.

Limits of Concrete Removal

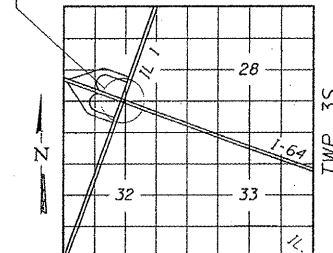
Limits of HMA Surface Course to be used on shoulders.  
2' X 23' X 5' (typ.)

ELEVATION



## STRUCTURE LOCATION

RANGE 14W - 2ND. PM



## DESIGN STRESSES

NEW CONSTRUCTION  
FIELD UNITS

$f'_c = 3,500$  psi  
 $f_y = 60,000$  psi (Reinforcement)

ORIGINAL CONSTRUCTION  
FIELD UNITS

$f'_c = 1,400$  psi (without earth pressure)  
 $f'_c = 1,000$  psi (with earth pressure)  
 $f_s = 20,000$  psi (ASTM A36)  
 $f_s = 20,000$  psi (Intermediate & Hard Grade)  
 $f'_c = 3,500$  psi  
 $v = 90$  psi (Longitudinal Bars Anchored)  
 $v = 75$  psi (Pier Footings)  
 $N = 10$  (Modular Ratio)  
Loading HS 20-44 & All.

## LOCATION SKETCH

## TOTAL BILL OF MATERIAL

ITEM	UNIT	QUANTITY
Bituminous Materials (Prime Coat)	Gal	2
HMA Surface Course, Mix "C", N90	Ton	3
Concrete Superstructure	Cu Yd	35.5
Concrete Removal	Cu Yd	32.7
Stud Shear Connectors	Each	390
Reinforcement Bars, Epoxy Coated	Pound	5040
Bar Splicers	Each	80
Preformed Joint Strip Seal	Foot	152
Frames and Grates to be Adjusted	Each	2
Floor Drain Extension	Each	32
Plug Existing Deck Drains	Each	40
Structural Repair of Concrete (Depth $\leq 5$ Inches)	Sq Ft	185

FAI 64 (I-64) OVER IL 1 & ABANDONED RR

USER NAME: S15ERS	DESIGNED: AHA	REVISED: -
PLD SCALE: 100.0000' / in.	DRAWN: ADY	REVISED: -
PLD DATE: 2/3/2012	CHECKED: -	REVISED: -
	DATE: -	REVISED: -

STATE OF ILLINOIS  
DEPARTMENT OF TRANSPORTATION

PLAN AND ELEVATION  
SN 097-0001 (EB) & SN 097-0002 (WB)

SCALE: SHEET NO. OF SHEETS STA. TO STA.

F.A.I. RTE.	SECTION	COUNTY	TOTAL SHEETS	SHEET NO.
64	D9 CM BRIDGE REP 2012-4	WHITE	13	5
CONTRACT NO. 78254				
ILLINOIS FED. AID PROJECT				