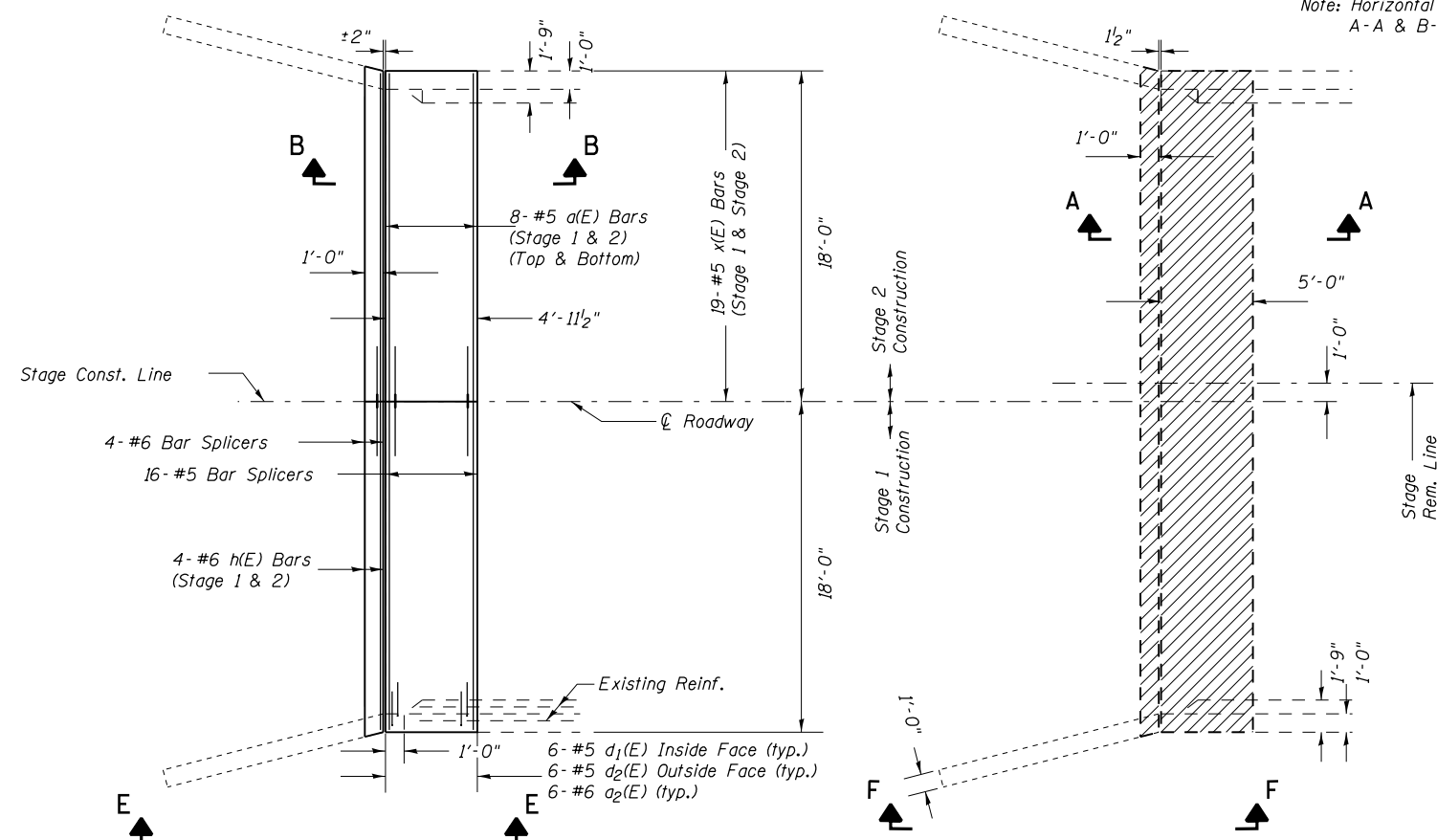
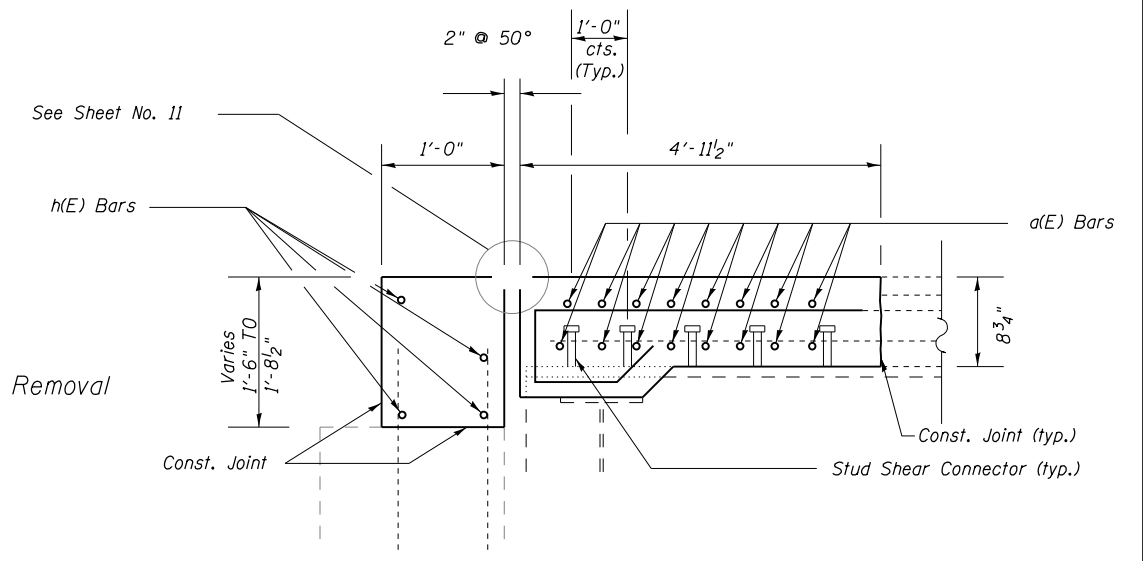


Note: Horizontal dimensions in sections A-A & B-B are at right angles.



**JOINT @ WEST ABUTMENT PLAN  
SHOWING NEW CONCRETE  
(EAST ABUTMENT SIMILAR)**

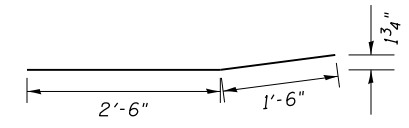
**JOINT @ WEST ABUTMENT PLAN  
SHOWING CONCRETE REMOVAL  
(EAST ABUTMENT SIMILAR)**



**SECTION B-B**

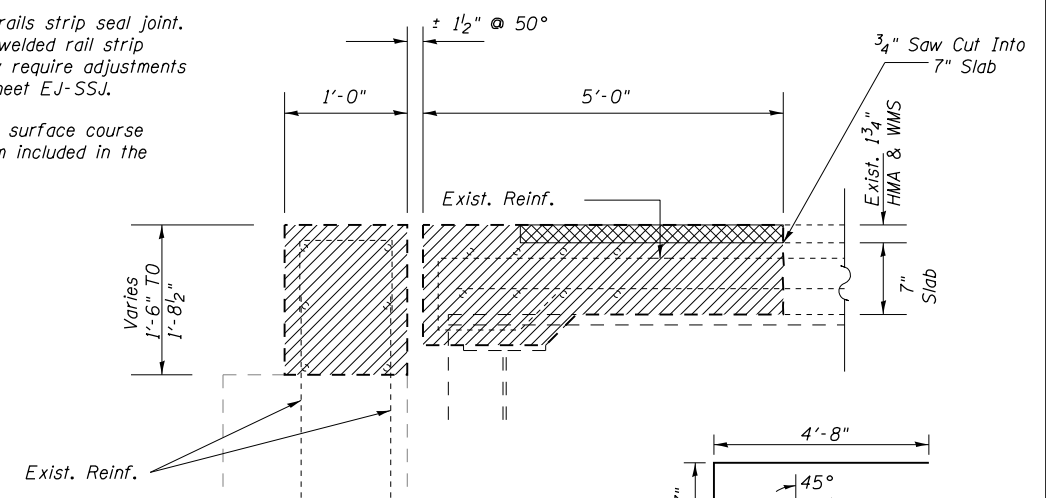
Dimensions are based on a rolled rails strip seal joint. If the contractor elects to use welded rail strip seal joint, Deck dimensions may require adjustments to satisfy the details on base sheet EJ-SSJ.

Cost of removing the existing HMA surface course and waterproof membrane system included in the cost of CONCRETE REMOVAL.

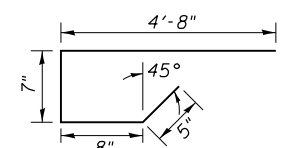


**Bar a2(E)**

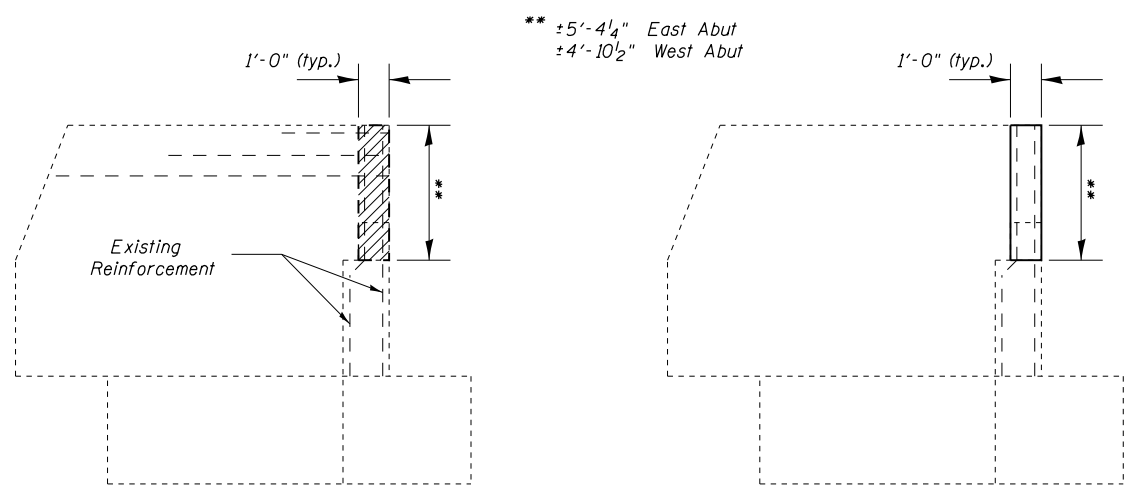
d4(E) bars shall be installed 9" into the bottom parapet before the concrete pour.



**SECTION A-A**

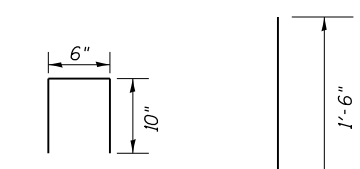


**BAR x(E)**

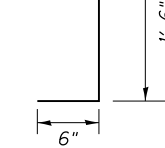


**VIEW E-E  
SHOWING CONCRETE  
REMOVAL**

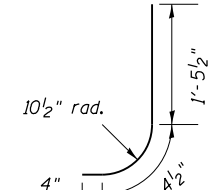
**VIEW F-F  
SHOWING CONCRETE  
SUPERSTRUCTURES**



**Bar d3(E)**

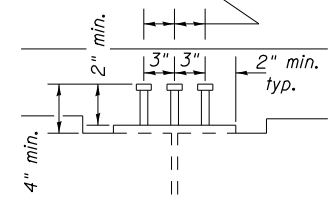


**Bar d4(E)**

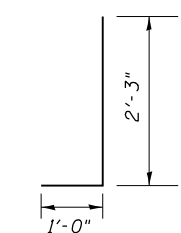


**Bar d1(E)**

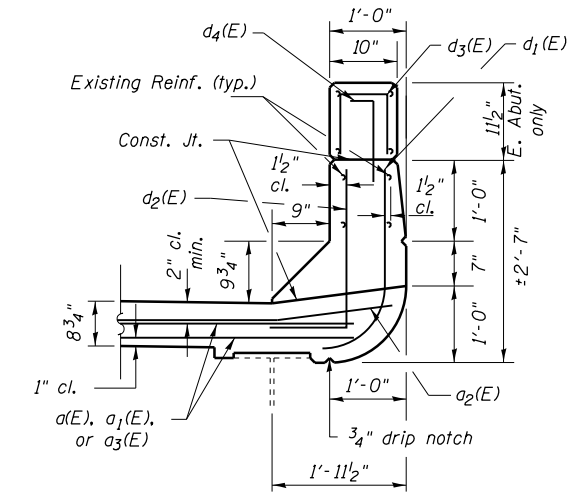
3/4" φ Granular or solid flux filled headed studs, automatically end welded to flange (No. Req'd = 180)



**STUD SHEAR  
CONNECTORS**



**Bar d2(E)**



**SECTION THROUGH  
PARAPET**

**BILL OF MATERIAL**

097-0002				
BAR	NO.	SIZE	LENGTH	SHAPE
a (E)	64	5	17'-4"	—
a2(E)	24	6	4'-0"	—
d1(E)	24	5	3'-2"	J
d2(E)	24	5	3'-3"	J
d3(E)	10	4	2'-2"	—
d4(E)	12	5	2'-0"	—
h (E)	16	6	16'-8"	—
x (E)	76	5	6'-4"	—
CONCRETE SUPERSTRUCTURE			CU YD	17.2
CONCRETE REMOVAL			CU YD	15.8
REINFORCEMENT BARS EPOXY COATED			POUND	2410

FILE NAME = g:\p\work\h\p\p\over\surfm\0253211\78254\_joints-ep-sh.dgn

USER NAME = \$USER*	DESIGNED -	REVISED -
PLOT SCALE = 9.0000' / in.	DRAWN -	REVISED -
PLOT DATE = 2/3/2012	CHECKED -	REVISED -
	DATE -	REVISED -

**STATE OF ILLINOIS  
DEPARTMENT OF TRANSPORTATION**

**JOINT REPLACEMENT DETAILS  
SN 097-0002 (WB)**

SCALE: SHEET NO. OF SHEETS STA. TO STA.

F.A.I. RTE.	SECTION	COUNTY	TOTAL SHEETS	SHEET NO.
64	D9 CM BRIDGE REP 2012-4	WHITE	13	9
				CONTRACT NO. 78254
ILLINOIS FED. AID PROJECT				