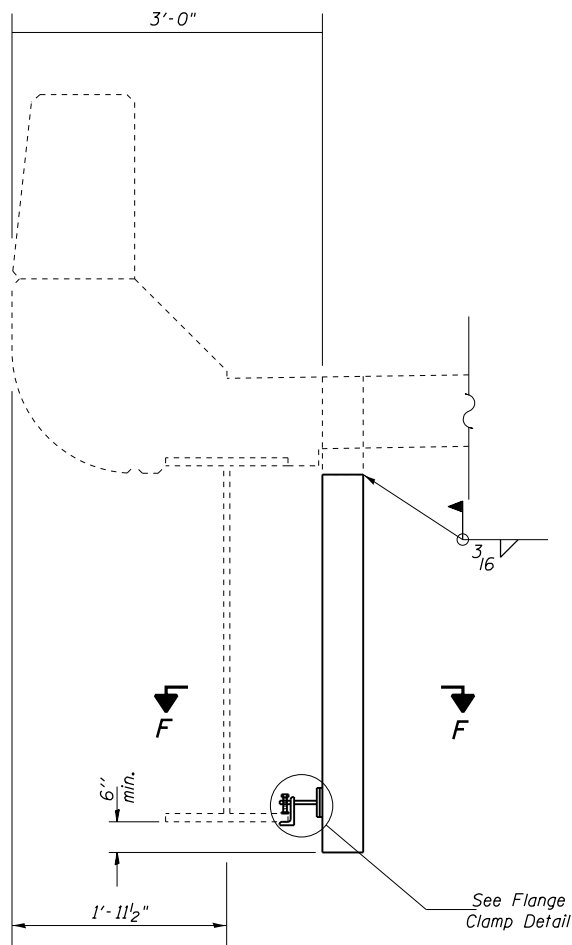


DRAIN ELIMINATION DETAIL

36 LOCATIONS

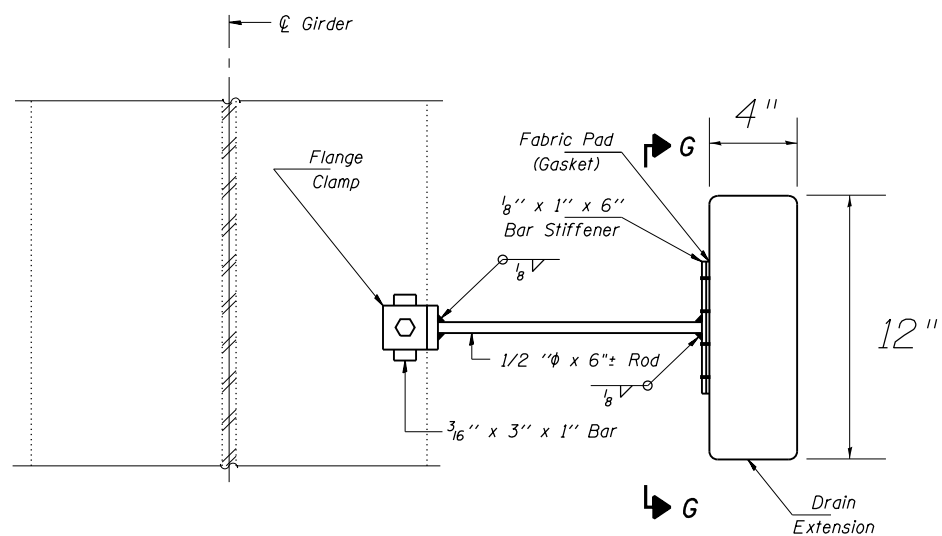
BEAM SIZES

097-0001	36 WF 135
097-0002	36 WF 135

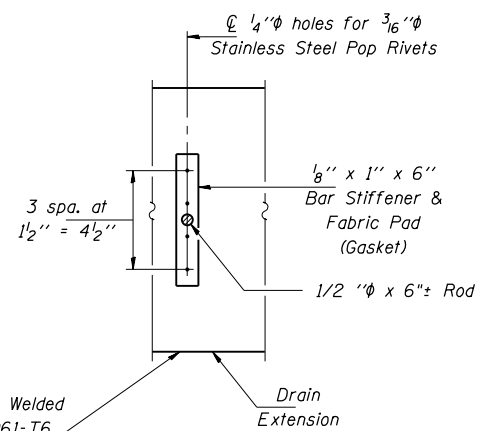


DRAIN EXTENSION DETAIL

36 LOCATIONS

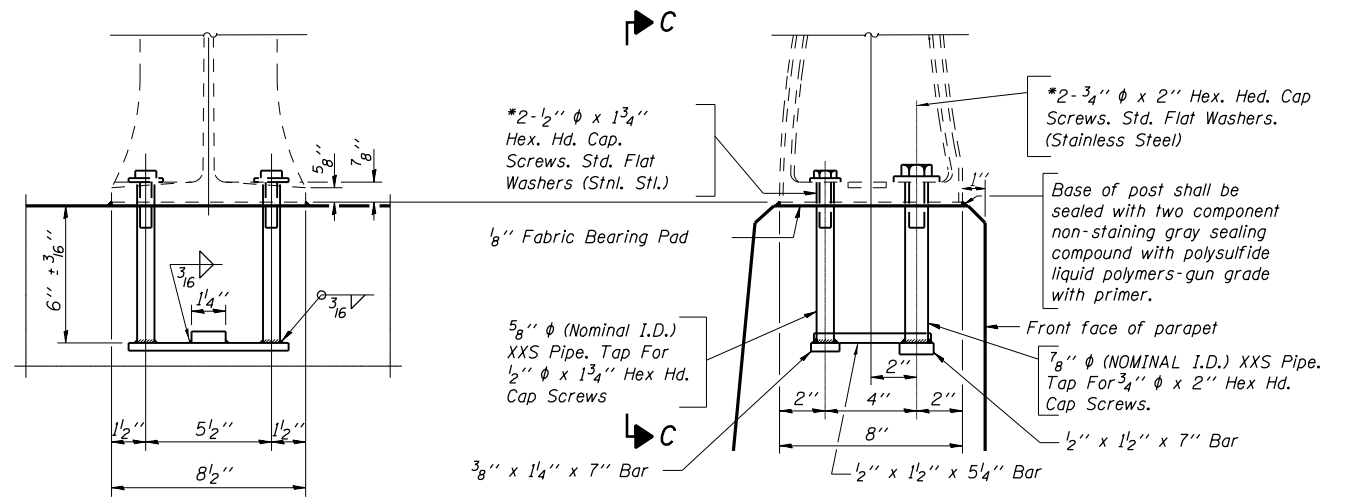


SECTION F-F



SECTION G-G

3/16" Aluminum Sheets Welded
ASTM: B209 alloy 6061-T6
or Aluminum Extrusions
ASTM: B221 alloy 6061-T6



VIEW C-C

RAIL POST DETAILS

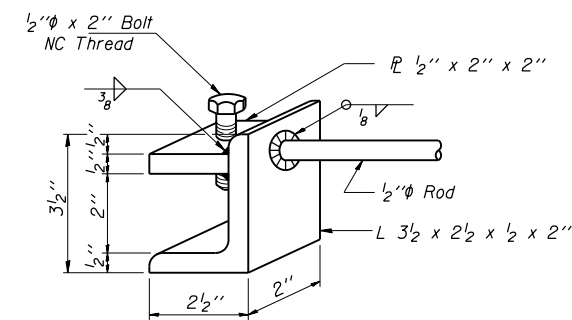
Notes:

See sheet #7 for locations of proposed deck drain extensions and eliminations. Locations shall be subject to approval by the engineer.

Removal and re-erection of the existing aluminum handrail, rail post, and all new applicable hardware, including labor and installation shall be included in the cost of concrete superstructure.

* In lieu of cast-in-place anchor device shown, the contractor has the option of drilling and setting stainless steel anchor rods of the same diameter and grade as the specified cap screws according to the article 509.06 of the standard specifications. Embedment shall be according to the manufacturer's specifications.

Post shall be normal to the parapet.



FLANGE CLAMP DETAIL

Dimensions are approximate. Similar clamps commercially available may be substituted, as approved by the Engineer.

Notes:

The exterior surfaces of the Aluminum Extensions shall be cleaned and given a washcoat pre-treatment in accordance with the SSPC's Spec. SSPC-SP1 & SSPC-Paint 27 followed by the acrylic top coat. The color shall be Light Grey, Munsell No. 10Y 7/1. See Special Provisions.

All bolts, nuts & washers shall conform to the requirements of ASTM Designation A-307 and shall be galvanized in accordance with AASHTO M-232.

FILE NAME = c:\pwworkh\pwworkh\over-turf\mcb0253211\78254_joints-rep-sht.dgn

USER NAME = \$USER\$	DESIGNED -	REVISED -
	DRAWN -	REVISED -
PLOT SCALE = 100.0000' / 11.	CHECKED -	REVISED -
PLOT DATE = 2/3/2012	DATE -	REVISED -

**STATE OF ILLINOIS
DEPARTMENT OF TRANSPORTATION**

DRAIN & RAILING DETAILS

SCALE: SHEET NO. OF SHEETS STA. TO STA.

F.A.I. RTE.	SECTION	COUNTY	TOTAL SHEETS	SHEET NO.
64	D9 CM BRIDGE REP 2012-4	WHITE	13	10
ILLINOIS FED. AID PROJECT			CONTRACT NO. 78254	