

04-27-12 LETTING ITEM 121

FOR INDEX OF SHEETS, SEE SHEET NO. 3

ADT (2011)
 PV= 4014
 MU= 92
 SU= 179
 TRUCKS= 6.75%

EQUATION STATION:

EQ. STA 752+84.9 (BK) = STA 752+85.1 (AH)
 EQ. STA 812+27.96 (BK) = STA 812+28.7 (AH)
 EQ. STA 867+23.3 (BK) = STA 867+23.5 (AH)
 EQ. STA 914+09.1 (BK) = STA 914+16.4 (AH)
 EQ. STA 924+33.7 (BK) = STA 924+46.4 (AH)
 EQ. STA 925+56.1 (BK) = STA 14+00 (AH)
 EQ. STA 37+28.9 (BK) = STA 37+29.4 (AH)
 EQ. STA 76+40.9 (BK) = STA 76+57.2 (AH)
 EQ. STA 124+79.7 (BK) = STA 128+91.9 (AH)
 EQ. STA 138+98.5 (BK) = STA 132+97.2 (AH)

OMISSIONS:

STA 888+53 TO STA 889+15

STATE OF ILLINOIS
 DEPARTMENT OF TRANSPORTATION
 DIVISION OF HIGHWAYS

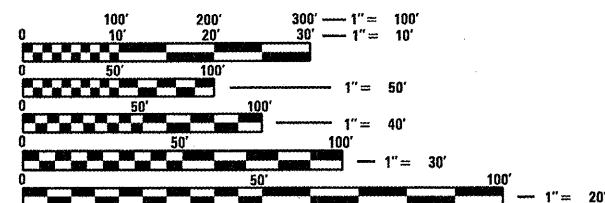
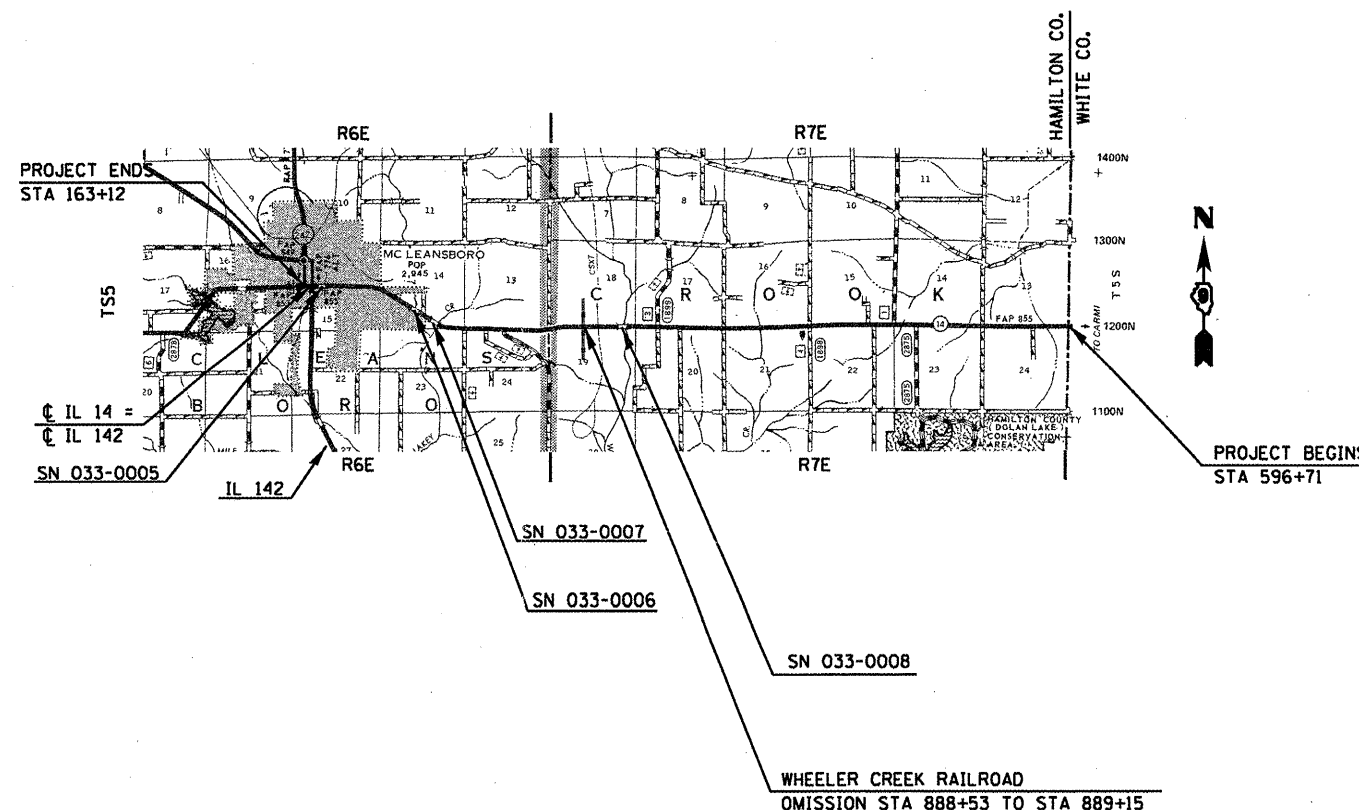
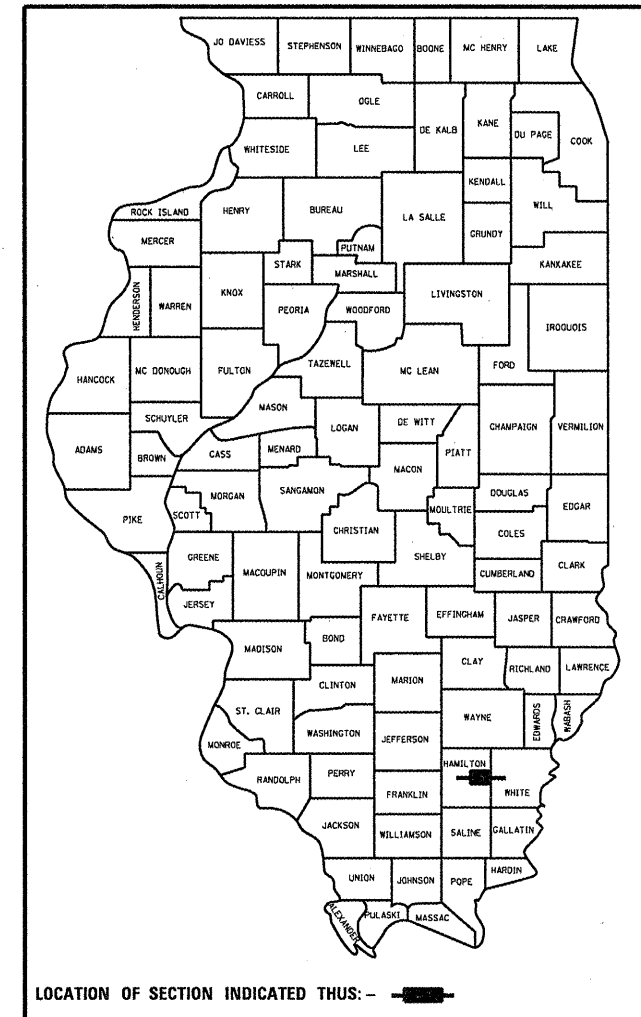
**PROPOSED
 HIGHWAY PLANS**

IL ROUTE FAP 855 (IL 14)
 SECTION (9,10)RS-2
 PROJECT ACF-0855(006)
 TYPE of IMPROVEMENT: 3P RESURFACING
 HAMILTON COUNTY

C-99-059-11

F.A.P. RTE.	SECTION	COUNTY	TOTAL SHEETS	SHEET NO.
855	(9,10)RS-2	HAMILTON	30	1
		ILLINOIS	CONTRACT NO. 78271	

D-99-048-11



FULL SIZE PLANS HAVE BEEN PREPARED USING STANDARD ENGINEERING SCALES. REDUCED SIZED PLANS WILL NOT CONFORM TO STANDARD SCALES. IN MAKING MEASUREMENTS ON REDUCED PLANS, THE ABOVE SCALES MAY BE USED.

J.U.L.I.E.
 JOINT UTILITY LOCATION INFORMATION FOR EXCAVATION
 1-800-892-0123
 OR 811

PROJECT ENGINEER: JULIO S. AYBAR
 PROJECT MANAGER: CHARLES STEIN

CONTRACT NO. 78271

GROSS LENGTH = 47,945 FT. = 9.08 MILE
 OMISSION LENGTH = 62 FT = 0.01 MILE
 NET LENGTH = 47,883 FT. = 9.07 MILE

STATE OF ILLINOIS
 DEPARTMENT OF TRANSPORTATION
 DIVISION OF HIGHWAYS

SUBMITTED Feb 2 2012

Omer Asmussen
 DEPUTY DIRECTOR OF HIGHWAYS, REGION ENGINEER

March 23 2012
John D. Baranzelli, P.E.
 acting ENGINEER OF DESIGN AND ENVIRONMENT

March 23 2012
William R. Fleury
 acting DIRECTOR OF HIGHWAYS, CHIEF ENGINEER

**PRINTED BY THE AUTHORITY
 OF THE STATE OF ILLINOIS**

INDEX OF SHEETS

SHEET NO.	DESCRIPTION
1	COVER SHEET
2	SIGNATURE SHEET
3	INDEX OF SHEETS, HIGHWAY STANDARDS, GENERAL NOTES
4	MIXTURE REQUIREMENTS / STRUCTURE INFORMATION SCHEDULE
5-6	SUMMARY OF QUANTITIES
7-9	TYPICAL SECTIONS
10-11	RESURFACING SCHEDULE
12-14	PAVEMENT MARKING SCHEDULE
15-16	PATCHING SURVEY
17-23	PLAN LAYOUT FOR FAP 855 (IL 14) STA 596+71 TO STA 163+12
24	DETAIL: HMA SURFACE REMOVAL - BUTT JOINT, SAFETY EDGE, BRIDGE JOINT DETAIL
25	DETAIL: SIDE ROADS
26	DETAIL: PAVEMENT TRANSITION
27	STANDARD DETAILS: TEMP HOT-MIX ASPHALT TRANSITIONS
28-30	STANDARD DETAILS: ROUGH GROOVED SURFACE SIGN; UNEVEN LANES

HIGHWAY STANDARDS

442201-03	701306-03
701001-02	701311-03
701006-03	701336-06
701011-02	701901-02
701201-04	780001-03
701301-04	781001-03

GENERAL NOTES

THE THICKNESS OF BITUMINOUS MIXTURE SHOWN ON THE PLANS IS THE NOMINAL THICKNESS. DEVIATIONS FROM THE NOMINAL THICKNESS WILL BE PERMITTED WHEN SUCH DEVIATION OCCURS DUE TO IRREGULARITIES IN THE EXISTING SURFACE OR BASE ON WHICH THE BITUMINOUS MIXTURE IS PLACED.

FACTORS USED FOR ESTIMATING PLAN QUANTITIES ARE AS FOLLOWS AND SHALL NOT BE USED FOR THE BASIS OF FINAL QUANTITIES EXCEPT FOR QC/QA OF BITUMINOUS MIXTURES:

ALL HOT-MIX ASPHALT.....2.016 TONS/CU. YD.

ALL AGGREGATE.....2.05 TONS/CU. YD.

BITUMINOUS MATERIALS (PRIME COAT)

ON PAVEMENT....0.09 GALS/SQ. YD.

ON AGG. SURFACE....0.32 GALS/SQ. YD.

AGGREGATE (PRIME COAT).....0.0015 TONS/SQ. YD.

THE QUANTITY OF SHORT TERM PAVEMENT MARKING SHOWN IN THE PLANS WAS BASED ON ONE APPLICATION EACH FOR THE HMA SURFACE REMOVAL, SURFACE COURSE AND LEVELING BINDER.

PRIOR TO PLACEMENT OF THE FINAL PAVEMENT MARKINGS, THE RESIDENT ENGINEER SHALL CONTACT THE BUREAU OF OPERATIONS AND ARRANGE FOR INSPECTION AND APPROVAL OF THE PAVEMENT MARKING LAYOUT.

THE CONTRACTOR SHALL STAMP STATIONING IN THE PROPOSED BITUMINOUS MATS AT 300 FT. INTERVALS ON ALTERNATING SIDES OF THE PAVEMENT AND AS DIRECTED BY THE ENGINEER. THE STATION SYMBOL STAMPS USED SHALL BE FURNISHED BY THE CONTRACTOR. THEY SHALL BE 5 1/2 "TALL OF A DESIGN APPROVED BY THE ENGINEER AND SHALL REMAIN THE PROPERTY OF THE CONTRACTOR.

UNLESS OTHERWISE DIRECTED BY THE ENGINEER, BITUMINOUS RESURFACING SHALL BE PLACED IN A SEQUENCE THAT WILL MINIMIZE THE TIME THE CENTER -LINE EDGE IS EXPOSED TO TRAFFIC.

QUANTITIES SHOWN IN THE PLANS FOR PATCHING ARE ESTIMATES. THE ACTUAL AMOUNT OF PATCHING REQUIRED SHALL BE DETERMINED BY THE ENGINEER IN THE FIELD. THE PATCHING SURVEY DATE WAS ON 1/17/2012

THE CONTRACTOR SHALL COMPLETE ALL PATCHING PRIOR TO THE HMA SURFACE REMOVAL.

RECLAIMED ASPHALT PAVEMENT (RAP) WILL NOT BE ALLOWED FOR USE AS AGGREGATE IN AGGREGATE SHOULDERS, TYPE B.

FILE NAME =	USER NAME = #USER#	DESIGNED -	REVISED -	STATE OF ILLINOIS DEPARTMENT OF TRANSPORTATION	INDEX OF SHEETS HIGHWAY STANDARDS GENERAL NOTES	F.A.P. RTE. 855	SECTION (9,10)RS-2	COUNTY HAMILTON	TOTAL SHEETS 30	SHEET NO. 3	CONTRACT NO. 78271
c:\pwwork\puidot\kell\egkd\0271238\782	Design.dgn	DRAWN -	REVISED -								ILLINOIS FED. AID PROJECT
	PLOT SCALE = 400.0000' / in.	CHECKED -	REVISED -		SCALE:	SHEET NO.	OF	SHEETS	STA.	TO STA.	
	PLOT DATE = 2/2/2012	DATE -	REVISED -								

MIXTURE REQUIREMENTS SHALL BE PREPARED AS DIRECTED BELOW:

MAINLINE SURFACE COURSE

Location(s):	Hot-Mix Asphalt Surface Course
Mixture Use(s):	Hot-Mix Asphalt Surface Course, Mix C, N90
AC/PG:	PG64-22
RAP % (Max):	10
Design Air Voids:	4.0 %, 90 Gyration Design
Mixture Composition: (Gradation Mixture)	IL-9.5 mm or IL12.5 mm
Friction Aggregate:	C Surface

MAINLINE LEVELING BINDER

Location(s):	Hot-Mix Asphalt Leveling Binder
Mixture Use(s):	Polymerized Hot-Mix Asphalt Binder Course, N50, IL-4.75
AC/PG:	SBS PG76-22
RAP % (Max):	0
Design Air Voids:	4.0 %, 50 Gyration Design
Mixture Composition: (Gradation Mixture)	IL-4.75 mm
Friction Aggregate:	None

PATCHING SPECS

Location(s):	Class D Patching
Mixture Use(s):	Hot-Mix Asphalt Binder Course, N90, IL-19.0
AC/PG:	PG64-22
RAP % (Max):	10
Design Air Voids:	4.0 %, 90 Gyration Design
Mixture Composition: (Gradation Mixture)	IL-19.0
Friction Aggregate:	None

STRUCTURE INFORMATION SCHEDULE:

BRIDGES (HAMILTON CO.):

STRUCTURE NO.	STATION	INV. RATING	OPR. RATING	SUFF. RATING
SN 033-0005	41+82.16	14.5	24.1	60.7
SN 033-0006	87+91	20.7	34.4	69.5
SN 033-0007	77+55	12.0	20.0	20.4
SN 033-0008	870+00	29.7	49.7	75.2

CULVERTS (HAMILTON CO.):

STRUCTURE NO.	CELL WIDTH	FILL DEPTH	COND. RATING	SUFF. RATING
033-7005	8	1	6	99.4
033-7006	6	2	7	99.4
033-7007	6	1.5	8	99.6
033-7009	12	1.2	3	40.5
033-7010	6	1.5	6	99.7
033-7012	12	1.4	3	40.1
033-7015	12.3	2.5	7	89.7

MTD ALLOWANCE:

MTD IS NOT ALLOWED ON SN 033-0005, -0007, -7009 AND -7012
 ALLOW AN EMPTIED MTD OVER SN 033-0006, -7005 AND -7015
 ALLOW A LOADED MTD OVER SN 033-0008, -7006, -7007 AND -7010

STRUCTURE DEAD LOAD APPROVAL: PENDING...

FILE NAME :	USER NAME : #USER#	DESIGNED -	REVISED -	STATE OF ILLINOIS DEPARTMENT OF TRANSPORTATION	MIXTURE REQUIREMENTS STRUCTURE INFORMATION SCHEDULE	F.A.P RTE.	SECTION	COUNTY	TOTAL SHEETS	SHEET NO.
c:\pwork\pwork\dot\kell\eghd\0271238\782	I-Design.dgn	DRAWN -	REVISED -			855	(9,10)RS-2	HAMILTON	30	4
	PLOT SCALE : 400.0000 ' / 1".	CHECKED -	REVISED -					CONTRACT NO. 78271		
	PLOT DATE : 2/2/2012	DATE -	REVISED -			SCALE:	SHEET NO. OF SHEETS	STA. TO STA.	ILLINOIS FED. AID PROJECT	

SUMMARY OF QUANTITIES

LOCATION	RURAL-STP
ROUTE	FAS 855 (IL 14)
FUNDING	20% STATE 80% FED
COUNTY	HAMILTON
CONSTRUCTION TYPE	ROADWAY <i>COMBINE</i>
TYPE CODE	0005 0005

CODE NUMBER	ITEM DESCRIPTION	UNIT	TOTAL QUANTITY		STA 121+15 TO STA 163+12
Z0034105	MATERIAL TRANSFER DEVICE	TON	18,720	16,565	2,155
40600115	POLYMERIZED BITUMINOUS MATERIALS (PRIME COAT)	GALLON	13,927	12,381	1,546
40600300	AGGREGATE (PRIME COAT)	TON	226	200	26
40600827	POLYMERIZED LEVELING BINDER (MACHINE METHOD), IL*4.75, N50	TON	6,277	5,554	723
40600982	HOT-MIX ASPHALT SURFACE REMOVAL • BUTT JOINT	SQ YD	45	45	
40600990	TEMPORARY RAMP	SQ YD	68	45	23
40603320	HOT-MIX ASPHALT SURFACE COURSE, MIX "C", N90	TON	12,443	11,011	1,432
40800050	INCIDENTAL HMA SURFACING	TON	383	383	
44000158	HOT-MIX ASPHALT SURFACE REMOVAL 2 1/4"	SQ YD	14,583		14,583
44000151	HOT-MIX ASPHALT SURFACE REMOVAL 1/2"	SQ YD	132,944	130,500	2,444
44200168	PAVEMENT PATCHING, TYPE II, 14 INCH	SQ YD	1,902	1,791	111
44200172	PAVEMENT PATCHING, TYPE III, 14 INCH	SQ YD	86	70	16
48102100	AGGREGATE WEDGE SHOULDERS, TYPE B	TON	2,521	2,477	44
67000500	ENGINEER'S FIELD OFFICE, TYPE B	CAL MO	3	3	

SUMMARY OF QUANTITIES

LOCATION	RURAL-STP	
ROUTE	FAS 855 (IL 14)	
FUNDING	20% STATE 80% FED	
COUNTY	HAMILTON	
CONSTRUCTION TYPE	ROADWAY	
TYPE CODE	0005	0005

CODE NUMBER	ITEM DESCRIPTION	UNIT	TOTAL QUANTITY		STA 121+15 TO STA 163+12
67100100	MOBILIZATION	L SUM	1	0.75	0.25
70100600	TRAFFIC CONTROL AND PROTECTION, STANDARD 701336	L SUM	1	0.75	0.25
70100460	TRAFFIC CONTROL AND PROTECTION, STANDARD 701306	L SUM	1	0.75	0.25
70106800	CHANGEABLE MESSAGE SIGN	CAL MO	1	1	
70300100	SHORT- TERM PAVEMENT MARKING	FOOT	13,932	13,178	754
70300210	TEMPORARY PAVEMENT MARKING LETTERS AND SYMBOLS	SO FT	122	122	
70300220	TEMPORARY PAVEMENT MARKING, LINE 4"	FOOT	131,446	127,949	3,497
70300240	TEMPORARY PAVEMENT MARKING • LINE 6"	FOOT	84		84
70300280	TEMPORARY PAVEMENT MARKING • LINE 24"	FOOT	156	72	84
70301000	WORK ZONE PAVEMENT MARKING REMOVAL	SO FT	44,051	42,843	1,208
* 78000100	THERMOPLASTIC PAVEMENT MARKING • LETTERS AND SYMBOLS	SO FT	122	122	
* 78001110	PAINT PAVEMENT MARKING • LINE 4"	FOOT	134,461	127,949	6,512
* 78001130	PAINT PAVEMENT MARKING • LINE 6"	FOOT	84		84
* 78000650	THERMOPLASTIC PAVEMENT MARKING • LINE 24"	FOOT	156	72	84
* 78100100	RAISED REFLECTIVE PAVEMENT MARKER	EACH	604	549	55
78300200	RAISED REFLECTIVE PAVEMENT MARKER REMOVAL	EACH	405	363	42

* SPECIALTY ITEM

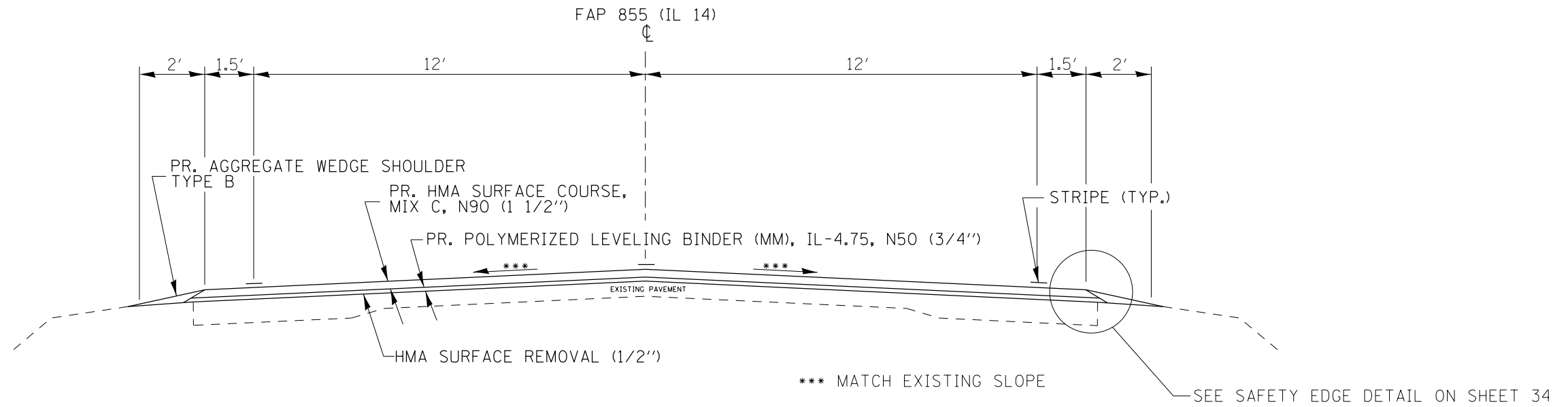
FILE NAME =	USER NAME = #USER#	DESIGNED -	REVISED -
ei:\pw\work\puidot\kellgk\d0271238\7827	Design.dgn	DRAWN -	REVISED -
	PLOT SCALE = 400.0000' / in.	CHECKED -	REVISED -
	PLOT DATE = 2/2/2012	DATE -	REVISED -

STATE OF ILLINOIS
DEPARTMENT OF TRANSPORTATION

SUMMARY OF QUANTITIES

SCALE: SHEET NO. 2 OF 2 SHEETS STA. TO STA.

F.A.P. RTE.	SECTION	COUNTY	TOTAL SHEETS	SHEET NO.
855	(9,10)RS-2	HAMILTON	30	6
CONTRACT NO. 78271			ILLINOIS FED. AID PROJECT	



TO BE USED:

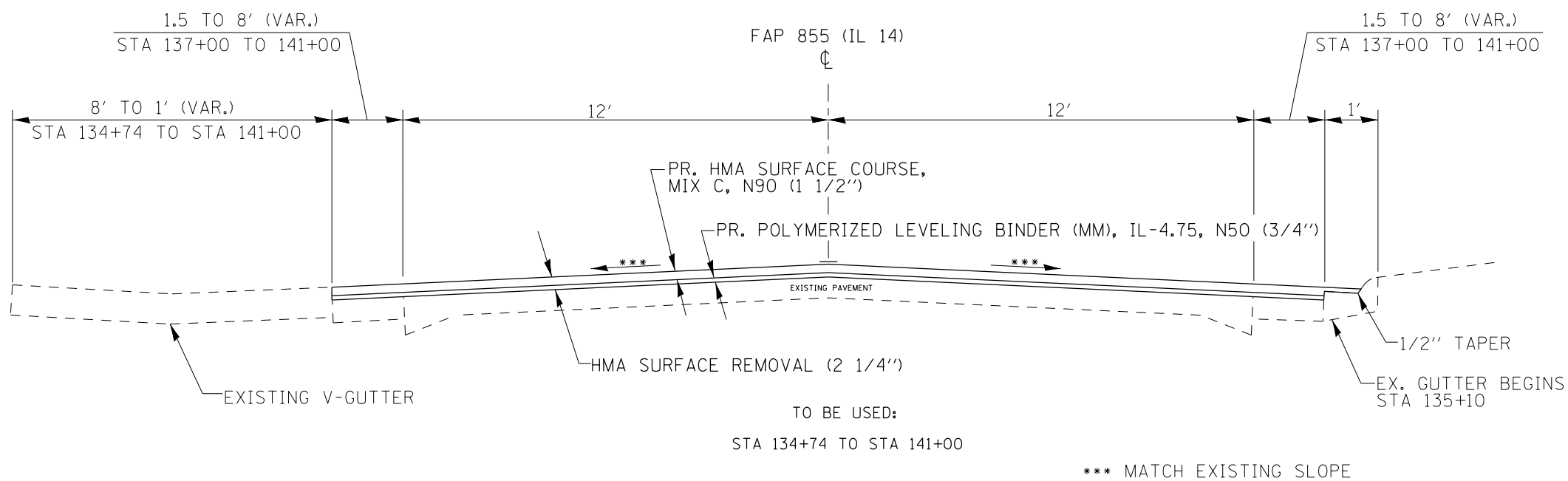
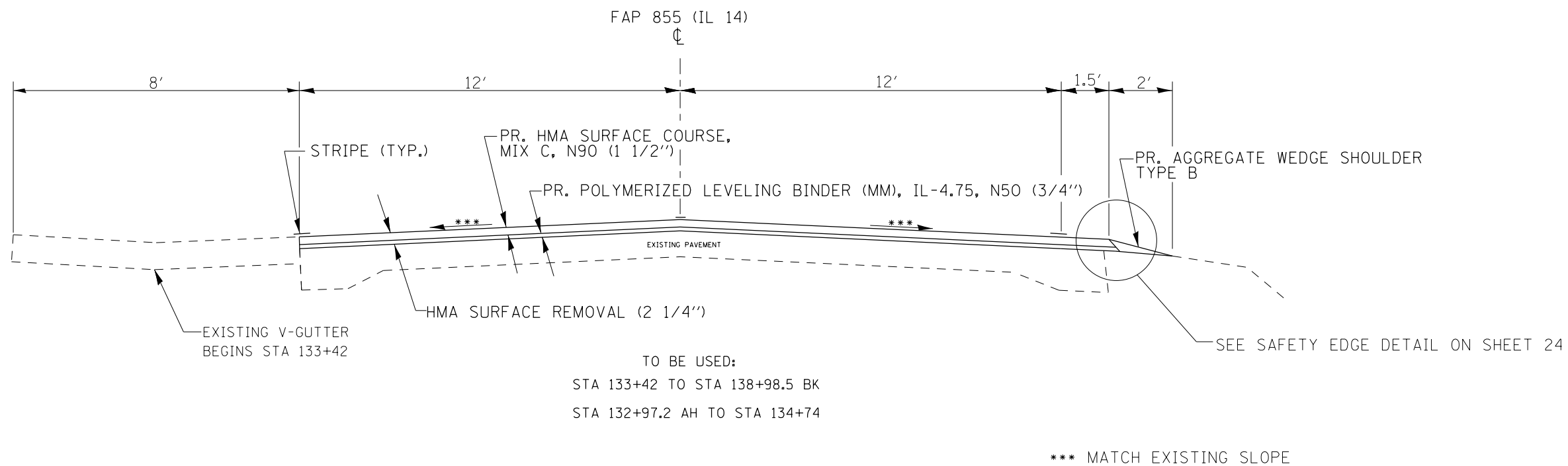
- STA 596+71 TO STA 752+84.9
- STA 752+85.1 TO STA 812+27.96
- STA 812+28.7 TO STA 867+23.3
- STA 867+23.5 TO STA 914+09.1
- STA 914+16.4 TO STA 924+33.7
- STA 924+46.4 TO STA 925+56.1
- STA 14+00 TO STA 37+28.9
- STA 37+27.4 TO STA 76+40.9
- STA 76+57.2 TO STA 124+79.7
- STA 128+91.9 TO STA 133+42

FILE NAME =	USER NAME = \$USER*	DESIGNED -	REVISED -
et:\pwork\pwork\kellykd\0271238\78271-Design.dgn		DRAWN -	REVISED -
	PLOT SCALE = 400.0000' / in.	CHECKED -	REVISED -
	PLOT DATE = 2/1/2012	DATE -	REVISED -

STATE OF ILLINOIS
DEPARTMENT OF TRANSPORTATION

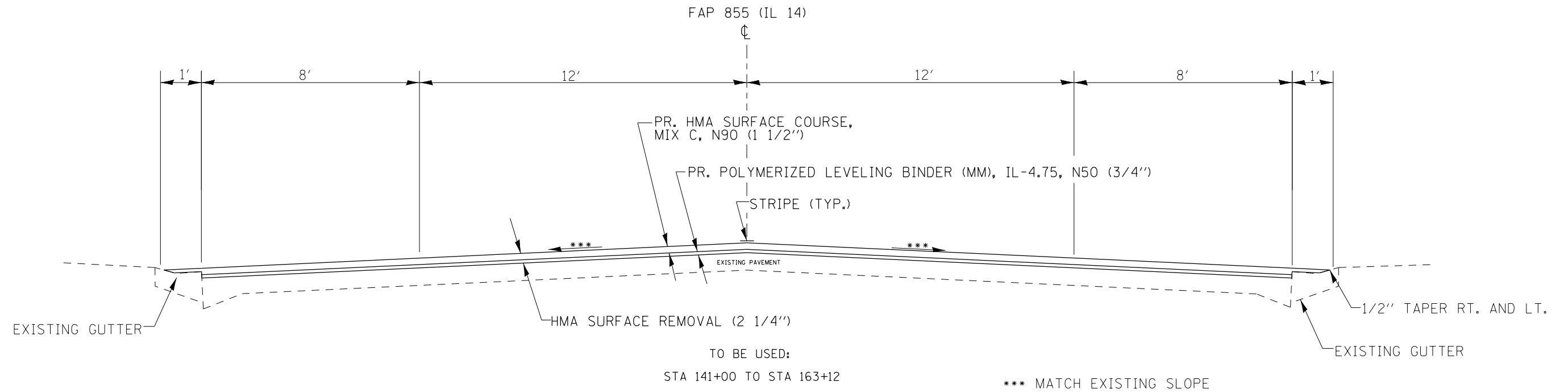
TYPICAL SECTIONS	
SCALE:	SHEET NO. 1 OF 3 SHEETS
STA.	TO STA.

F.A.P. RTE.	SECTION	COUNTY	TOTAL SHEETS	SHEET NO.
855	(9,10RS-2	HAMILTON	30	7
CONTRACT NO. 78271			ILLINOIS FED. AID PROJECT	



NOTE: HMA REMOVAL IN GUTTER AREAS SHALL BE INCLUDED IN HMA SURFACE REMOVAL, 2 1/4"

FILE NAME =	USER NAME = \$USER*	DESIGNED -	REVISED -	STATE OF ILLINOIS DEPARTMENT OF TRANSPORTATION	TYPICAL SECTIONS			F.A.P. RTE.	SECTION	COUNTY	TOTAL SHEETS	SHEET NO.	
et:\pwork\pwork\kellykd\0271238\78271-Design.dgn		DRAWN -	REVISED -		SCALE:	SHEET NO. 2 OF 3 SHEETS	STA.	TO STA.	855	(9,10RS-2	HAMILTON	30	8
		CHECKED -	REVISED -		CONTRACT NO. 78271								
		DATE -	REVISED -		ILLINOIS FED. AID PROJECT								



NOTE: HMA REMOVAL IN GUTTER AREAS SHALL BE INCLUDED IN HMA SURFACE REMOVAL, 2 1/4''

FILE NAME =	USER NAME = \$USER*	DESIGNED -	REVISED -	STATE OF ILLINOIS DEPARTMENT OF TRANSPORTATION	TYPICAL SECTIONS			F.A.P. RTE.	SECTION	COUNTY	TOTAL SHEETS	SHEET NO.
		DRAWN -	REVISED -			855	(9,10)RS-2	HAMILTON	30	9		
	PLOT SCALE = 400.0000' / in.	CHECKED -	REVISED -			CONTRACT NO. 78271			ILLINOIS FED. AID PROJECT			
	PLOT DATE = 2/1/2012	DATE -	REVISED -		SCALE:	SHEET NO. 3 OF 3 SHEETS	STA.	TO STA.				

RESURFACING SCHEDULE (HAMILTON CO.)

LOCATION	STATION TO STATION			LENGTH	ROADWAY WIDTH	ROADWAY AREA	HMA SURFACE REMOVAL (2 1/4")	HMA SURFACE REMOVAL (1/2")	TEMP RAMP	HMA SURFACE REMOVAL BUTT JT.	HMA SUR. CSE., MIX C, N 90 (1 1/2")	POLYM. HMA LEV. BINDER, NSO, IL-4.75 (3/4")	BIT. MAT. (PRIME COAT)	AGG. (PRIME COAT)	AGGREGATE SHLDRS., TY. B	INCIDENTAL HMA SURFACING	
				FOR INFORMATIONAL PURPOSE ONLY			(SQ YD)	(SQ YD)	(SQ YD)	(SQ YD)	(SQ YD)	(TON)	(TON)	(GAL)	(TON)	(TON)	(TON)
				(FT)	(FT)	(SQ YD)	(SQ YD)	(SQ YD)	(SQ YD)	(TON)	(TON)	(GAL)	(TON)	(TON)	(TON)	(TON)	
	596+71.00	TO	752+84.90	15613.9	27	46842		46842	15	15	3952	1994	4216	70	889		
EQ. STA 752+84.9 (BK) = STA 752+85.1 (AH)																	
	752+85.10	TO	812+27.96	5942.9	27.0	17829		17829			1504	759	1605	27	338		
EQ. STA 812+27.96 (BK) = STA 812+28.7 (AH)																	
	812+28.70	TO	867+23.30	5494.6	27	16483.8		16484			1391	702	1484	25	313		
EQ. STA 867+23.3 (BK) = STA 867+23.5 (AH)																	
	867+23.50	TO	888+53.00	2129.5	27.0	6389		6389			539	272	575	10	121		
RR XING	888+53.00	AND	889+15.00		27.0				30	30							
RR XING OMISSION STA 888+53 TO STA 889+15																	
	889+15.00	TO	914+09.10	2494.1	27.0	7482		7482			631	318	673	11	142		
EQ. STA 914+09.1 (BK) = STA 914+16.4 (AH)																	
	914+16.40	TO	924+33.70	1017.3	27.0	3052		3052			257	130	275	5	58		
EQ. STA 924+33.7 (BK) = STA 924+46.4 (AH)																	
	924+46.40	TO	925+56.10	109.7	27.0	329		329			28	14	30	0	6		
EQ. STA 925+56.1 (BK) = STA 14+00 (AH)																	
	14+00.00	TO	37+28.90	2328.9	27.0	6987		6987			589	297	629	10	133		
EQ. STA 37+28.9 (BK) = STA 37+29.4 (AH)																	
	37+29.40	TO	76+40.90	3911.5	27.0	11735		11735			990	499	1056	18	223		
EQ. STA 76+40.9 (BK) = STA 76+57.2 (AH)																	
	76+57.20	TO	121+15.00	4457.8	27.0	13373		13373			1128	569	1204	20	254		
HAMILTON CO. ROADWAY SHEET TOTALS				43500.2				130,500	45	45	11,011	5,554	11,745	196	2,477	0	

RESURFACING SCHEDULE (MCLEANSBORO)

LOCATION	STATION TO STATION			LENGTH	ROADWAY WIDTH	ROADWAY AREA	HMA SURFACE REMOVAL (2 1/4")	HMA SURFACE REMOVAL (1/2")	TEMP RAMP	HMA SURFACE REMOVAL BUTT JT.	HMA SUR. CSE., MIX C, N 90 (1 1/2")	POLYM. HMA LEV. BINDER, N50, IL-4.75 (3/4")	BIT. MAT. (PRIME COAT)	AGG. (PRIME COAT)	AGGREGATE SHLDRS., TY. B	HMA SURF. REM. VARIABLE DEPTH		
				FOR INFORMATIONAL PURPOSE ONLY			(FT)	(FT)	(SQ YD)	(SQ YD)	(SQ YD)	(SQ YD)	(TON)	(TON)	(GAL)	(TON)	(TON)	SOYD
					121+15.00	TO	124+79.70	364.7	27.0	1094		1094			92	47	98	2
EQ. STA 124+79.7 (BK) = STA 128+91.9 (AH)																		
LT. & RT.	128+91.90	TO	132+79.00	387.1											22			
VAR DPT	133+07.00	TO	133+42.00	35.0	27.0	105										105		
	128+91.90	TO	133+42.00	450.1	27.0	1350		1350			114	57	122	2				
	133+42.00	TO	138+98.50	556.5	26.0	1608	1,608				136	71	145	2				
RT.	132+79.00	TO	138+98.50	619.5											9			
EQ. STA 138+98.5 (BK) = STA 132+97.2 (AH)																		
RT.	132+97.20	TO	134+74.00	176.8											3			
	132+97.20	TO	137+00.00	402.8	26.0	1164	1,163.6				98	51	105	2				
WDT CHNG	137+00.00	TO	141+00.00	400.0	26-41	1,489	1,489				125	63	134	2				
	141+00.00	TO	163+12.00	2212.0	42.0	10323	10,323		23	23	867	434	929	15				
MCLEANSBORO TOTALS				4386.1			14,583	2,444	23	23	1432	723	1532	26	44	105		

SIDE ROAD SCHEDULE

LOCATION			EXIST. SURFACE	EP WIDTH	WIDTH AT 15' OFFSET	ROADWAY AREA	HMA SURF. REMOVAL-BUTT JT. (SQ YD)	INCIDENTAL HMA SURFACING (TON)	BIT. MAT. (PRIME COAT) (GAL)	AGG. (PRIME COAT) (TON)	
			FOR INFORMATIONAL PURPOSE ONLY								
			(FT)	(FT)	(FT)	(SQ YD)	(SQ YD)	(TON)	(GAL)	(TON)	
FAP 855 (IL 14)											
Hamilton County side road schedule											
Lt.	1760 E CO RD	STA 616+87	AGG.	58.0	18.0	63		11	20	0.1	
Lt.	1700 E CO RD	STA 649+60	AGG.	69.0	34.0	86		14	27	0.1	
Rt.	1700 E CO RD	STA 649+60	AGG.	76.0	38.0	95		16	30	0.1	
Lt.	1625 E CO RD	STA 689+60	OIL & CHIP	70.0	25.0	79		13	7	0.1	
Rt.	1600 E CO RD	STA 702+89	AGG.	78.0	29.0	89		15	29	0.1	
Lt.	1575 E CO RD	STA 716+16	AGG.	64.0	25.0	74		12	24	0.1	
Lt.	1500 E CO RD	STA 755+72	AGG.	70.0	29.0	83		14	26	0.1	
Rt.	1500 E CO RD	STA 755+72	AGG.	74.0	32.0	88		15	28	0.1	
Lt.	1400 E CO RD	STA 809+14.75	AGG.	73.0	33.0	88		15	28	0.1	
Rt.	1400 E CO RD	STA 809+14.75	AGG.	76.0	40.0	97		16	31	0.1	
Lt.	1350 E CO RD	STA 836+06	AGG.	74.0	27.0	84		14	27	0.1	
Lt.	1325 E CO RD	STA 849+32	AGG.	88.0	37.0	104		18	33	0.2	
Rt.	1325 E CO RD	STA 849+32	AGG.	112.0	53.0	138		23	44	0.2	
Rt.	1200 E CO RD	STA 916+60	AGG.	90.0	43.0	111		19	35	0.2	
Lt.	1150 E CO RD	STA 39+43	CONC.	218.0	104.0	268	268	23	24	0.4	
Lt.	1125 E CO RD	STA 45+75	AGG.	70.0	22.0	77		13	25	0.1	
Lt.	1100 E CO RD	STA 59+07.85	AGG.	75.0	27.0	85		14	27	0.1	
Rt.	1050 E CO RD	STA 87+54.76	OIL & CHIP	57.0	20.0	64		11	21	0.1	
Lt.	INDUSTRIAL PK. RD	STA 118+84.74	OIL & CHIP	66.0	28.0	78		13	7	0.1	
Rt.	INDUSTRIAL PK. RD	STA 118+84.75	OIL & CHIP	88.0	32.0	100		17	9	0.2	
Rt.	JOHN STELLE RD	STA 121+15	OIL & CHIP	107.0	78.0	154		26	14	0.2	
PROJECT TOTALS								268	331	517	3

ENTRANCE SCHEDULE

NUMBER	ENTRANCE TYPE	EXIST. SURFACE	EP WIDTH	WIDTH AT 4' OFFSET	ROADWAY AREA	INCIDENTAL HMA SURFACING (TON)	BIT. MAT. (PRIME COAT) (GAL)	AGG. (PRIME COAT) (TON)	AGGREGATE WEDGE SHLDRS., TY. B (TON)	
		FOR INFORMATIONAL PURPOSE ONLY								
		(FT)	(FT)	(FT)	(SQ YD)	(TON)	(GAL)	(TON)	(TON)	
Hamilton County										
45	Private Ent.	Agg.	16.0	12.0	280	27	90	0.42	14	
6	Private Ent.	Bit.	16.0	12.0	37	4	3	0.06		
2	Private Ent.	PPC	16.0	12.0	12	1	1	0.02		
2	Comm. Ent.	Agg.	39.0	35.0	33	3	11	0.05	2	
5	Comm. Ent.	Bit.	39.0	35.0	82	8	7	0.12		
5	Comm. Ent.	PPC	39.0	35.0	82	8	7	0.12		
SUBTOTALS						52	119	1	16	

Pavement Marking Hamilton

STATION TO STATION				PAINT PAVEMENT MARKING						TEMPORARY			SHORT-TERM	NOTES	
				4 INCH WHITE (EDGE LINE)	4 INCH YELLOW (NO PASS ZONE OR DBL. YELLOW)	4 INCH (SKIP-DASH)	6 INCH (CROSSWALKS EDGE LINES) WHITE	24 INCH (STOP BARS) WHITE	LETTERS AND SYMBOLS	4 INCH	24 INCH	LETTERS AND SYMBOLS	4 INCH		
				FOOT	FOOT	FOOT	FOOT	FOOT	SO FT	FOOT	FOOT	FOOT	FOOT		
DBL	596+71.0	TO	597+44.4	31227.8	147						31375			4684	NPZ
LT	597+44.4	TO	608+00.4		1,056						1056				NPZ
	597+44.4	TO	636+51.6			977					977				
RT	611+17.2	TO	616+45.2		528						528				NPZ
LT	620+67.6	TO	625+95.6		528						528				NPZ
RT	627+01.2	TO	636+51.6		950						950				NPZ
	636+51.6	TO	641+79.6		528						528				NPZ
	641+79.6	TO	668+19.6			660					660				
LT	641+79.6	TO	650+24.4		845						845				NPZ
RT	659+74.8	TO	668+19.6		845						845				NPZ
	668+19.6	TO	672+42.0		422						422				NPZ
	672+42.0	TO	689+31.6			422					422				
LT	672+42.0	TO	681+92.4		950						950				NPZ
RT	681+92.4	TO	689+31.6		739						739				NPZ
	689+31.6	TO	704+10.0		1,478						1478				NPZ
	704+10.0	TO	730+50.0			660					660				
LT	704+10.0	TO	716+77.2		1,267						1267				NPZ
RT	720+99.6	TO	730+50.0		950						950				NPZ
	730+50.0	TO	752+84.9		2,235						2235				NPZ
EO STA 752+84.9 (BK) = 752+85.1 (AH)				11,886							11886			1783	
	752+85.1	TO	764+29.4		1,144						1144				NPZ
	764+29.4	TO	808+64.6			1,109					1109				
LT	764+29.4	TO	773+79.8		950						950				NPZ
RT	798+08.6	TO	808+64.6		1,056						1056				NPZ
	808+64.6	TO	812+27.9		363						363				NPZ
EO STA 812+27.96 (BK) = 812+28.70 (AH)				10,989							10989			1648	
	812+28.7	TO	822+38.1		1,009						1009				NPZ
	822+38.1	TO	867+23.3			1,121					1121				
EO STA 867+23.3 (BK) = 867+23.5 (AH)				9,371							9371			1406	
	867+23.5	TO	884+68.7			436					436				
LT	822+38.1	TO	831+88.5		950						950				NPZ
RT	873+07.1	TO	884+68.7		1,162						1162				NPZ

Pavement Marking Hamilton

STATION TO STATION				PAINT PAVEMENT MARKING						TEMPORARY			SHORT-TERM	NOTES
				4 INCH WHITE (EDGE LINE)	4 INCH YELLOW (NO PASS ZONE OR DBL. YELLOW)	4 INCH (SKIP-DASH)	6 INCH (CROSSWALKS EDGE LINES) WHITE	24 INCH (STOP BARS) WHITE	LETTERS AND SYMBOLS	4 INCH	24 INCH	LETTERS AND SYMBOLS	4 INCH	
				FOOT	FOOT	FOOT	FOOT	FOOT	SO FT	FOOT	FOOT	FOOT	FOOT	
RR	884+51.0	TO	884+51.0					12			12			RR STOP BAR
RR	884+76.0	TO	884+76.0						7.2			7.2		RR "R' S"
RR	884+76.0	TO	884+76.0						54.0			54.0		RR "X"
RR	885+01.0	TO	885+01.0					12			12			RR STOP BAR
	888+68.0	TO	888+68.0					12			12			STOP BAR
	888+98.0	TO	888+98.0					12			12			STOP BAR
RR	892+65.0	TO	892+65.0					12			12			RR STOP BAR
RR	892+90.0	TO	892+90.0						7.2			7.2		RR "R' S"
RR	892+90.0	TO	892+90.0						54.0			54.0		RR "X"
RR	892+15.0	TO	893+15.0					12						RR STOP BAR
	884+68.7	TO	914+09.1		2,940					2940	12			NPZ
EO STA 914+09.1 (BK) = 914+16.4 (AH)				2,035						2035			305	
	914+16.4	TO	924+33.7		1,017					1017				NPZ
EO STA 924+33.7 (BK) = 924+46.4 (AH)				219						219			33	
	924+46.4	TO	925+56.1		110					110				NPZ
EO STA 925+56.1 (BK) = 14+00.0 (AH)				4,658						4658			699	
	14+00.0	TO	15+51.4		151					151				NPZ
	15+51.4	TO	37+28.9			544				544				
EO STA 37+28.9 (BK) = 37+29.4 (AH)				7,823						7823			1173	
	37+29.4	TO	61+98.3			617				617				
LT	15+51.4	TO	25+01.8		950					950				NPZ
RT	30+29.8	TO	36+63.4		634					634				NPZ
LT	38+75.1	TO	46+14.3		739					739				NPZ
RT	51+42.3	TO	61+98.3		1,056					1056				NPZ
DBL	61+98.3	TO	70+43.1		1,690					1690				NPZ
	70+43.1	TO	76+40.9			149				149				
LT	70+43.1	TO	76+40.9		598					598				NPZ
EO STA 76+40.9 (BK) = 76+57.2 (AH)				9,645						9645			1447	
LT	76+57.2	TO	79+04.2		247					247				NPZ
RT	92+77.0	TO	98+05.0		528					528				NPZ
LT	103+33.0	TO	108+61.0		528					528				NPZ
RT	109+13.8	TO	117+05.8		792					792				NPZ
LT	119+17.0	TO	121+15.0		198					198				NPZ
	76+57.2	TO	121+15.0			1,114				1114				
TOTALS				87,854	32,284	7,811		72	122	127,948	72	122	13,178	

Pavement Marking McLeansboro

STATION TO STATION				PAINT PAVEMENT MARKING						TEMPORARY			SHORT-TERM	NOTES
				4 INCH WHITE (EDGE LINE)	4 INCH YELLOW (NO PASS ZONE OR DBL. YELLOW)	4 INCH (SKIP-DASH)	6 INCH (CROSSWALKS EDGE LINES) WHITE	24 INCH (STOP BARS) WHITE	LETTERS AND SYMBOLS	4 INCH	6 INCH	24 INCH	4 INCH	
				FOOT	FOOT	FOOT	FOOT	FOOT	SQ FT	FOOT	FOOT	FOOT	FOOT	
	121+15.0	TO	124+79.7			91				91				
EQ STA 124+79.7 (BK) = 128+91.9 (AH)				2,013						2013			302	
LT	128+91.9	TO	132+79.6		388					388				NPZ
	128+91.9	TO	138+98.5			252				252				
EQ STA 138+98.5 (BK) = 132+97.2 (AH)				3,015						3015			452	
	147+60.0	TO	147+66.0				84				84			CROSS WALK
	158+24.0	AND	158+65.0					42				42		STOP BAR
	162+65.0	AND	163+10.0					42				42		STOP BAR
	132+97.2	TO	163+12.0			754				754				
TOTALS				5,028	388	1,097	84	84		6,512	84	84	754	

Patching Survey
 IL 14 - Started at Washington St. in McLeansboro - milepost 0.0

Milepost	Eastbound		Westbound	
	Length	Width	Length	Width
0	6	24		
	6	13	6	13
	4	25		
	6	14		
			4	20
	4	13	4	13
	6	13		
	4	13	4	13
			6	13
	4	13	4	13
			10	13
	6	13	6	13
2.2	6	13	6	13
	6	13	6	13
	6	13	4	13
	4	13	4	13
	6	13	4	13
	8	13	8	13
	4	13	4	13
2.9	4	13	4	13
	6	13	6	13
			4	30
			4	13
3.2	6	13	6	13
	6	13	6	13
	6	13	6	13
	6	13		
3.5	4	13	4	13
	RR		RR	
	4	13	4	13
	4	13	4	13
	6	13	6	13
			10	13
	4	13	4	13
	6	13	6	13
	6	13	6	13
	6	13	6	13
4				
	6	13	6	13

Milepost	Eastbound		Westbound	
	Length	Width	Length	Width
	6	13		
	6	13	6	13
			4	13
	4	13	4	13
14.0 MP				
	4	13	4	13
4.5	6	13	6	13
	6	13	6	13
	4	13		
	6	13	6	13
	6	13		
4.7			4	13
	4	13	4	13
	4	13	4	13
	4	13	4	13
	6	13	6	13
5.1				
	4	13	4	13
	8	13	8	13
15.0 MP				
	6	13	6	13
5.5	6	13	6	13
	6	13		
	4	13	4	13
	4	13	4	13
	4	13	4	13
5.8	12	13	12	13
	7	13	7	13
	6	13	6	13
	4	13	4	13
	4	13	4	13
	4	13	4	13
6	8	13	8	13
	4	13	4	13
	6	13	6	13
16.0 MP				
6.5	4	13	4	13
	4	13	4	13
	8	13		
			6	13

NOTE: FOR INFORMATION ONLY.
 FINAL PATCHING LOCATIONS AND
 QUANTITIES WILL BE DETERMINED BY
 THE ENGINEER.

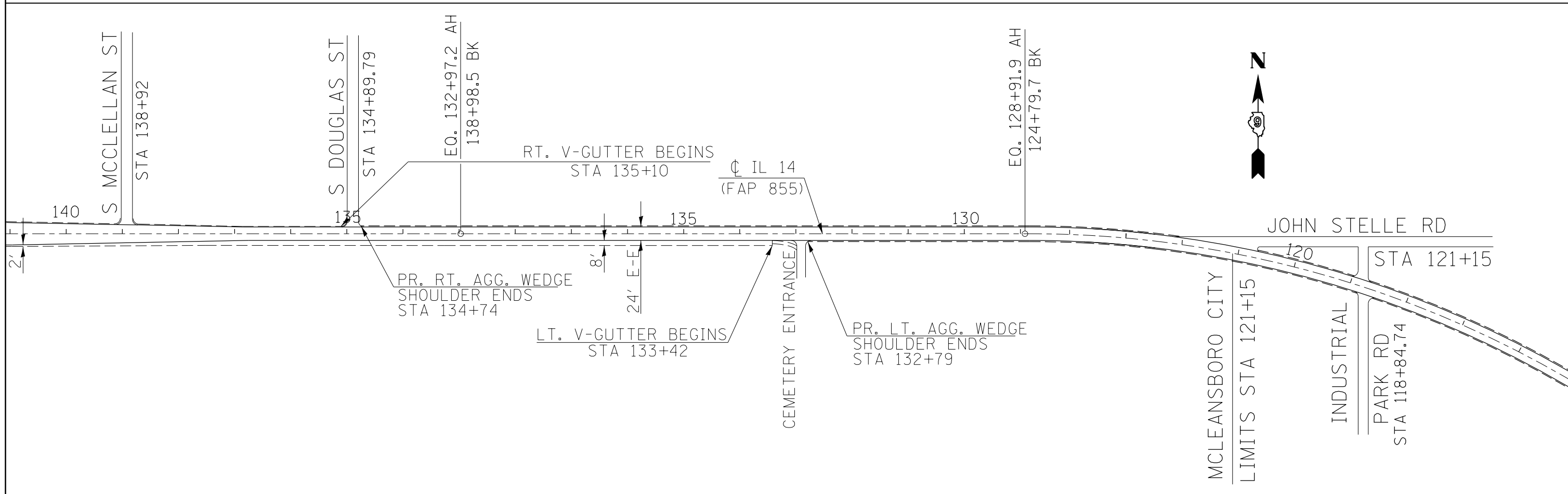
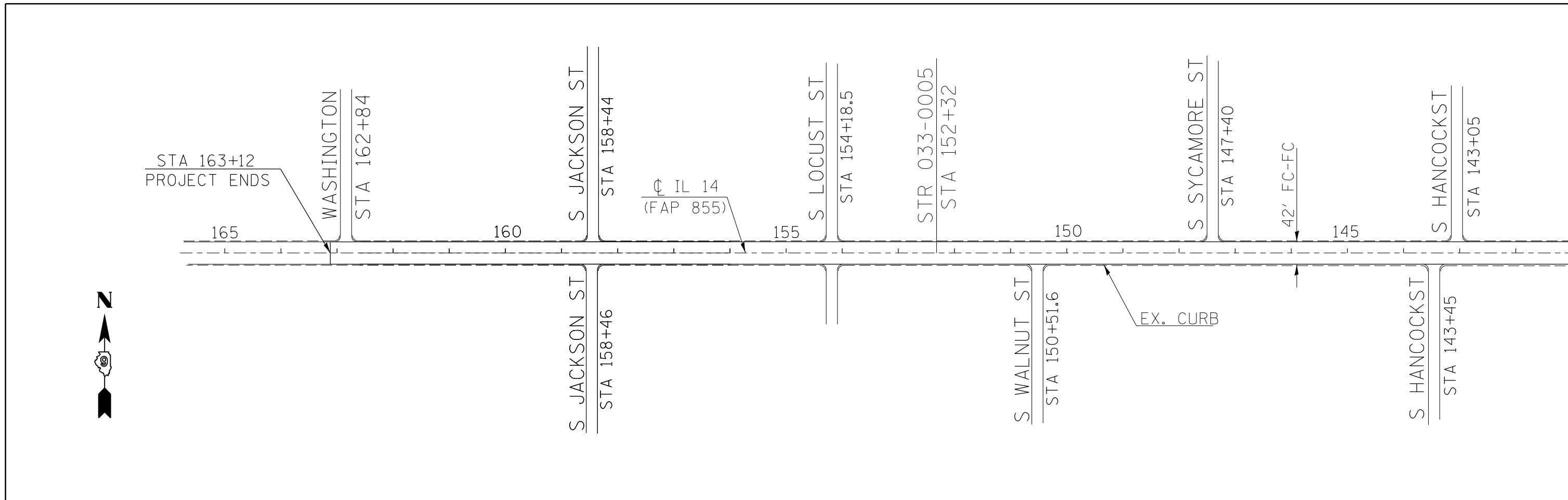
Patching Survey
 IL 14 - Started at Washington St. in McLeansboro - milepost 0.0 (STA 163+12)

Milepost	Eastbound		Westbound	
	Length	Width	Length	Width
	6	13	6	13
	6	13	6	13
	4	13	4	13
	4	13	4	13
	6	13	6	13
7.1	6	13	6	13
	4	13	4	13
	4	13	4	13
	8	13	8	13
	4	13	4	13
	4	13	4	13
MP 17.0	4	13	4	13
	4	13	4	13
	4	13	4	13
			10	13
	6	13		
	4	13	4	13
	6	13	6	13
7.5	6	13	6	13
	6	13	6	13
	6	13	6	13
	4	13	4	13
	8	13	8	13
	6	13	6	13
7.8	6	13	6	13
	4	13	4	13
8	8	13	8	13
	4	13	4	13
	10	13	10	13
			8	13
	6	13		
	8	13	8	13
	4	13	4	13
	6	13	6	13
	6	13	6	13
	4	13	4	13
	4	13	4	13
	4	13	4	13
18.0 MP	10	13	10	13
	4	13	4	13

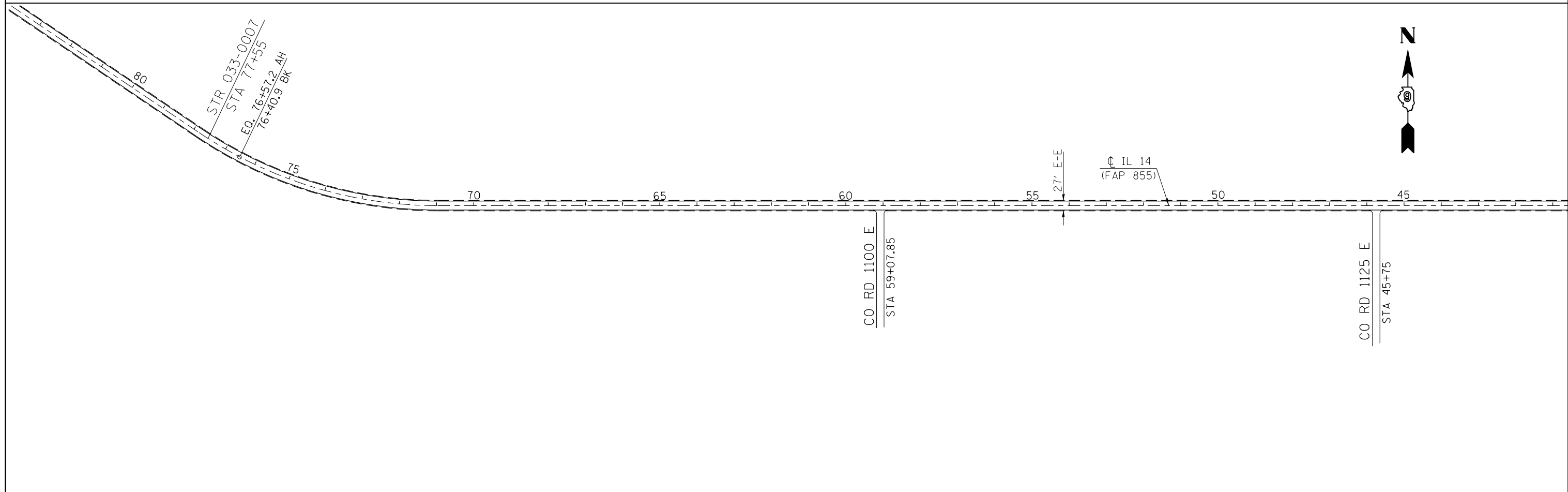
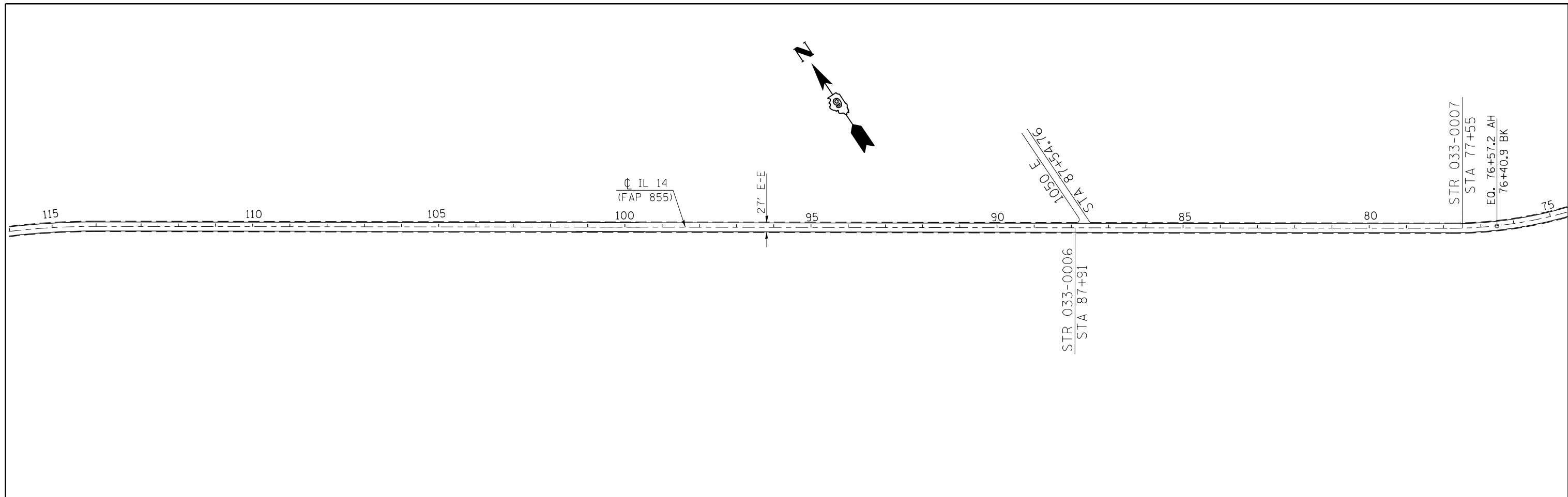
Milepost	Eastbound		Westbound	
	Length	Width	Length	Width
	4	13	4	13
	4	13	4	13
	4	13	4	13
	4	13	4	13
	4	13	4	13
8.5			6	13
			6	13
	4	13	4	13
	8	13	8	13
	4	13	4	13
	6	13	6	13
	4	13	4	13
	6	13	6	13
	4	13	4	13
	4	13	4	13
	12	13	12	13
	6	13	6	13
	6	13	6	13
8.8	4	13	4	13
	4	13	4	13
	8	13	8	13
	6	13		13
	6	13	6	13
	4	13	4	13
	4	13	4	13
	4	13	4	13
	4	13	4	13
	4	13	4	13
	4	13	4	13

White CO MP 0.0

NOTE: FOR INFORMATION ONLY.
 FINAL PATCHING LOCATIONS AND
 QUANTITIES WILL BE DETERMINED BY
 THE ENGINEER.



FILE NAME =	USER NAME = \$USER\$	DESIGNED -	REVISED -	STATE OF ILLINOIS DEPARTMENT OF TRANSPORTATION	PLAN LAYOUT			F.A.P. RTE.	SECTION	COUNTY	TOTAL SHEETS	SHEET NO.
c:\pwork\pwork\pwork\kellykd\0271238\78271-Design.dgn		DRAWN -	REVISED -		SCALE:	SHEET NO. 1 OF 15 SHEETS	STA 107+00 TO STA 165+00	855	(9,10)RS-2	HAMILTON	30	18
		CHECKED -	REVISED -					CONTRACT NO. 78271				
		DATE -	REVISED -					ILLINOIS FED. AID PROJECT				

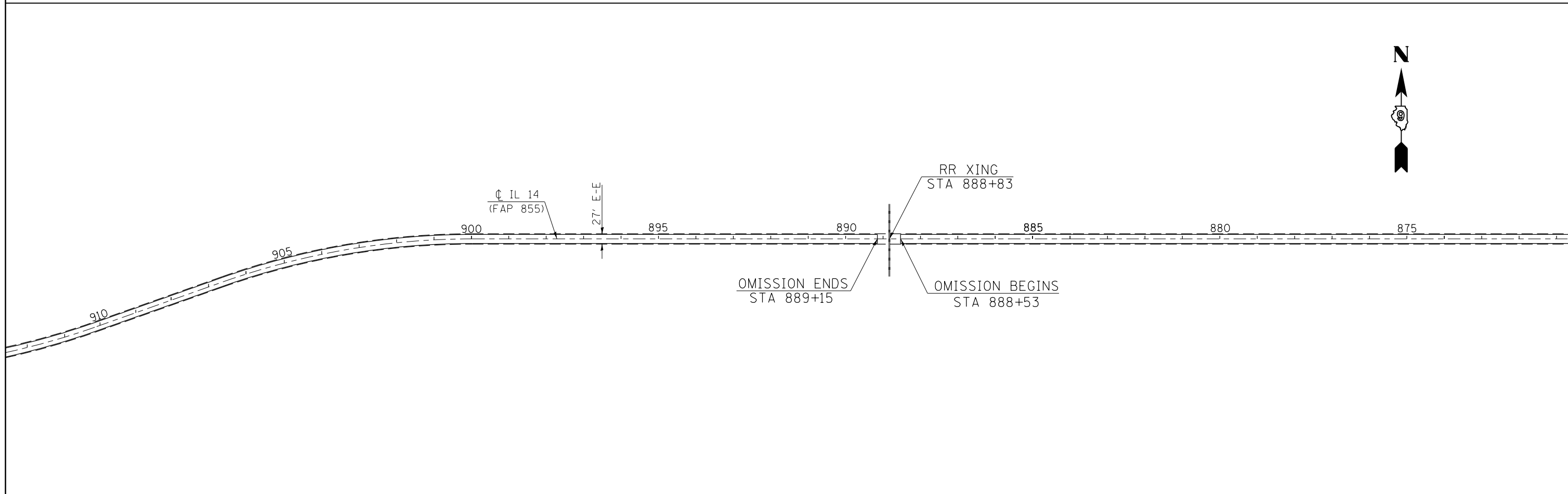
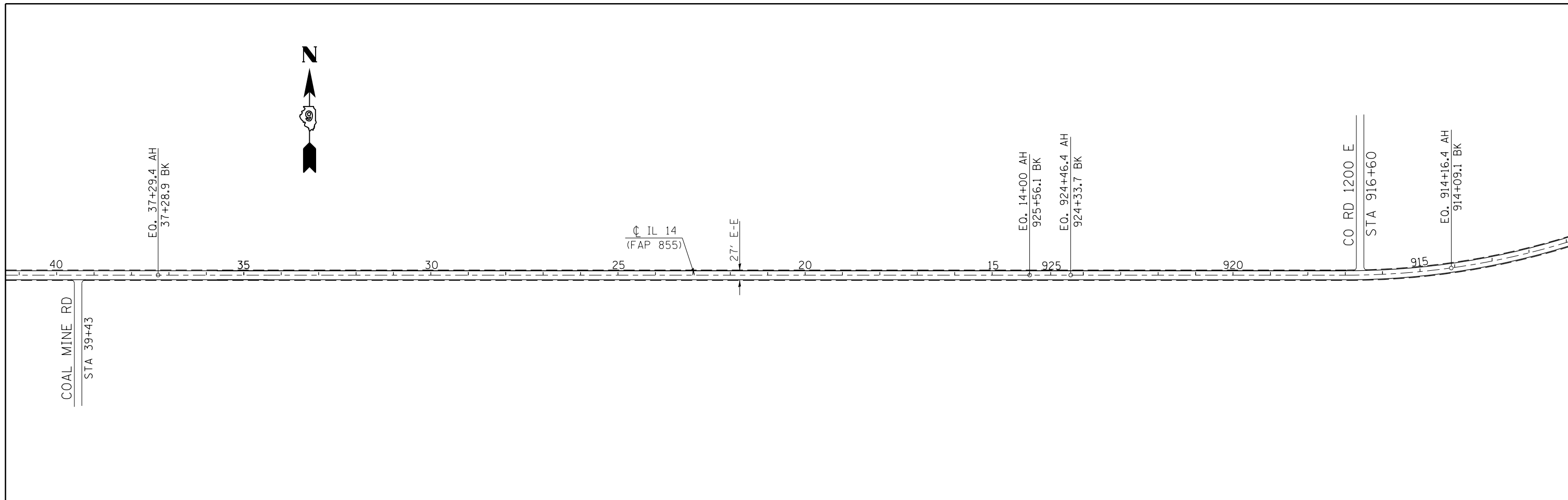


FILE NAME =	USER NAME = \$USER*	DESIGNED -	REVISED -
ct:\pw\work\p\dot\k\elleyk\d\0271238\78271-Design.dgn		DRAWN -	REVISED -
	PLOT SCALE = 400.0000' / in.	CHECKED -	REVISED -
	PLOT DATE = 2/1/2012	DATE -	REVISED -

**STATE OF ILLINOIS
DEPARTMENT OF TRANSPORTATION**

PLAN LAYOUT		
SCALE:	SHEET NO. 2 OF 15 SHEETS	STA. 40+90 TO STA. 106+50

F.A.P. RTE.	SECTION	COUNTY	TOTAL SHEETS	SHEET NO.
855	(9,10)RS-2	HAMILTON	30	19
CONTRACT NO. 78271				
ILLINOIS FED. AID PROJECT				



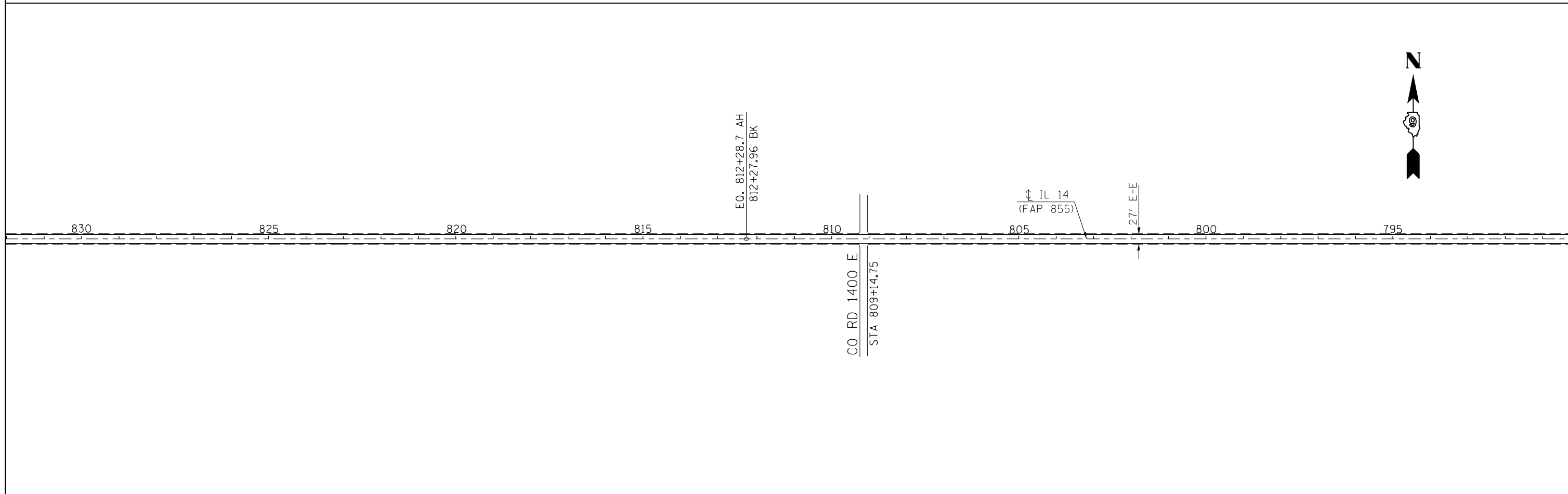
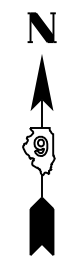
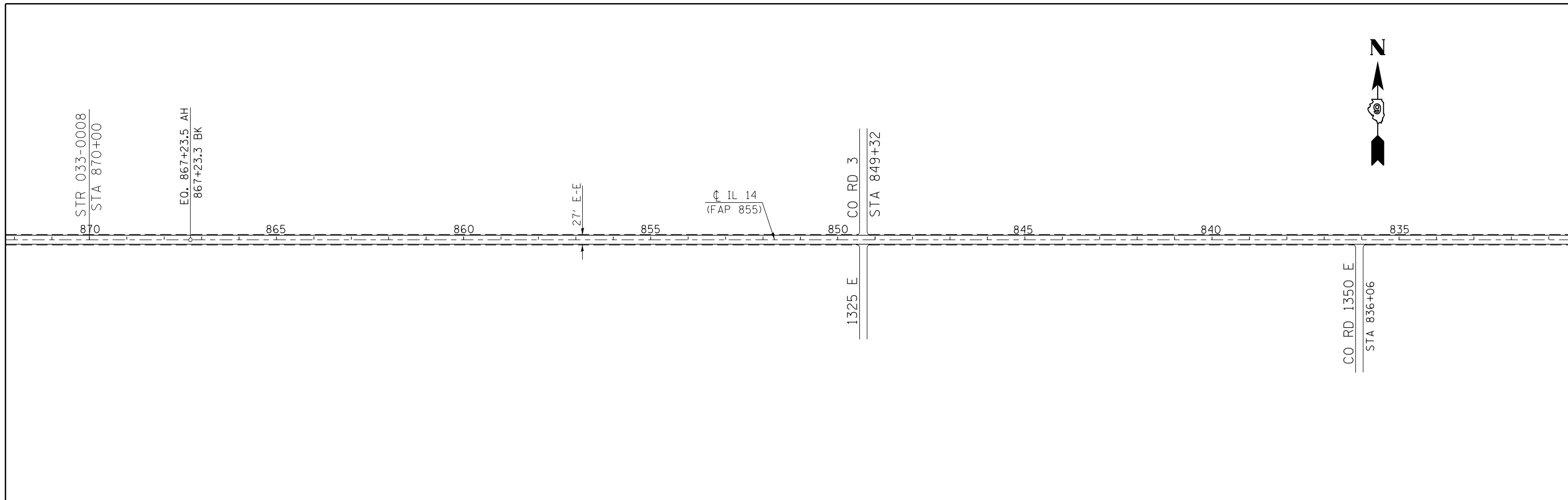
FILE NAME =	USER NAME = \$USER*	DESIGNED -	REVISED -
et:\pwork\pwork\kellykd\0271238\78271-Design.dgn		DRAWN -	REVISED -
	PLOT SCALE = 400.0000' / in.	CHECKED -	REVISED -
	PLOT DATE = 2/1/2012	DATE -	REVISED -

**STATE OF ILLINOIS
DEPARTMENT OF TRANSPORTATION**

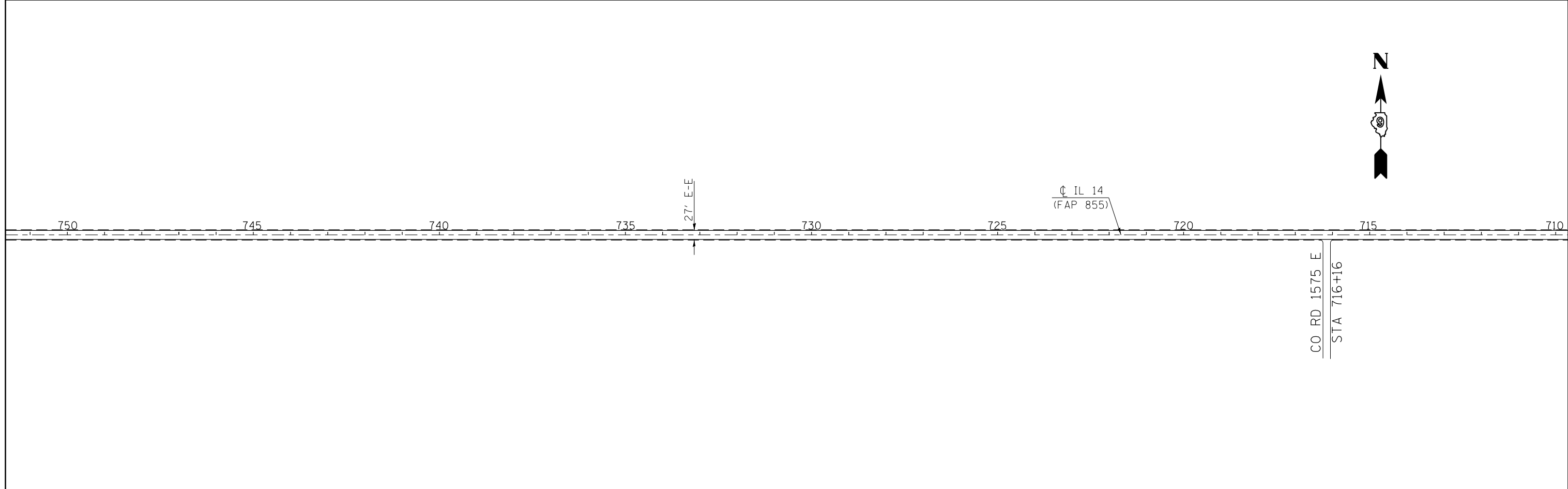
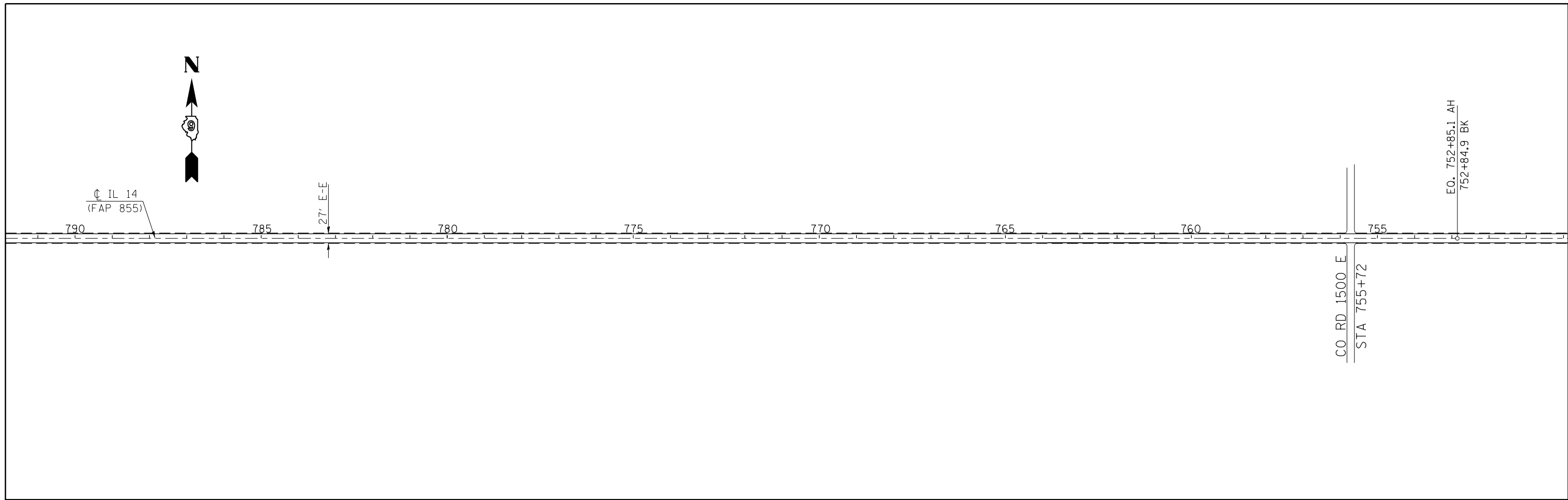
PLAN LAYOUT

SCALE: SHEET NO. 3 OF 15 SHEETS STA. 870+80 TO STA. 41+10

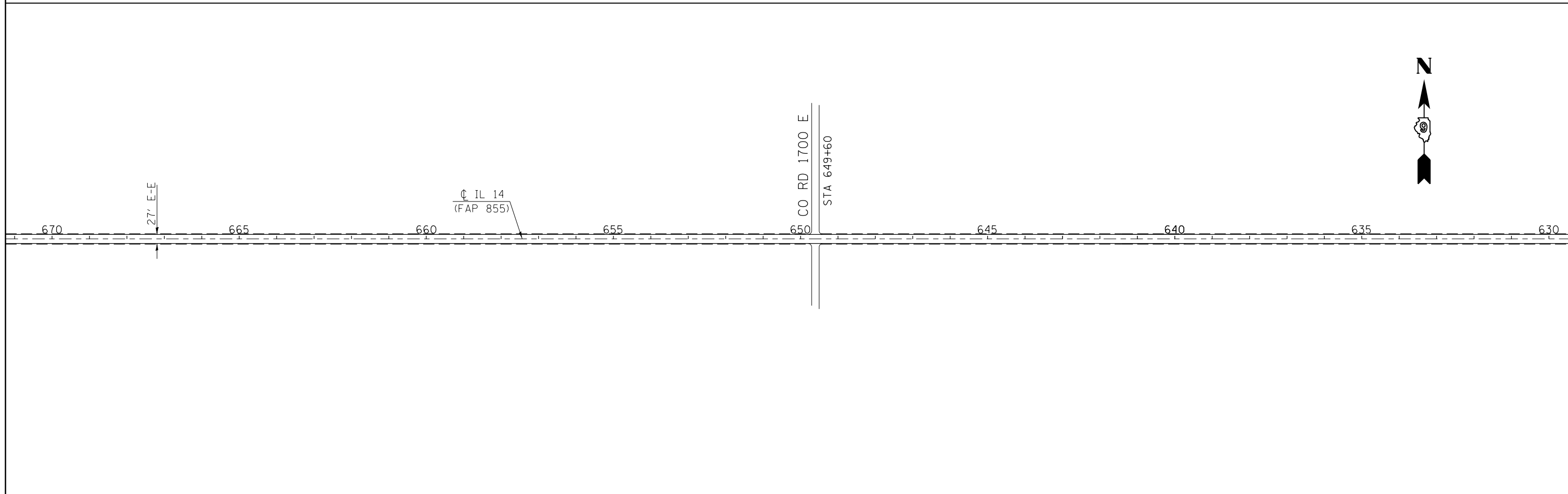
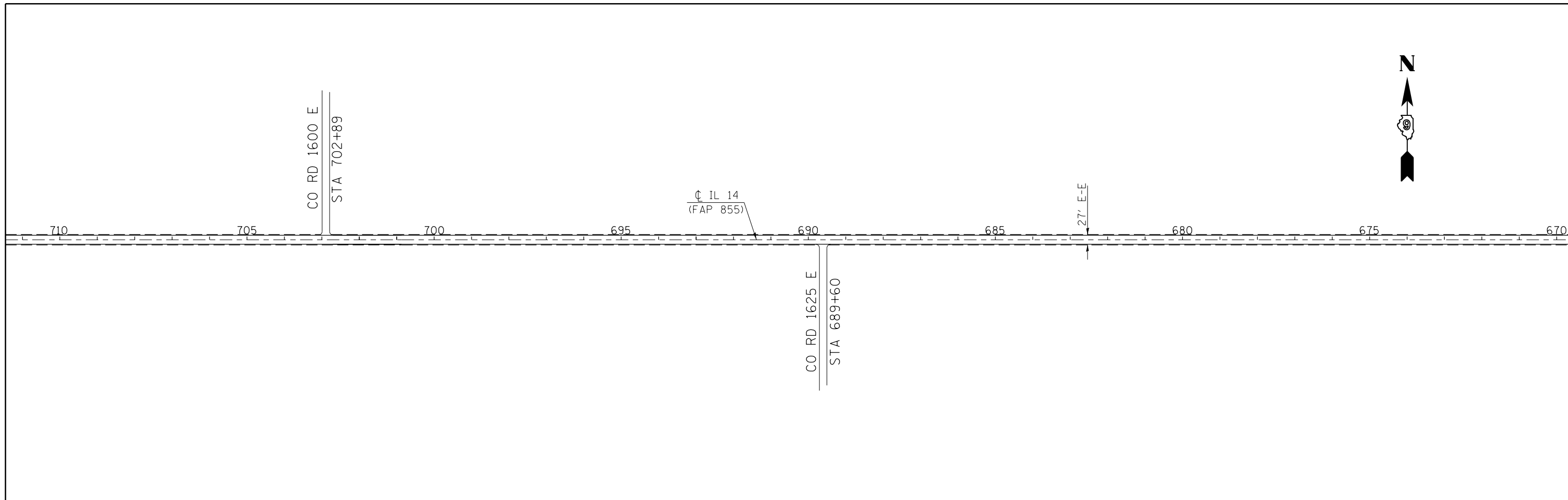
F.A.P. RTE.	SECTION	COUNTY	TOTAL SHEETS	SHEET NO.
855	(9,10)RS-2	HAMILTON	30	20
CONTRACT NO. 78271				
ILLINOIS FED. AID PROJECT				



FILE NAME = c:\pwork\pwork\dot\kellykd\0271238\78271-Design.dgn	USER NAME = \$USER\$	DESIGNED -	REVISED -	STATE OF ILLINOIS DEPARTMENT OF TRANSPORTATION	PLAN LAYOUT			F.A.P. RTE.	SECTION	COUNTY	TOTAL SHEETS	SHEET NO.
	PLOT SCALE = 400.0000' / in.	CHECKED -	REVISED -		SCALE:	SHEET NO. 4 OF 15 SHEETS	STA. 790+10 TO STA. 872+10	855	(9,10)RS-2	HAMILTON	30	21
PLOT DATE = 2/1/2012	DATE -	REVISED -			CONTRACT NO. 78271							
ILLINOIS FED. AID PROJECT												



FILE NAME = c:\pw\work\p\dot\k\elleykd\0271238\78271-Design.dgn	USER NAME = \$USER*	DESIGNED -	REVISED -	STATE OF ILLINOIS DEPARTMENT OF TRANSPORTATION	PLAN LAYOUT			F.A.P. RTE.	SECTION	COUNTY	TOTAL SHEETS	SHEET NO.
	PLOT SCALE = 400.0000' / in.	CHECKED -	REVISED -					855	(9,10)RS-2	HAMILTON	30	22
PLOT DATE = 2/1/2012	DATE -	REVISED -	REVISED -		SCALE:	SHEET NO. 5 OF 15 SHEETS	STA. 710+00 TO STA. 791+90	ILLINOIS FED. AID PROJECT				
CONTRACT NO. 78271												

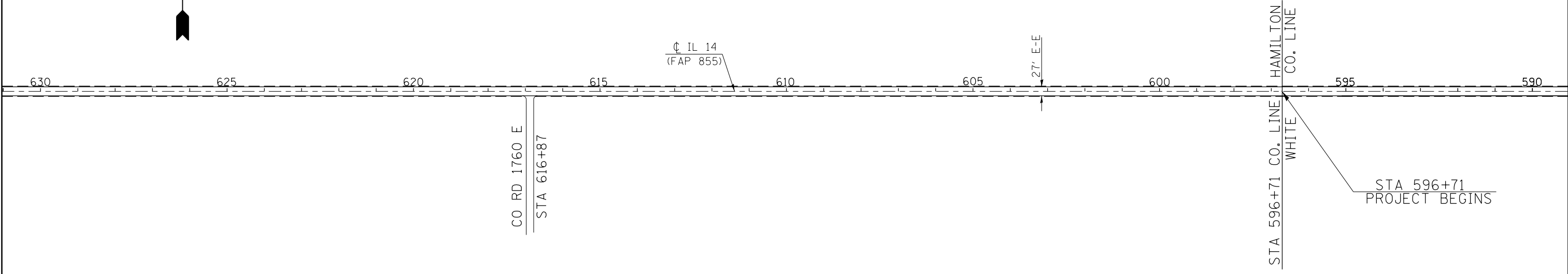


FILE NAME =	USER NAME = \$USER\$	DESIGNED -	REVISED -
et:\pw\work\p\dot\k\elleykd\0271238\78271-Design.dgn		DRAWN -	REVISED -
	PLOT SCALE = 400.0000' / in.	CHECKED -	REVISED -
	PLOT DATE = 2/1/2012	DATE -	REVISED -

**STATE OF ILLINOIS
DEPARTMENT OF TRANSPORTATION**

PLAN LAYOUT		
SCALE:	SHEET NO. 6 OF 15 SHEETS	STA. 630+00 TO STA. 711+00

F.A.P. RTE.	SECTION	COUNTY	TOTAL SHEETS	SHEET NO.
855	(9,10)RS-2	HAMILTON	30	23
CONTRACT NO. 78271			ILLINOIS FED. AID PROJECT	



FILE NAME =	USER NAME = \$USER*	DESIGNED -	REVISED -
et:\pw\work\p\dot\k\l\l\k\d\0271238\78271-Design.dgn		DRAWN -	REVISED -
	PLOT SCALE = 400.0000' / in.	CHECKED -	REVISED -
	PLOT DATE = 2/1/2012	DATE -	REVISED -

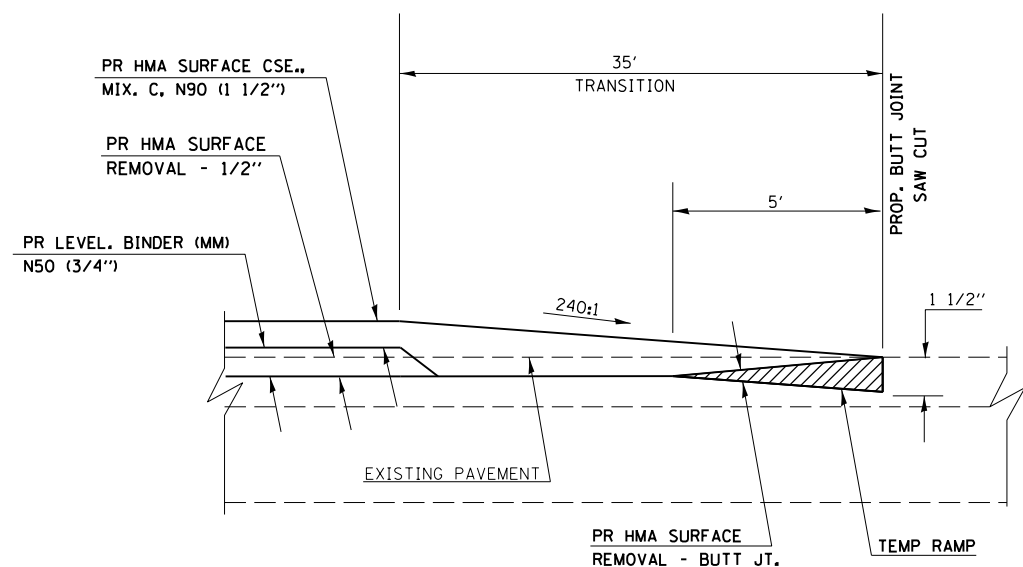
**STATE OF ILLINOIS
DEPARTMENT OF TRANSPORTATION**

PLAN LAYOUT

SCALE: SHEET NO. 7 OF 15 SHEETS STA. 590+00 TO STA. 630+00

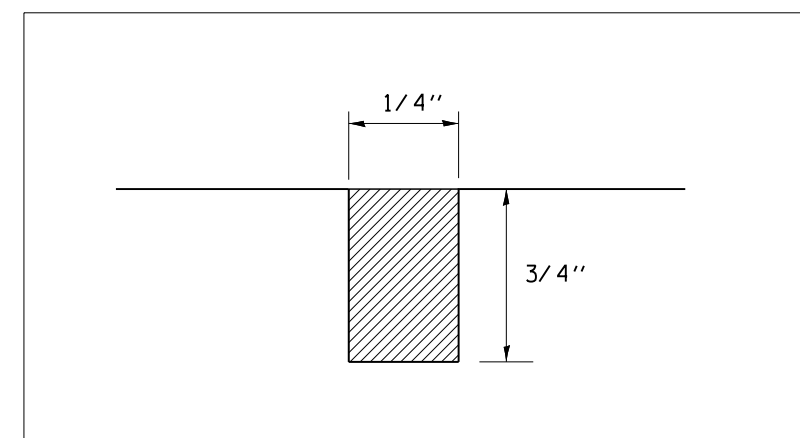
F.A.P. RTE.	SECTION	COUNTY	TOTAL SHEETS	SHEET NO.
855	(9,10)RS-2	HAMILTON	30	24
CONTRACT NO. 78271			ILLINOIS FED. AID PROJECT	

BUTT JOINT DETAIL



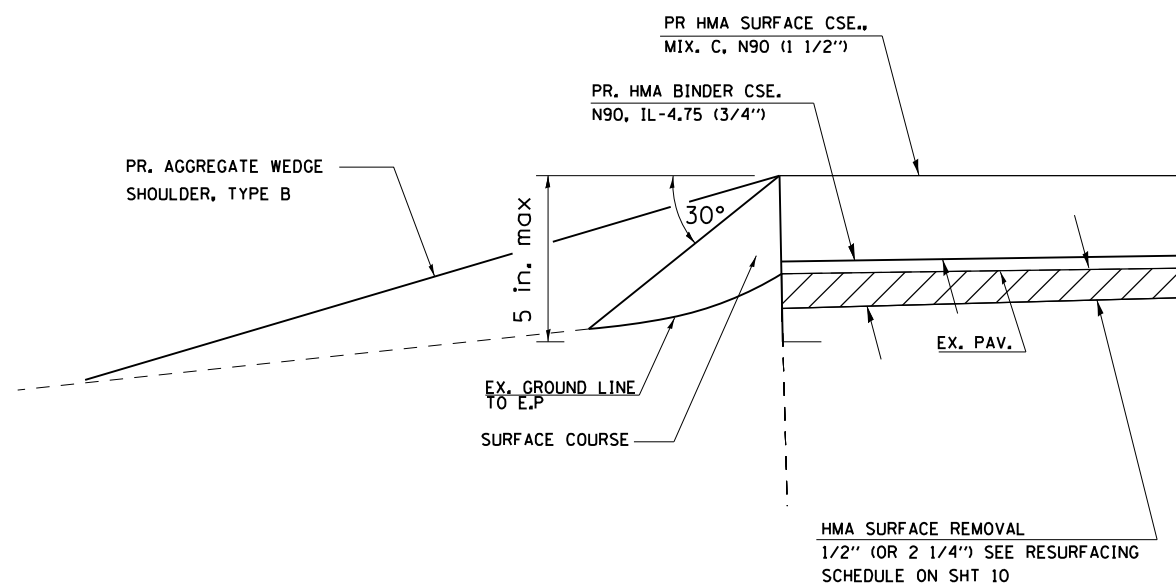
TO BE USED:
 STA 888+18 TO STA 888+53
 STA 889+15 TO STA 889+50
 STA 596+71

BRIDGE JOINT DETAIL

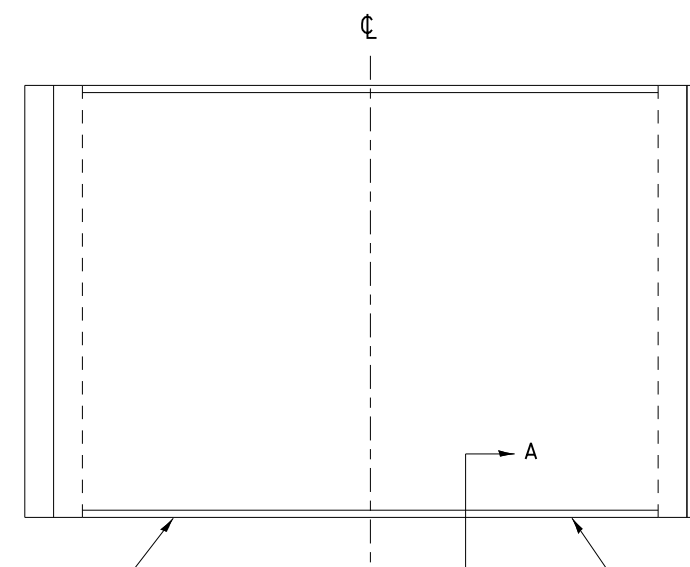


SECTION A-A
SAW CUT

SAFETY EDGE DETAIL



TO BE USED:
 THROUGHOUT PROJECT EXCEPT WHERE
 GUTTER IS PRESENT



PLAN VIEW

1/4" (TYP.) JOINT

BACK ABUTMENT

TO BE USED:
 SN 033-0005
 SN 033-0006
 SN 033-0007
 SN 033-0008

FILL JOINT WITH POURABLE SEALER.
 SAW CUT AND POURABLE SEALER
 COST TO BE INCLUDED WITH HMA SURFACE
 REMOVAL 1/2".

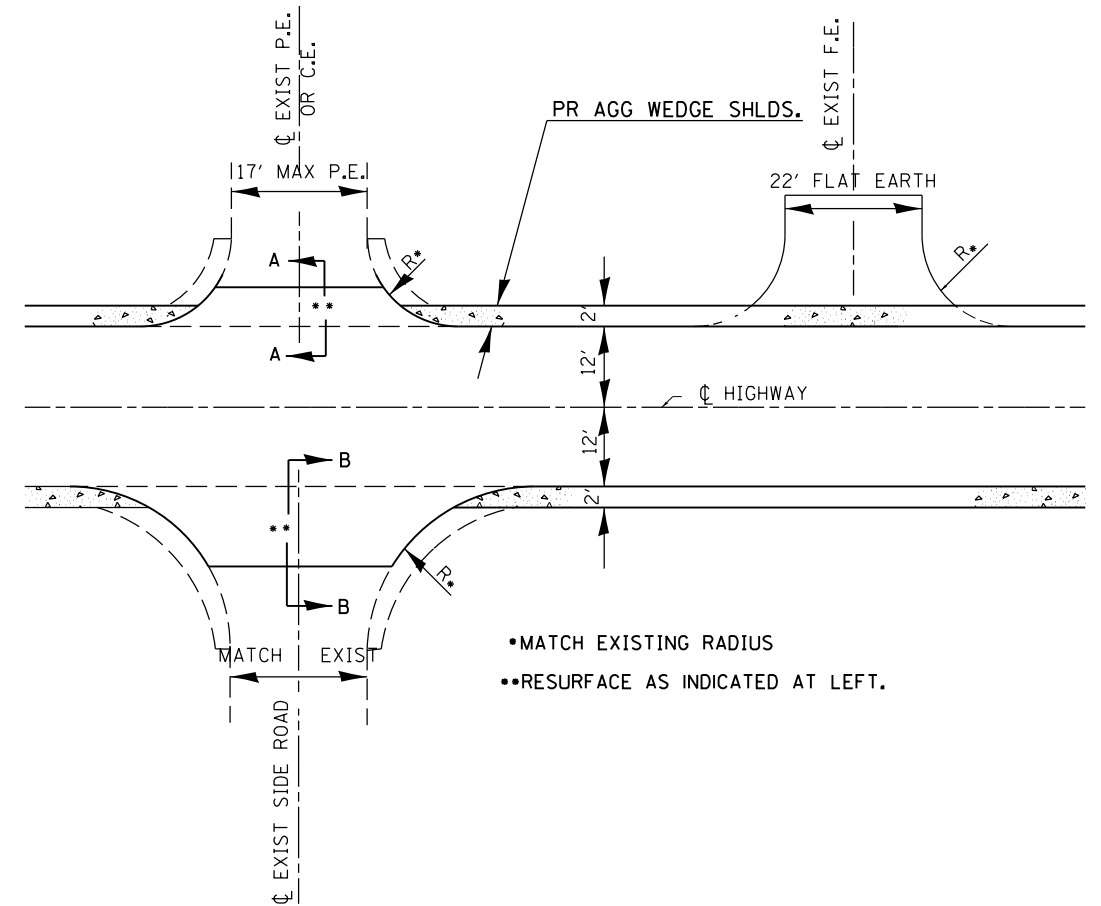
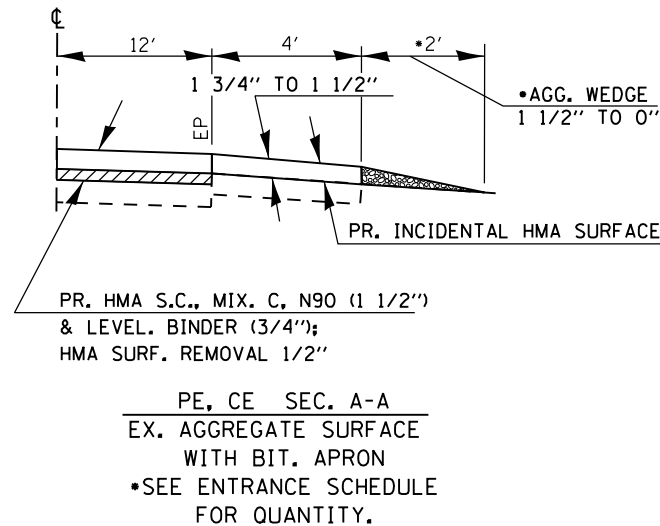
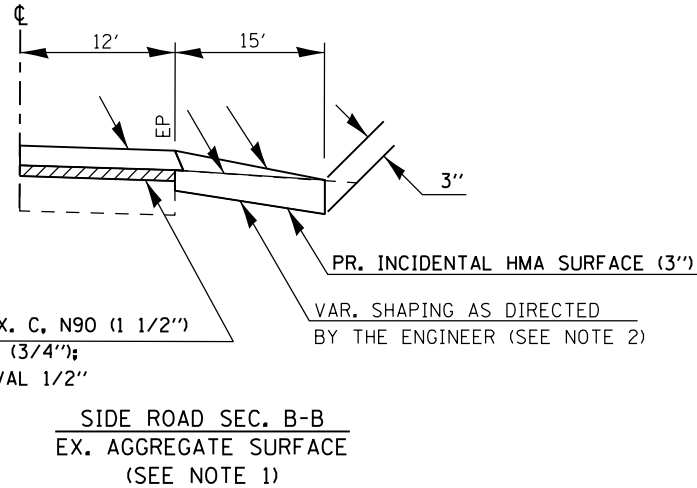
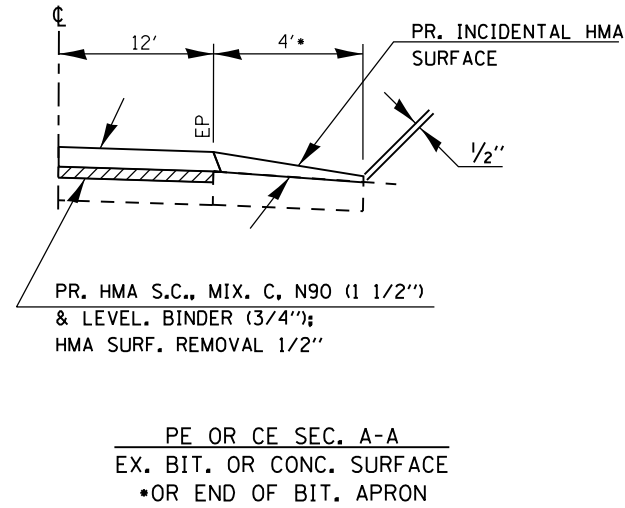
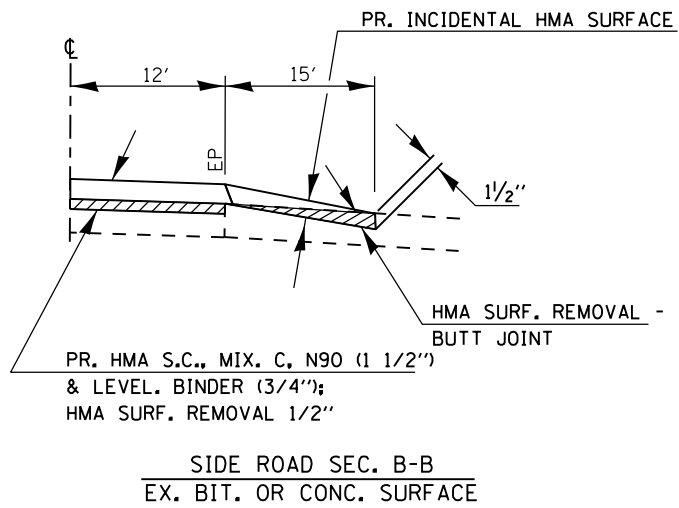
FILE NAME =	USER NAME = \$USER\$	DESIGNED -	REVISED -
et:\pw\work\p\dot\k\ell\yk\d\0271238\78271-Design.dgn		DRAWN -	REVISED -
	PLOT SCALE = 400.0000' / in.	CHECKED -	REVISED -
	PLOT DATE = 2/1/2012	DATE -	REVISED -

STATE OF ILLINOIS
 DEPARTMENT OF TRANSPORTATION

SAFETY EDGE DETAIL			
BUTT JOINT DETAIL			
BRIDGE JOINT DETAIL			
SCALE:	SHEET NO.	OF SHEETS	STA. TO STA.

F.A.P. RTE.	SECTION	COUNTY	TOTAL SHEETS	SHEET NO.
855	(9.10RS-2	HAMILTON	30	25
CONTRACT NO. 78271			ILLINOIS FED. AID PROJECT	

SIDEROAD AND ENTRANCE DETAILS

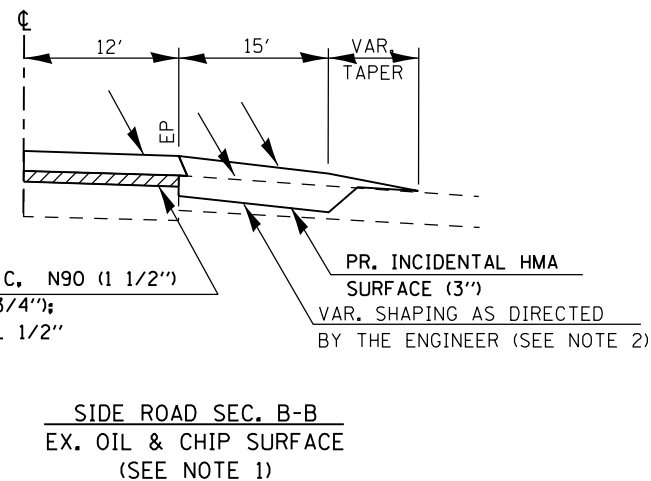


ENTRANCE SCHEDULE FOR LOCATION

TYPE	NUMBER OF ENTRANCES
P.E.	53
C.E.	12

NOTES

- IF EXISTING SUBBASE IS INADEQUATE, AS DETERMINED BY THE ENGINEER, THE SIDE ROADS SHALL BE CORED OUT AND AGGREGATE SUBBASE, TYPE B SHALL BE PLACED FOR BASE. THE COST OF CORING OUT THE SIDE ROAD AND ANY AGGREGATE BASE COURSE SHALL BE PAID FOR AS SPECIFIED IN ART. 109.04 OF THE STANDARD SPECIFICATIONS FOR ROAD AND BRIDGE CONSTRUCTION. IF EXISTING SUBBASE IS DETERMINED TO BE ADEQUATE, THE PREPARATION OF THE BASE SHALL BE CONSTRUCTED ACCORDING TO ARTICLE 406.19.
- VARIABLE SHAPING IS INCLUDED IN THE COST OF INCIDENTAL HOT-MIX ASPHALT SURFACE.



* FAP 855
** (9.10)RS-2

FILE NAME =	USER NAME = \$USER\$	DESIGNED -	REVISED -
et:\pw\work\p\dot\k\ell\eykd\0271238\78271-Design.dgn		DRAWN -	REVISED -
	PLOT SCALE = 400.0000' / in.	CHECKED -	REVISED -
	PLOT DATE = 2/1/2012	DATE -	REVISED -

STATE OF ILLINOIS
DEPARTMENT OF TRANSPORTATION

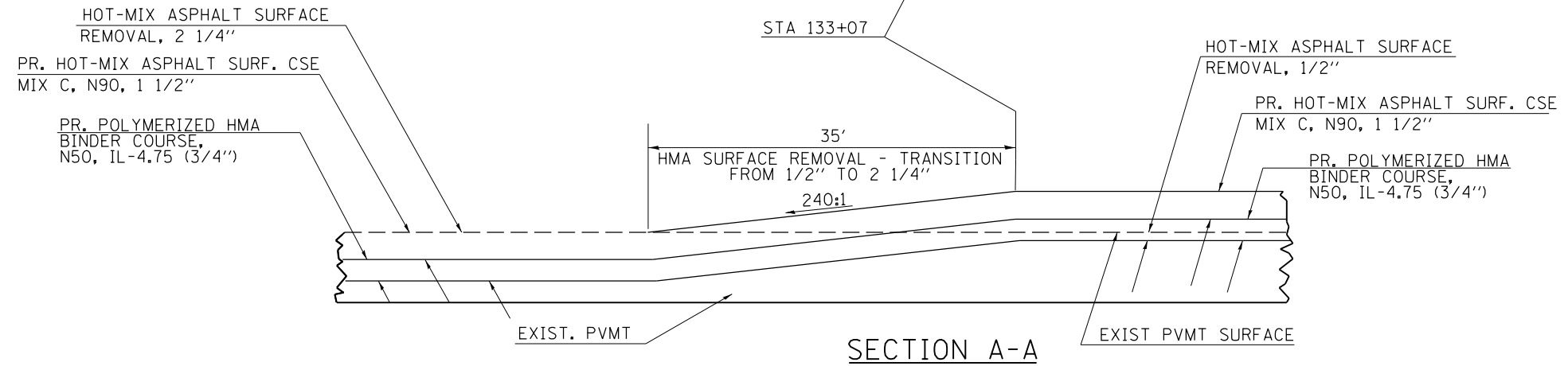
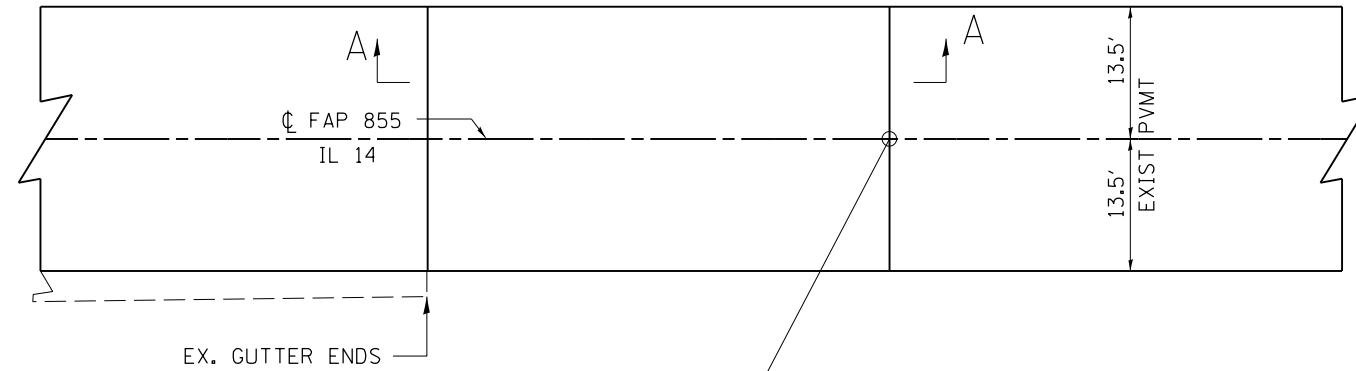
DETAIL SIDE ROADS

SCALE: SHEET NO. OF SHEETS STA. TO STA.

F.A.P. RTE.	SECTION	COUNTY	TOTAL SHEETS	SHEET NO.
855	(9.10)RS-2	HAMILTON	30	26
CONTRACT NO. 78271			ILLINOIS FED. AID PROJECT	

PAVEMENT TRANSITION DETAIL

STA 133+07 TO STA 133+42



FILE NAME =	USER NAME = \$USER*	DESIGNED -	REVISED -
et:\pw\work\p1dot\kellykd\0271238\78271-Design.dgn		DRAWN -	REVISED -
	PLOT SCALE = 400.0000' / in.	CHECKED -	REVISED -
	PLOT DATE = 2/1/2012	DATE -	REVISED -

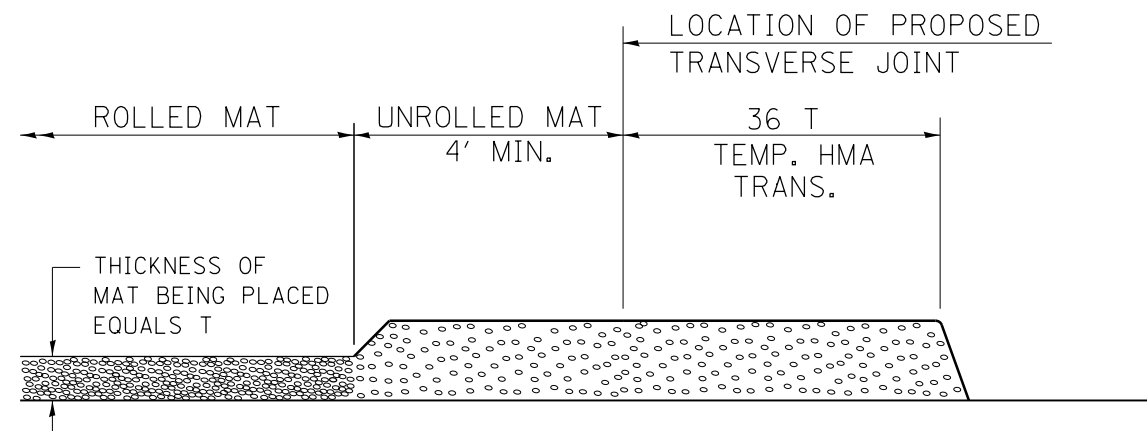
STATE OF ILLINOIS
DEPARTMENT OF TRANSPORTATION

PAVEMENT TRANSITION DETAILS

SCALE: SHEET NO. OF SHEETS STA. TO STA.

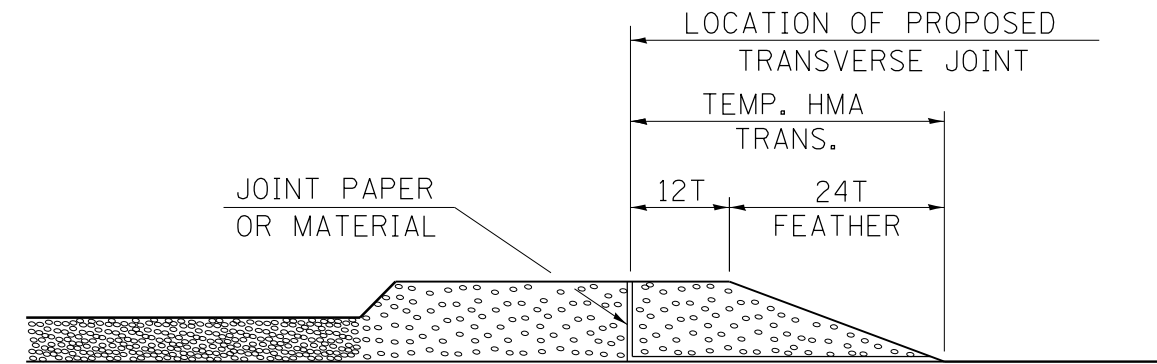
F.A.P. RTE.	SECTION	COUNTY	TOTAL SHEETS	SHEET NO.
855	(9,10)RS-2	HAMILTON	30	27
CONTRACT NO. 78271			ILLINOIS FED. AID PROJECT	

TEMPORARY HOT-MIX ASPHALT TRANSITIONS



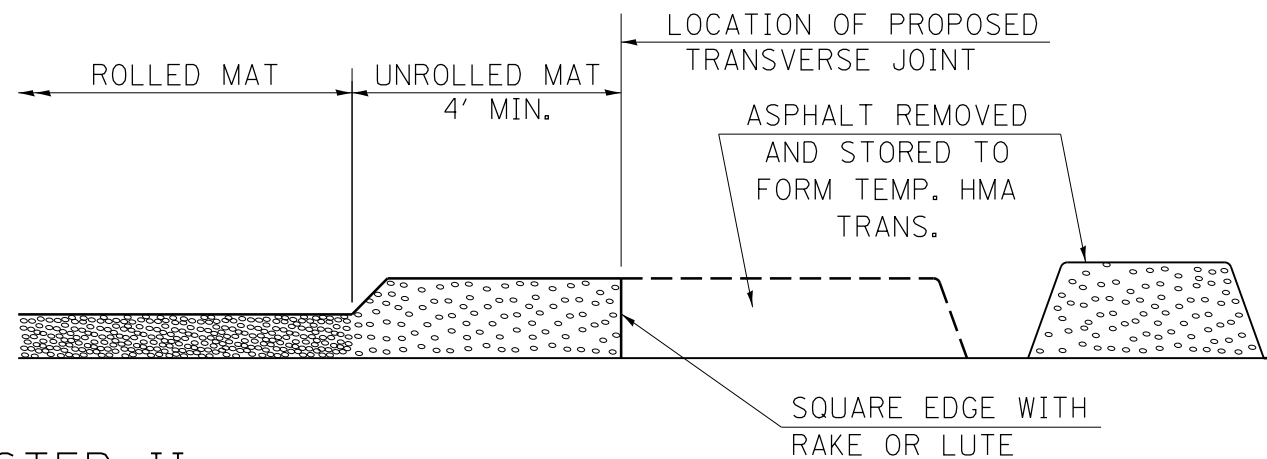
STEP I

1. PLACE HOT-MIX ASPHALT MAT, LENGTH 36 TIMES THE THICKNESS OF THE MAT BEING PLACED PAST THE PROPOSED TRANSVERSE JOINT LOCATION USING NORMAL OPERATING PROCEDURES. EXTREME CARE SHOULD BE TAKEN TO MAINTAIN ENOUGH MATERIAL IN FRONT OF THE SCREED TO MAINTAIN REQUIRED PAVING DEPTH.



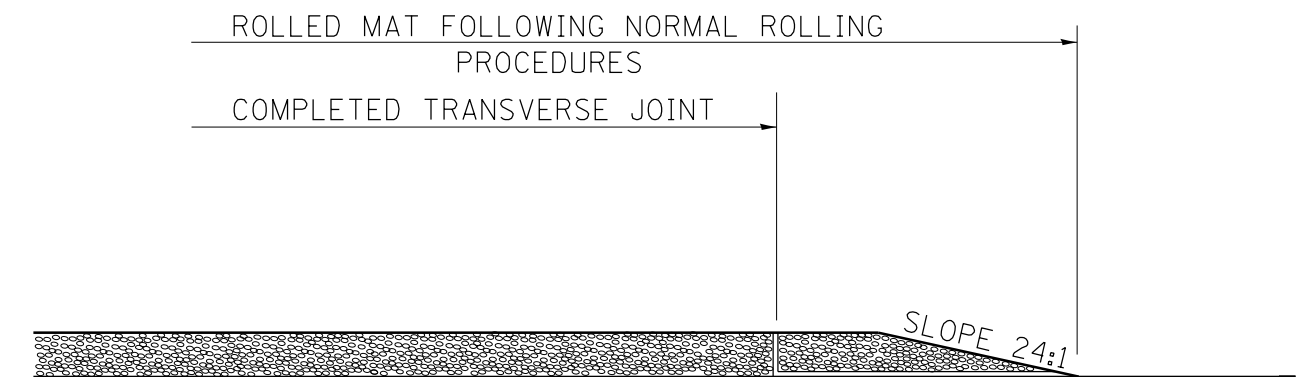
STEP III

1. JOINT PAPER OR OTHER PRESELECTED JOINT MATERIAL IS THEN PLACED IN THE CLEARED AREA AND THE EXCESS ASPHALT USED TO HAND FORM A TRANSITION TO THE DIMENSIONS SHOWN ABOVE.
2. NOTE THAT IN CONSTRUCTING THE TRANSITION, THE MAT DEPTH IS CONTINUED AS PART OF THE TRANSITION BEFORE FORMING THE FEATHER.



STEP II

1. MOVE THE PAVER OUT OF THE WAY AND REMOVE THE ASPHALT FROM THE AREA OF THE PROPOSED TEMPORARY HOT-MIX ASPHALT TRANSITION.
2. SQUARE UP THE END OF THE MAT WITH A RAKE OR LUTE.
3. NOTE THAT THE MAT WITHIN 4' OF THE END OF JOINT IS NOT TO BE ROLLED AT THIS TIME.



STEP IV

1. COMPLETE TEMPORARY TRANSITION BY ROLLING.
2. TO RESUME PAVING, AT THE JOINT, REMOVE TEMPORARY TRANSITION AND DISPOSE OF THE MATERIAL ACCORDING TO ART. 202.03 OF THE STD. SPECS. (COST INCLUDED IN THE CONTRACT).
3. CONSTRUCTING THE TEMPORARY TRANSITIONS WILL NOT BE PAID FOR SEPARATELY IN ACCORDANCE WITH ARTICLE 406.14 OF THE STANDARD SPECIFICATIONS.

STD. 9-26

REVISIONS	
REDRAWN	2-15-89
REVISED	8-16-94
REVISED	01-09-07
RESIZED	05-8-08

* FAS 2826
** (109RS-2, 110RS-2, 110-2RS)

FILE NAME =	USER NAME = \$USER*	DESIGNED -	REVISED -
ct:\pw\work\p\dot\k\ell\ejkd\0271238\78271-Design.dgn		DRAWN -	REVISED -
	PLOT SCALE = 400.0000' / in.	CHECKED -	REVISED -
	PLOT DATE = 2/1/2012	DATE -	REVISED -

**STATE OF ILLINOIS
DEPARTMENT OF TRANSPORTATION**

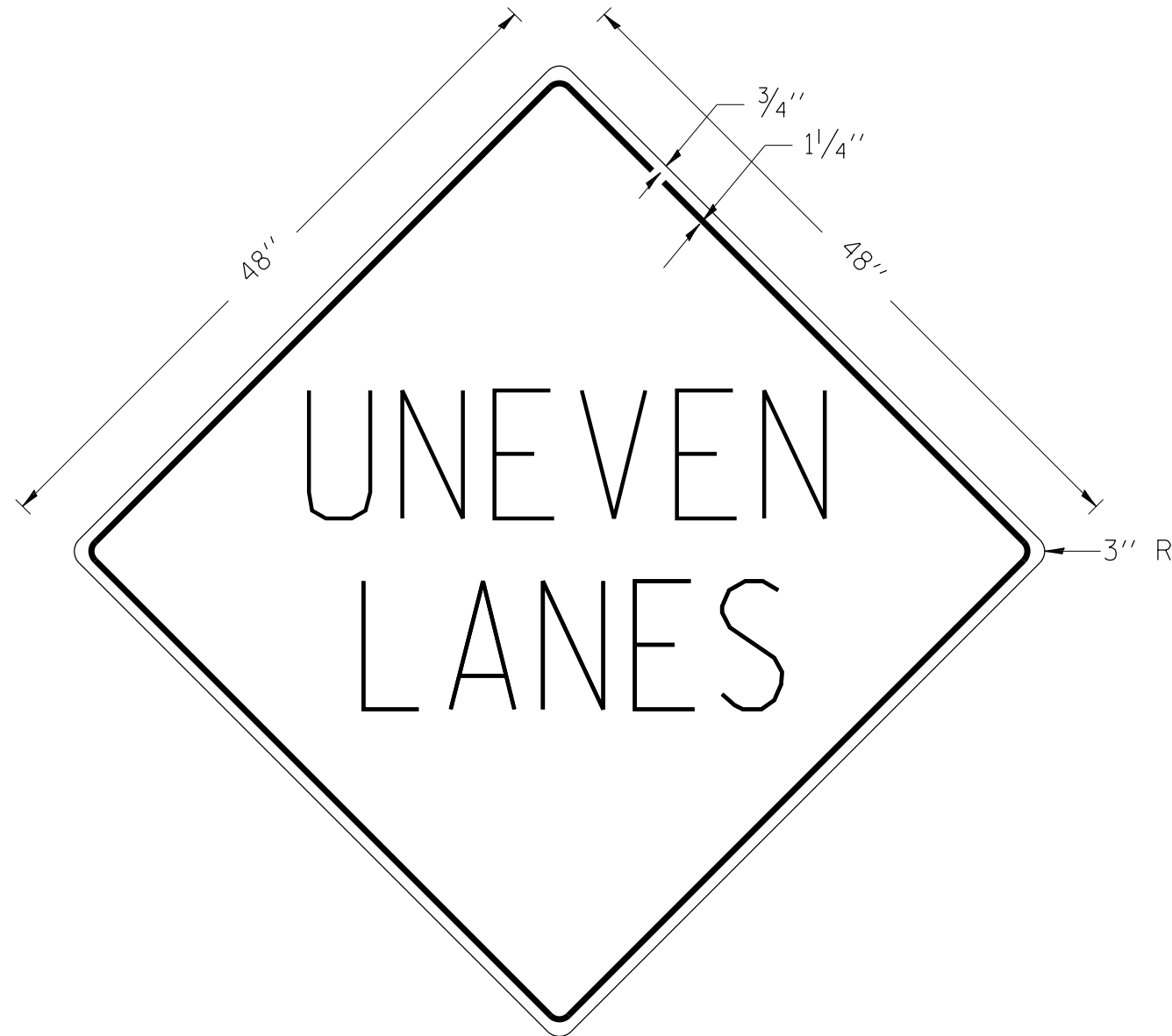
TEMPORARY HOT MIX ASPHALT TRANSITIONS DETAIL

SCALE: SHEET NO. OF SHEETS STA. TO STA.

F.A.P. RTE.	SECTION	COUNTY	TOTAL SHEETS	SHEET NO.
855	(9,10RS-2)	HAMILTON	30	28
			CONTRACT NO. 78271	
ILLINOIS FED. AID PROJECT				

UNEVEN LANES SIGN

W8-11 (48" x 48")



COLORS:

LEGEND AND BORDER - BLACK NON-REFLECTORIZED
 BACKGROUND - ORANGE REFLECTORIZED

NOTE: PRIOR TO ALLOWING TRAFFIC ON ANY PORTION OF THE ROADWAY THAT HAS BEEN COLDMILLED OR BEFORE RESURFACING OPERATIONS BEGIN, THE CONTRACTOR SHALL HAVE ERECTED "UNEVEN PAVEMENT" SIGNS THAT CONFORM TO THE ABOVE DETAILS. A MINIMUM OF ONE SIGN AT EACH END OF THE IMPROVEMENT WILL BE REQUIRED. THE CONTRACTOR SHALL MAINTAIN THE "UNEVEN PAVEMENT" SIGNS UNTIL THE RESURFACING OPERATIONS ARE COMPLETED.

IF AT ANY TIME THE SIGNS ARE IN PLACE BUT NOT APPLICABLE, THEY SHALL BE TURNED FROM THE VIEW OF MOTORISTS OR COVERED AS DIRECTED BY THE ENGINEER.

THE COST OF FURNISHING, ERECTING, MAINTAINING, AND REMOVING THE REQUIRED SIGNS SHALL BE INCLUDED IN THE CONTRACT.

REVISIONS

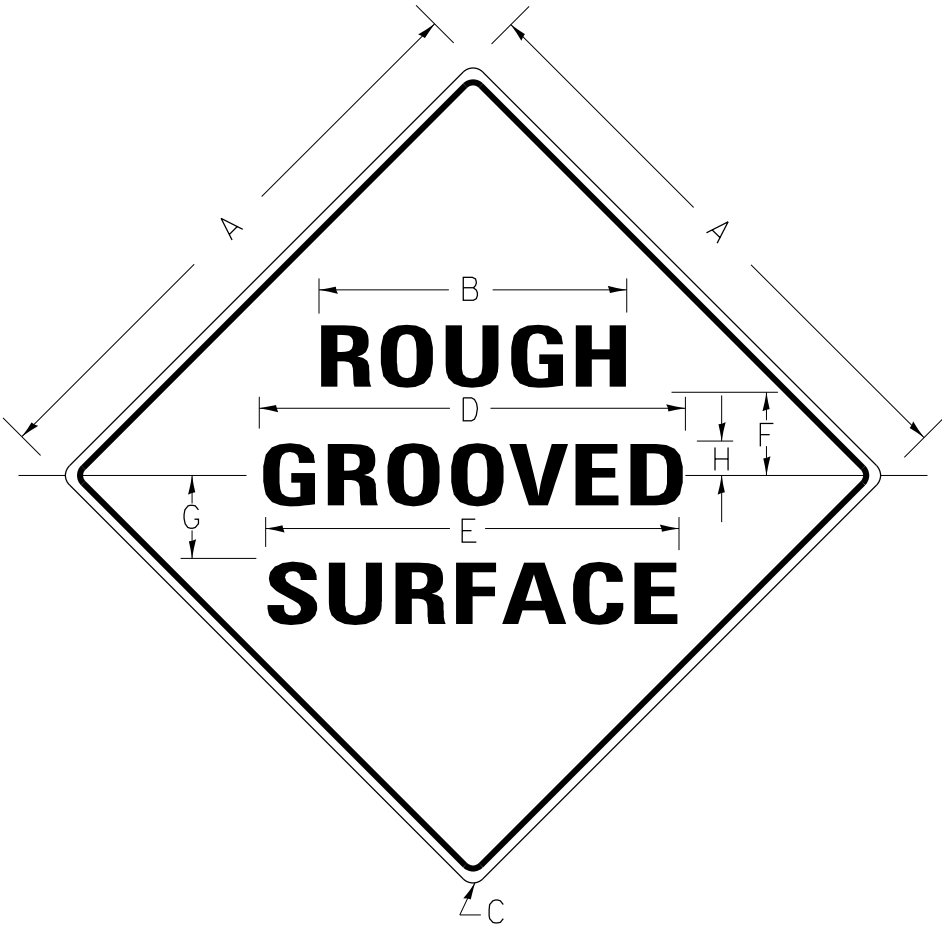
DRAWN	2-15-89
REVISED	4-06-93
REDESIGNED	
RESIZED	

STD. 9-41

FILE NAME =	USER NAME = \$USER\$	DESIGNED -	REVISED -	STATE OF ILLINOIS DEPARTMENT OF TRANSPORTATION	UNEVEN LANES SIGN			F.A.P. RTE.	SECTION	COUNTY	TOTAL SHEETS	SHEET NO.
et:\pwork\pwork\kellykd\0271238\78271-Design.dgn		DRAWN -	REVISED -					855	(9,10)RS-2	HAMILTON	30	29
	PLOT SCALE = 400.0000' / in.	CHECKED -	REVISED -		SCALE:			SHEET NO.	OF SHEETS	STA.	TO STA.	CONTRACT NO. 78271
	PLOT DATE = 2/1/2012	DATE -	REVISED -		ILLINOIS FED. AID PROJECT							

ILLINOIS STANDARD

W8-I106



COLORS:

LEGEND AND BORDER- BLACK NON-REFLECTORIZED
 BACKGROUND- ORANGE REFLECTORIZED

SIGN SIZE	DIMENSIONS							
	A	B	C	D	E	F	G	H
48X48	48.0	24.1	3.0	34.0	33.0	6.0	13.0	3.5

SIGN SIZE	SERIES LINES			MAR- GIN	BOR- DER	BLANK STD.
	1	2	3			
48X48	7C	7C	7C	0.8	1.2	B4-48D

ALL DIMENSIONS IN INCHES

NOTES:

PRIOR TO ALLOWING TRAFFIC ON ANY PORTION OF THE ROADWAY THAT HAS BEEN COLDMILLED, THE CONTRACTOR SHALL HAVE ERECTED "ROUGH GROOVED SURFACE" SIGNS THAT CONFORM TO THE ABOVE DETAILS. A MINIMUM OF ONE SIGN AT EACH END OF THE IMPROVEMENT WILL BE REQUIRED. THE CONTRACTOR SHALL MAINTAIN THE "ROUGH GROOVED SURFACE" SIGNS UNTIL THE COLDMILLED SURFACE IS COVERED WITH LEVELING BINDER OR SURFACE COURSE.

IF AT ANY TIME THE SIGNS ARE IN PLACE BUT NOT APPLICABLE, THEY SHALL BE TURNED FROM THE VIEW OF MOTORISTS OR COVERED AS DIRECTED BY THE ENGINEER.

THE COST OF FURNISHING, ERECTING, MAINTAINING, AND REMOVING THE REQUIRED SIGNS SHALL BE INCLUDED IN THE CONTRACT.

REVISIONS

REDRAWN	2-15-89
REVISED	4-6-93
REVISED	3-27-08
REVISED	

STD. 9-39

FILE NAME =	USER NAME = \$USER\$	DESIGNED -	REVISED -	STATE OF ILLINOIS DEPARTMENT OF TRANSPORTATION	ROUGH GROOVED SURFACE			F.A.P. RTE.	SECTION	COUNTY	TOTAL SHEETS	SHEET NO.	
et:\pwork\pwork\kellykd\0271238\78271-Design.dgn		DRAWN -	REVISED -					855	(9,10)RS-2	HAMILTON	30	30	
PLOT SCALE = 400.0000' / in.		CHECKED -	REVISED -		SCALE:			SHEET NO.	OF	SHEETS	STA.	TO STA.	CONTRACT NO. 78271
PLOT DATE = 2/1/2012		DATE -	REVISED -		ILLINOIS FED. AID PROJECT								