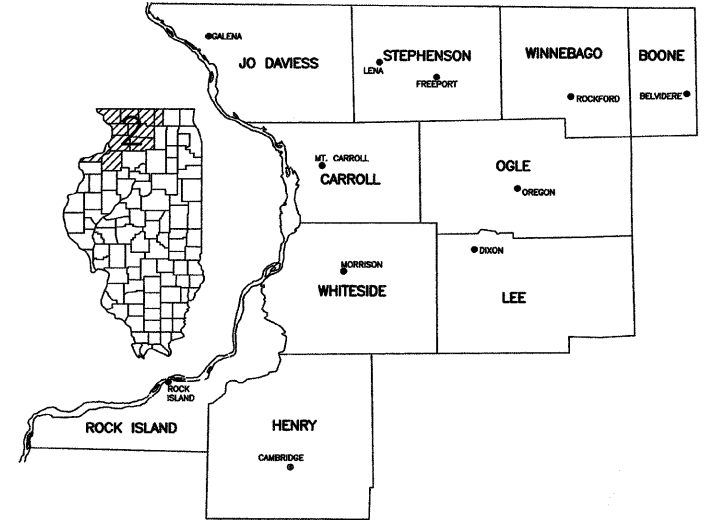


STATE OF ILLINOIS
DEPARTMENT OF TRANSPORTATION
DIVISION OF HIGHWAYS

ILLINOIS DEPARTMENT OF TRANSPORTATION
REGION NO. 2, DISTRICT NO. 2



SHEET No.	TITLE
SHEET 1	COVER SHEET
SHEET 2	SCHEDULE OF QUANTITIES, GENERAL NOTES, SUMMARY OF QUANTITIES
SHEET 3	STANDARD LEGEND
SHEETS 4-9	REMOVAL PLAN
SHEETS 10-21	SIDEWALK PLAN & PROFILES
SHEETS 22-34	SIDEWALK CROSS-SECTIONS
SHEETS 35-36	DETAILS
SHEETS 37-39	SIDEWALK RAMP DETAILS
SHEETS 40-41	TYPICAL SECTIONS

SAFE ROUTES TO SCHOOL

FOR VILLAGE OF LENA

SECTION: 09-00024-00-SW
STEPHENSON COUNTY
PROJECT No. SRTS-4009(053)
JOB No. C-40-044-09
CONTRACT No. 85522

STATE STANDARDS

- 424001-06 CURB RAMPS FOR SIDEWALK
- 602401-03 MANHOLES, TYPE A, 4' DIAMETER, TYPE 5 FRAME, CLOSED LID
- 602801-02 PRECAST REINFORCED CONCRETE FLAT SLAB TOP
- 604021-02 BASE, FRAME AND LID, TYPE 5
- 606001-04 CONCRETE TYPE B AND COMBINATION CONCRETE CURB AND GUTTER
- 701006-03 OFF-RD OPERATIONS, 2L, 2W, 15' (4.5 m) TO 24" (600mm) FROM PAVEMENT EDGE
- 701301-04 LANE CLOSURE, 2L, 2W, SHORT TIME OPERATIONS
- 701311-03 LANE CLOSURE, 2L, 2W, MOVING OPERATIONS ONLY
- 701501-06 URBAN LANE CLOSURE, 2L, 2W, UNDIVIDED
- 701801-05 LANE CLOSURE, MULTILANE, 1W OR 2W CROSSWALK OR SIDEWALK CLOSURE
- 701901-02 TRAFFIC CONTROL DEVICES
- 720011-01 METAL POSTS FOR SIGNS, MARKERS & DELINEATORS
- 728001-01 TELESCOPING STEEL SIGN SUPPORT
- 729001-01 APPLICATIONS OF TYPES A & B METAL POSTS (FOR SIGN MARKERS)



Signed Paul D. Ertmer Date 1/13/12
Paul D. Ertmer, P.E.
Expires November 30, 2013

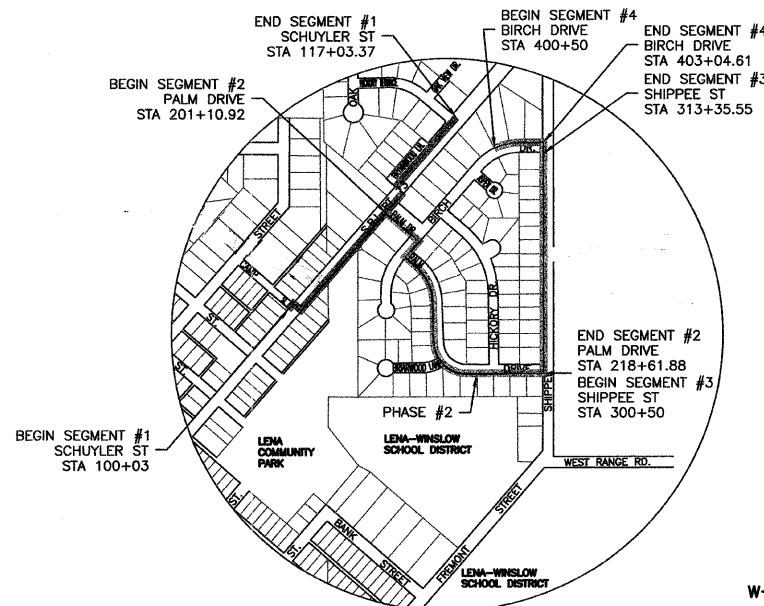
VILLAGE OF LENA	
DENNIS BERGMAN	VILLAGE PRESIDENT
LYNN POHILL	VILLAGE CLERK
BERNARD HICKS	VILLAGE TREASURER

TRUSTEES	
JEFF UPMANN	HENRY SAAVEDRA
STEVE MAGEE	JEFF ZEAL
RON BUCHENAU	GREG BROGE

UTILITIES

UTILITY TYPE	COMMON NAME	ADDRESS
ELECTRIC	COMED CO.	2900 RT. 20 W. FREEPORT, ILLINOIS
TELEPHONE	FRONTIER	112 W. ELM ST. SYCAMORE, ILLINOIS
WATER & SEWER	VILLAGE OF LENA	122 EAST MAIN LENA, ILLINOIS
GAS	NICOR GAS CO.	4651 LINDEN RD. ROCKFORD, ILLINOIS
CABLEVISION	COMCAST COMMUNICATIONS	109 W. MAIN FREEPORT, ILLINOIS

(CONTRACTOR TO BE RESPONSIBLE FOR ANY ADJUSTMENTS TO BE MADE.)



LOCATION MAP

PROJECT LENGTH: 4,725' (0.895 MILES)



FEHR-GRAHAM & ASSOCIATES, LLC

ENGINEERING AND SCIENCE CONSULTANTS

221 E. MAIN ST. SUITE 200
FREEPORT, IL 61032
(815)235-7643

1920 DAIMLER RD.
ROCKFORD, IL 61112
(815)394-4700

515 LINCOLN HIGHWAY
ROCHELLE, IL 61068
(815)562-9087

1107 16th AVENUE
MONROE, WI 53566
(608)329-6400

4440 ASH GROVE DR.
SPRINGFIELD, IL 62711
(217)793-8600

ILLINOIS PROFESSIONAL DESIGN FIRM NUMBER: 184003525

APPROVED Jan. 13 2012
Dennis Bergman
Village of Lena

PASSED February 14 2012
Paul D. Ertmer
DISTRICT ENGINEER OF LOCAL ROADS AND STREETS

RELEASING FOR BID BASED ON LIMITED REVIEW February 14 2012
Eric S. Thibault
DEPUTY DIRECTOR OF HIGHWAYS/REGION 2 ENGINEER

REV. NO.	DESCRIPTION	DATE
0	ORIGINAL PROJECT SUBMITTAL	08/15/10
1	REVISIONS PER IDOT REVIEW	10/29/10
2	REVISIONS PER IDOT REVIEW	12/03/10
3	REVISIONS PER IDOT REVIEW	05/28/11
4	REVISIONS PER IDOT REQUIREMENTS	08/23/11
5	REVISIONS PER IDOT REQUIREMENTS	01/13/12

