

- KEY NOTES**
1. DRIVEWAY PAVEMENT REMOVAL
 2. SIDEWALK REMOVAL
 3. COMBINATION CURB AND GUTTER REMOVAL
 4. LANDSCAPING REMOVAL
 5. SIGN TO BE RELOCATED
 6. PAVEMENT REMOVAL
 7. HOT-MIX ASPHALT SURFACE REMOVAL, 2"

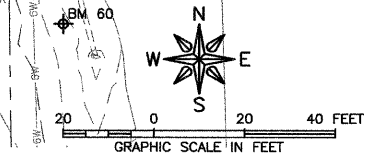
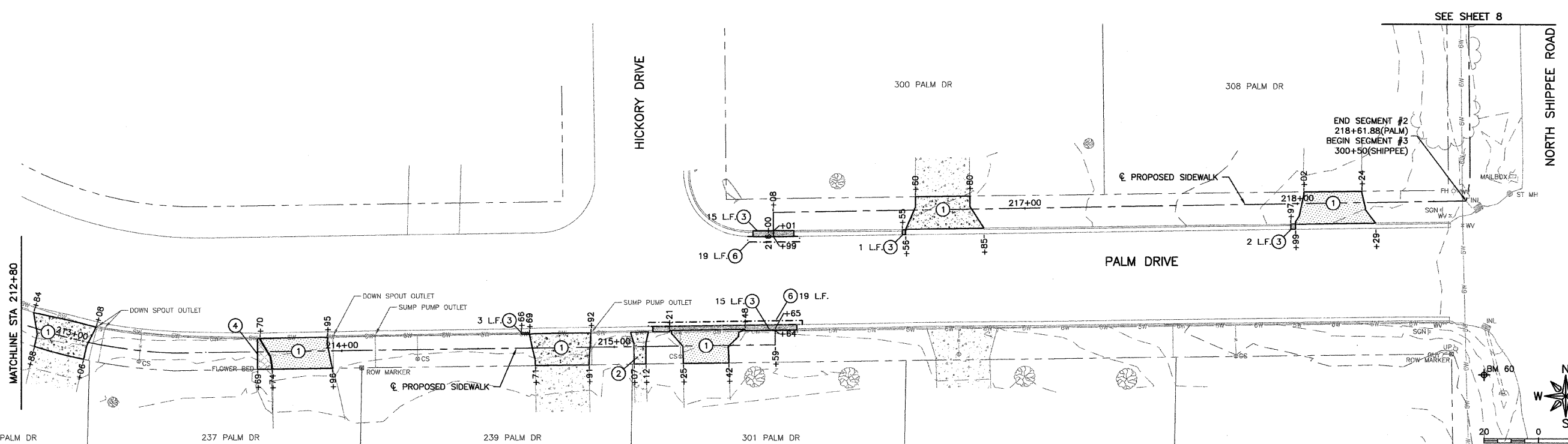
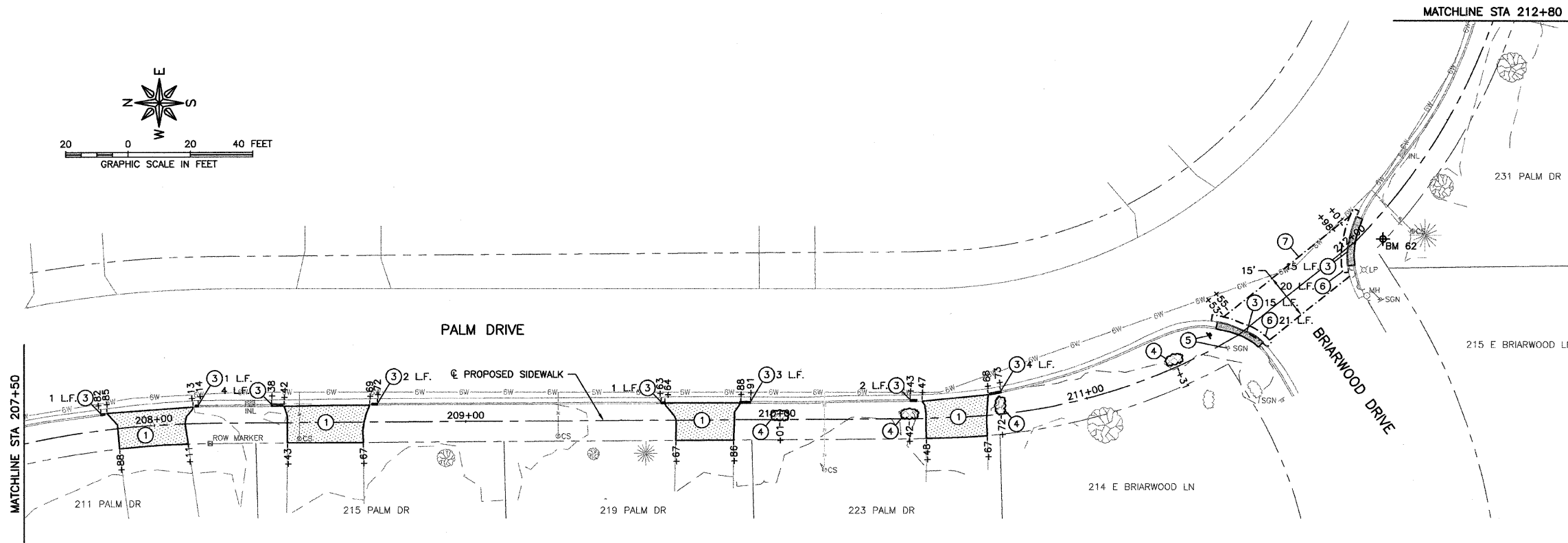
GENERAL NOTES

PROPERTY PINS SHALL BE PROTECTED FROM DAMAGE DURING CONSTRUCTION.

MISCELLANEOUS PLANTINGS AND LANDSCAPING TO BE REMOVED AS DIRECTED BY THE ENGINEER. COSTS TO REMOVE MISCELLANEOUS PLANTINGS AND LANDSCAPING ARE CONSIDERED INCIDENTAL TO THE CONTRACT.

LEGEND

- BITUMINOUS REMOVAL
- CONCRETE REMOVAL
- COMBINATION CONCRETE CURB AND GUTTER REMOVAL
- TREE/SHRUB REMOVAL



BM 60 - CONTROL POINT REBAR - ELEV. 943.41
BM 62 - CONTROL POINT REBAR - ELEV. 945.79

FEHR-GRAHAM & ASSOCIATES, LLC
ENGINEERING AND SCIENCE CONSULTANTS
FREEPORT, IL ROCKFORD, IL ROCHELLE, IL SPRINGFIELD, IL MONROE, WI
ILLINOIS DESIGN FIRM NO. 184-003525
© 2010 FEHR-GRAHAM & ASSOCIATES

OWNER/DEVELOPER:
VILLAGE OF LENA
122 EAST MAIN STREET
P.O. BOX 607
LENA, ILLINOIS 61048

PROJECT AND LOCATION:
SAFE ROUTES
TO SCHOOL PROGRAM

DRAWN BY: B.C.
APPROVED BY: P.E.
DATE: 09/15/10
SCALE: AS SHOWN

REVISIONS		
REV. NO.	DESCRIPTION	DATE
1	REVISIONS PER IDOT REVIEW	10/28/10
5	REVISIONS PER IDOT REQUIREMENTS	01/13/12

DRAWING:
REMOVAL PLAN
PALM DRIVE

JOB NUMBER:
10-138
SHEET NUMBER:
7 of 41