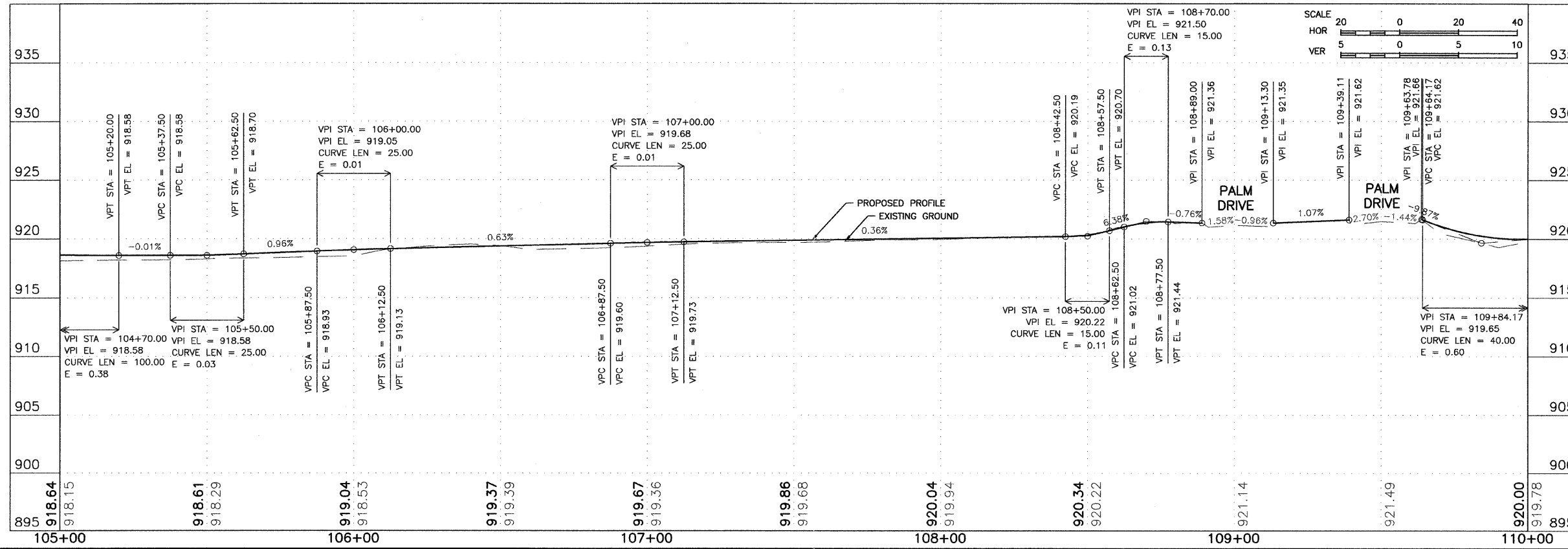


- KEY NOTES**
- PCC DRIVEWAY, 7".
 - PCC SIDEWALK, 5".
 - ADA DETECTABLE WARNING, WITH TYPE A RAMP.
 - SIGN TO BE REMOVED AND RELOCATED.
 - DOMESTIC WATER SERVICE BOX TO BE ADJUSTED.
 - DRAIN OUTLET TO BE ADJUSTED.
 - MANHOLE TO BE ADJUSTED.
 - CONCRETE CURB & GUTTER REPLACEMENT.
 - EPOXY PAVEMENT MARKING.
 - INC. HMA SURFACING, 5", SUB-BASE GRANULAR MATERIAL, TYPE A, 12".
 - INLET TO BE REMOVED AND RECONSTRUCTED AS MANHOLE, TYPE A, 4' DIA, TYPE 5 FRAME, CLOSED LID WITH PRECAST REINFORCED CONCRETE FLAT SLAB TOP. RIM 919.98, INV 917.58.
 - 5 L.F. 15" RCCP @ 1.00%.
 - INLET, TYPE A, RIM 919.90, INV 917.43.
 - ADVANCED WARNING SIGN TO BE INSTALLED BY CONTRACTOR ON METAL POST, TYPE A, W11-2 (30"x30") AND W16-9P (24"x12").



BM #64 - CONTROL POINT REBAR - ELEV. 920.97

FEHR-GRAHAM & ASSOCIATES, LLC
 ENGINEERING AND SCIENCE CONSULTANTS
 FREEPORT, IL ROCKFORD, IL ROCHELLE, IL SPRINGFIELD, IL MONROE, WI
 ILLINOIS DESIGN FIRM NO. 184-003525
 © 2012 FEHR-GRAHAM & ASSOCIATES

OWNER/DEVELOPER:
 VILLAGE OF LENA
 122 EAST MAIN STREET
 P.O. BOX 607
 LENA, ILLINOIS 61048

PROJECT AND LOCATION:
 SAFE ROUTES
 TO SCHOOL PROGRAM

DRAWN BY: B.C.
 APPROVED BY: P.E.
 DATE: 09/15/10
 SCALE: AS NOTED

REVISIONS		
REV. NO.	DESCRIPTION	DATE
2	REVISIONS PER IDOT REVIEW	12/03/10
3	REVISIONS PER IDOT REVIEW	05/26/11
4	REVISIONS PER IDOT REQUIREMENTS	06/23/11
5	REVISIONS PER IDOT REQUIREMENTS	01/13/12

DRAWING:
 SCHUYLER ST SIDEWALK PLAN & PROFILE
 STA 105+00 - STA 110+00

JOB NUMBER:
 10-138
 SHEET NUMBER:
 11 of 41