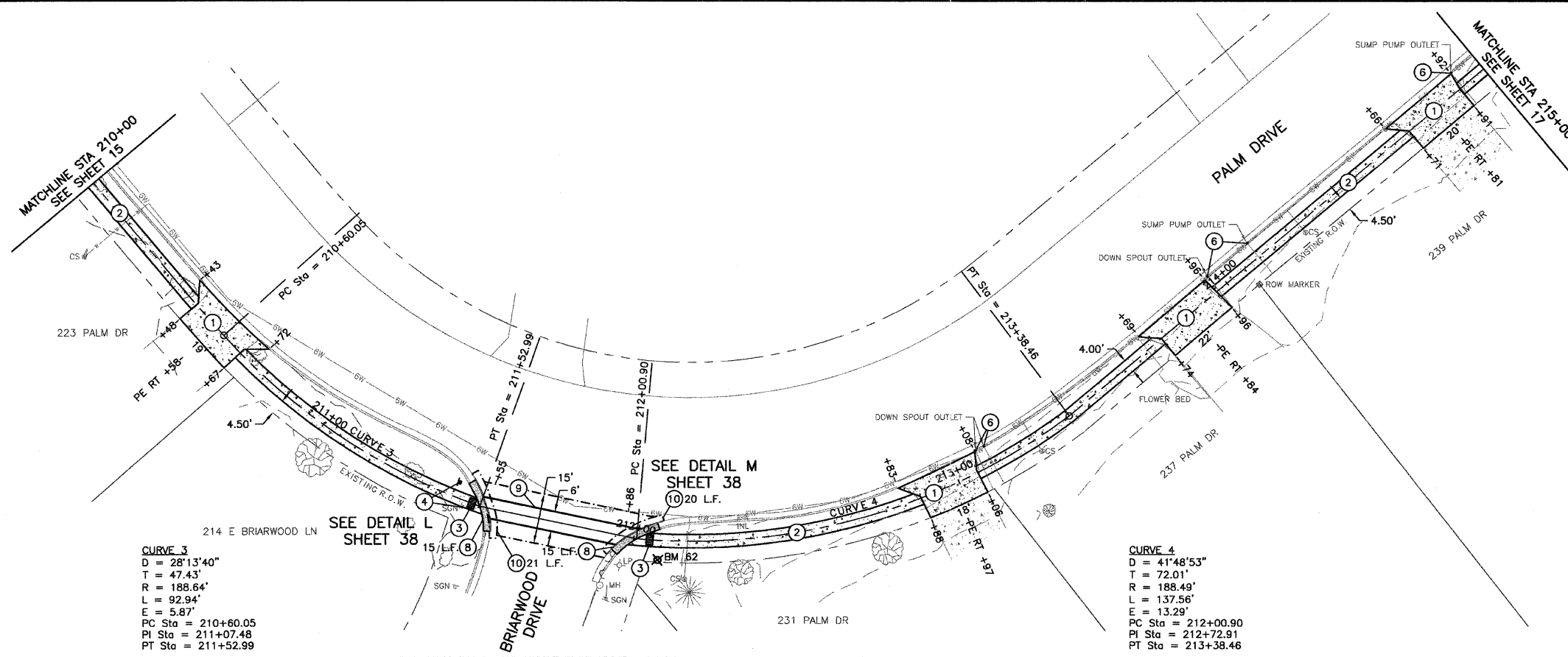
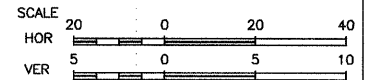
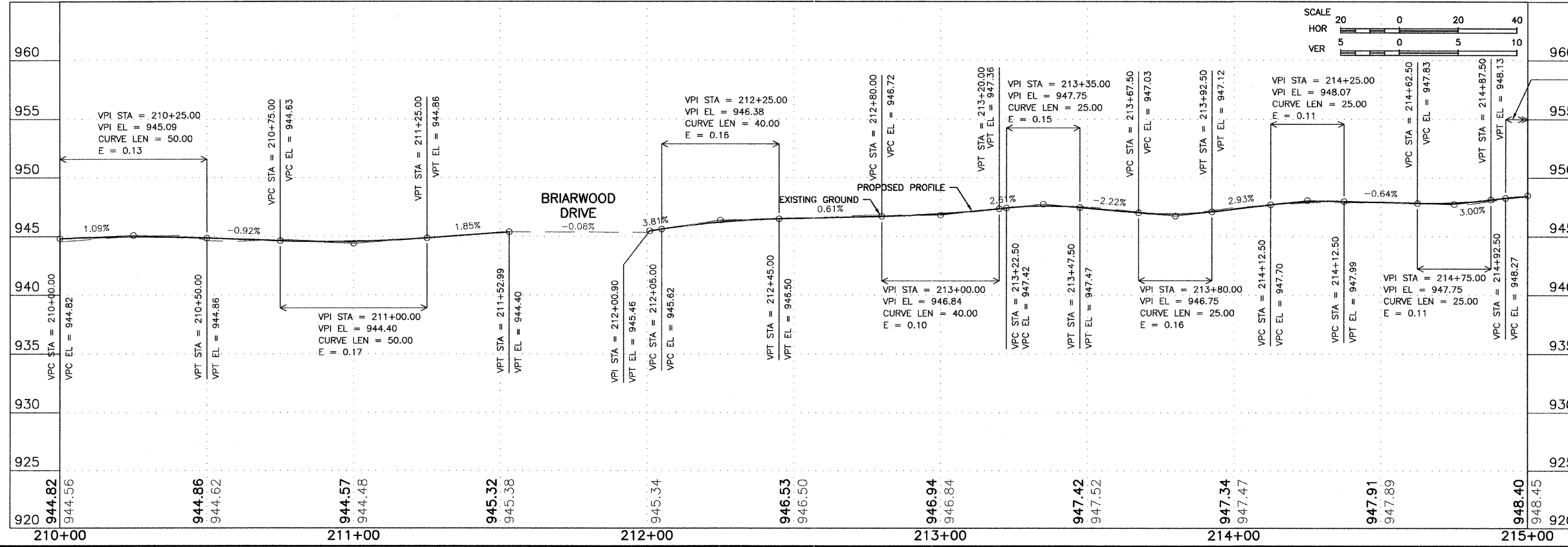


- KEY NOTES**
- PCC DRIVEWAY, 7".
  - PCC SIDEWALK, 5".
  - ADA DETECTABLE WARNING, WITH TYPE A RAMP.
  - SIGN TO BE REMOVED AND RELOCATED.
  - DOMESTIC WATER SERVICE BOX TO BE ADJUSTED.
  - DRAIN OUTLET TO BE ADJUSTED.
  - MANHOLE TO BE ADJUSTED.
  - CONCRETE CURBS & GUTTER REPLACEMENT.
  - EPOXY PAVEMENT MARKING.
  - INC. HMA SURFACING, 5", SUB-BASE GRANULAR MATERIAL, TYPE A, 12".
  - HOT-MIX ASPHALT SURFACE REMOVAL, 2". CONTRACTOR TO MILL EXISTING PAVEMENT IN AREA OF CROSSWALK TO ENSURE A MAXIMUM OF 2% SLOPE FOR THE 6' WIDTH OF THE CROSSWALK. AFTER COMPLETION OF MILLING CONTRACTOR SHALL PLACE HOT-MIX ASPHALT SURFACE COURSE, MIX "C", N50, 2" AT A MAXIMUM 2% SLOPE WITHIN THE 6' CROSSWALK.



**CURVE 3**  
D = 28°13'40"  
T = 47.43'  
R = 188.64'  
L = 92.94'  
E = 5.87'  
PC Sta = 210+60.05  
PI Sta = 211+07.48  
PT Sta = 211+52.99

**CURVE 4**  
D = 41°48'53"  
T = 72.01'  
R = 188.49'  
L = 137.56'  
E = 13.29'  
PC Sta = 212+00.90  
PI Sta = 212+72.81  
PT Sta = 213+38.46



VPI STA = 215+00.00  
VPI EL = 948.50  
CURVE LEN = 15.00  
E = 0.10

BM 63 - CONTROL POINT REBAR - ELEV. 939.10

**FEHR-GRAHAM & ASSOCIATES, LLC**  
ENGINEERING AND SCIENCE CONSULTANTS  
FREEPORT, IL ROCKFORD, IL ROCHELLE, IL SPRINGFIELD, IL MONROE, WI  
ILLINOIS DESIGN FIRM NO. 184-003525  
© 2010 FEHR-GRAHAM & ASSOCIATES

OWNER/DEVELOPER:  
VILLAGE OF LENA  
122 EAST MAIN STREET  
P.O. BOX 607  
LENA, ILLINOIS 61048

PROJECT AND LOCATION:  
SAFE ROUTES  
TO SCHOOL PROGRAM

DRAWN BY: B.C.  
APPROVED BY: P.E.  
DATE: 09/15/10  
SCALE: AS NOTED

REVISIONS		
REV. NO.	DESCRIPTION	DATE
2	REVISIONS PER IDOT REVIEW	12/03/10
3	REVISIONS PER IDOT REVIEW	05/28/11
4	REVISIONS PER IDOT REQUIREMENTS	09/23/11
5	REVISIONS PER IDOT REQUIREMENTS	01/13/12

DRAWING:  
PALM DRIVE SIDEWALK PLAN & PROFILE  
STA 210+00 - STA 215+00

JOB NUMBER:  
10-138  
SHEET NUMBER:  
16 of 41