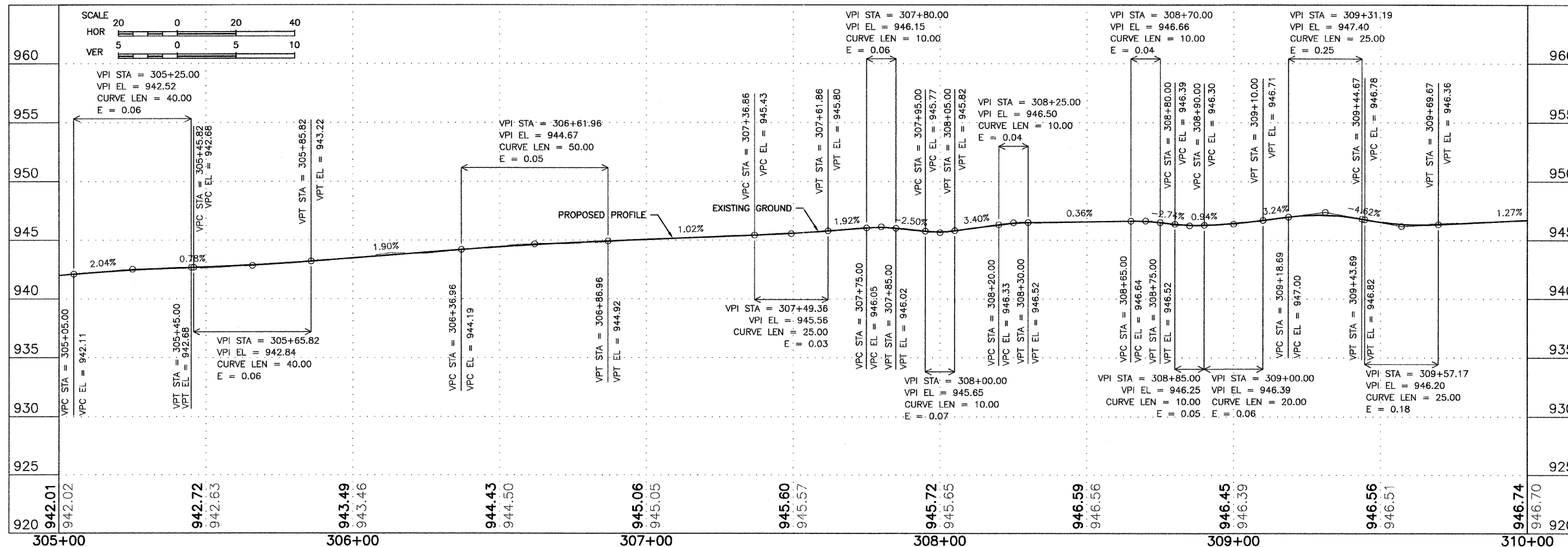
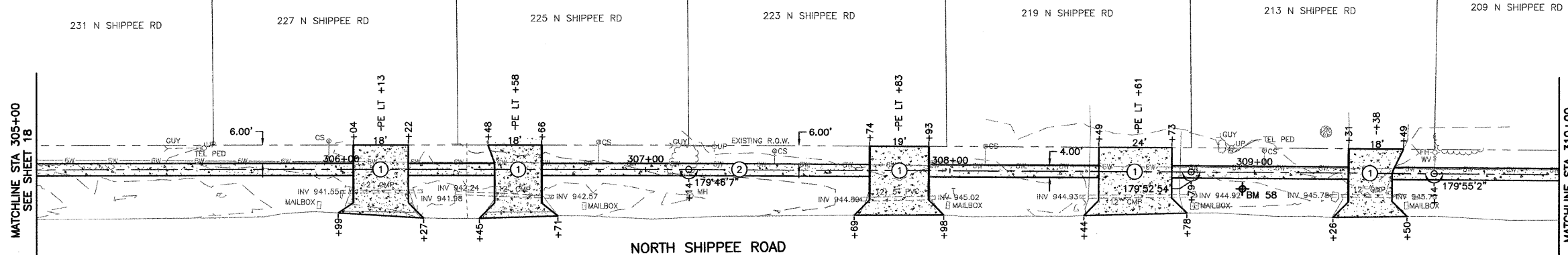


**KEY NOTES**

1. PCC DRIVEWAY, 7".
2. PCC SIDEWALK, 5".
3. ADA DETECTABLE WARNING, WITH TYPE A RAMP.
4. SIGN TO BE REMOVED AND RELOCATED.
5. DOMESTIC WATER SERVICE BOX TO BE ADJUSTED.
6. DRAIN OUTLET TO BE ADJUSTED.
7. MANHOLE TO BE ADJUSTED.
8. CONCRETE CURB & GUTTER REPLACEMENT.
9. EPOXY PAVEMENT MARKING.
10. INC. HMA SURFACING, 5", SUB-BASE GRANULAR MATERIAL, TYPE A, 12".



BM 58 - CONTROL POINT REBAR - ELEV. 945.70

**FEHR-GRAHAM & ASSOCIATES, LLC**  
ENGINEERING AND SCIENCE CONSULTANTS  
FREEPORT, IL ROCKFORD, IL ROCHELLE, IL SPRINGFIELD, IL MONROE, WI  
ILLINOIS DESIGN FIRM NO. 184-003525

OWNER/DEVELOPER:  
VILLAGE OF LENA  
122 EAST MAIN STREET  
P.O. BOX 607  
LENA, ILLINOIS 61048

PROJECT AND LOCATION:  
SAFE ROUTES  
TO SCHOOL PROGRAM

DRAWN BY: B.C.  
APPROVED BY: P.E.  
DATE: 09/15/10  
SCALE: AS NOTED

REVISIONS		
REV. NO.	DESCRIPTION	DATE
2	REVISIONS PER IDOT REVIEW	12/03/10
3	REVISIONS PER IDOT REVIEW	05/26/11
5	REVISIONS PER IDOT REQUIREMENTS	01/13/12

DRAWING:  
SHIPPEE ROAD SIDEWALK PLAN & PROFILE  
STA 305+00 - STA 310+00

JOB NUMBER:  
10-138

SHEET NUMBER:  
19 of 41