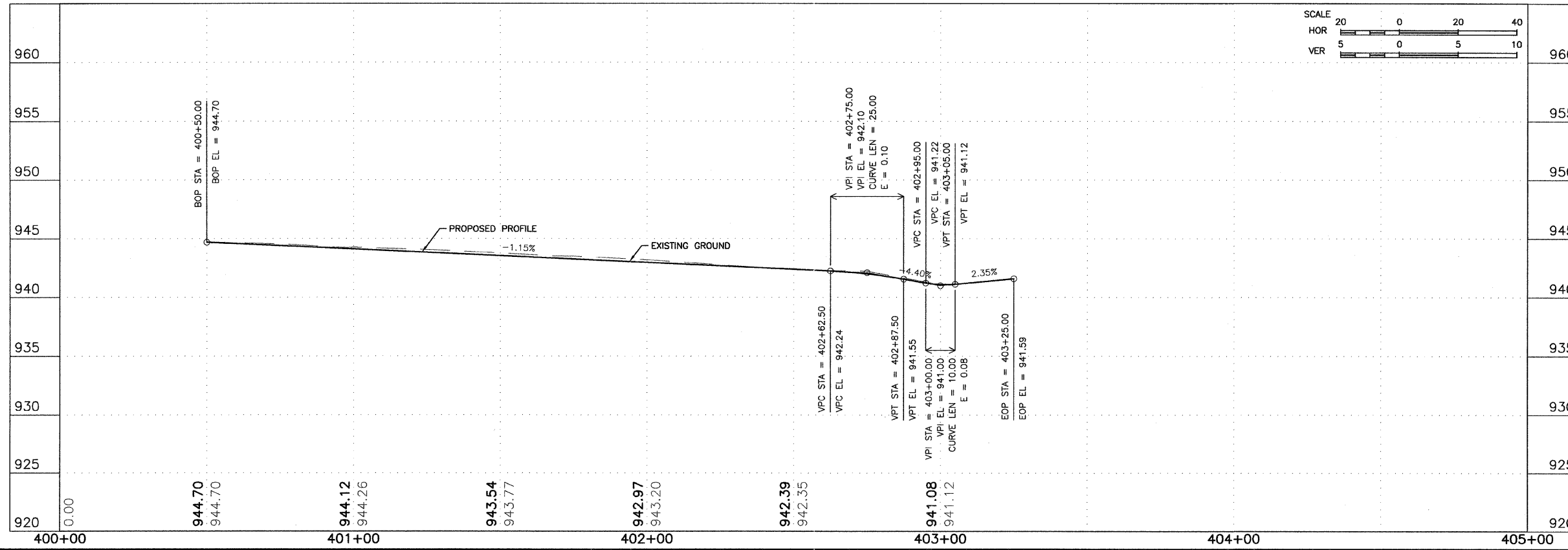
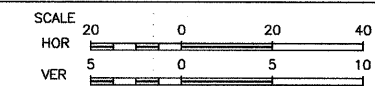
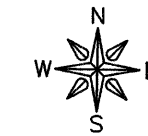
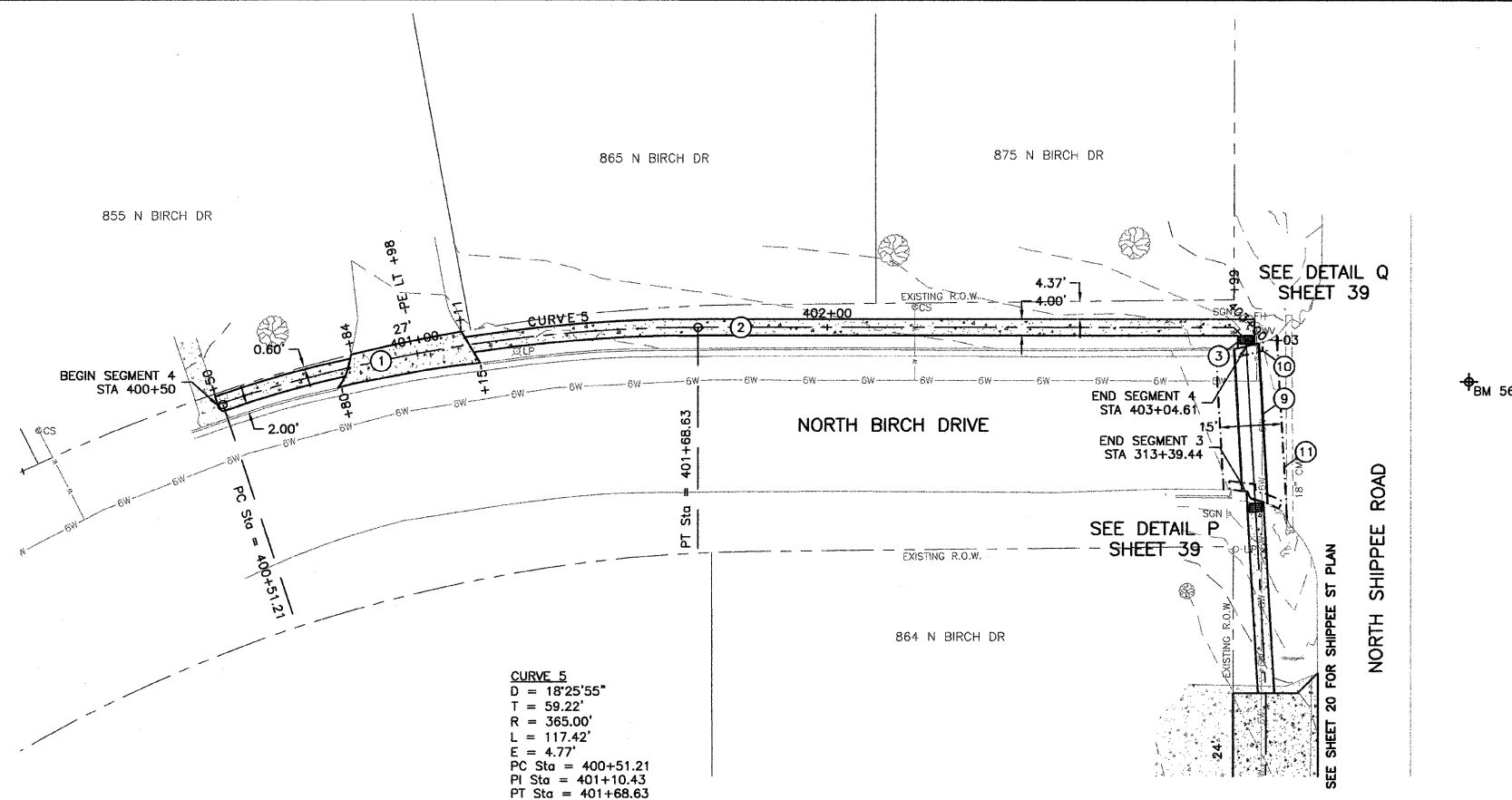


- KEY NOTES**
- PCC DRIVEWAY, 7".
  - PCC SIDEWALK, 5".
  - ADA DETECTABLE WARNING, WITH TYPE A RAMP.
  - SIGN TO BE REMOVED AND RELOCATED.
  - DOMESTIC WATER SERVICE BOX TO BE ADJUSTED.
  - DRAIN OUTLET TO BE ADJUSTED.
  - MANHOLE TO BE ADJUSTED.
  - CONCRETE CURB & GUTTER REPLACEMENT.
  - EPOXY PAVEMENT MARKING.
  - INC. HMA SURFACING, 5", SUB-BASE GRANULAR MATERIAL, TYPE A, 12".
  - HOT-MIX ASPHALT SURFACE REMOVAL, 2". CONTRACTOR TO MILL EXISTING PAVEMENT IN AREA OF CROSSWALK TO ENSURE A MAXIMUM OF 2% SLOPE FOR THE 6' WIDTH OF THE CROSSWALK. AFTER COMPLETION OF MILLING, CONTRACTOR SHALL PLACE HOT-MIX ASPHALT SURFACE COURSE, MIX "C", N50, 2" AT A MAXIMUM 2% SLOPE WITHIN THE 6' CROSSWALK.



BM 56 - CONTROL POINT REBAR - ELEV. 942.65

**FEHR-GRAHAM & ASSOCIATES, LLC**  
ENGINEERING AND SCIENCE CONSULTANTS  
FREEPORT, IL ROCKFORD, IL ROCHELLE, IL SPRINGFIELD, IL MONROE, WI  
ILLINOIS DESIGN FIRM NO. 184-003525  
© 2010 FEHR-GRAHAM & ASSOCIATES

OWNER/DEVELOPER:  
VILLAGE OF LENA  
122 EAST MAIN STREET  
P.O. BOX 607  
LENA, ILLINOIS 61048

PROJECT AND LOCATION:  
SAFE ROUTES  
TO SCHOOL PROGRAM

DRAWN BY: B.C.  
APPROVED BY: P.E.  
DATE: 09/15/10  
SCALE: AS NOTED

| REVISIONS |                                 |          |
|-----------|---------------------------------|----------|
| REV. NO.  | DESCRIPTION                     | DATE     |
| 3         | REVISIONS PER IDOT REVIEW       | 05/28/11 |
| 5         | REVISIONS PER IDOT REQUIREMENTS | 01/13/12 |

DRAWING:  
BIRCH DRIVE SIDEWALK PLAN & PROFILE  
STA 400+00 - STA 405+00

JOB NUMBER:  
10-138

SHEET NUMBER:  
21 of 41