

**GENERAL NOTES**

1. THE THICKNESS OF BITUMINOUS MIXTURES SHOWN ON THE PLANS ARE THE NOMINAL THICKNESS. DEVIATIONS FROM THE NOMINAL THICKNESS WILL BE PERMITTED WHEN SUCH DEVIATIONS OCCUR DUE TO IRREGULARITIES IN THE EXISTING SURFACE OR BASE ON WHICH THE BITUMINOUS MIXTURE IS PLACED.
2. THE ENGINEER WILL BE THE SOLE JUDGE CONCERNING CURING TIME FOR THE VARIOUS BITUMINOUS LIFTS.
3. SEEDING SHALL NOT BE PERMITTED AT ANY TIME WHEN THE GROUND IS FROZEN, WET OR IN AN UNTILLABLE CONDITION. LOCATIONS TO BE SEEDED WILL BE DETERMINED BY THE ENGINEER.
4. ANY REFERENCE TO A STANDARD IN THESE PLANS SHALL BE INTERPRETED TO MEAN THE EDITION AS INDICATED BY THE SUBNUMBER LISTED ON THE INDEX OF SHEETS OR THE COPY OF THE STANDARD INCLUDED IN THESE PLANS.
5. THE LOCATIONS OF EXISTING WATERMAIN, GAS MAIN, SEWERS, ELECTRIC POWER LINES, TELEPHONE LINES AND OTHER UTILITIES AS SHOWN ON THE PLANS ARE BASED ON THE BEST INFORMATION AVAILABLE, BUT THEY ARE NOT GUARANTEED. ALL UTILITY LOCATIONS SHOWN ARE SUPPLIED BY THE UTILITY COMPANIES. IT IS THE CONTRACTOR'S RESPONSIBILITY TO ASCERTAIN THEIR EXACT LOCATION FROM THE UTILITY COMPANIES AND BY FIELD INSPECTION. IT SHALL BE THE RESPONSIBILITY OF THE CONTRACTOR TO PROTECT ALL EXISTING UTILITIES.
6. ENGLISH UNITS OF MEASUREMENT SHALL GOVERN OVER AND SUPERCEDE ANY METRIC UNITS SHOWN IN THIS CONTRACT. WHERE INCLUDED, METRIC UNITS ARE FOR INFORMATION ONLY.
7. PROVIDE POSITIVE DRAINAGE AT ALL TIMES WITHIN THE CONSTRUCTION AREA.
8. EROSION CONTROL FEATURES AS NEEDED SHALL BE INCORPORATED INTO THE CONSTRUCTION AT THE EARLIEST POSSIBLE TIME TO LIMIT EROSION AND STREAM POLLUTION AND SHALL BE MAINTAINED UNTIL ACCEPTANCE OF THE PROJECT. THIS WORK SHALL BE INCLUDED IN THE CONTRACT UNIT PRICE FOR PERIMETER EROSION BARRIER AND INLET AND PIPE PROTECTION.
9. THE CONTRACTOR SHALL NOTIFY THE ENGINEER IMMEDIATELY IF ANY DISCREPANCIES ARE ENCOUNTERED BETWEEN THE PLANS AND SPECIFICATIONS AND THE EXISTING FIELD CONDITIONS.
10. ALL MATERIALS, LABOR, AND EQUIPMENT REQUIRED TO FURNISH AND INSTALL THE PCC DECK BEAMS AS SHOWN ON THE PLANS SHALL BE INCLUDED IN THE CONTRACT UNIT PRICE FOR PRECAST, PRESTRESSED CONCRETE DECK BEAMS. THIS SHALL INCLUDE PORTLAND CEMENT FAIRING COURSE AS REQUIRED.

11. THE CONTRACTOR MUST TAKE EXTREME CARE IN ALL CONTRACT WORK, ESPECIALLY REMOVAL AND REPLACEMENT OF THE BRIDGE ABUTMENTS AND INSTALLATION OF THE STORM MANHOLE AT STA. 9+35, 20' LT TO AVOID DAMAGING THE 42" RCP SEWER PIPE. SHOULD THE PIPE BE DAMAGED, IT MUST BE REPAIRED TO RRWRD'S SATISFACTION WITH ALL ASSOCIATED COSTS, INCLUDING BYPASS PUMPING, TO BE BORNE BY THE CONTRACTOR AND NOT RRWRD.

GARDEN PLAIN AVENUE		
MIXTURE USES:	SURFACE	BINDER
PG:	PG 64-22	PG 64-22
DESIGN AIR VOIDS	4.0% AT N50	4.0% AT N50
MIXTURE COMPOSITION (GRADATION MIXTURE)	IL 9.5 OR 12.5	IL 19.0
FRICTION AGGREGATE	MIX C	NA
20 YEAR ESAL	NA	NA
MIX UNIT WEIGHT	112 LB/SY/1IN	

**SUMMARY OF QUANTITIES**

CODE NO.	ITEM	UNIT	QUANTITY
20100110	TREE REMOVAL 6" - 15"	UNIT	40
20200100	EARTH EXCAVATION	CY	103
20400100	BORROW EXCAVATION	CY	72
20700220	POROUS GRANULAR EMBANKMENT	CY	46.1
20900110	POROUS GRANULAR BACKFILL	CY	47
21101615	TOPSOIL FURNISHED AND PLACED, 4"	SY	485
* 25000110	SEEDING, CLASS 1A	ACRE	0.10
25000400	NITROGEN FERTILIZER NUTRIENT	LB	9
25000500	PHOSPHORUS FERTILIZER NUTRIENT	LB	9
25000600	POTASSIUM FERTILIZER NUTRIENT	LB	9
25100115	MULCH METHOD 2	AC	0.10
28000400	PERIMETER EROSION BARRIER	FOOT	354
28000500	INLET AND PIPE PROTECTION	EACH	4
35100600	AGGREGATE BASE COURSE TYPE B, 4"	SY	32
35102400	AGGREGATE BASE COURSE TYPE B, 12"	SY	605
40600100	BITUMINOUS MATERIALS (PRIME COAT)	GAL	210
40603080	HOT MIX ASPHALT BINDER COURSE, IL-19.0, N50	TON	72
40603310	HOT MIX ASPHALT SURFACE COURSE, MIX "C", N50	TON	44
42300200	PCC DRIVEWAY PAVEMENT, 6"	SY	32
* 42400100	PCC SIDEWALK, 4"	SF	2085
44000100	PAVEMENT REMOVAL	SY	593
44000500	CONCRETE CURB AND GUTTER REMOVAL	FOOT	371
44000600	SIDEWALK REMOVAL	SF	664
44213200	SAW CUTS	FOOT	100
50100100	REMOVAL OF EXISTING STRUCTURES	EACH	1
50102400	CONCRETE REMOVAL	CY	27.1
50200100	STRUCTURE EXCAVATION	CY	329
50300225	CONCRETE STRUCTURES	CY	159
50300255	CONCRETE SUPERSTRUCTURES	CY	33.3
50300260	BRIDGE DECK GROOVING	SY	217
50300280	CONCRETE ENCASEMENT	CY	8.4
50300300	PROTECTIVE COAT	SY	330
50400305	PRECAST PRESTRESSED CONCRETE DECK BEAM (17" DEPTH)	SF	2707
50800205	REINFORCEMENT BARS, EPOXY COATED	LB	25884
50800515	BAR SPLICERS	EACH	166
50900805	PEDESTRIAN RAILING	FOOT	136
51200958	FURNISHING METAL SHELL PILES, 14"x0.250"	FOOT	1380
51202305	DRIVING PILES	FOOT	1380
51203200	TEST PILE METAL SHELLS	EACH	3
51500100	NAME PLATES	EACH	1
550A0070	STORM SEWERS, CLASS A, TYPE 1, 15"	FOOT	24
550A0090	STORM SEWERS, CLASS A, TYPE 1, 18"	FOOT	18
55100700	STORM SEWER REMOVAL, 15"	FOOT	30
55100900	STORM SEWER REMOVAL, 18"	FOOT	18
60218400	MANHOLE, TYPE A, 4' DIA., TYPE 1 FRAME & CL. LID	EACH	2
* 60604400	COMBINATION CONC. C&G, TYPE B-6.18	FOOT	356
67100100	MOBILIZATION	LSUM	1
* X5030305	CONCRETE WEARING SURFACE, 5"	SY	301
* X7010216	TRAFFIC CONTROL AND PROTECTION, SPECIAL	L SUM	1
* Z0013798	CONSTRUCTION LAYOUT	L SUM	1
* Z0073002	TEMPORARY SOIL RETENTION SYSTEM	SF	504
* Z0077700	WOOD FENCE TO BE REMOVED AND RE-ERECTED	FOOT	56

\* SPECIAL PROVISION  
 ▲ SPECIALTY ITEMS



USER NAME =	DESIGNED - JTT	REVISED - 2/9/12
PLOT SCALE =	DRAWN - SMG	REVISED - 3/29/12 ▲
PLOT DATE = 2/9/12	CHECKED - CTB	REVISED -
	DATE - 12/12/11	REVISED -

**CITY OF LOVES PARK  
 GARDEN PLAIN AVE. BRIDGE**

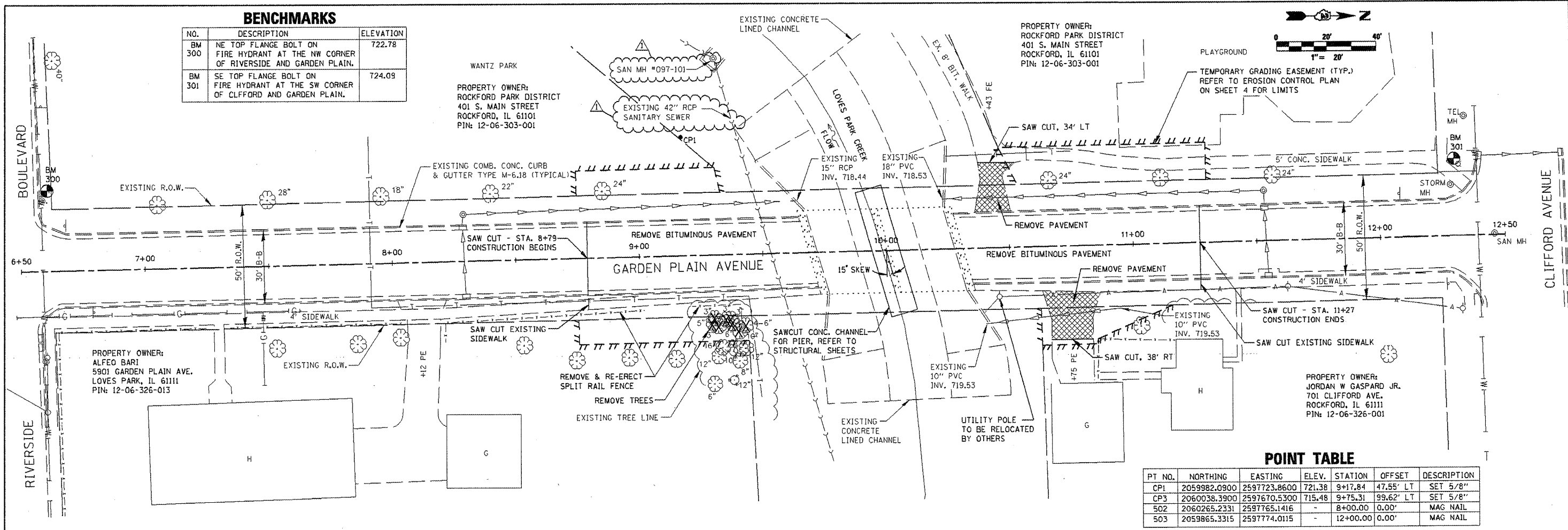
**GENERAL NOTES & QUANTITIES**

SCALE: SHEET NO. OF SHEETS STA. TO STA.

F.A. RTE.	SECTION	COUNTY	TOTAL SHEETS	SHEET NO.
	08-00069-00-BR	WINNEBAGO	21	2
CONTRACT NO. 85547			ILLINOIS FED. AID PROJECT	

**BENCHMARKS**

NO.	DESCRIPTION	ELEVATION
BM 300	NE TOP FLANGE BOLT ON FIRE HYDRANT AT THE NW CORNER OF RIVERSIDE AND GARDEN PLAIN.	722.78
BM 301	SE TOP FLANGE BOLT ON FIRE HYDRANT AT THE SW CORNER OF CLIFFORD AND GARDEN PLAIN.	724.09

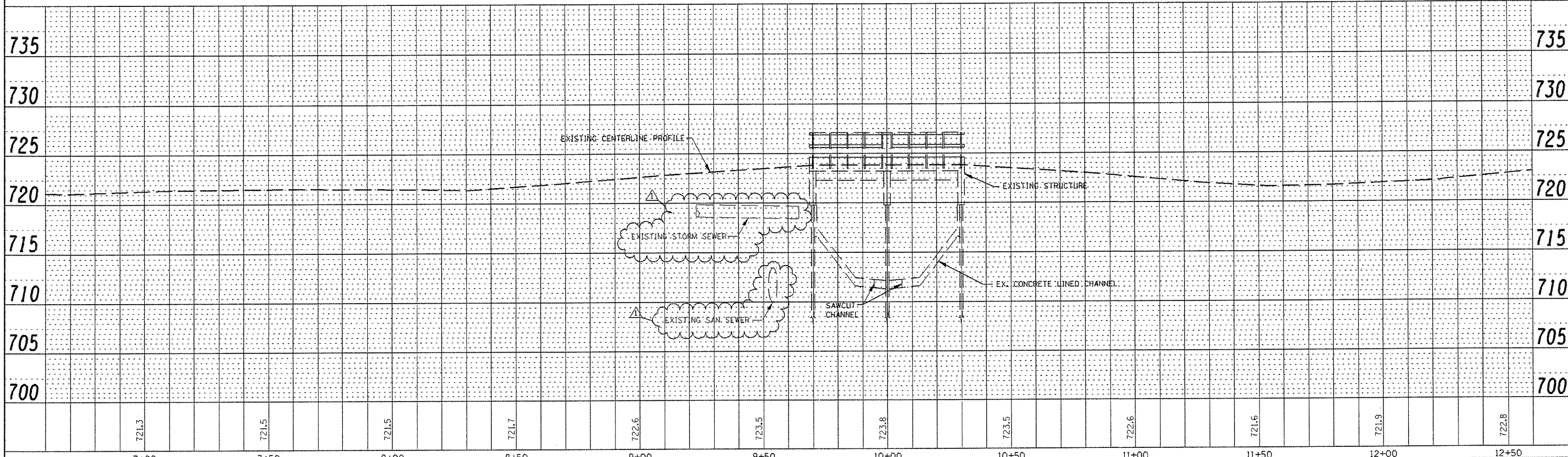


**POINT TABLE**

PT NO.	NORTHING	EASTING	ELEV.	STATION	OFFSET	DESCRIPTION
CP1	2059982.0900	2597723.8600	721.38	9+17.84	47.55' LT	SET 5/8"
CP3	2060038.3900	2597670.5300	715.48	9+75.31	99.62' LT	SET 5/8"
502	2060265.2331	2597765.1416	-	8+00.00	0.00'	MAG NAIL
503	2059865.3315	2597774.0115	-	12+00.00	0.00'	MAG NAIL

PLAN  
 DATE  
 BY  
 CHECKED  
 ALIGNED  
 CHECKED  
 FILE NAME

PROFILE  
 DATE  
 BY  
 CHECKED  
 GRADES  
 CHECKED  
 STRUCTURE  
 NOTATIONS  
 CPTD



7+00	7+50	8+00	8+50	9+00	9+50	10+00	10+50	11+00	11+50	12+00	12+50
721.3	721.5	721.5	721.7	722.6	723.5	723.8	723.5	722.6	721.6	721.9	722.8

**McClure Engineering Associates, Inc.**  
 7202 Angus Drive  
 Rockford, Illinois 61107-5837  
 (815) 398-2332 Fax (815) 398-2498  
 Design Firm License: Illinois 18-002816  
 Copyright 2012 By McClure Engineering Associates, Inc.

USER NAME -	DESIGNED - JTT	REVISED - 3/29/12
PLOT SCALE = 1"=40'	DRAWN - SMG	REVISED -
PLOT DATE = 12/12/11	CHECKED - CTB	REVISED -
	DATE - 12/12/11	REVISED -

**CITY OF LOVES PARK  
 GARDEN PLAIN AVE. BRIDGE**

**DEMOLITION PLAN**  
 SCALE: 1"=20'  
 SHEET NO. 1 OF 1 SHEETS  
 STA. 6+60 TO STA. 12+60

F.A. RTE.	SECTION	COUNTY	TOTAL SHEETS	SHEET NO.
	08-00069-00-BR	WINNEBAGO	21	5
CONTRACT NO. 85547			ILLINOIS FED. AID PROJECT	

**BENCHMARKS**

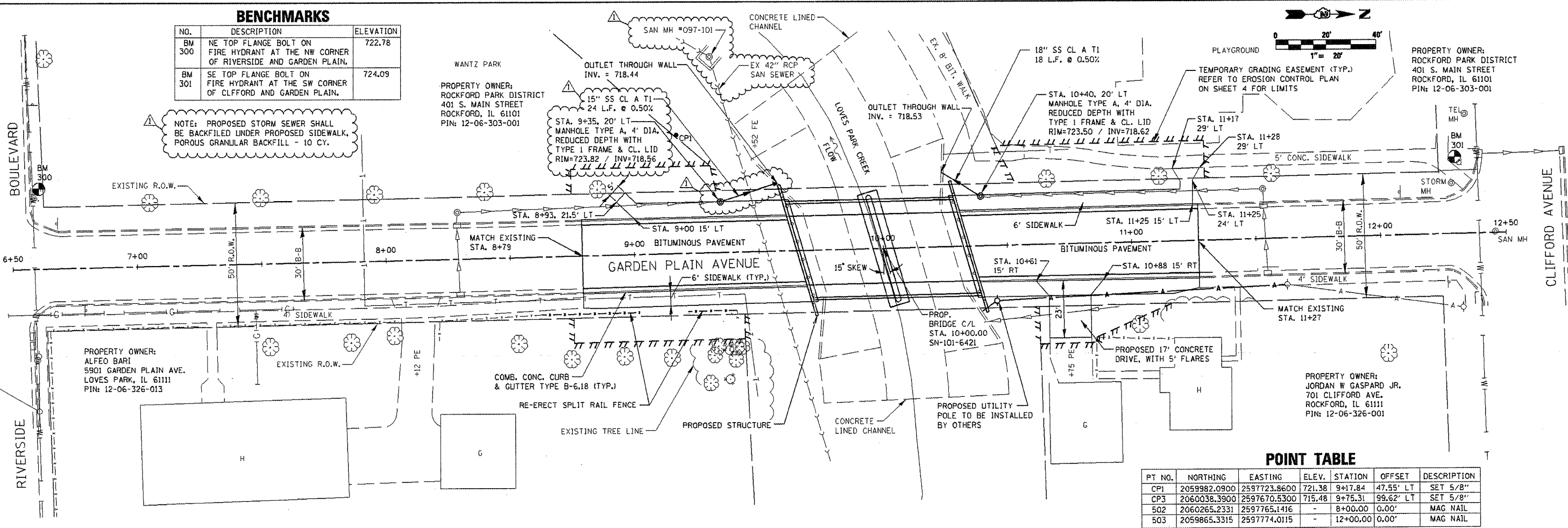
NO.	DESCRIPTION	ELEVATION
BM 300	NE TOP FLANGE BOLT ON FIRE HYDRANT AT THE NW CORNER OF RIVERSIDE AND GARDEN PLAIN.	722.78
BM 301	SE TOP FLANGE BOLT ON FIRE HYDRANT AT THE SW CORNER OF CLIFFORD AND GARDEN PLAIN.	724.09

NOTE: PROPOSED STORM SEWER SHALL BE BACKFILLED UNDER PROPOSED SIDEWALK. POROUS GRANULAR BACKFILL - 10 CY.

PROPERTY OWNER: ROCKFORD PARK DISTRICT  
401 S. MAIN STREET  
ROCKFORD, IL 61101  
PIN: 12-06-303-001

PROPERTY OWNER: ALFEO BARI  
5901 GARDEN PLAIN AVE.  
LOVES PARK, IL 61111  
PIN: 12-06-326-013

PROPERTY OWNER: JORDAN W GASPARD JR.  
701 CLIFFORD AVE.  
ROCKFORD, IL 61111  
PIN: 12-06-326-001



**POINT TABLE**

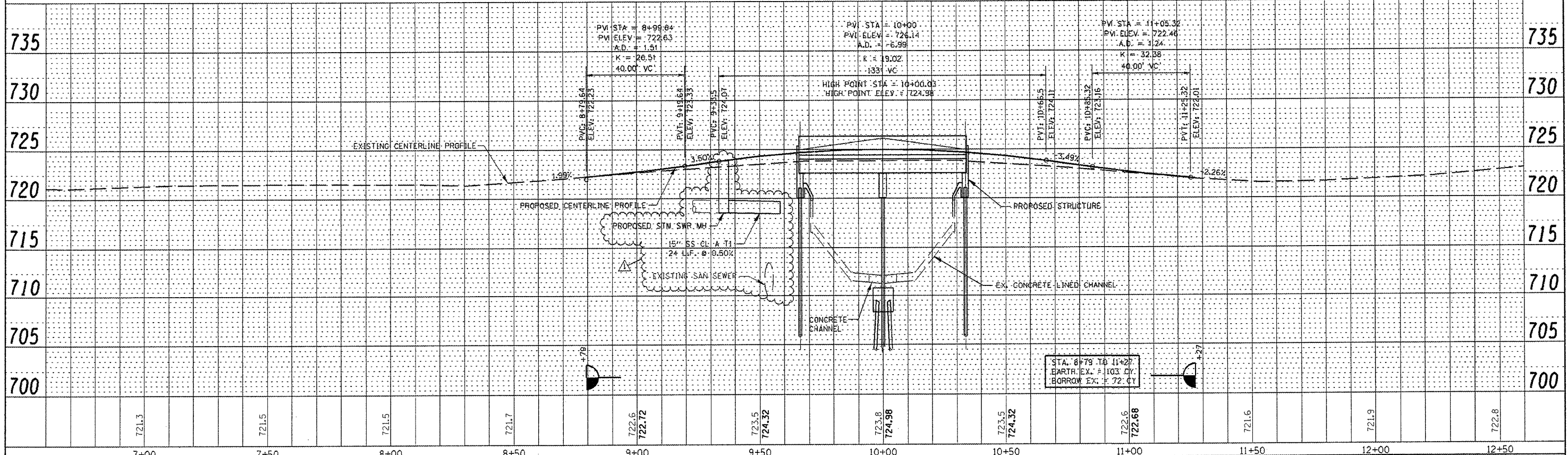
PT NO.	NORTHING	EASTING	ELEV.	STATION	OFFSET	DESCRIPTION
CP1	2059982.0900	2597723.8600	721.38	9+17.84	47.55' LT	SET 5/8"
CP3	2060038.3900	2597670.5300	715.48	9+75.31	99.62' LT	SET 5/8"
502	2060265.2331	2597765.1416	-	8+00.00	0.00'	MAG NAIL
503	2059865.3315	2597774.0115	-	12+00.00	0.00'	MAG NAIL

PLAN

DATE	
BY	
DESIGNED	
DRAWN	
CHECKED	
DATE	

PROFILE

DATE	
BY	
DESIGNED	
DRAWN	
CHECKED	
DATE	



7+00	7+50	8+00	8+50	9+00	9+50	10+00	10+50	11+00	11+50	12+00	12+50
721.3	721.5	721.5	721.7	722.6 722.72	723.5 724.32	723.8 724.98	723.5 724.32	722.6 722.68	721.6	721.9	722.8

**McClure**  
Engineering Associates, Inc.  
7242 Maple Drive, Rockford, Illinois 61107-5637  
(815) 398-2333 Fax (815) 398-2486  
Illinois Professional Engineer License No. 181-022816  
Copyright 2012 by McClure Engineering Associates, Inc.

USER NAME =	DESIGNED - JTT	REVISED - 3/29/12
PLOT SCALE = 1"=40'	DRAWN - SMG	REVISED -
PLOT DATE = 12/12/11	CHECKED - CTB	REVISED -
	DATE - 12/12/11	REVISED -

**CITY OF LOVES PARK  
GARDEN PLAIN AVE. BRIDGE**

**PLAN AND PROFILE**  
SCALE: 1"=20' SHEET NO. 1 OF 1 SHEETS STA. 6+60 TO STA. 12+60

F.A. RTE.	SECTION	COUNTY	TOTAL SHEETS	SHEET NO.
	08-00069-00-BR	WINNEBAGO	21	6
CONTRACT NO. 85547				
ILLINOIS FED. AID PROJECT				