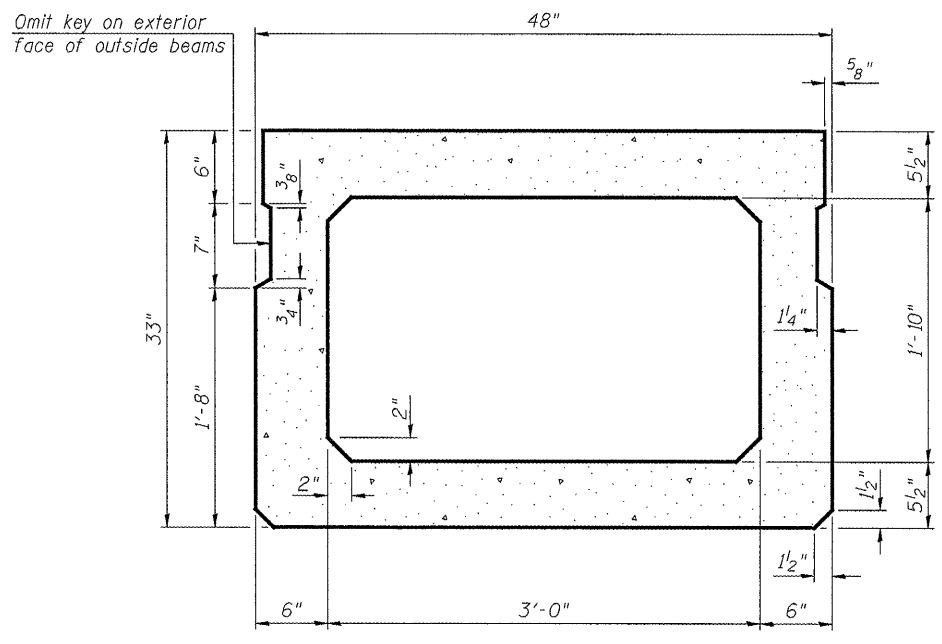
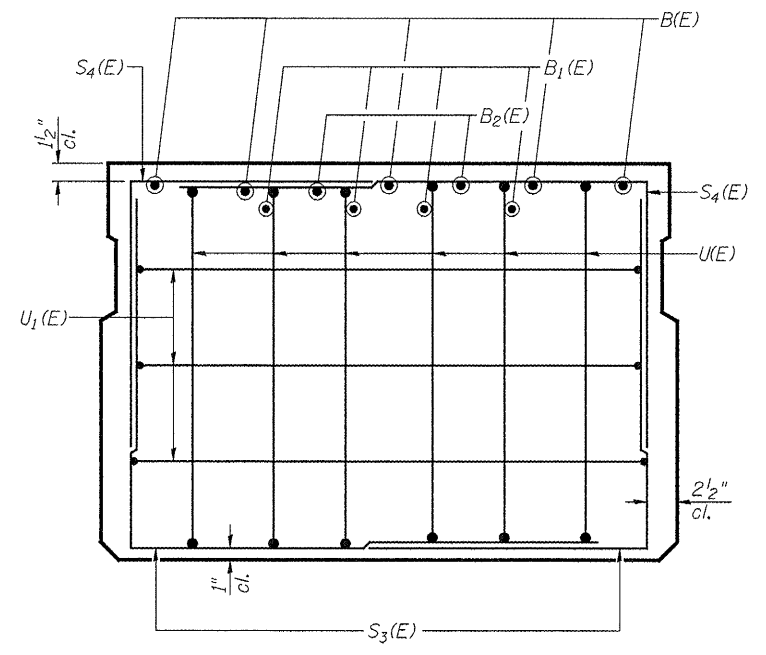


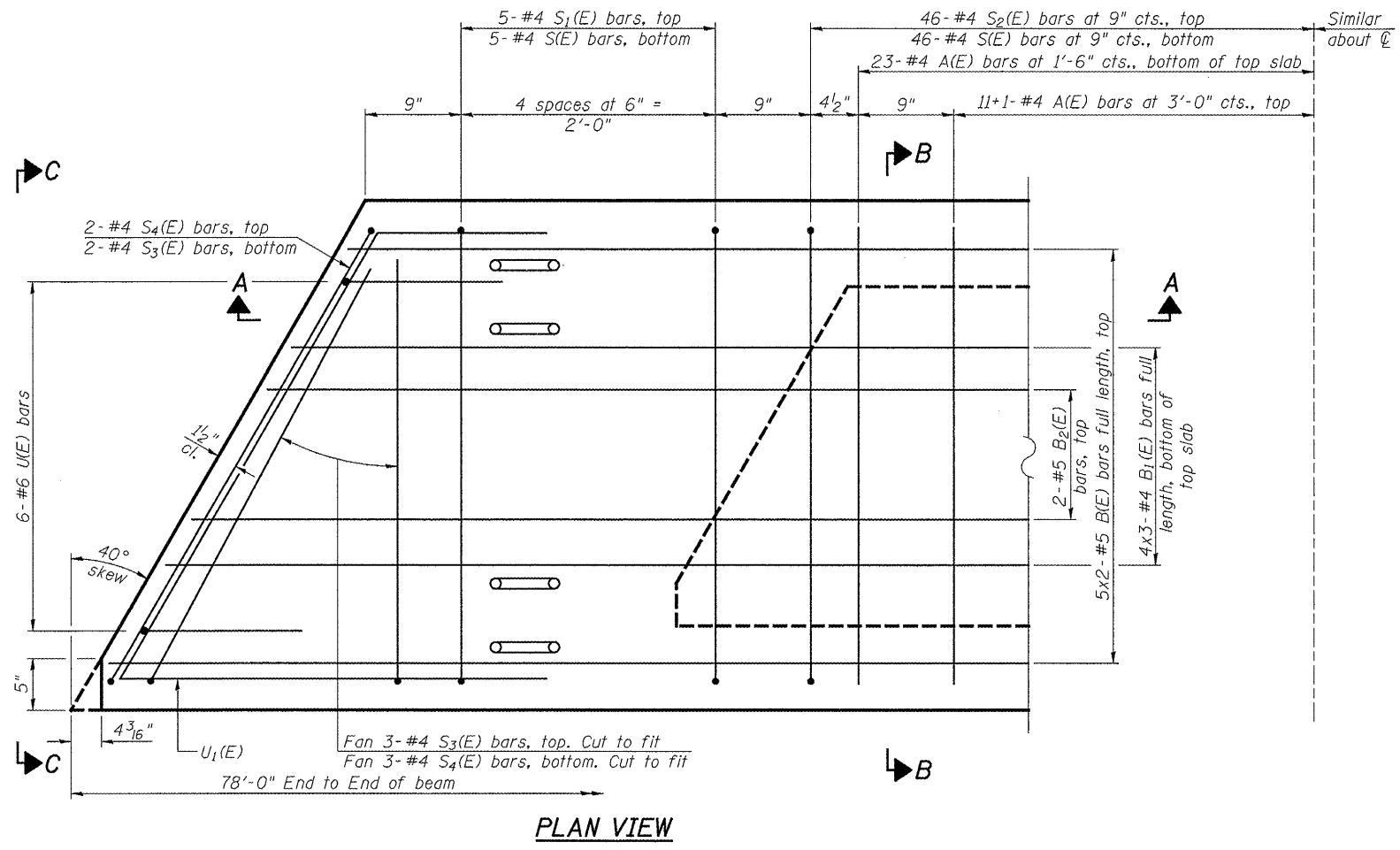
SECTION A-A



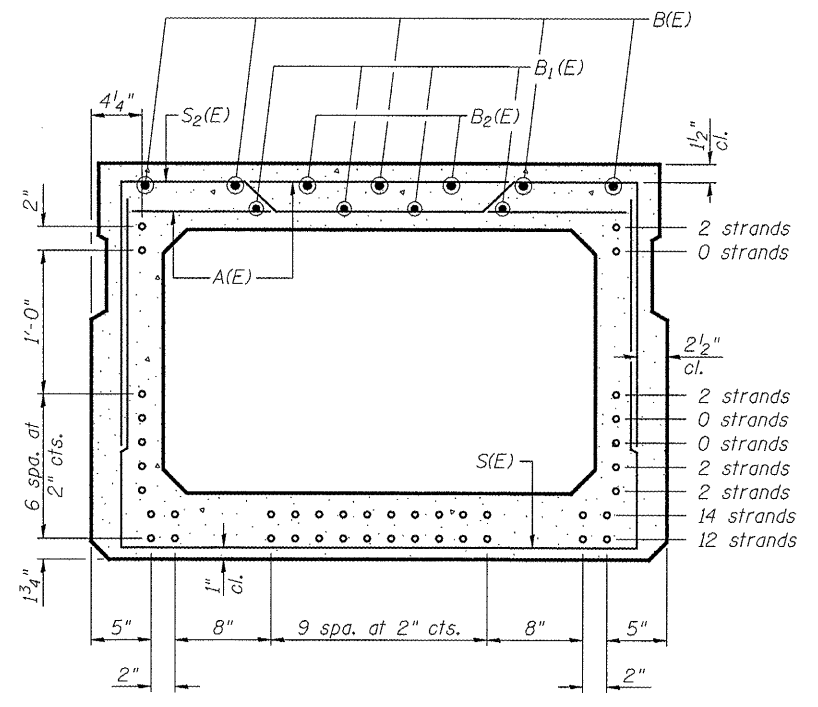
SECTION B-B  
(Showing dimensions)



VIEW C-C



PLAN VIEW



SECTION B-B  
(Showing reinforcement and permissible strand locations)

**NOTE:**  
Place the number of strands specified in each row symmetrically about the centerline of beam in the permissible strand locations shown.

**BAR LIST  
ONE BEAM ONLY**  
(For information only)

Bar	No.	Size	Length	Shape
A(E)	69	#4	3'-7"	—
B(E)	10	#5	40'-1"	—
B1(E)	12	#4	27'-3"	—
B2(E)	4	#5	10'-0"	—
S(E)	102	#4	8'-5"	┌┐
S1(E)	10	#4	7'-3"	┌┐
S2(E)	92	#4	7'-6"	┌┐
S3(E)	10	#4	5'-2"	┌┐
S4(E)	10	#4	4'-11"	┌┐
U(E)	12	#6	5'-0"	┌┐
U1(E)	6	#4	10'-0"	┌┐

**NOTES:**  
See Structural Sheet 9 of 18 for additional details and Bill of Material.  
Spacing of S(E) and S2(E) bars may be adjusted up to 4" in the immediate area of the transverse tie diaphragms to miss the block outs for the transverse ties.

Bars indicated thus 5x2-#5 etc. indicates 5 lines of bars with 2 lengths per line.  
Bars indicated thus 11+1-#4 etc. indicates 11 bars each side of centerline plus 1 additional bar at centerline.

**MINIMUM BAR LAP**  
#4 bar = 2'-0"  
#5 bar = 2'-6"

FILE = S:\PROJECTS\2011\1224D11.Lee-County\DESIGN\STRUCT\Drawings\1224D11\_33r.DeckBeam.dgn

**WILLETT HOPMANN ASSOCIATES INC.**  
ENGINEERING ARCHITECTURE LAND SURVEYING  
809 EAST 2ND STREET, DIXON, IL 61021-0367  
TEL: 815-284-3881 DESIGN: FRM: #184-960918

DESIGNED - BRADLEY KLEINMAIER	REVISED -
CHECKED - BRIAN CONVERSE	REVISED -
DRAWN - RON ALLEN	REVISED -
CHECKED - MEGAN CACKLEY	REVISED -

**LEE COUNTY  
C.H. 12 (KEIGWIN ROAD) OVER GREEN RIVER  
STATION 20+00**

**33" x 48" PPC DECK BEAM  
STRUCTURE NO. 052-3416**  
STRUCTURAL SHEET NO. 8 OF 18 SHEETS

F.A.S. RTE.	SECTION	COUNTY	TOTAL SHEETS	SHEET NO.
1180	11-00318-00-BR	LEE	29	15
WHA# 1224D11			CONTRACT NO. 85557	
ILLINOIS FED. AID PROJECT BRS-1180(003)				