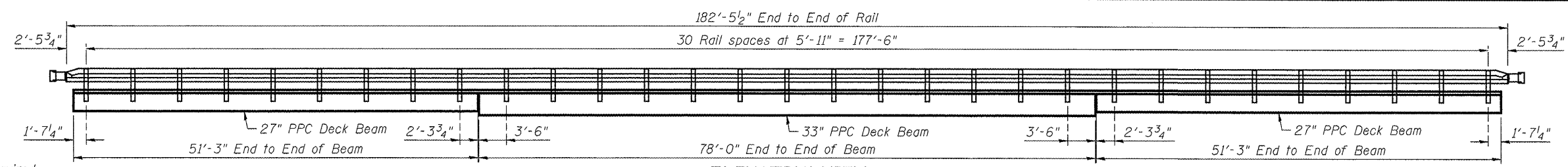
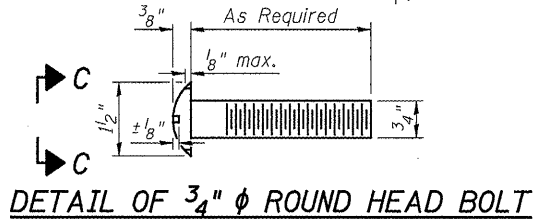


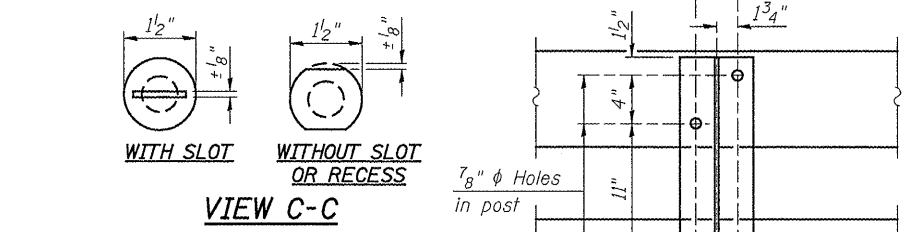
85557



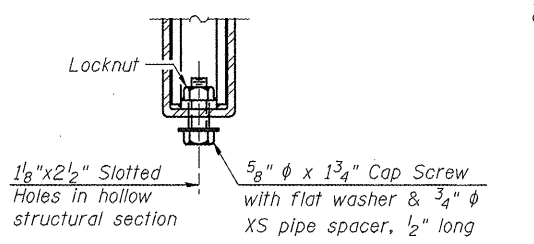
ELEVATION VIEW



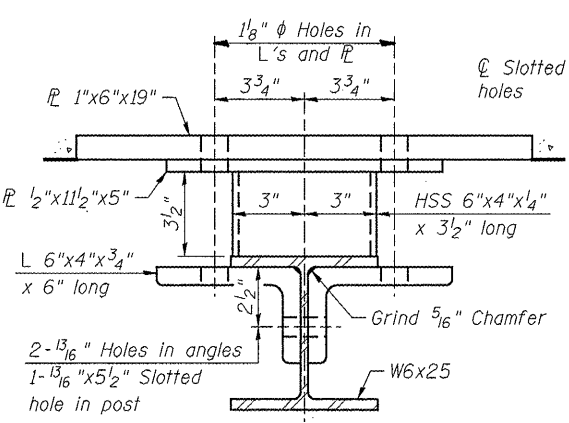
DETAIL OF 3/4" φ ROUND HEAD BOLT



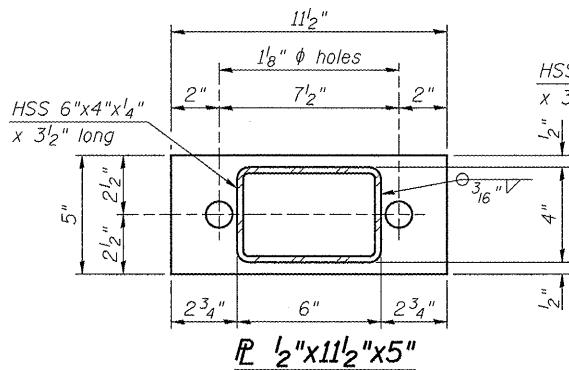
VIEW C-C



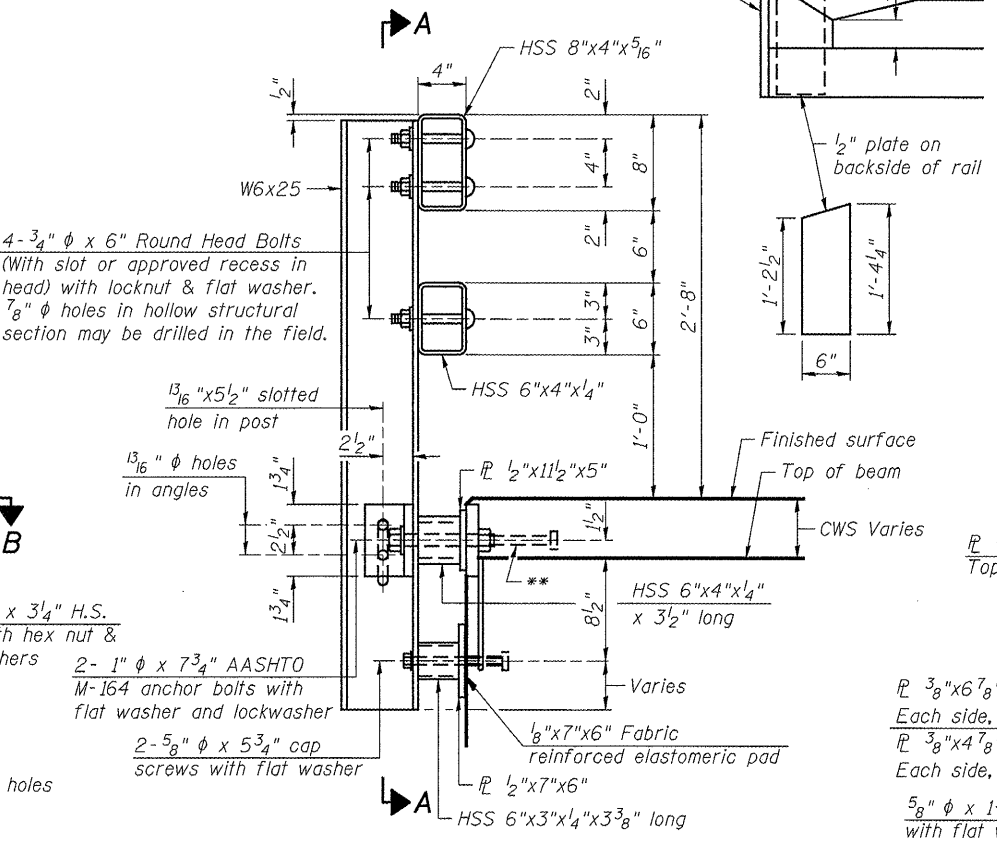
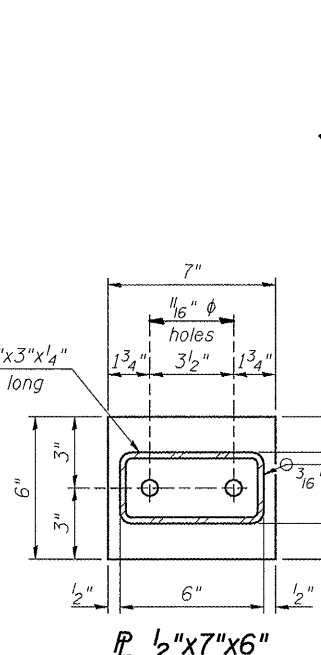
RAIL SPLICE CONNECTION AT EXPANSION JT.



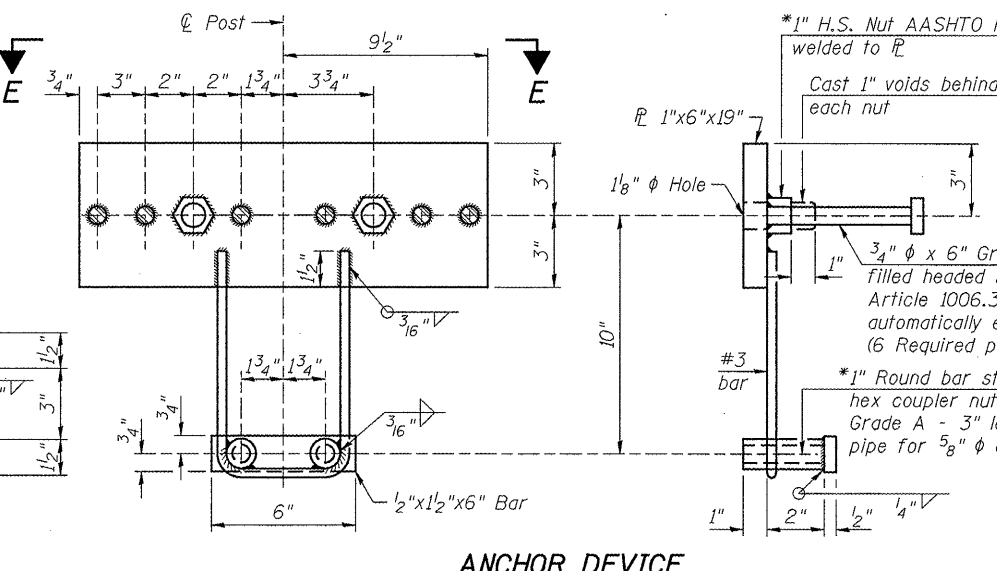
SECTION B-B



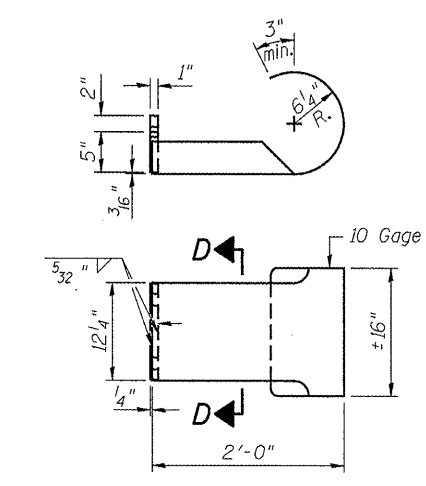
SECTION A-A



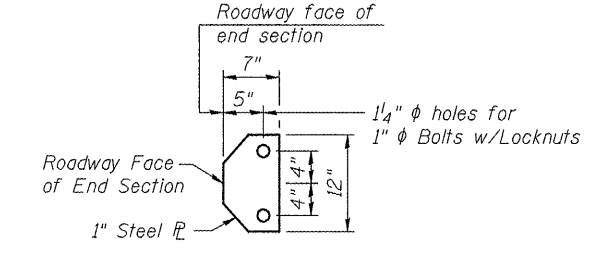
SECTION AT RAIL POST



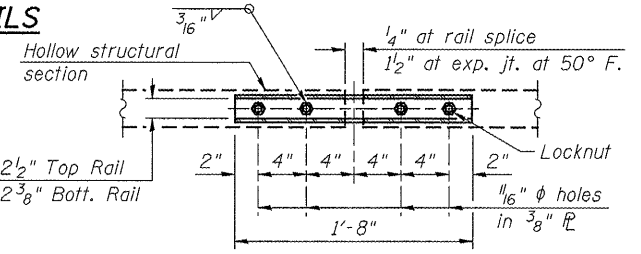
ANCHOR DEVICE



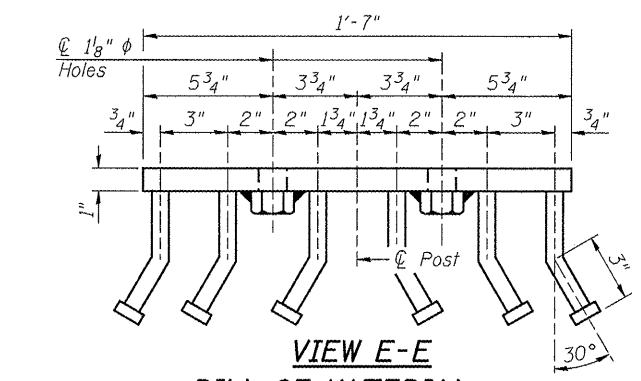
CURLLED END SECTION DETAILS



SECTION D-D



PLAN-BOTT. SPLICE P TYPICAL



VIEW E-E
BILL OF MATERIAL

Item	Unit	Quantity
Steel Railing, Type SM	Foot	365

NOTES:

- All field drilled holes shall be coated with an approved zinc rich paint before erection.
- For multi-span bridges, sufficient 1/4"x6"x1'-2" galvanized steel shims shall be provided to align rail between adjacent spans. Cost included with Steel Railing, Type SM.
- Steel rail elements shall be galvanized according to Article 509.05 of the Standard Specifications.
- * Threaded areas shall be plugged or blocked off during casting of beam. Galvanized after fabrication.
- ** The studs of the anchor devices shall be placed below the top reinforcement bars and the outermost longitudinal reinforcement bar shall be placed directly above the studs of the rail post anchor device.
- *** Cost of Curled End Sections to be included with Steel Railing, Type SM.

WILLET HOPMANN & ASSOCIATES INC.
ENGINEERING ARCHITECTURE LAND SURVEYING
809 EAST 2ND STREET, DIPON, IL 61021-0367
TEL: 815-294-3301 DESIGN FIRM: 0186-009918

DESIGNED - BRADLEY KLEINMAIER	REVISED -
CHECKED - BRIAN CONVERSE	REVISED -
DRAWN - RON ALLEN	REVISED -
CHECKED - MEGAN CACKLEY	REVISED -

LEE COUNTY
C.H. 12 (KEIGWIN ROAD) OVER GREEN RIVER
STATION 20+00

STEEL RAILING, TYPE SM WITH CONCRETE WEARING SURFACE
STRUCTURE NO. 052-3416
STRUCTURAL SHEET NO. 15 OF 18 SHEETS

F.A.S. R.T.E.	SECTION	COUNTY	TOTAL SHEETS	SHEET NO.
1180	11-00318-00-BR	LEE	29	22
WHA# 1224D11			CONTRACT NO. 85557	
ILLINOIS FED. AID PROJECT BRS-1180(003)				