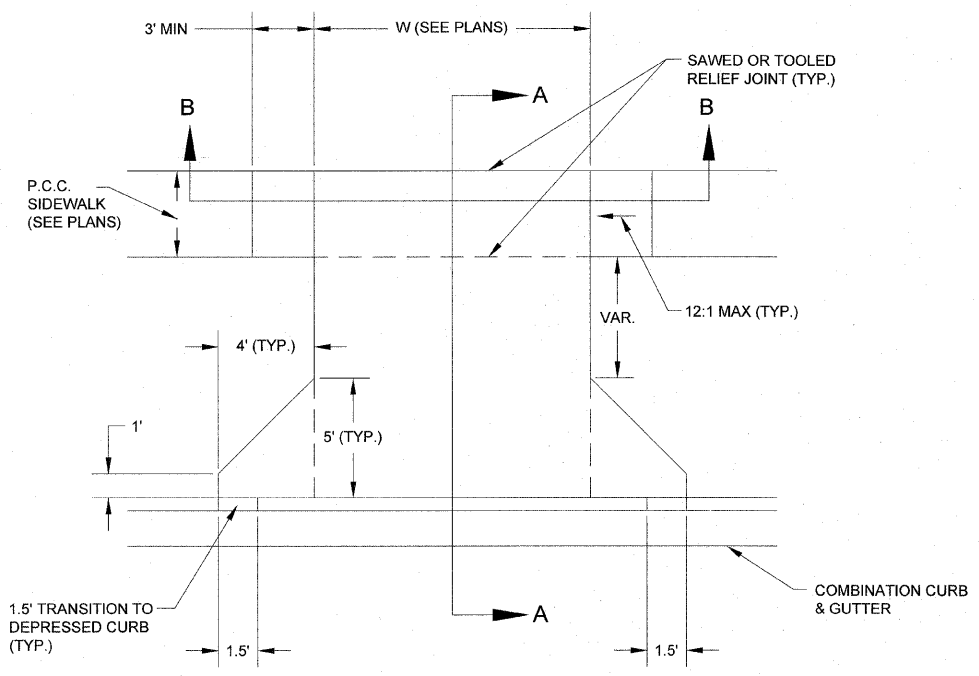
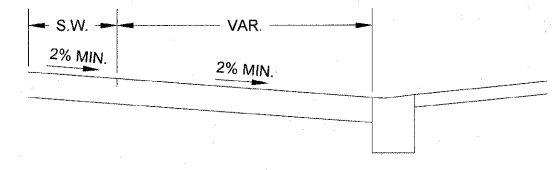


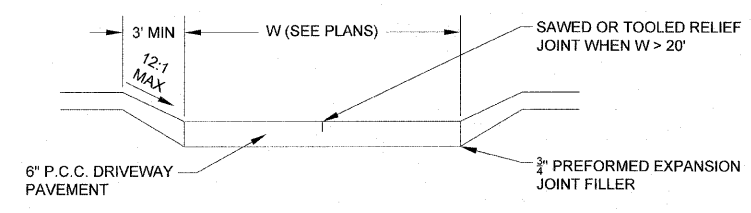
F.A.U. RTE.	SECTION	COUNTY	TOTAL SHEETS	SHEET NO.
6160	10-00090-00-WR	LASALLE	61	3
STA. 0+11.71		TO STA. 52+77.14		
FED. ROAD DIST. NO. 3 ILLINOIS FED. AID PROJECT				



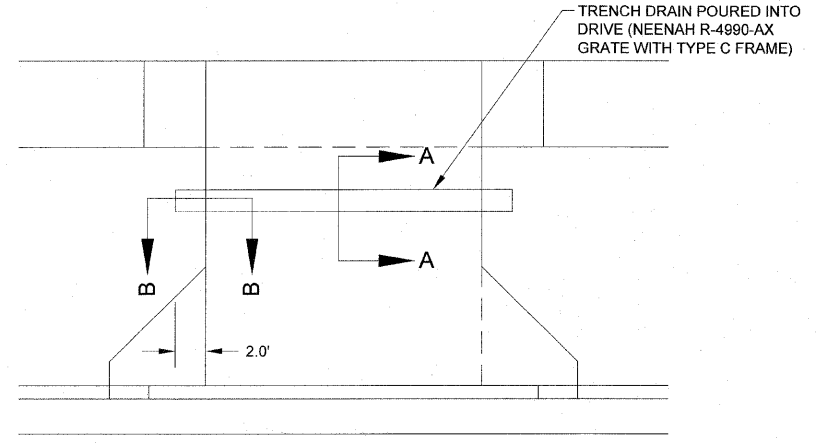
TYPICAL ENTRANCE DETAIL



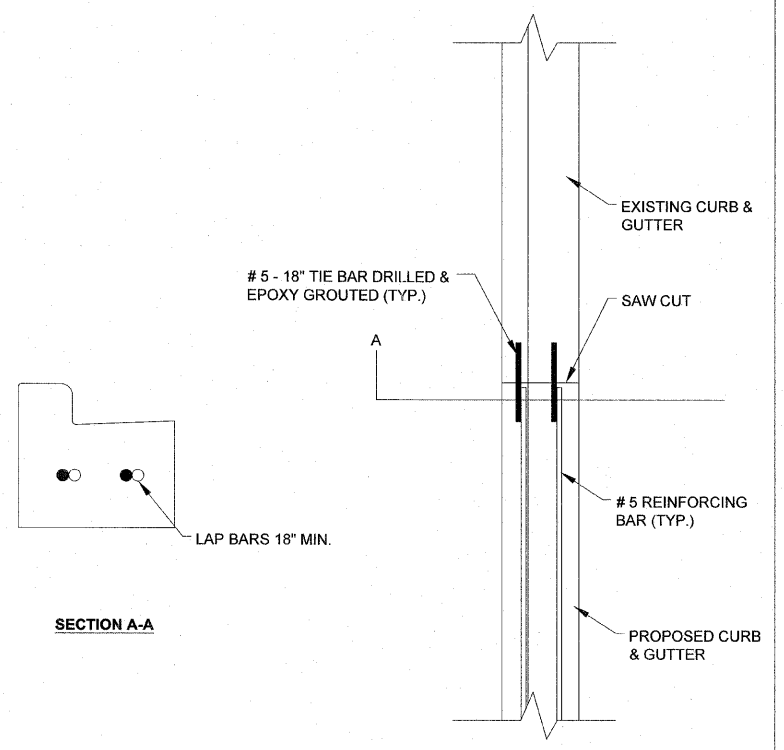
SECTION A-A



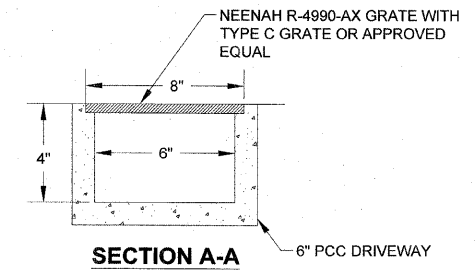
SECTION B-B



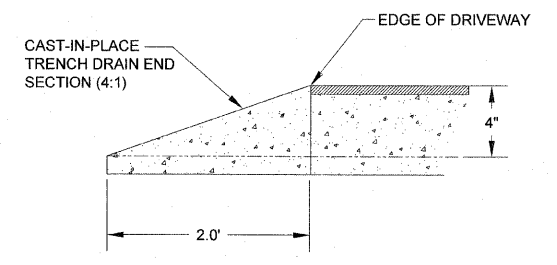
TYPICAL TRENCH DRAIN DETAIL



TYPICAL CURB REINFORCEMENT

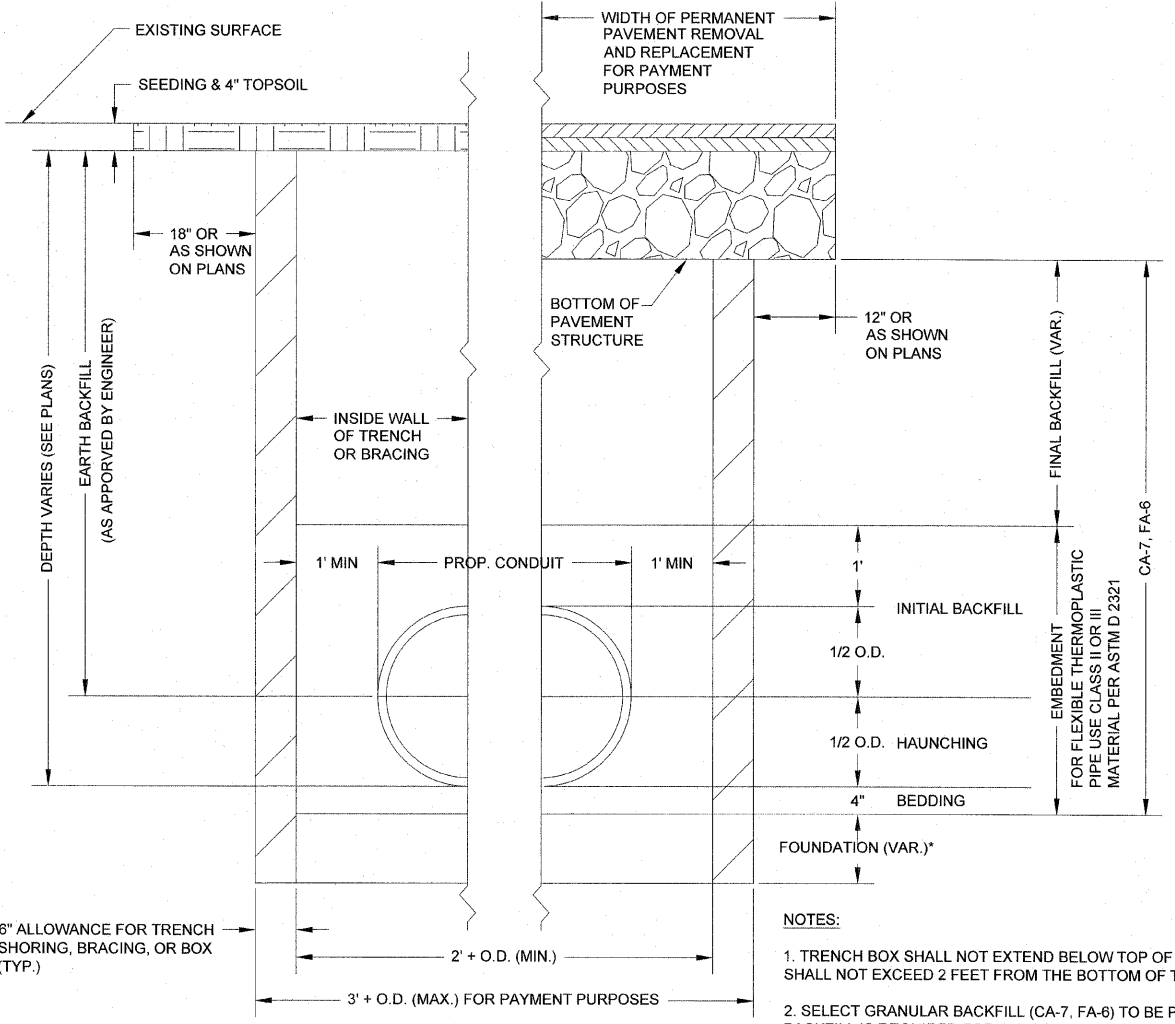


SECTION A-A



SECTION B-B

NOTES:
 1. COST OF FORMING AND POURING CAST-IN-PLACE TRENCH AND TRENCH DRAIN END SECTION SHALL BE INCLUDED IN THE UNIT PRICE FOR TRENCH DRAIN.



TYPICAL TRENCH DETAIL
NOT TO SCALE

NOTES:
 1. TRENCH BOX SHALL NOT EXTEND BELOW TOP OF PIPE, HOWEVER IT SHALL NOT EXCEED 2 FEET FROM THE BOTTOM OF THE TRENCH
 2. SELECT GRANULAR BACKFILL (CA-7, FA-6) TO BE PAID FOR AS TRENCH BACKFILL IS REQUIRED FOR ALL CONDUITS LOCATED UNDER OR WITHIN 2' OF EXISTING OR FUTURE PAVED AREAS.
 * ELIGIBLE FOR PAYMENT AS TRENCH BACKFILL WHERE SOIL CONDITIONS WARRANT, OTHERWISE INCIDENTAL TO THE PIPE.

SCALE: 1" = 20'

DESIGNED - JEP	REVISED - 11/29/2011
DRAWN - JCL	REVISED -
CHECKED - JEP	REVISED -
DATE - 12/01/2008	REVISED -

STATE OF ILLINOIS
 DEPARTMENT OF TRANSPORTATION

Details

FINAL