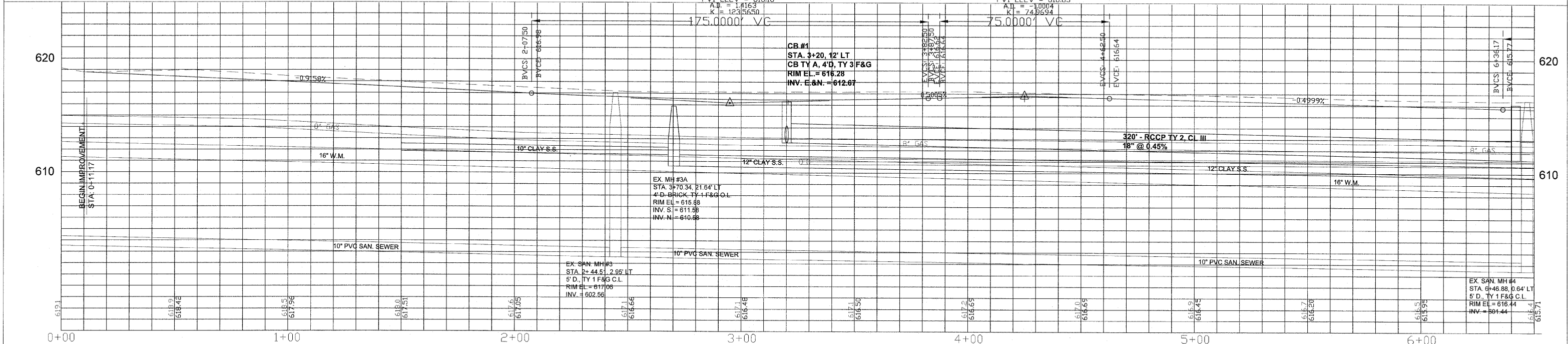
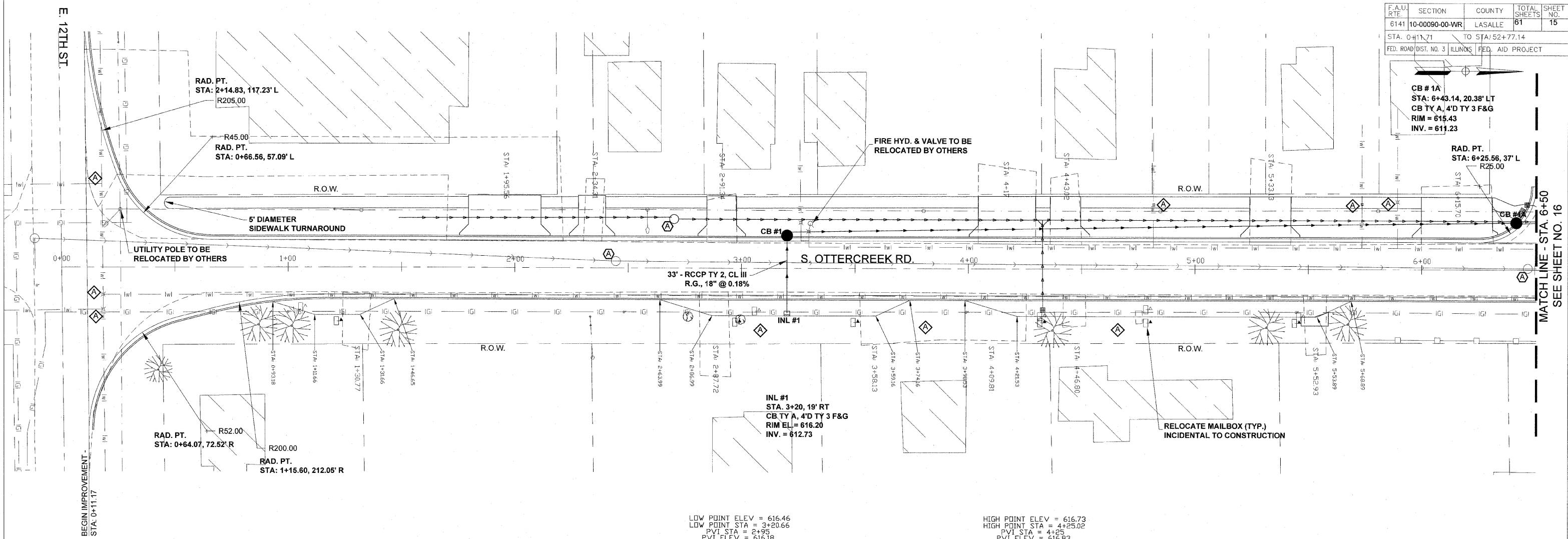


F.A.U. RTE.	SECTION	COUNTY	TOTAL SHEETS	SHEET NO.
6141	10-00090-00-WR	LASALLE	61	15
STA. 0+11.71		TO STA: 52+77.14		
FED. ROAD DIST. NO. 3 ILLINOIS FED. AID PROJECT				



FINAL

SCALE: 1" = 20'

DESIGNED - JEP	REVISED - 11/29/2011
DRAWN - JCL	REVISED -
CHECKED - JEP	REVISED -
DATE - 12/01/2008	REVISED -

STATE OF ILLINOIS DEPARTMENT OF TRANSPORTATION

Plan and Profile (Sta. 0+11.17 to 6+50)