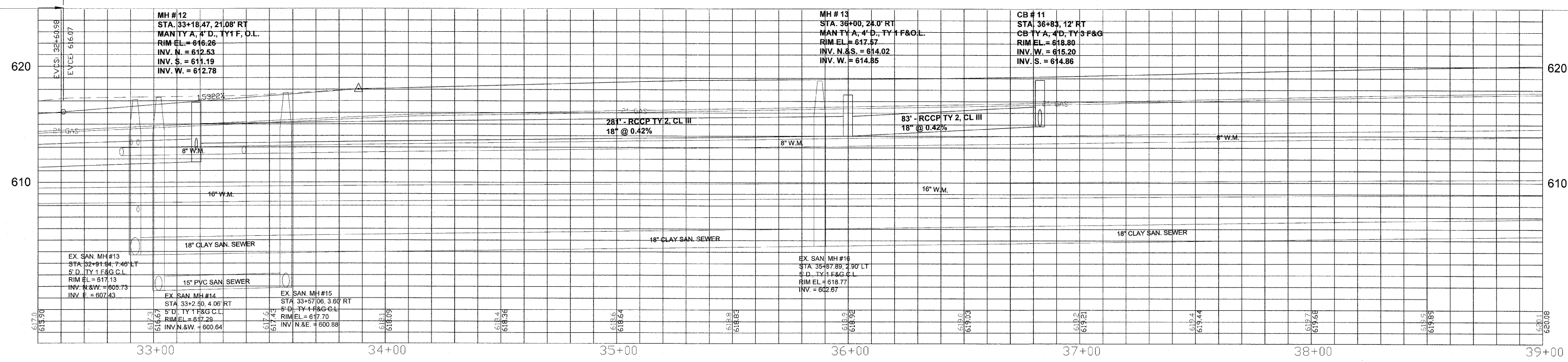
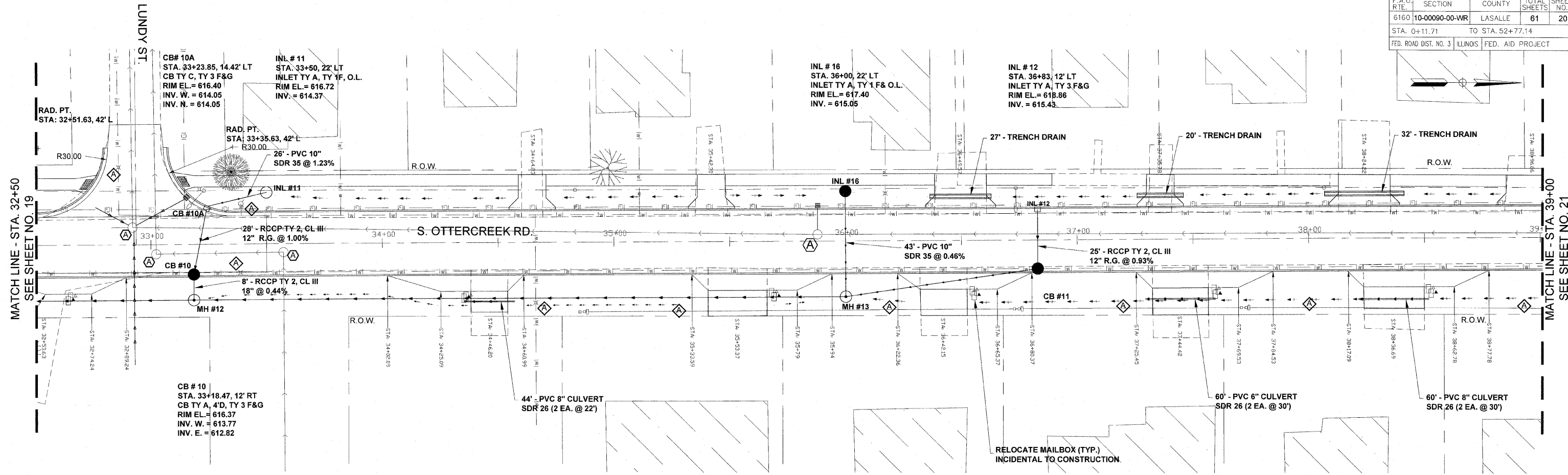


F.A.U. R.T.E.	SECTION	COUNTY	TOTAL SHEETS	SHEET NO.
6160	10-00090-00-WR	LASALLE	61	20
STA. 0+11.71		TO STA. 52+77.14		
FED. ROAD DIST. NO. 3		ILLINOIS FED. AID PROJECT		



FINAL

SCALE: 1" = 20'

DESIGNED - JEP	REVISED - 11/29/2011
DRAWN - JCL	REVISED -
CHECKED - JEP	REVISED -
DATE - 12/01/2008	REVISED -

STATE OF ILLINOIS
DEPARTMENT OF TRANSPORTATION

Plan and Profile (Sta. 32+50 to 39+00)