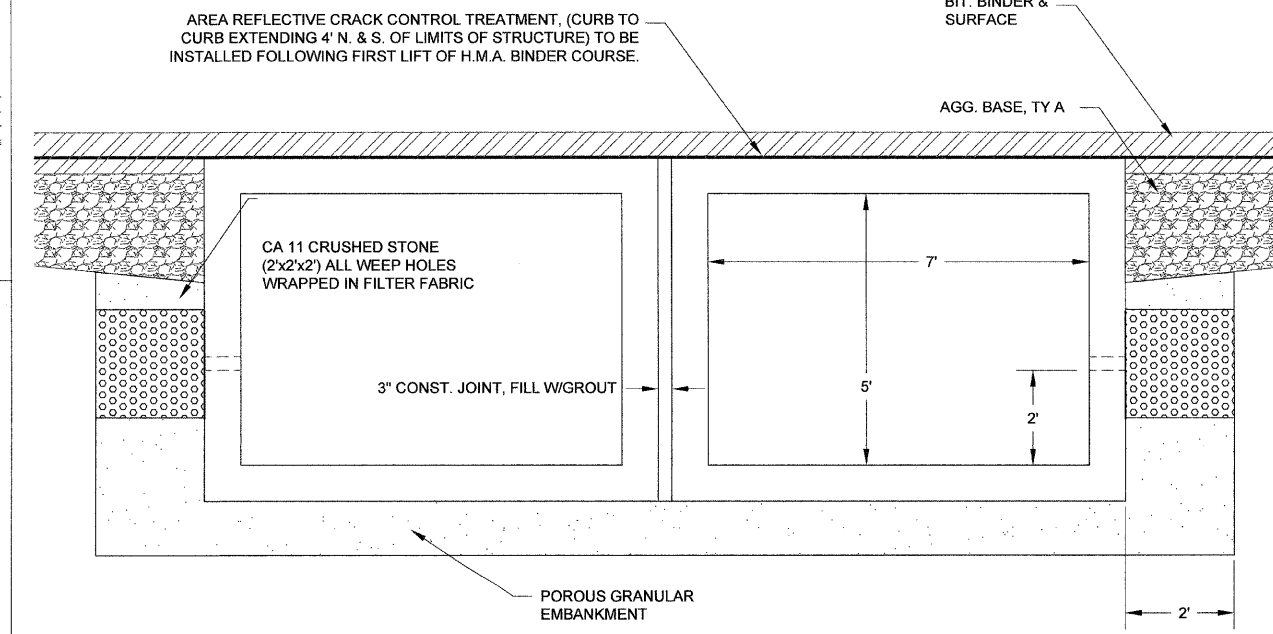
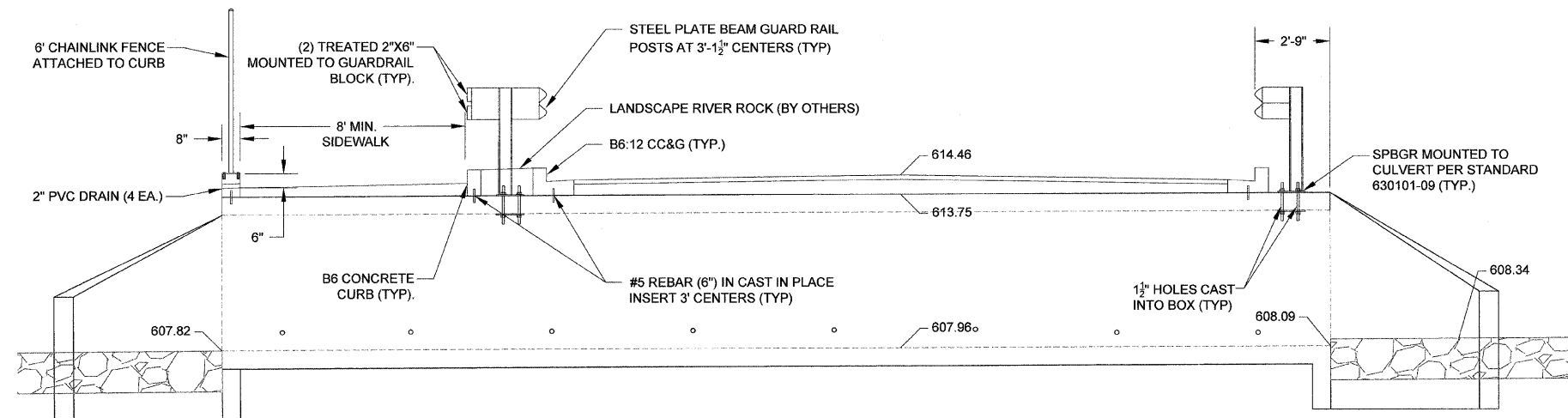
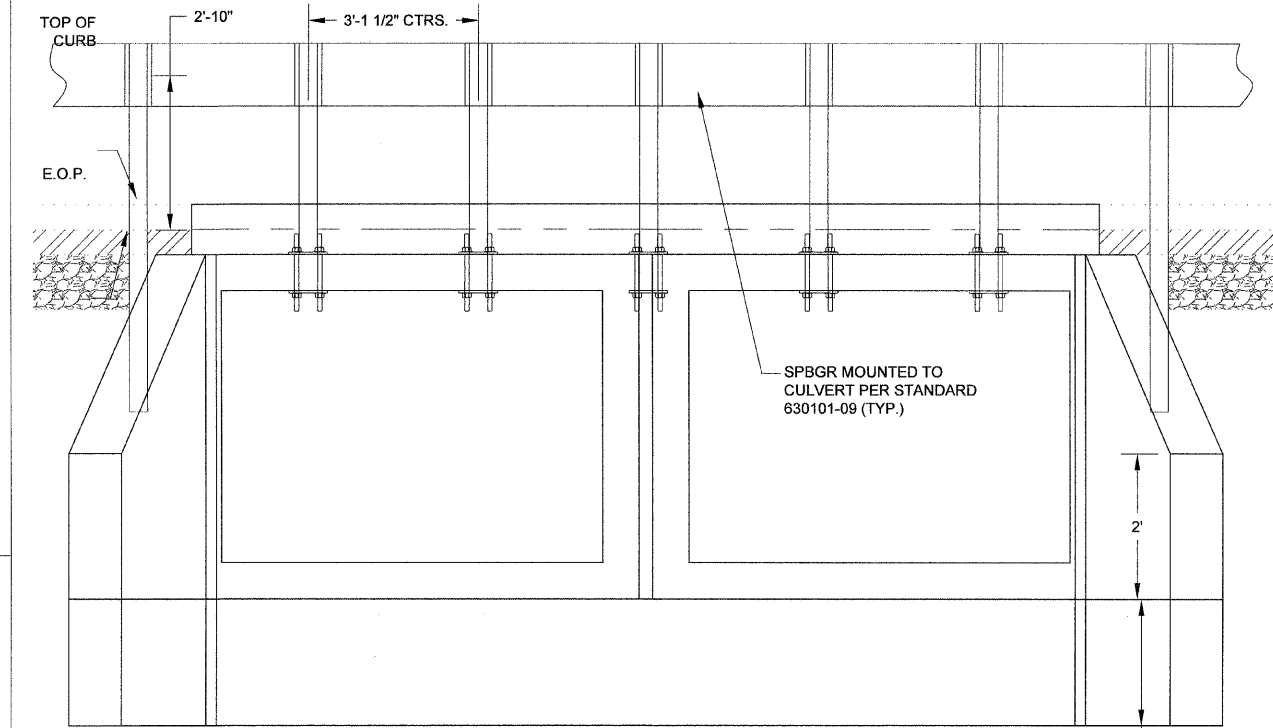
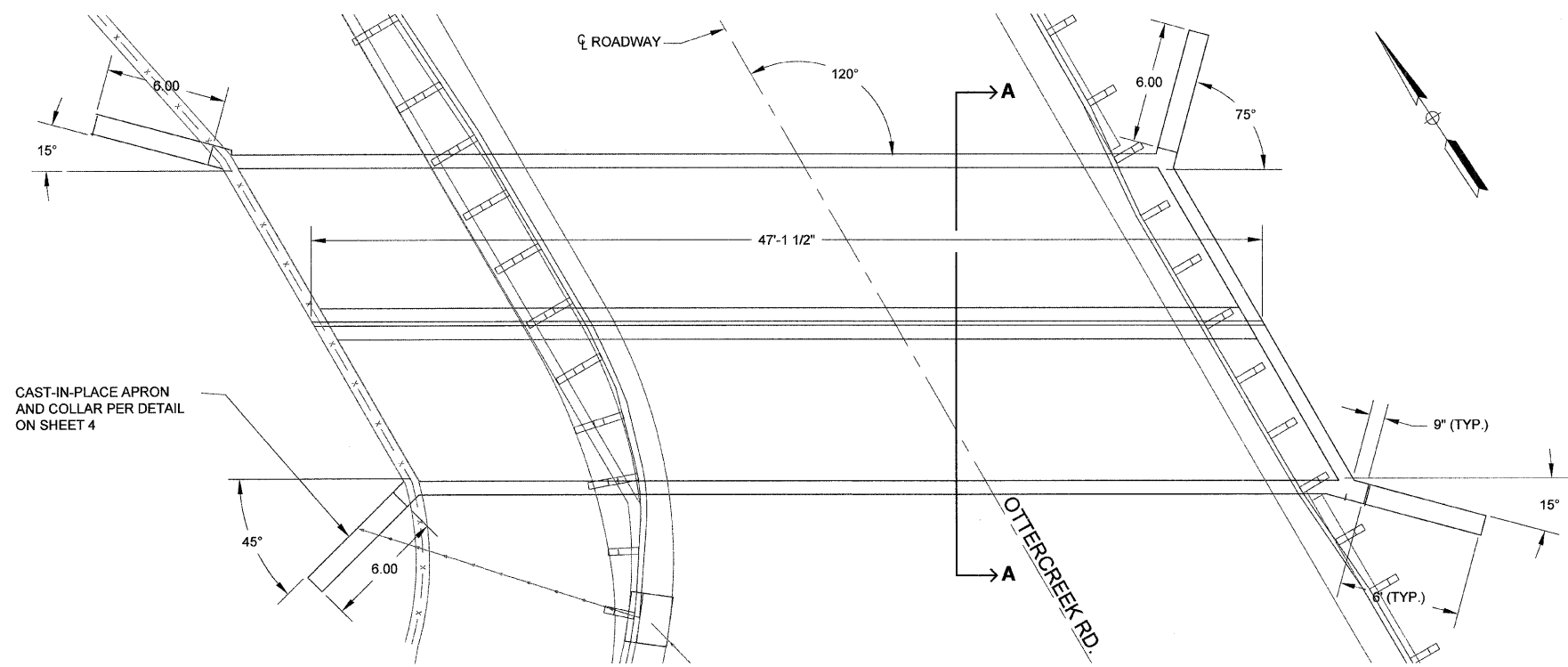


F.A.U. RTE.	SECTION	COUNTY	TOTAL SHEETS	SHEET NO.
6160	10-00090-00-WR	LASALLE	61	25
STA. 0+11.71		TO STA. 52+77.14		
FED. ROAD DIST. NO. 3		ILLINOIS FED. AID PROJECT		



BILL OF MATERIAL				
BAR	NO.	SIZE	LENGTH	SHAPE
#5 CURB 6" BARS	21	#5	6"	—
h (CIP APRON)	2	#4	26' - 0"	—
d (CIP APRON)	30	#4	5'-4"	—
b (CIP APRON)	10	#4	22' - 0"	—
v1 (CIP APRON)	24	#4	4' - 9"	—
s (CIP APRON)	4	#4	40'-0"	—
h1 (CIP APRON)	20	#4	6'-0"	—
v2 (CIP APRON)	36	#4	2'-9"	—

BILL OF MATERIAL		
ITEM	UNIT	QUANTITY
PRECAST CONCRETE BOX CULVERT 7' X 5'	FOOT	94.0
CONCRETE STRUCTURE (CIP APRON)	CU. YD.	7.2
REINFORCEMENT BARS	POUND	629.3

- NOTES**
1. PRECAST CONCRETE BOX CULVERT SECTIONS SHALL CONFORM TO THE REQUIREMENTS OF ARTICLE 540.06 OF THE STANDARD SPECIFICATIONS AND THE REQUIREMENTS OF ASTM C 1577. PRECAST BOX CULVERT SECTIONS SHALL BE DESIGNED USING LOAD AND RESISTANCEFACTOR DESIGN.
 2. THE MINIMUM CONCRETE STRENGTH SHALL BE 5,000 PSI.
 3. REINFORCEMENT BARS SHALL CONFORM TO THE REQUIREMENTS OF AASHTO M 31, M 42, OR M 53 GRADE 60.
 4. LIFTING HOLES SHALL BE FILLED WITH CONCRETE PLUGS AND MASTIC AFTER BOX SECTIONS ARE IN PLACE.

SCALE: N.T.S.	DESIGNED - JEP	REVISED - 11/29/2011
	DRAWN - JCL	REVISED -
	CHECKED - JEP	REVISED -
	DATE - 12/01/2008	REVISED -

STATE OF ILLINOIS
DEPARTMENT OF TRANSPORTATION

Box Culvert Plan (Sta: 23+38.43)

FINAL