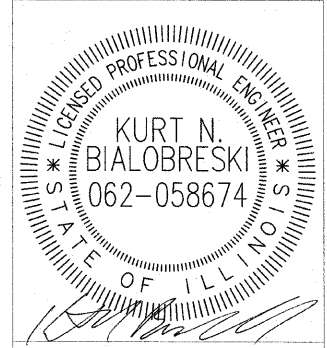
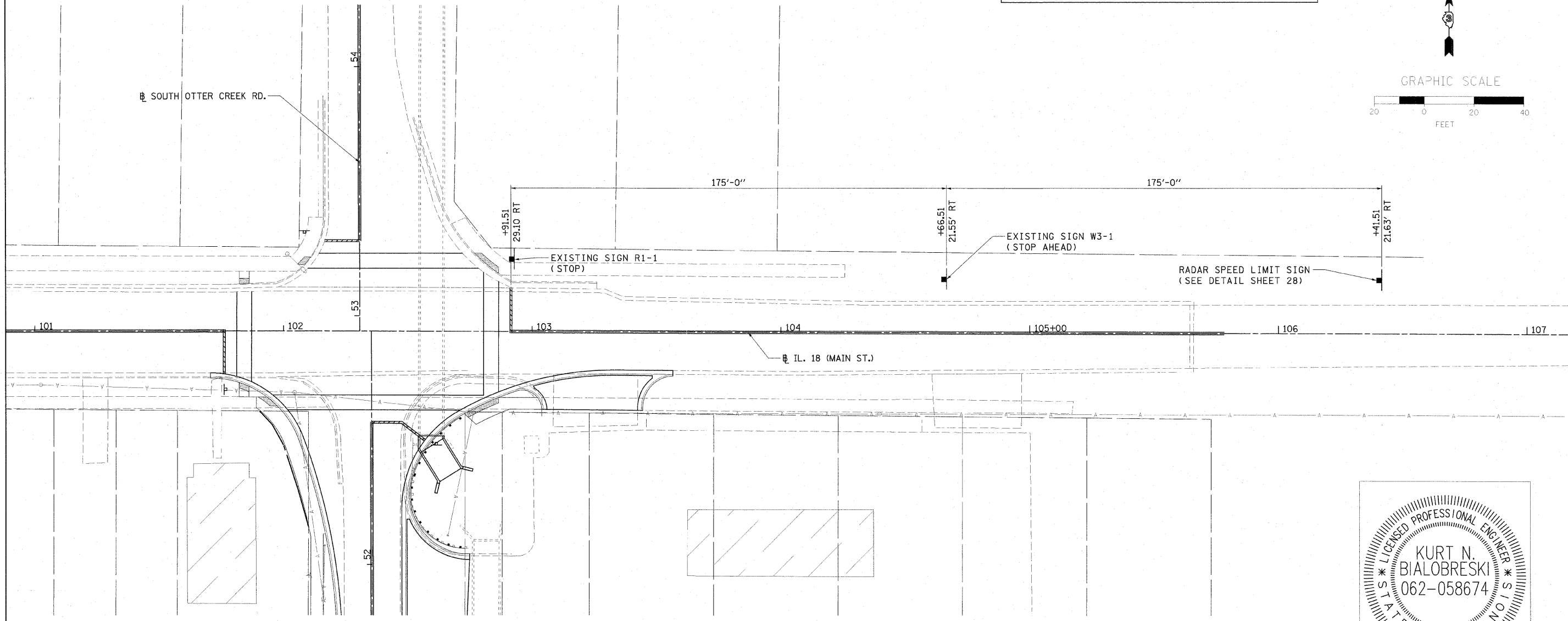
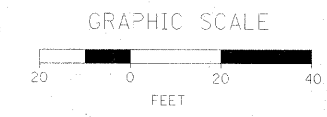


NOTES 1. SIGNS AND POLE TO BE PLACED A MINIMUM OF 8 FEET FROM THE EDGE OF PAVEMENT.
 2. LOCATION OF SIGNS ARE APPROXIMATE AS EXISTING CONDITIONS MAY DICTATE THE USE OF EXISTING UTILITY POLES. LOCATIONS OF SIGNS SHALL BE APPROVED BY THE ENGINEER.



DATE SIGNED : 9/26/2011
 LIC. EXP. DATE : 11/30/2011

FILE NAME = I:\09\Jobs\09\078\CADD\Road\Sheet\c-101.dgn	USER NAME = onder0846	DESIGNED - RLA	REVISED -	STATE OF ILLINOIS DEPARTMENT OF TRANSPORTATION	ADVANCED WARNING SIGN PLAN			F.A.P. RTE. 653	SECTION 10-00090-00-WR	COUNTY LASALLE	TOTAL SHEETS 61	SHEET NO. 28
PLOT SCALE = 20.0000' / 1"		DRAWN - RLA	REVISED -		SCALE: 1" = 20'	SHEET NO. OF	SHEETS	STA.	TO STA.	CONTRACT NO.		
PLOT DATE = 12/25/2011		CHECKED - KNB	REVISED -		ILLINOIS FED. AID PROJECT							
		DATE - 9-26-11	REVISED -									