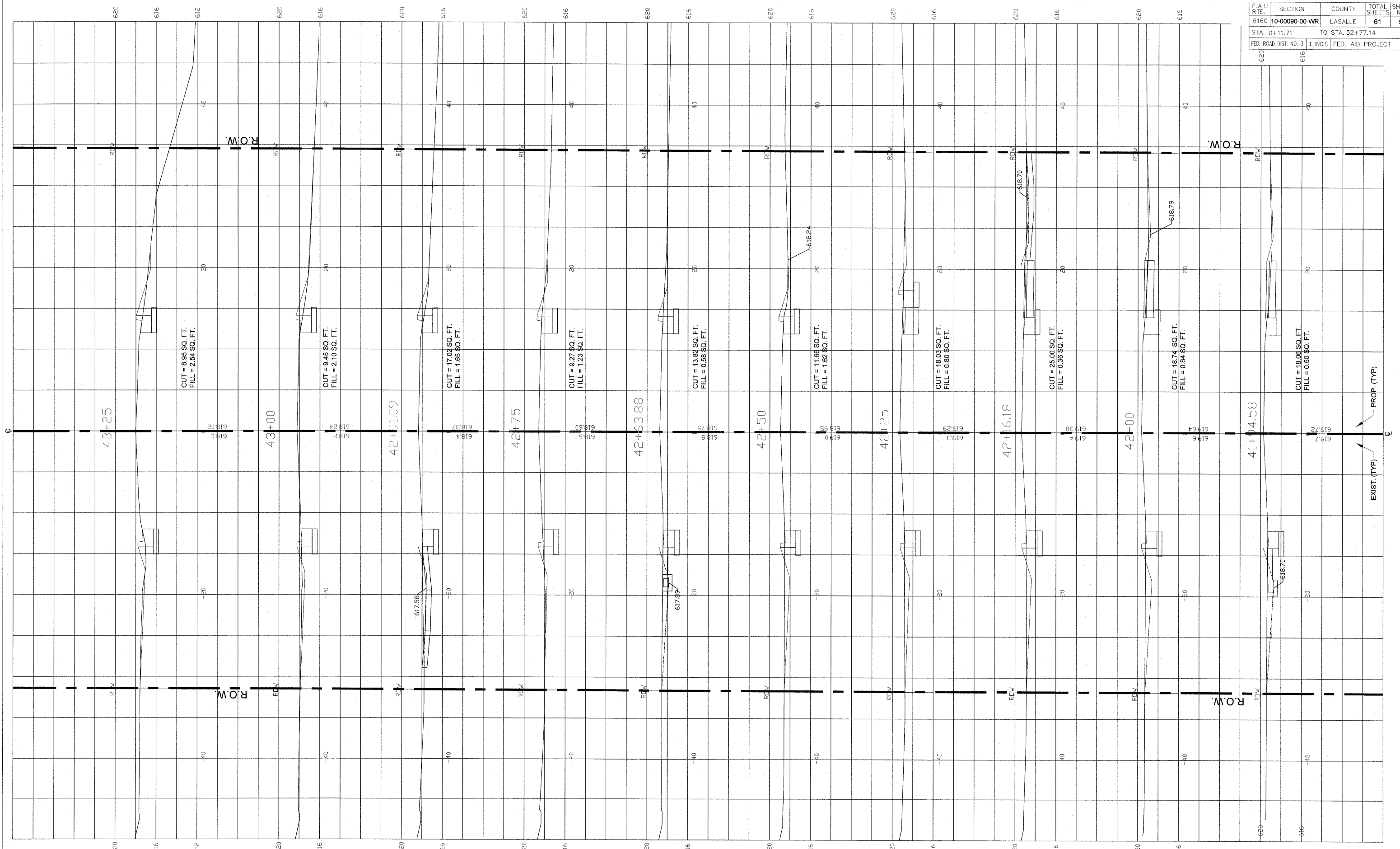


F.A.U. RITE	SECTION	COUNTY	TOTAL SHEETS	SHEET NO.
6160	10-00090-00-WR	LASALLE	61	55
STA. 0+11.71		TO STA. 52+77.14		
FED. ROAD DIST. NO. 3		ILLINOIS	FED. AID PROJECT	



**FINAL**

SCALE: 1" = 20'

DESIGNED - JEP	REVISED -
DRAWN - JCL	REVISED -
CHECKED - JEP	REVISED -
DATE - 12/01/2008	REVISED -

STATE OF ILLINOIS  
DEPARTMENT OF TRANSPORTATION

Cross Sections (Ottercreek Rd.) Sta. 41+94.58 to Sta. 43+25