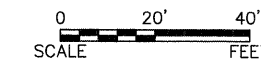


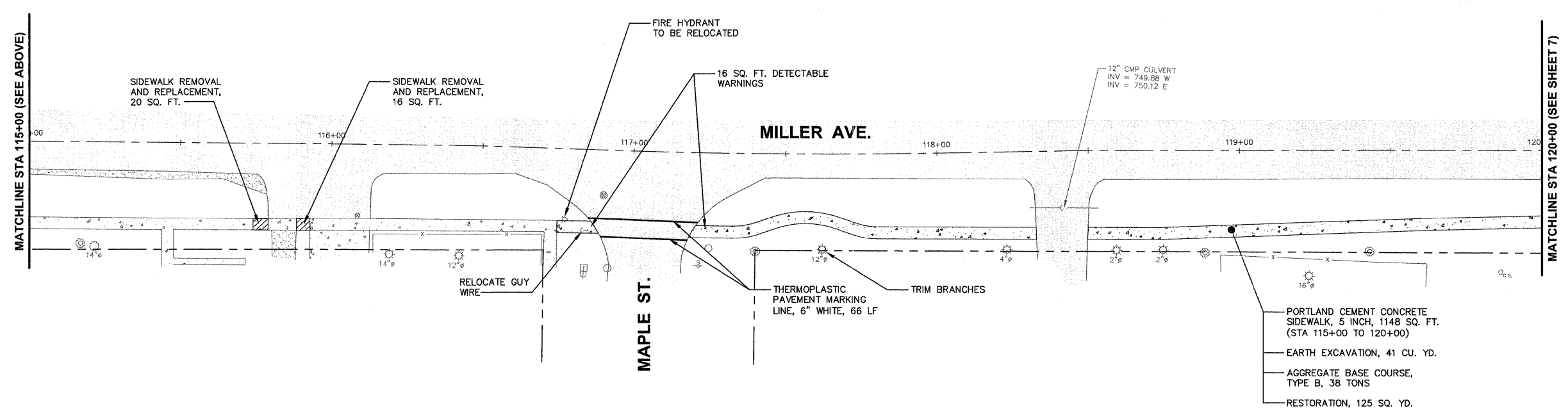
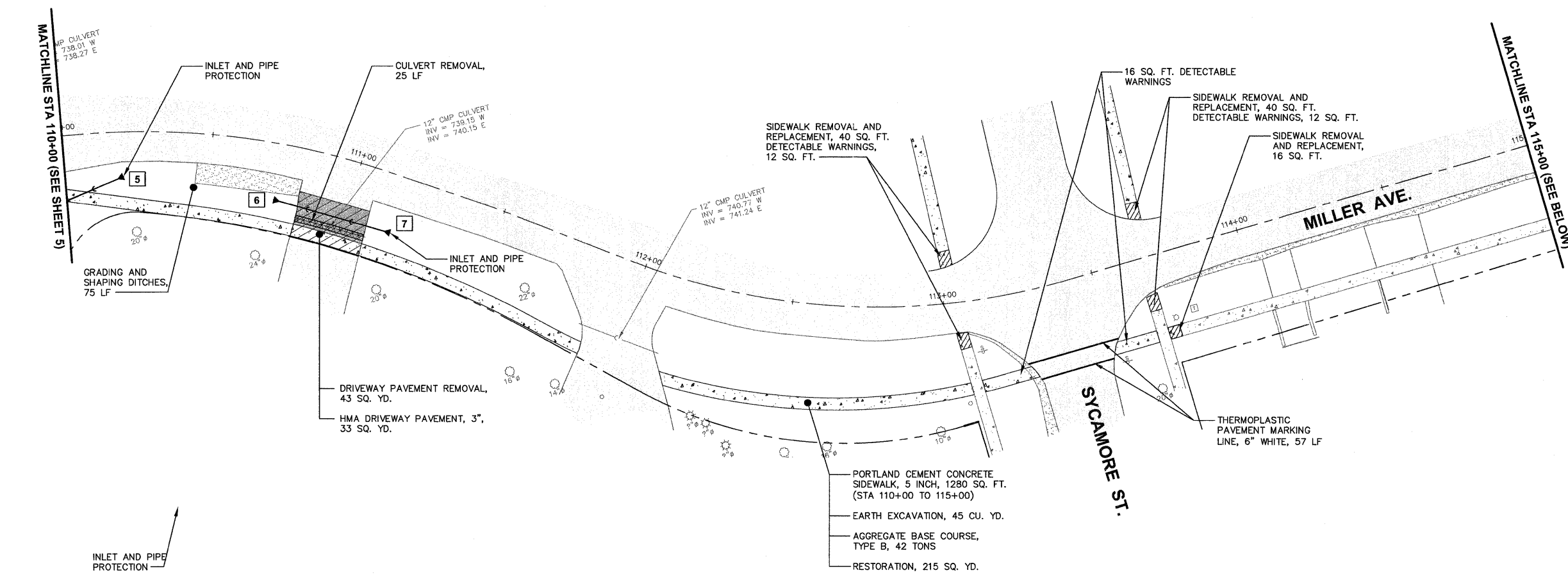
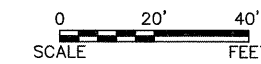
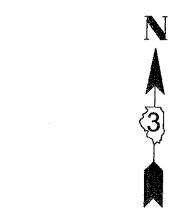
F.A.U. RTE.	SECTION	COUNTY	TOTAL SHEETS	SHEET NO.
N/A	10-00010-00-SW	DEKALB	11	6

CONTRACT NO. 87457



**STORM SEWER SCHEDULE**

- 5 METAL END SECTION 12" STA 110+20, 14.81' RT. INV = 738.50
- 6 METAL END SECTION 12" STA 110+73.68, 18.67' RT. INV = 739.20  
40 LF PIPE CULVERTS, CLASS C, 12" TYPE 1 @ 2.00% TRENCH BACKFILL, 3 CU. YD.
- 7 METAL END SECTION 12" STA 111+16.31, 18.93' RT. INV = 740.00



Plotted: February 3, 2012 @ 8:24 AM By: Kris Plung - Job: 06 Miller 22x34

COPYRIGHT © 2012 ENGINEERING ENTERPRISES, INC.

**Engineering Enterprises, Inc.**  
CONSULTING ENGINEERS  
52 Wheeler Road  
Sugar Grove, Illinois 60554  
630.466.6700 / www.eeiweb.com

**VILLAGE OF HINCKLEY**  
DEKALB COUNTY, ILLINOIS

NO.	DATE	REVISIONS
1	2/1/12	REVISED PER IDOT COMMENTS FROM 12/14/11

**SAFE ROUTES TO SCHOOL**  
VILLAGE OF HINCKLEY

**MILLER AVENUE**  
STA 110+00 TO STA 120+00

DATE:	NOVEMBER 2011
PROJECT NO.:	HI0804
FILE:	HI0804-PLAN
SHEET	<b>6</b> OF <b>11</b>

Path: H:\SSR\PROJ\10804\DWG\FINAL\_ENG\HI0804-PLAN