

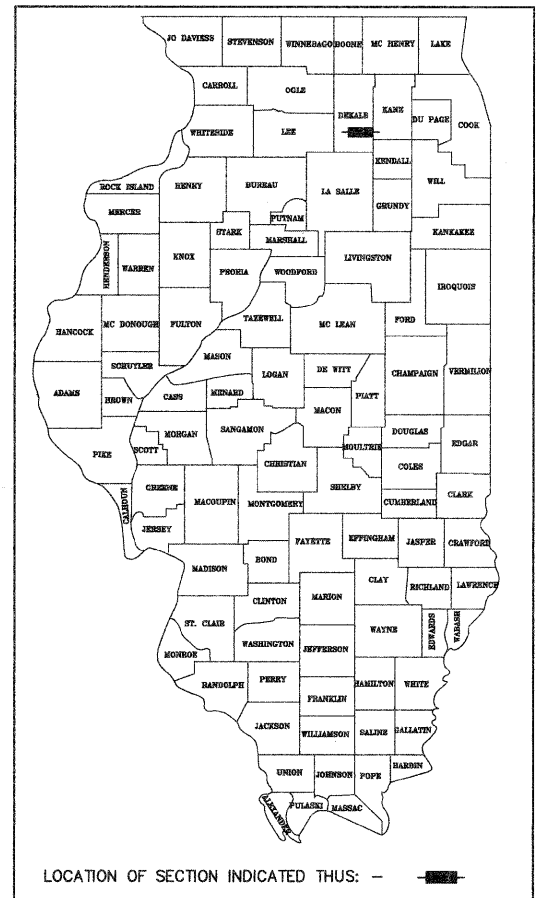
FOR INDEX OF SHEETS, SEE SHEET NO.2

04-27-12 LETTING ITEM 049

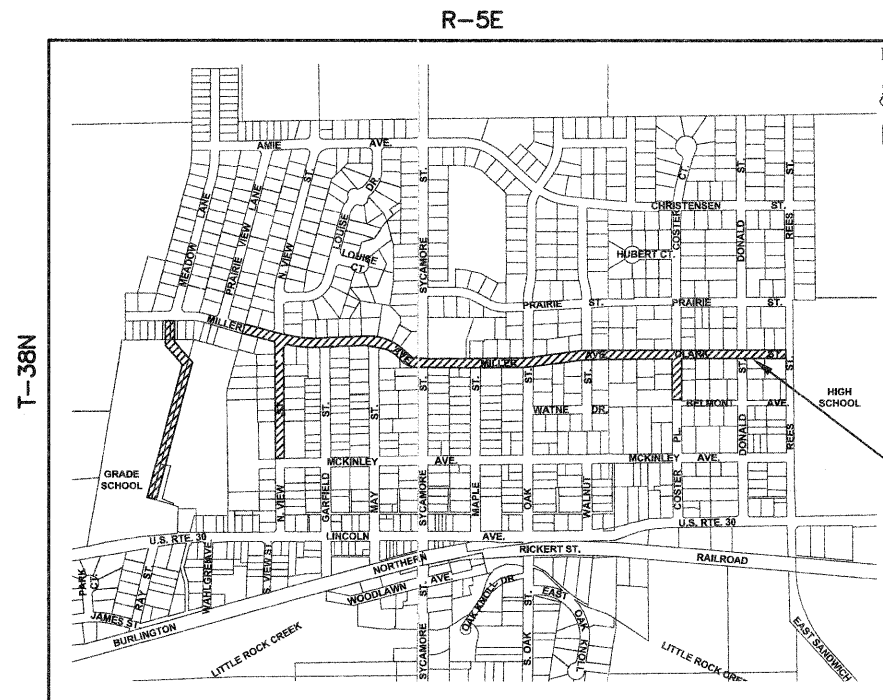
STATE OF ILLINOIS DEPARTMENT OF TRANSPORTATION DIVISION OF HIGHWAYS PLANS FOR PROPOSED FEDERAL AID PROJECT

SAFE ROUTES TO SCHOOL PROJECT NO. SRTS-4009(112) SECTION NO. 10-00010-00-SW VILLAGE OF HINCKLEY DEKALB COUNTY JOB NO. C-40-059-09

F.A.U. RTE.	SECTION	COUNTY	TOTAL SHEETS	SHEET NO.
N/A	10-00010-00-SW	DEKALB	11	1
FED. ROAD DIST. NO.		ILLINOIS	FED. AID PROJECT - SRTS	
CONTRACT NO. 87457				



PROJECT LOCATED IN THE VILLAGE OF HINCKLEY



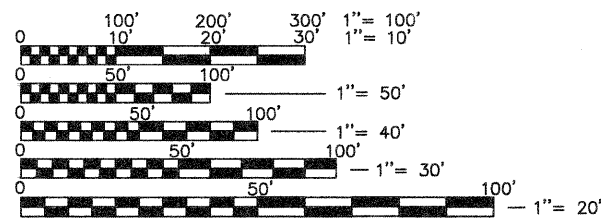
PROJECT LOCATION

NW 1/4 SECTION 14

LOCATION MAP
N.T.S.

NET LENGTH OF PROJECT = 6,500 FEET (1.23 MILES)
GROSS LENGTH OF PROJECT = 6,500 FEET (1.23 MILES)

FIELD ENGINEER: KELLY VLASTNIK (815) 434-8575
CONSULTING ENGINEER: ENGINEERING ENTERPRISES, INC.
CONTACT: JASON M. BAUER (630)-466-6700



FULL SIZE PLANS HAVE BEEN PREPARED USING STANDARD ENGINEERING SCALES, REDUCED SIZED PLANS WILL NOT CONFORM TO STANDARD SCALES, IN MAKING MEASUREMENTS ON REDUCED PLANS, THE ABOVE SCALES MAY BE USED.

JULIE JOINT UTILITY LOCATION INFORMATION FOR EXCAVATION CALL 811

Know what's below.
Call before you dig.

BENCH MARKS

BM#1 - TOP OF SOUTHEAST FLANGE BOLT ON FIRE HYDRANT AT THE SOUTHEAST CORNER OF MILLER AND OAK.
ELEV = 753.70

BM#2 - CUT CROSS ON NORTHWEST FLANGE BOLT ON FIRE HYDRANT AT THE SOUTHEAST CORNER OF MILLER AND GARFIELD.
ELEV = 743.20

CONTRACT 87457

Engineering Enterprises, Inc.
CONSULTING ENGINEERS
52 Wheeler Road
Sugar Grove, Illinois 60554
P: 630.466.6700 - W: www.eeiweb.com

STATE OF ILLINOIS
DEPARTMENT OF TRANSPORTATION

APPROVED: [Signature] 2-16, 2012
VILLAGE PRESIDENT

APPROVED: [Signature] 2-16, 2012
DISTRICT THREE IMPLEMENTATION ENGINEER

RELEASED FOR BID
BASED ON LIMITED
REVIEW: [Signature] 2-16, 2012
DEPUTY DIRECTOR OF HIGHWAYS, REGION TWO ENGINEER

DATE: 2-16-12

BY: [Signature]
JASON M. BAUER

LICENSE EXPIRES: NOVEMBER 30, 2013

SEAL

PRINTED BY THE AUTHORITY OF THE STATE OF ILLINOIS

FIELD ENGINEER: KELLY VLASTNIK (815) 434-8575

Plotted: February 10, 2012 @ 1:38 PM By: Kris Pung - Tab: 01 Cover - 22x34
COPYRIGHT © 2012 ENGINEERING ENTERPRISES, INC.

Path: H:\SOSKPROJ\HOB04\DWG\DWG_FINAL_ENO\HOB04-CVR

GENERAL NOTES

1. STANDARD SPECIFICATIONS FOR ROAD AND BRIDGE CONSTRUCTION ADOPTED JAN. 1, 2012, SUPPLEMENTAL SPECIFICATIONS AND RECURRING SPECIFICATIONS AND PROVISIONS ADOPTED JAN. 1, 2012, AND REVISIONS THERETO, THESE IMPROVEMENT PLANS, DETAILS, SPECIAL PROVISIONS, CODES AND ORDINANCES OF THE VILLAGE OF HINCKLEY, ILLINOIS SHALL GOVERN APPLICABLE PORTIONS OF THIS PROJECT.
2. SPECIAL ATTENTION IS CALLED TO THE FOLLOWING ARTICLES IN THE STANDARD SPECIFICATIONS FOR ROAD AND BRIDGE CONSTRUCTION:
 ARTICLE 105.06 – COOPERATION BY CONTRACTOR
 ARTICLE 105.07 – COOPERATION WITH UTILITIES
 ARTICLE 107.14 – MAINTENANCE OF TRAFFIC
 ARTICLE 107.15 – DIRT ON PAVEMENT OR STRUCTURES
 ARTICLE 107.25 – PROTECTION AND RESTORATION OF TRAFFIC SIGNS
 ARTICLE 107.31 – CONTRACTOR'S RESPONSIBILITY FOR UTILITY PROPERTY AND SERVICES
 ARTICLE 701.04 – WORK ZONE TRAFFIC CONTROL AND PROTECTION: GENERAL
 ARTICLE 701.07 – WORK ZONE TRAFFIC CONTROL AND PROTECTION: DROP-OFFS
 ARTICLE 701.17 – WORK ZONE TRAFFIC CONTROL AND PROTECTION: SPECIFIC CONSTRUCTION OPERATIONS
3. LOCATIONS OF UTILITIES SHOWN ON THE PLANS ARE APPROXIMATE ONLY AND ARE NOT NECESSARILY COMPLETE. EXISTING AND PUBLIC UTILITIES ARE SHOWN ON THE PLANS, ACCORDING TO INFORMATION OBTAINED FROM UTILITY COMPANIES, MUNICIPALITIES AND SURVEYS.
4. THE CONTRACTOR SHALL PROTECT AND PRESERVE ALL SECTION OR SUBSECTION SURVEY MONUMENTS OR PROPERTY OR REFERENCE MARKERS UNTIL THE OWNER, HIS/HER AGENT OR AUTHORIZED SURVEYOR HAS WITNESSED OR OTHERWISE REFERENCED THEIR LOCATIONS.
5. ALL ELEVATIONS ARE BASED ON U.S.G.S. DATUM.
6. THE CONTRACT UNIT PRICE FOR ALL REMOVAL PAY ITEMS SHALL INCLUDE ANY REQUIRED SAW CUTS.
7. CONTRACTOR SHALL PROVIDE AND INSTALL A MINIMUM OF TWO WEIGHTED SAND BAGS ON EACH TYPE I OR TYPE II BARRICADE USED (ONE WEIGHTED SAND BAG ACROSS EACH BOTTOM RAIL). THIS WORK WILL NOT BE PAID FOR SEPARATELY BUT SHALL BE INCLUDED IN THE CONTRACT UNIT PRICE FOR THE TRAFFIC CONTROL AND PROTECTION ITEMS.
8. BEFORE STARTING ALL EXCAVATIONS, THE CONTRACTOR SHALL CALL "J.U.L.I.E." AT 811 FOR FIELD LOCATIONS OF BURIED UTILITIES. (48 HOUR NOTIFICATION IS REQUIRED)
9. IN ACCORDANCE WITH ARTICLE 107.15, WHENEVER CONSTRUCTION DEBRIS OR LOOSE MATERIAL IS DEPOSITED IN THE FLOW LINE OF DRAINAGE STRUCTURES SUCH THAT THE NATURAL FLOW OF WATER IS OBSTRUCTED, IT SHALL BE REMOVED AT THE CLOSE OF EACH WORKING DAY. AT THE CONCLUSION OF CONSTRUCTION OPERATIONS, ALL DRAINAGE STRUCTURES SHALL BE FREE FROM DIRT AND DEBRIS.
10. IF, DURING CONSTRUCTION, THE CONTRACTOR ENCOUNTERS OR OTHERWISE BECOMES AWARE OF ANY SEWER, UNDER DRAINS OR FIELD DRAINS WITHIN THE RIGHT-OF-WAY, OTHER THAN THOSE SHOWN ON THE PLANS, HE/SHE SHALL INFORM THE ENGINEER, WHO SHALL DIRECT THE WORK NECESSARY TO MAINTAIN OR TO REPLACE THE FACILITIES IN SERVICE AND TO PROTECT THEM FROM DAMAGE. EXISTING FACILITIES TO BE MAINTAINED THAT ARE DAMAGED BECAUSE OF NON-COMPLIANCE WITH THIS PROVISION SHALL BE REPLACED AT THE CONTRACTORS OWN EXPENSE.
11. THE RESIDENT ENGINEER SHALL CONTACT THE IDOT DISTRICT 3 TRAFFIC CONTROL SUPERVISOR A MINIMUM OF 72 HOURS PRIOR TO THE PLACEMENT OF ANY TRAFFIC CONTROL DEVICES.
12. ALL WORK PREFORMED RELATIVE TO THIS IMPROVEMENT SHALL COMPLY WITH ALL APPLICABLE RULES AND REGULATIONS OF O.S.H.A.
13. ALL ROADWAYS SHALL BE OPEN TO TRAFFIC AT ALL TIMES. WHEN IT IS NECESSARY TO CLOSE ONE LANE OF TRAFFIC DUE TO CONSTRUCTION, THE CONTRACTOR SHALL MAINTAIN AT ONE LANE OF TRAFFIC DURING CONSTRUCTION HOURS WITH THE USE OF SIGNS AND FLAGGERS AS SHOWN IN THE TRAFFIC CONTROL STANDARDS. DURING NON-WORK HOURS, ALL LANES SHALL BE OPEN TO TRAFFIC.
14. ALL SIDEWALK AND PATH SECTIONS TO BE REPLACED AT ALL ROADWAY CROSSINGS SHALL BE INSTALLED WITH PREFORMED DETECTABLE WARNING PANELS IN LIEU OF STAMPED COLORED CONCRETE. A PREFABRICATED, BRICK RED (FEDERAL STANDARD COLOR 30166) DETECTABLE WARNING PANEL, WITH SQUARE PATTERNED TRUNCATED DOMES SHALL BE USED. THE PANEL SHALL BE AN E-Z-SET CERAMIC COMPOSITE DETECTABLE WARNING PANEL, AN ADA SOLUTIONS CAST-IN-PLACE COMPOSITE PAVER TILE, OR APPROVED EQUAL. THIS WORK SHALL BE IN ACCORDANCE WITH THE DETAILS SHOWN IN THE PLANS.
15. IT IS THE RESPONSIBILITY OF THE CONTRACTOR TO CONTACT ANY RESIDENT OR BUSINESS OF ANY DRIVEWAY REMOVAL AND REPLACEMENT THAT WILL INHIBIT ACCESS TO THEIR DRIVEWAY, IN WRITING, A MINIMUM OF 48 HOURS BUT NOT MORE THAN 72 HOURS, PRIOR TO THE COMMENCEMENT OF THESE ACTIVITIES. THE MORNING OF THE WORK, THE CONTRACTOR SHALL AGAIN TO NOTIFY THE OWNER VERBALLY, TO ALLOW THE OWNER TIME TO MOVE THEIR VEHICLE SO AS NOT TO PROHIBIT THE VEHICLE FROM LEAVING THE DRIVEWAY UPON REMOVAL OF ANY MATERIAL. THE NOTICE GIVEN OUT BY THE CONTRACTOR SHOULD PROVIDE INFORMATION REGARDING THE ANTICIPATED DATE THAT FULL ACCESS WILL BE RESTORED. COORDINATION BETWEEN ACTIVITIES SHOULD ALLOW ALL WORK TO BE DONE IN A TIMELY MATTER SO AS TO PERMIT ACCESS TO THE ROADWAY. ANY ADDITIONAL COST OF STAGING REQUIRED TO MAINTAIN TO ACCESS IS CONSIDERED INCLUDED IN THE COST OF THE SPECIFIED PAY ITEMS.

F.A.U. RTE.	SECTION	COUNTY	TOTAL SHEETS	SHEET NO.
N/A	10-00010-00-SW	DEKALB	11	2
CONTRACT NO. 87457				

INDEX OF SHEETS

SHEET NO.	SHEET DESCRIPTION
1.	COVER SHEET AND LOCATION MAP
2.	GENERAL NOTES, HIGHWAY STANDARDS AND INDEX OF SHEETS
3.	SUMMARY OF QUANTITIES
4.	TYPICAL SECTIONS
5.	PLAN VIEW AND CONSTRUCTION NOTES – MILLER AVE. STA 100+00 TO STA 110+00
6.	PLAN VIEW AND CONSTRUCTION NOTES – MILLER AVE. STA 110+00 TO STA 120+00
7.	PLAN VIEW AND CONSTRUCTION NOTES – MILLER AVE. STA 120+00 TO STA 130+00
8.	PLAN VIEW AND CONSTRUCTION NOTES – MILLER AVE. STA 130+00 TO STA 139+50
9.	PLAN VIEW AND CONSTRUCTION NOTES – VIEW STREET
10.	PLAN VIEW AND CONSTRUCTION NOTES – COSTER PLACE
11.	PLAN VIEW AND CONSTRUCTION NOTES – BIKE PATH

HIGHWAY STANDARDS

STD. NO.	DESCRIPTION
000001-06	STANDARD SYMBOLS, ABBREVIATIONS, AND PATTERNS
280001-06	TEMPORARY EROSION CONTROL SYSTEMS
424001-06	PERPENDICULAR CURB RAMPS FOR SIDEWALKS
424026	ENTRANCE / ALLEY PEDESTRIAN CROSSINGS
442201-03	CLASS C AND D PATCHES
542401-01	METAL END SECTIONS FOR PIPE CULVERTS
701501-06	URBAN LANE CLOSURE, 2L, 2W, UNDIVIDED
701801-05	LANE CLOSURE MULTILANE, 1W OR 2W CROSSWALK OR SIDEWALK CLOSURE
701901-02	TRAFFIC CONTROL DEVICES
720001-01	SIGN PANEL MOUNTING DETAILS
720006-03	SIGN PANEL ERECTION DETAILS
728001-01	TELESCOPING STEEL SIGN SUPPORT
780001-03	TYPICAL PAVEMENT MARKINGS

Plotted: February 9, 2012 @ 3:27 PM By: Kris Fung - Tab: 02 Notes - 22x34

COPYRIGHT © 2012 ENGINEERING ENTERPRISES, INC.

Engineering Enterprises, Inc.
 CONSULTING ENGINEERS
 52 Wheeler Road
 Sugar Grove, Illinois 60554
 630.466.6700 / www.eeiweb.com

VILLAGE OF HINCKLEY
 DEKALB COUNTY, ILLINOIS

NO.	DATE	REVISIONS
1	2/1/12	REVISED PER IDOT COMMENTS FROM 12/14/11

SAFE ROUTES TO SCHOOL IMPROVEMENTS

GENERAL NOTES, HIGHWAY STANDARDS, AND INDEX OF SHEETS

DATE:	NOVEMBER 2011
PROJECT NO:	HI0804
FILE:	HI0804-CVR
SHEET	2 OF 11

Path: H:\3535\PROJ\HI0804\DWG\DWG_FINAL_ENG\HI0804-CVR

F.A.U. RTE.	SECTION	COUNTY	TOTAL SHEETS	SHEET NO.
N/A	10-00010-00-SW	DEKALB	11	3
CONTRACT NO. 87457				

SUMMARY OF QUANTITIES

PAY ITEM	PAY ITEM DESCRIPTION	UNIT	QUANTITY
			[002]
20101200	TREE ROOT PRUNING	EACH	1
20101350	TREE PRUNING (OVER 10 INCH DIAMETER)	EACH	2
20200100	EARTH EXCAVATION	CU YD	538
20800150	TRENCH BACKFILL	CU YD	84
21101615	TOPSOIL FURNISH AND PLACE, 4"	SQ YD	3775
21400100	GRADING AND SHAPING DITCHES	FOOT	830
25000100	SEEDING, CLASS 1	ACRE	0.8
25000400	NITROGEN FERTILIZER NUTRIENT	POUND	72
25000500	PHOSPHOROUS FERTILIZER NUTRIENT	POUND	72
25000600	POTASSIUM FERTILIZER NUTRIENT	POUND	72
25100630	EROSION CONTROL BLANKET	SQ YD	3775
28000500	INLET AND PIPE PROTECTION	EACH	13
35101400	AGGREGATE BASE COURSE TYPE B	TON	504
35800100	PREPARATION OF BASE	SQ YD	990
40200800	AGGREGATE SURFACE COURSE, TYPE B	TON	4.5
40300100	BITUMINOUS MATERIALS (PRIME COAT)	GALLON	495
40601005	HOT-MIX ASPHALT REPLACEMENT OVER PATCHES	TON	4
40603305	HOT-MIX ASPHALT SURFACE COURSE, MIX "C", N30	TON	115
42300200	PORTLAND CEMENT CONCRETE DRIVEWAY PAVEMENT, 6 INCH	SQ YD	12
42400200	PORTLAND CEMENT CONCRETE SIDEWALK 5 INCH	SQ FT	15691
42400800	DETECTABLE WARNINGS	SQ FT	220
44000200	DRIVEWAY PAVEMENT REMOVAL	SQ YD	255
44000600	SIDEWALK REMOVAL	SQ FT	467
44002208	HOT-MIX ASPHALT REMOVAL OVER PATCHES, 2"	SQ YD	33
44201694	CLASS D PATCHES, TYPE III, 4 INCH	SQ YD	27
50105220	PIPE CULVERT REMOVAL	FOOT	212
542C0217	PIPE CULVERTS, CLASS C, TYPE 1, 12"	FOOT	351
54215547	METAL END SECTIONS 12"	EACH	19
54215550	METAL END SECTIONS 15"	EACH	1
54215553	METAL END SECTIONS 18"	EACH	1
* Δ 56400400	FIRE HYDRANTS TO BE RELOCATED	EACH	1
60250200	CATCH BASINS TO BE ADJUSTED	EACH	1
60266600	VALVE BOXES TO BE ADJUSTED	EACH	1
67100100	MOBILIZATION	L SUM	1
70102620	TRAFFIC CONTROL AND PROTECTION, STANDARD 701501	L SUM	1
70102640	TRAFFIC CONTROL AND PROTECTION, STANDARD 701801	L SUM	1
72000100	SIGN PANEL - TYPE 1	SQ FT	44
72800100	TELESCOPING STEEL SIGN SUPPORT	FOOT	60
Δ 78000400	THERMOPLASTIC PAVEMENT MARKINGS - LINE 6"	FOOT	658
* Z0004510	HMA DRIVEWAY PAVEMENT, 3"	SQ YD	245

* SEE SPECIAL PROVISIONS
Δ SPECIALTY ITEMS

Plotted: February 9, 2012 @ 7:45 AM By: Kie Pung - Tab: 03 Quantities - 22334

COPYRIGHT © 2012 ENGINEERING ENTERPRISES, INC.

Engineering Enterprises, Inc.
CONSULTING ENGINEERS
52 Wheeler Road
Sugar Grove, Illinois 60554
630.466.6700 / www.eeiweb.com

VILLAGE OF HINCKLEY
DEKALB COUNTY, ILLINOIS

1	2/1/12	REVISED PER IDOT COMMENTS FROM 12/14/11
NO.	DATE	REVISIONS

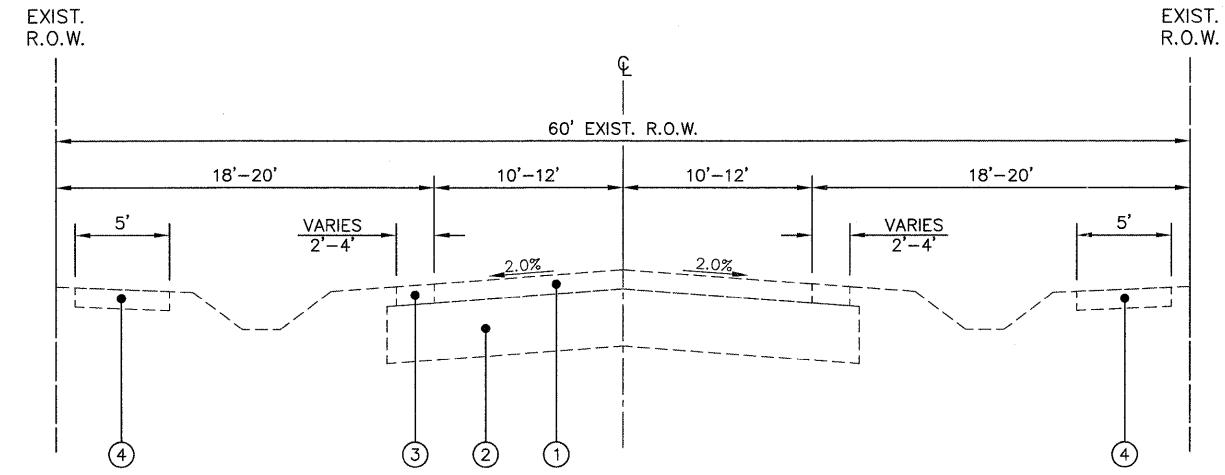
SAFE ROUTES TO SCHOOL IMPROVEMENTS

SUMMARY OF QUANTITIES

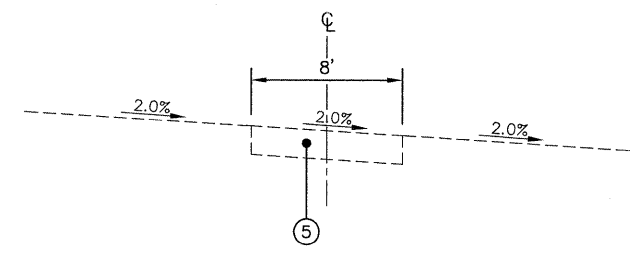
DATE:	NOVEMBER 2011
PROJECT NO:	H10804
FILE:	H10804-CVR
SHEET	3 OF 11

Path: \\SBSRFR01\H10804\DWG\DWG_FINAL_ENG\H10804-CVR

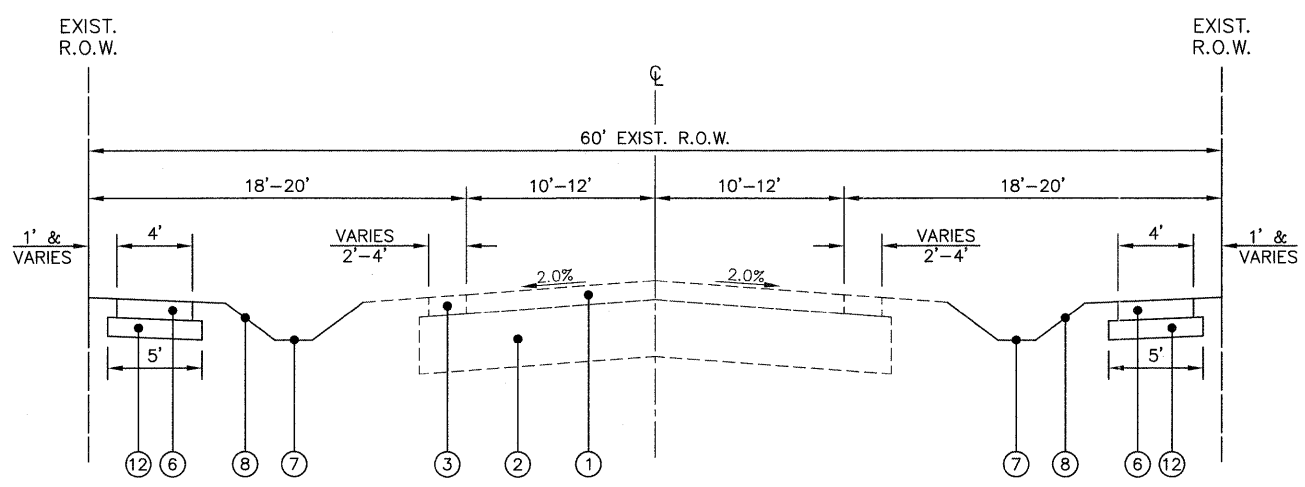
F.A.U. RTE.	SECTION	COUNTY	TOTAL SHEETS	SHEET NO.
N/A	10-00010-00-SW	DEKALB	11	4
CONTRACT NO. 87457				



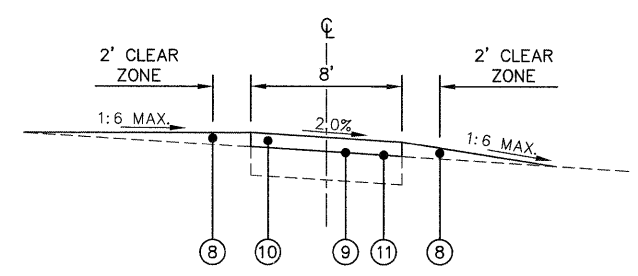
EXISTING TYPICAL CROSS-SECTION
 FROM STA 100+00 TO STA 139+60, MILLER AVENUE
 FROM STA 200+00 TO STA 209+00, VIEW STREET
 FROM STA 300+80 TO STA 303+30, COSTER PLACE
 N.T.S.



EXISTING TYPICAL CROSS-SECTION
 BIKE PATH
 FROM STA 400+20 TO STA 410+30
 N.T.S.



PROPOSED TYPICAL CROSS-SECTION
 FROM STA 100+00 TO STA 139+60, MILLER AVENUE
 FROM STA 200+00 TO STA 209+00, VIEW STREET
 FROM STA 300+80 TO STA 303+30, COSTER PLACE
 N.T.S.



PROPOSED TYPICAL CROSS-SECTION
 BIKE PATH
 FROM STA 400+20 TO STA 410+30
 N.T.S.

LEGEND	
① EXISTING 4" ASPHALT PAVEMENT	⑧ CLASS 1 SEEDING, FERTILIZER AND EROSION CONTROL BLANKET
② EXISTING 12" AGGREGATE BASE COURSE	⑨ PREPARATION OF BASE
③ EXISTING AGGREGATE SHOULDER	⑩ HOT-MIX ASPHALT SURFACE COURSE, MIX "C", N30, 2"
④ EARTH EXCAVATION *	⑪ BITUMINOUS MATERIALS (PRIME COAT)
⑤ EXISTING 6" AGGREGATE BIKE PATH	⑫ AGGREGATE BASE COURSE, TYPE B, 4" *
⑥ PCC SIDEWALK 5 INCH *	
⑦ GRADING AND SHAPING DITCHES	

* SIDEWALK ON LEFT ON COSTER PLACE ONLY

Hot-Mix Asphalt Mixtures Requirement Table

	HMA Driveway (3") and Bike Path (2")	Class D Patches, 4"	Hot-Mix Replacement Over Patches (2")
PG Grade	PG58-22	PG58-22	PG58-22
Design Air Voids	3.0%@N30	4.0%@N50	4.0%@N50
Mixture Composition	IL-9.5	IL-19.0	IL-9.5
Friction Aggregate	Mixture C	Mixture C	Mixture C
Density Test Method	Growth Curve	Growth Curve	Growth Curve

Plotted: February 9, 2012 @ 3:28 PM By: Kris Fung - Tab: 04 Section - 22x34

COPYRIGHT © 2012 ENGINEERING ENTERPRISES, INC.

Engineering Enterprises, Inc.
 CONSULTING ENGINEERS
 52 Wheeler Road
 Sugar Grove, Illinois 60554
 630.466.6700 / www.eeiweb.com

VILLAGE OF HINCKLEY
 DEKALB COUNTY, ILLINOIS

NO.	DATE	REVISIONS
1	2/1/12	REVISED PER IDOT COMMENTS FROM 12/14/11

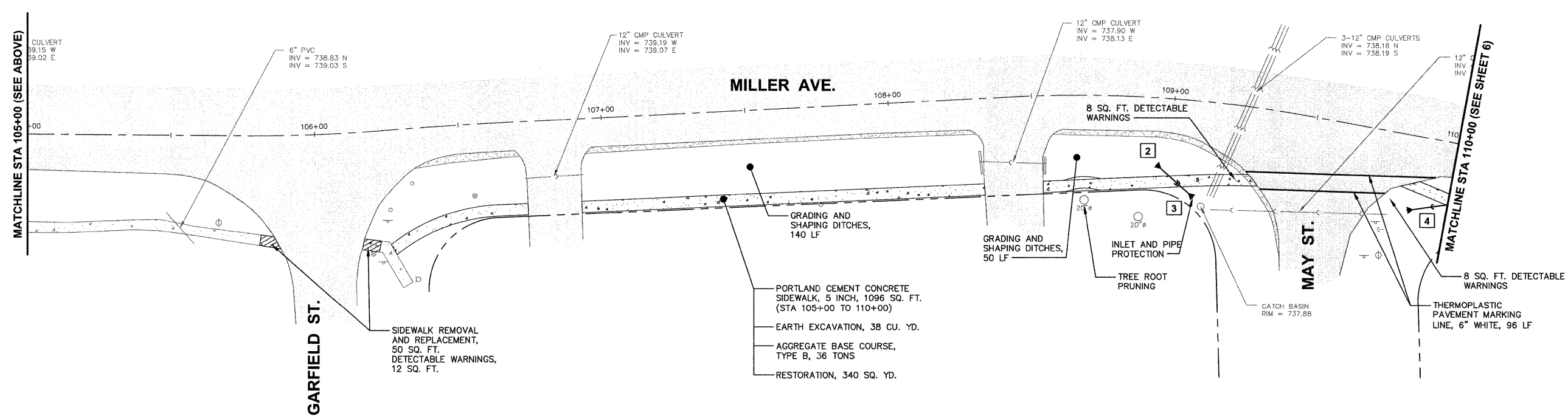
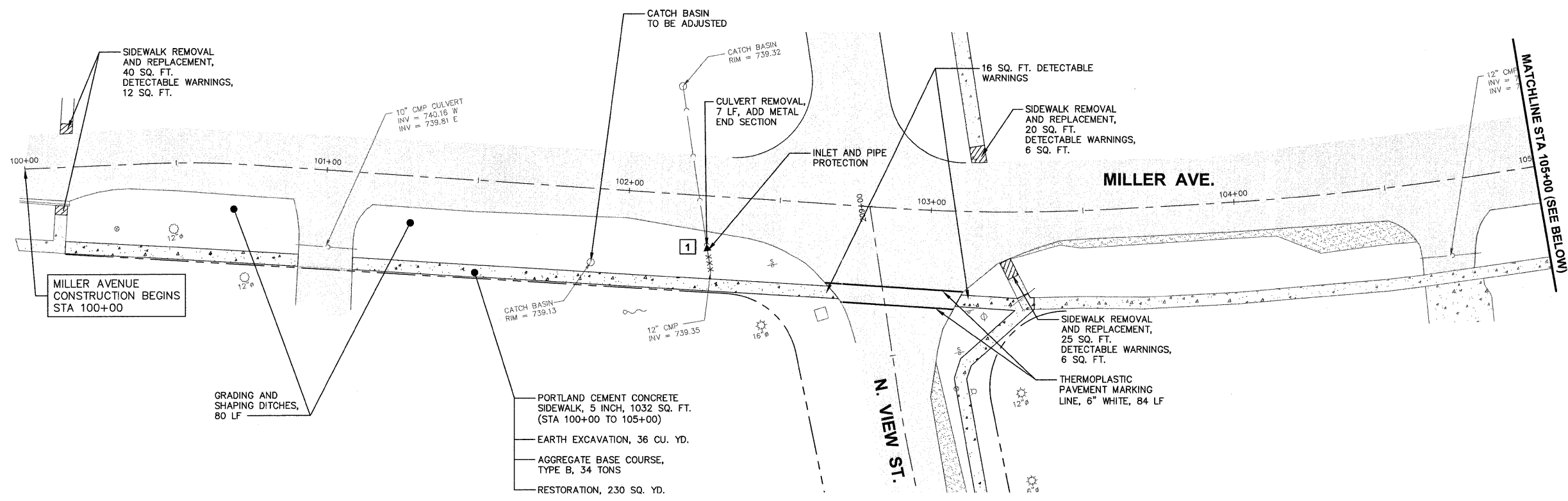
SAFE ROUTES TO SCHOOL IMPROVEMENTS

TYPICAL SECTIONS

DATE:	NOVEMBER 2011
PROJECT NO:	H10804
FILE:	H10804-CVR
SHEET	4 OF 11

Path:H:\BDRGPROV\H10804\DWG\DWG_FINAL_ENG\H10804-CVR

F.A.U. RTE.	SECTION	COUNTY	TOTAL SHEETS	SHEET NO.
N/A	10-00010-00-SW	DEKALB	11	5
CONTRACT NO. 07457				



Plotted: February 9, 2012 @ 3:28 PM By: Kris Pung - Tab: 05 Miller 22x34
 COPYRIGHT © 2012 ENGINEERING ENTERPRISES, INC.

Engineering Enterprises, Inc.
 CONSULTING ENGINEERS
 52 Wheeler Road
 Sugar Grove, Illinois 60554
 630.466.6700 / www.eeiweb.com

VILLAGE OF HINCKLEY
 DEKALB COUNTY, ILLINOIS

NO.	DATE	REVISIONS
1	2/1/12	REVISED PER IDOT COMMENTS FROM 12/14/11

SAFE ROUTES TO SCHOOL
 VILLAGE OF HINCKLEY

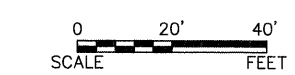
MILLER AVENUE
 STA 100+00 TO STA 110+00

DATE:	NOVEMBER 2011
PROJECT NO:	HI0804
FILE:	HI0804-PLAN
SHEET	5 OF 11

Path: H:\S0505\FRQA\HI0804\DWG\FINAL_ENG\HI0804-PLAN

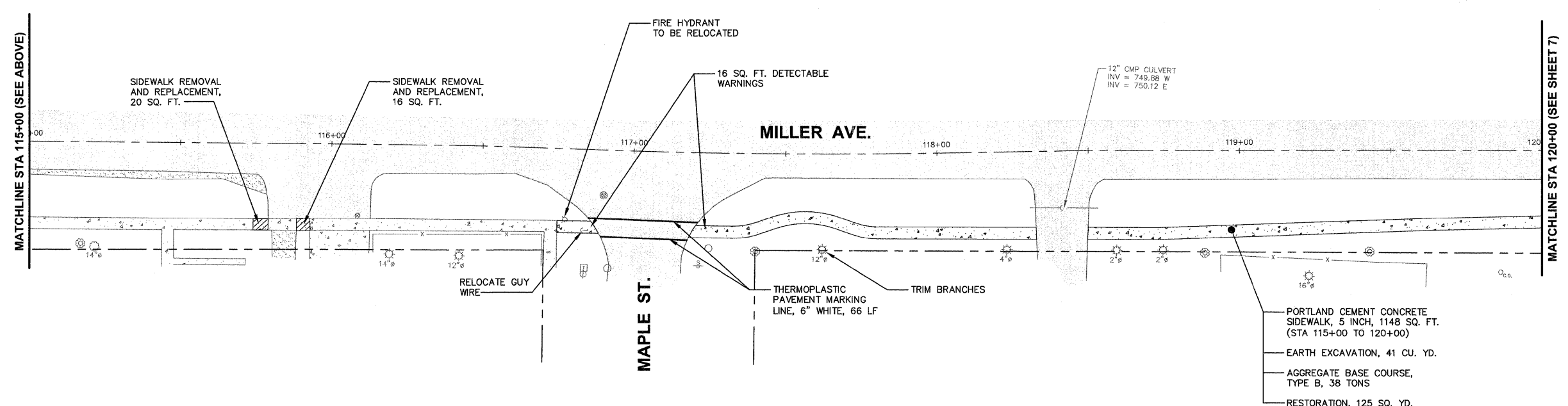
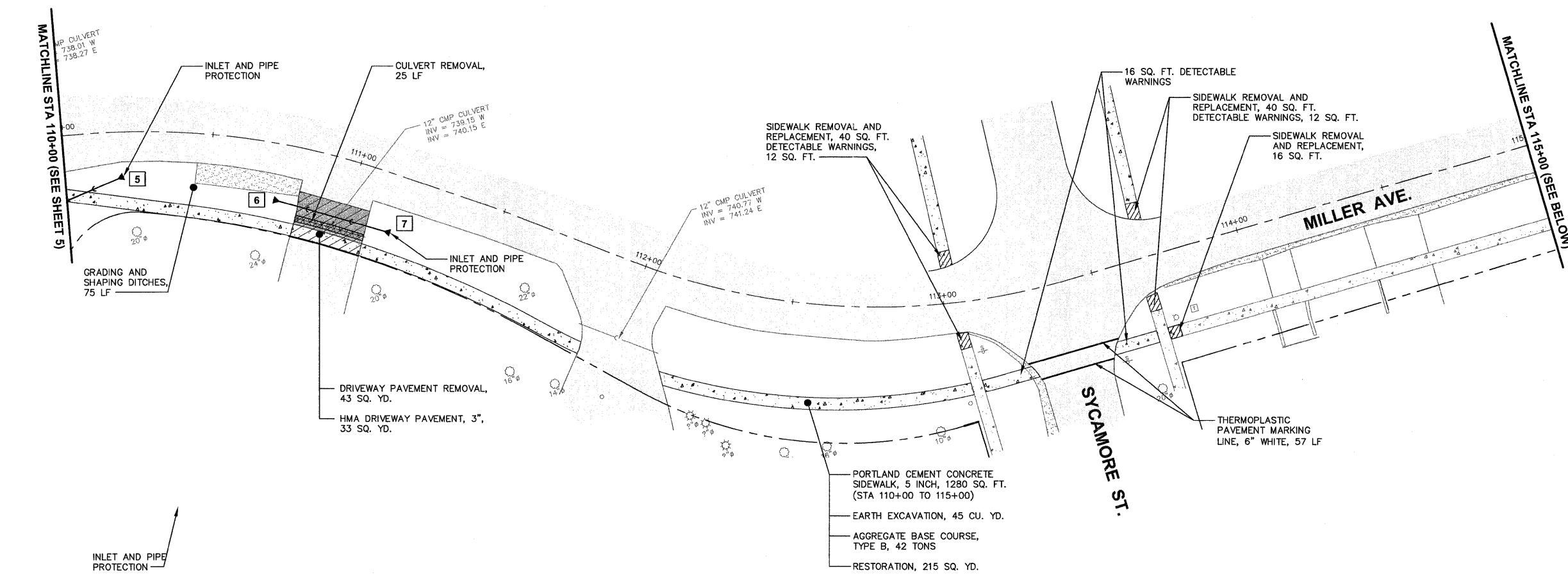
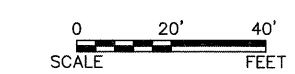
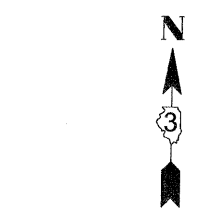
F.A.U. RTE.	SECTION	COUNTY	TOTAL SHEETS	SHEET NO.
N/A	10-00010-00-SW	DEKALB	11	6

CONTRACT NO. 87457



STORM SEWER SCHEDULE

- 5 METAL END SECTION 12" STA 110+20, 14.81' RT. INV = 738.50
- 6 METAL END SECTION 12" STA 110+73.68, 18.67' RT. INV = 739.20
40 LF PIPE CULVERTS, CLASS C, 12" TYPE 1 @ 2.00% TRENCH BACKFILL, 3 CU. YD.
- 7 METAL END SECTION 12" STA 111+16.31, 18.93' RT. INV = 740.00



Plotted: February 3, 2012 @ 8:24 AM By: Kris Plung - Job: 06 Miller 22x34

COPYRIGHT © 2012 ENGINEERING ENTERPRISES, INC.

Engineering Enterprises, Inc.
CONSULTING ENGINEERS
52 Wheeler Road
Sugar Grove, Illinois 60554
630.466.6700 / www.eeiweb.com

VILLAGE OF HINCKLEY
DEKALB COUNTY, ILLINOIS

NO.	DATE	REVISIONS
1	2/1/12	REVISED PER IDOT COMMENTS FROM 12/14/11

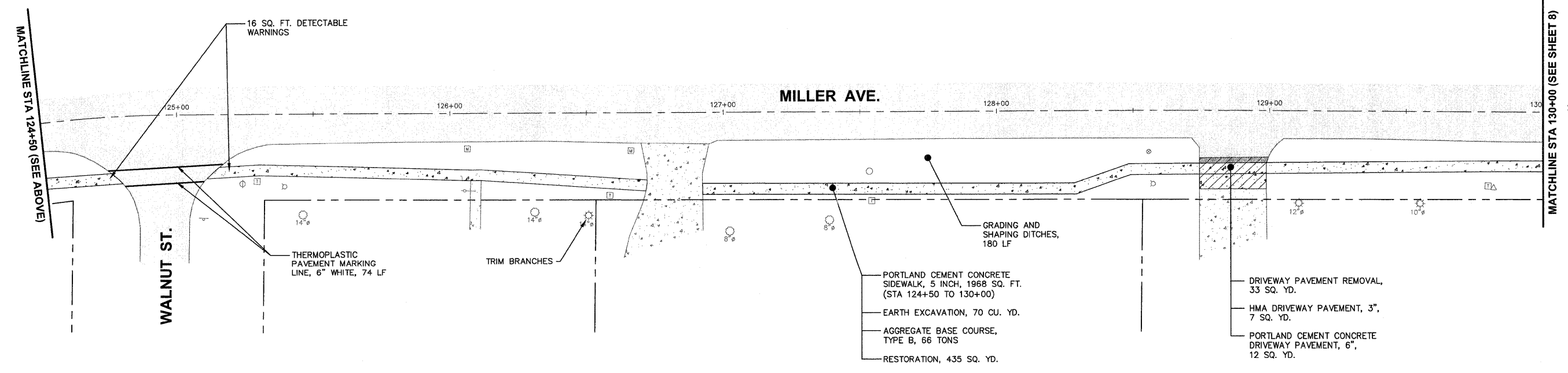
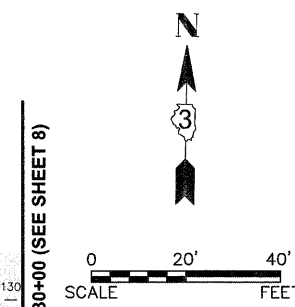
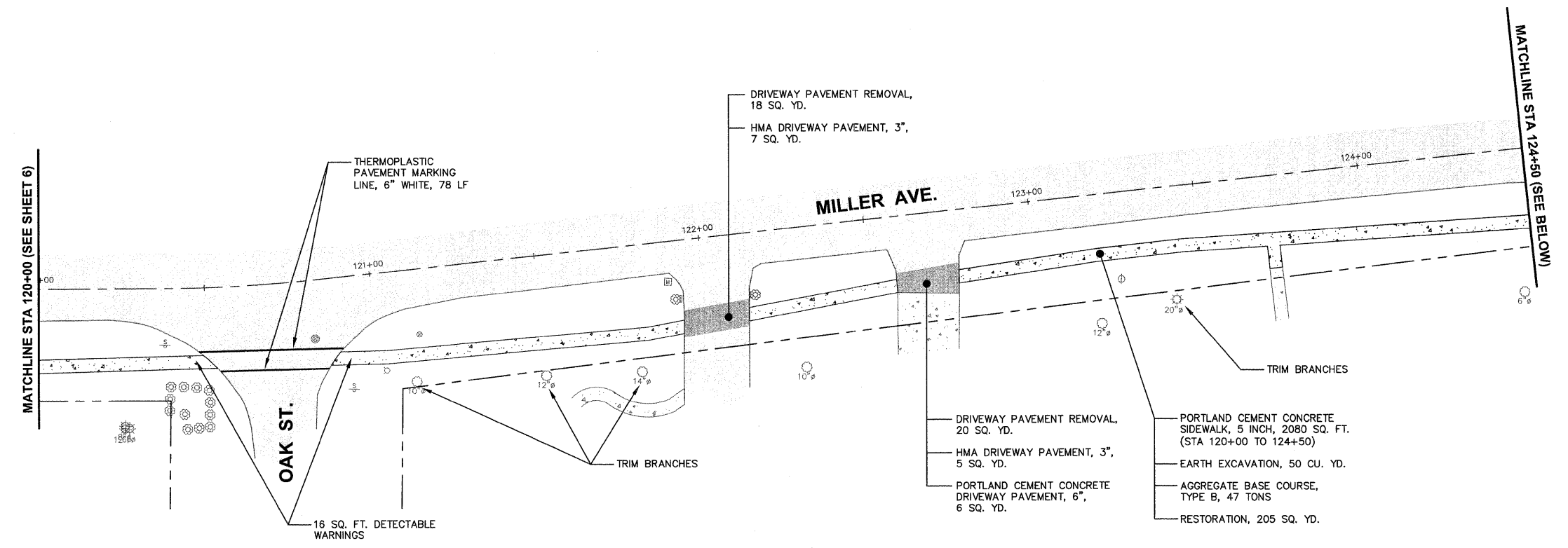
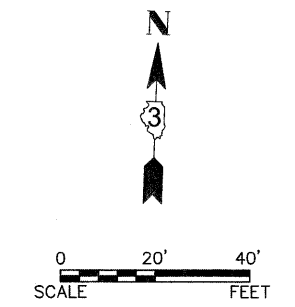
SAFE ROUTES TO SCHOOL
VILLAGE OF HINCKLEY

MILLER AVENUE
STA 110+00 TO STA 120+00

DATE:	NOVEMBER 2011
PROJECT NO.:	HI0804
FILE:	HI0804-PLAN
SHEET	6 OF 11

Path: H:\5558\PROJ\10804\DWG\FINAL_ENG\HI0804-PLAN

F.A.U. RTE.	SECTION	COUNTY	TOTAL SHEETS	SHEET NO.
N/A	10-00010-00-SW	DEKALB	11	7
CONTRACT NO. 87457				



Plotted: February 9, 2012 @ 3:29 PM By: Kris Pung - Tab: 07 Miller 22x34

COPYRIGHT © 2012 ENGINEERING ENTERPRISES, INC.

Engineering Enterprises, Inc.
 CONSULTING ENGINEERS
 52 Wheeler Road
 Sugar Grove, Illinois 60554
 630.466.6700 / www.eeiweb.com

VILLAGE OF HINCKLEY
 DEKALB COUNTY, ILLINOIS

NO.	DATE	REVISIONS
1	2/1/12	REVISED PER IDOT COMMENTS FROM 12/14/11

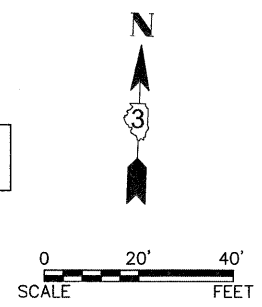
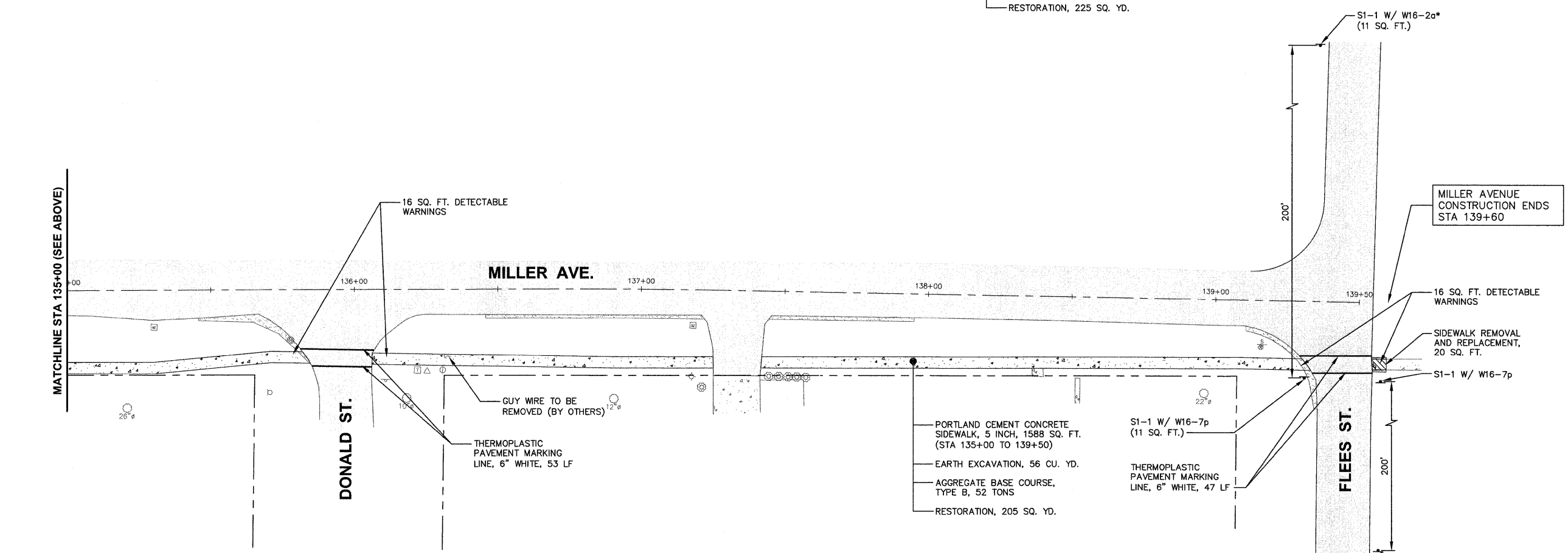
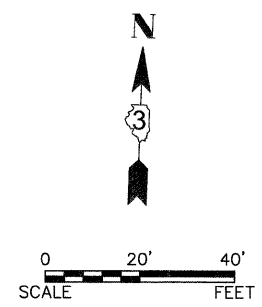
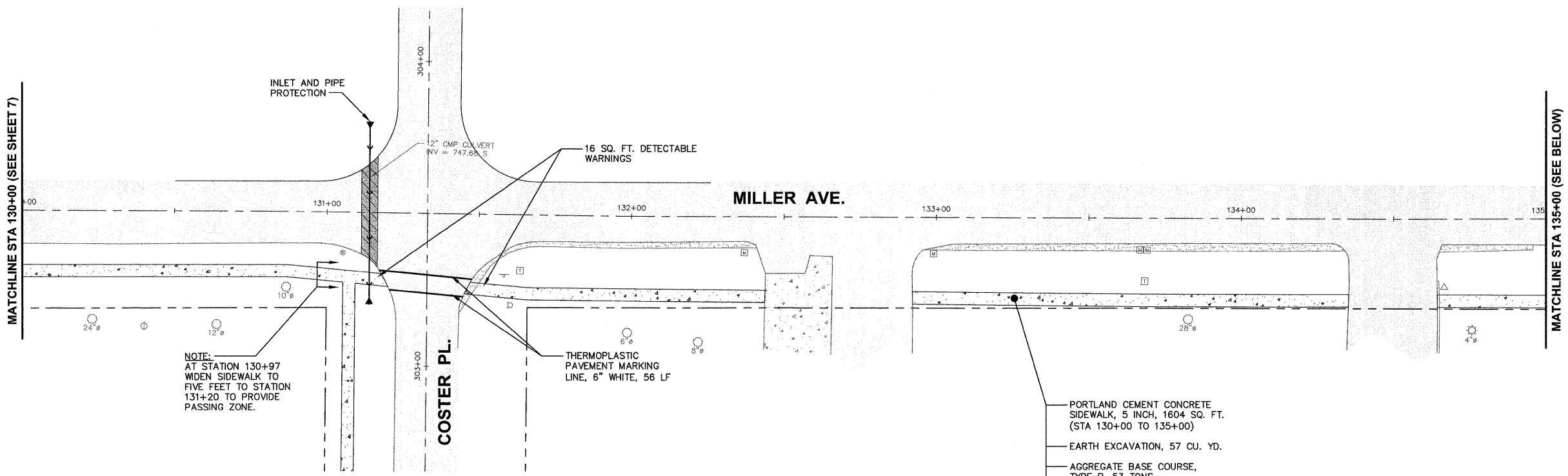
SAFE ROUTES TO SCHOOL
 VILLAGE OF HINCKLEY

MILLER AVENUE
 STA 120+00 TO STA 130+00

DATE:	NOVEMBER 2011
PROJECT NO:	H10804
FILE:	H10804-PLAN
SHEET	7 OF 11

Path: H:\2012\PROJECTS\10804\DWG\FINAL ENCL\H10804-PLAN

F.A.U. RTE.	SECTION	COUNTY	TOTAL SHEETS	SHEET NO.
N/A	10-00010-00-SW	DEKALB	11	8
CONTRACT NO. 87457				



* W16-2a SHALL BE MARKED WITH 200 FT. THE LOCATION SHALL BE FIELD VERIFIED PRIOR TO INSTALLATION.

Plot: February 3, 2012 @ 8:26 AM By: Kris Pung - Tab: 08 Miller 22x34

Engineering Enterprises, Inc.
CONSULTING ENGINEERS
52 Wheeler Road
Sugar Grove, Illinois 60554
630.466.6700 / www.eeiweb.com

VILLAGE OF HINCKLEY
DEKALB COUNTY, ILLINOIS

NO.	DATE	REVISIONS
1	2/1/12	REVISED PER IDOT COMMENTS FROM 12/14/11

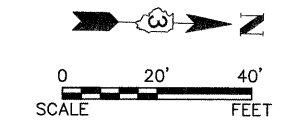
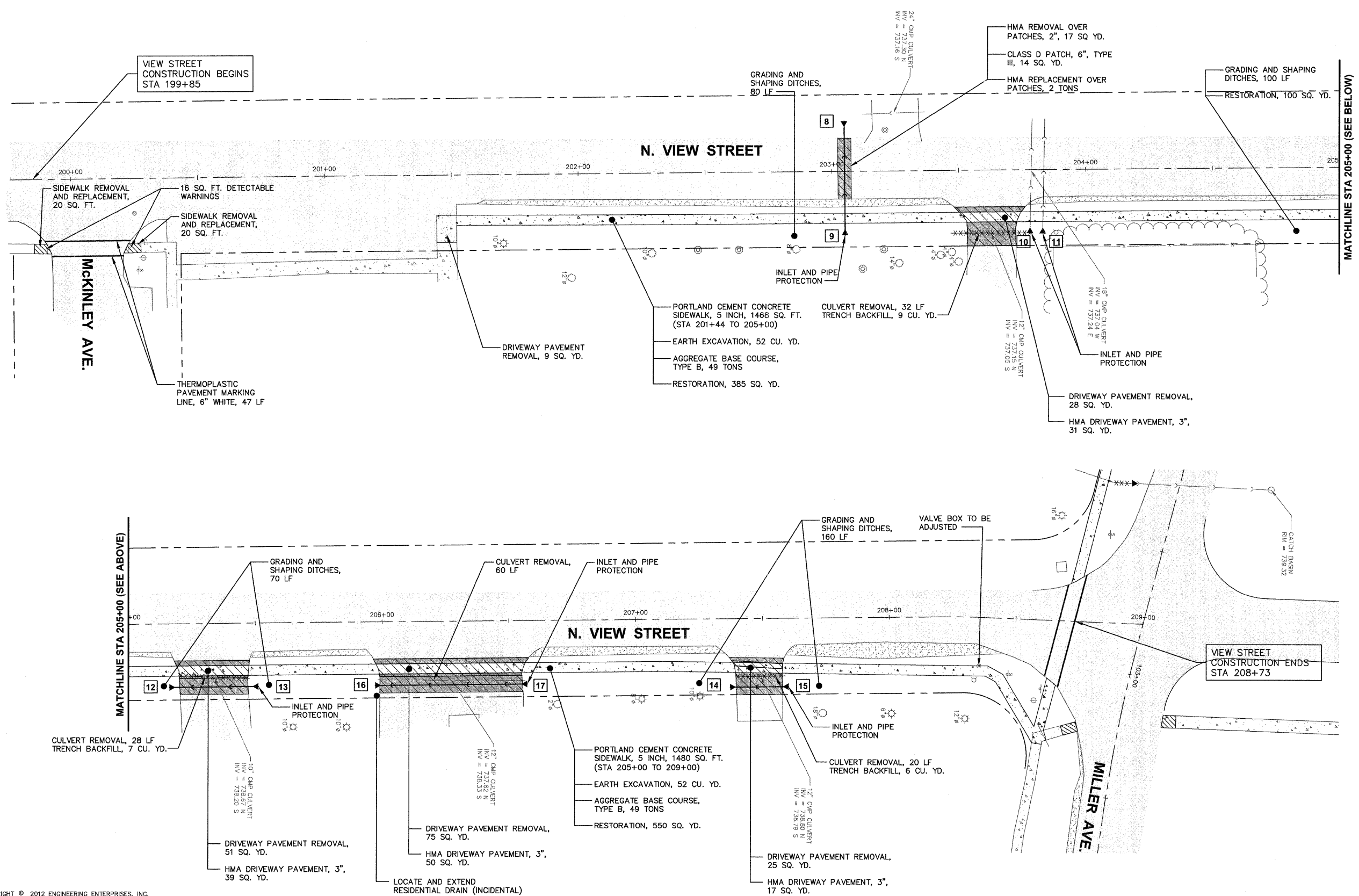
SAFE ROUTES TO SCHOOL
VILLAGE OF HINCKLEY

MILLER AVENUE
STA 130+00 TO STA 139+50

DATE:	NOVEMBER 2011
PROJECT NO:	HI0804
FILE:	HI0804-PLAN
SHEET	8 OF 11

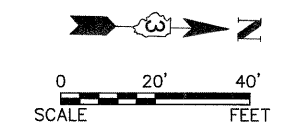
Path: H:\3526\GROU\HI0804\DWG\DWG_FINAL_ENG\HI0804-PLAN

F.A.U. RTE.	SECTION	COUNTY	TOTAL SHEETS	SHEET NO.
N/A	10-00010-00-SW	DEKALB	11	9
CONTRACT NO. 87457				



STORM SEWER SCHEDULE

- 8 METAL END SECTION 12" STA 203+05, 19.68' LT. INV = 737.20
- 9 METAL END SECTION 12" STA 203+05, 25.32' RT. INV = 737.44
47 LF PIPE CULVERTS, CLASS C, 12" TYPE 1 @ 0.50%
TRENCH BACKFILL, 5 CU. YD.
- 10 *METAL END SECTION 18" STA 203+78, 25.18' RT. INV = XXX.XX
- 11 *METAL END SECTION 15" STA 203+83, 25.32' RT. INV = XXX.XX
- 12 METAL END SECTION 12" STA 205+15.95, 25.00' RT. INV = 737.80
35 LF PIPE CULVERTS, CLASS C, 12" TYPE 1 @ 0.50%
- 13 METAL END SECTION 12" STA 205+50.95, 25.00' RT. INV = 737.80
- 14 METAL END SECTION 12" STA 207+37, 27.00' RT. INV = 738.72
24 LF PIPE CULVERTS, CLASS C, 12" TYPE 1 @ 0.30%
- 15 METAL END SECTION 12" STA 207+60, 27.00' RT. INV = 738.80
- 16 METAL END SECTION 12" STA 205+97, 25.00' RT. INV = 738.12
- 17 METAL END SECTION 12" STA 206+57, 25.00' RT. INV = 738.30
60 LF PIPE CULVERTS, CLASS C, 12" TYPE 1 @ 0.30%
TRENCH BACKFILL, 18 CU. YD.



*INCLUDED IN THE COST OF THE 15" AND 18" END SECTIONS SHALL BE AN ADDITIONAL 10' SECTION OF EACH PIPE AND ANY NECESSARY COUPLING AND REPAIR TO THE EXISTING END OF THE PIPE.

Plotted: February 3, 2012 @ 8:26 AM By: Kris Pung - Tab: 09 View 22x34

COPYRIGHT © 2012 ENGINEERING ENTERPRISES, INC.

Engineering Enterprises, Inc.
CONSULTING ENGINEERS
52 Wheeler Road
Sugar Grove, Illinois 60554
630.466.6700 / www.eeiweb.com

VILLAGE OF HINCKLEY
DEKALB COUNTY, ILLINOIS

NO.	DATE	REVISIONS
1	2/1/12	REVISED PER IDOT COMMENTS FROM 12/14/11

SAFE ROUTES TO SCHOOL
VILLAGE OF HINCKLEY

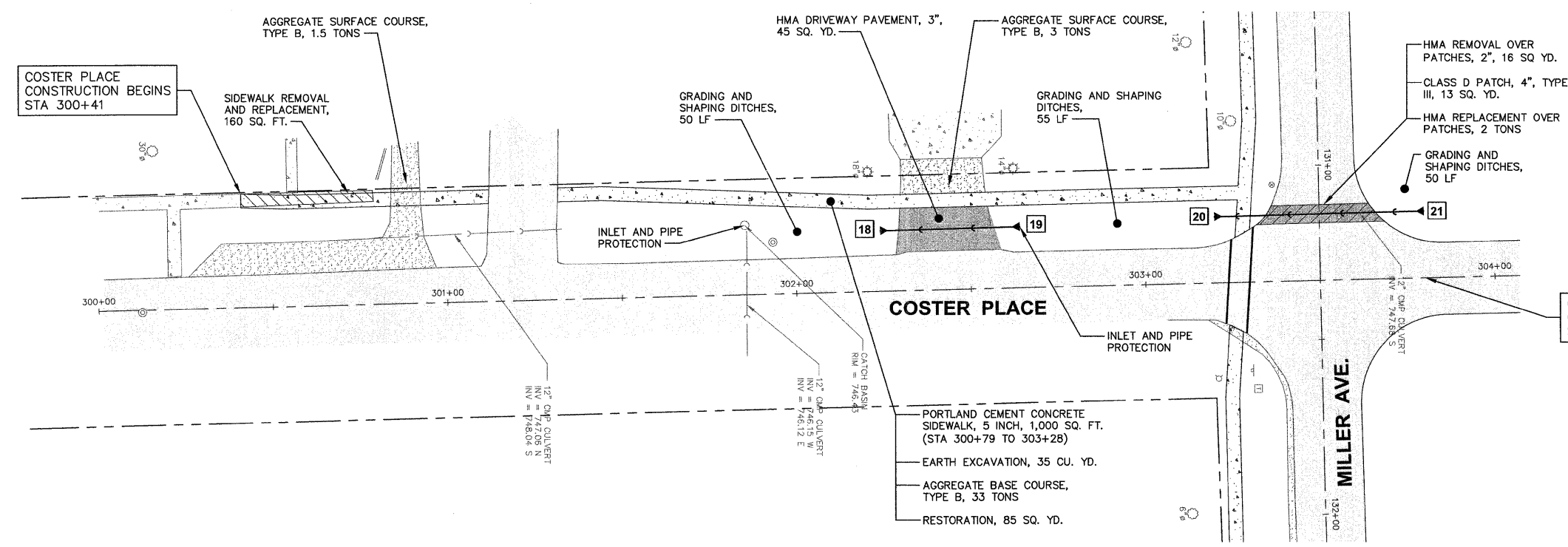
NORTH VIEW STREET
STA 200+00 TO STA 209+00

DATE:	NOVEMBER 2011
PROJECT NO:	HI0804
FILE:	HI0804-PLAN
SHEET	9 OF 11

Path: H:\S05KPR04\HI0804\DWG\FINAL_ENG\HI0804-PLAN

F.A.U. ETE.	SECTION	COUNTY	TOTAL SHEETS	SHEET NO.
N/A	10-00010-00-SW	DEKALB	11	10

CONTRACT NO. 87457



STORM SEWER SCHEDULE

- 18** METAL END SECTION 12"
STA 302+24.29, 17.33' LT.
INV = 746.62
40 LF PIPE CULVERTS, CLASS C, 12"
TYPE 1 @ 0.30%
TRENCH BACKFILL, 5 CU. YD.
- 19** METAL END SECTION 12"
STA 302+64.29, 17.46 LT.
INV = 746.74
- 20** METAL END SECTION 12"
STA 303+20.07, 18.90' LT.
INV = 747.02
60 LF PIPE CULVERTS, CLASS C, 12"
TYPE 1 @ 0.30%
TRENCH BACKFILL, 9 CU. YD.
- 21** METAL END SECTION 12"
STA 303+80.07, 19.10' LT.
INV = 747.20

Plotted: February 3, 2012 @ 8:26 AM By: Kris Pung - Tab: 10 Coster 22x34

Engineering Enterprises, Inc.
CONSULTING ENGINEERS
52 Wheeler Road
Sugar Grove, Illinois 60554
630.466.6700 / www.eeiweb.com

VILLAGE OF HINCKLEY
DEKALB COUNTY, ILLINOIS

NO.	DATE	REVISIONS
1	2/1/12	REVISED PER IDOT COMMENTS FROM 12/14/11

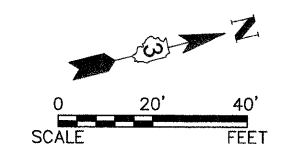
SAFE ROUTES TO SCHOOL
VILLAGE OF HINCKLEY

COSTER PLACE
STA 300+00 TO STA 303+50

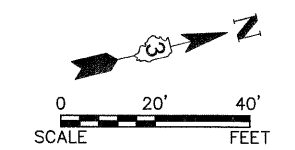
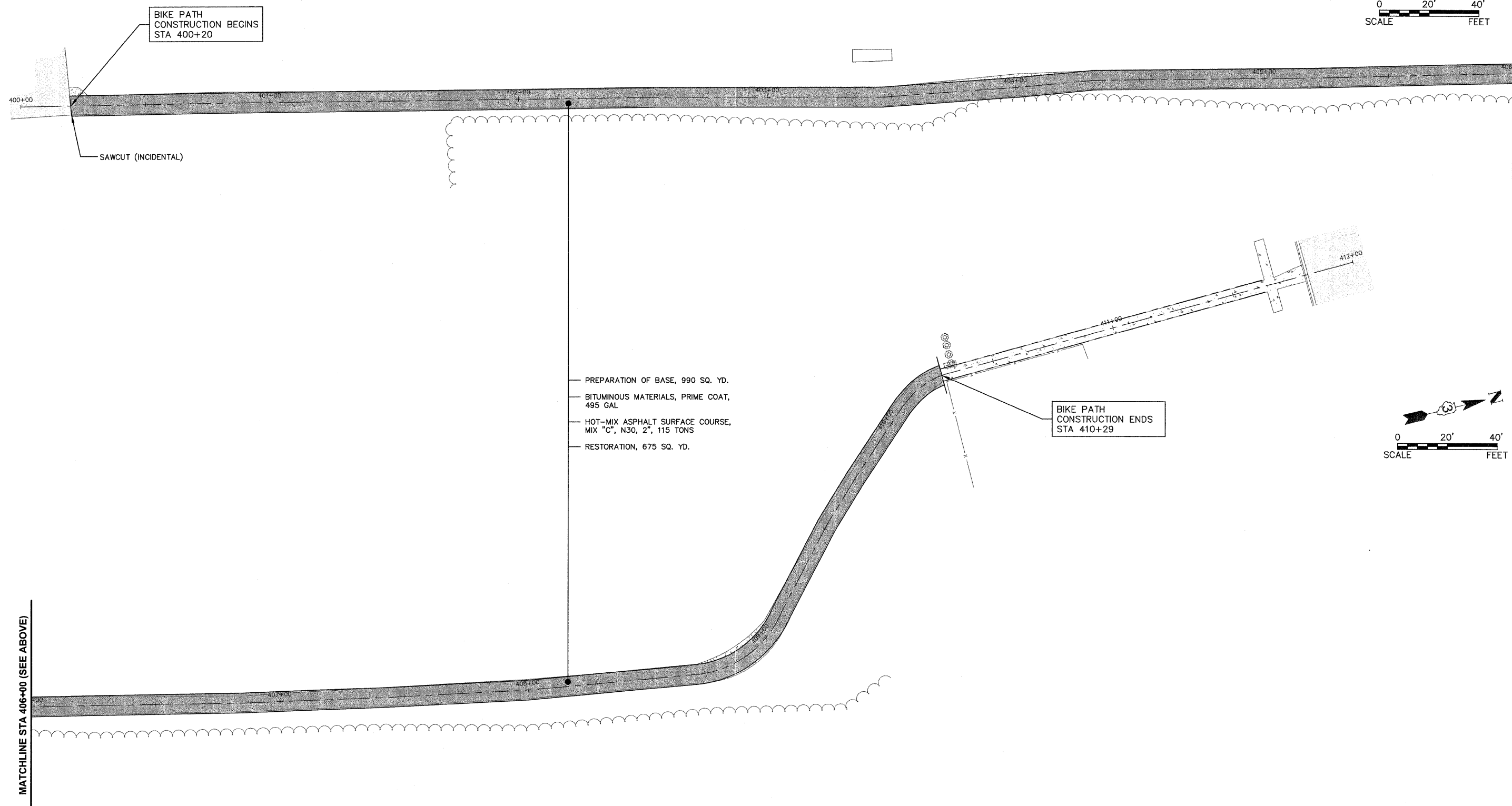
DATE:	NOVEMBER 2011
PROJECT NO.:	HI0804
FILE:	HI0804-PLAN
SHEET	10 OF 11

Path: H:\35356PROJ\HI0804\DWG\DWG_FINAL_ENG\HI0804-PLAN

F.A.U. RTE.	SECTION	COUNTY	TOTAL SHEETS	SHEET NO.
N/A	10-00010-00-SW	DEKALB	11	11
CONTRACT NO. 87457				



MATCHLINE STA 406+00 (SEE BELOW)



Plotted: February 3, 2012 @ 9:16 AM By: Kris Pung - Tab: 11 Bike Path 22x34

COPYRIGHT © 2012 ENGINEERING ENTERPRISES, INC.

Engineering Enterprises, Inc.
CONSULTING ENGINEERS
52 Wheeler Road
Sugar Grove, Illinois 60554
630.466.6700 / www.eeiweb.com

VILLAGE OF HINCKLEY
DEKALB COUNTY, ILLINOIS

NO.	DATE	REVISIONS
1	2/1/12	REVISED PER IDOT COMMENTS FROM 12/14/11

SAFE ROUTES TO SCHOOL
VILLAGE OF HINCKLEY

BIKE PATH
STA 400+00 TO STA 412+00

DATE:	NOVEMBER 2011
PROJECT NO:	HI0804
FILE:	HI0804-PLAN
SHEET	11 OF 11

Path: H:\S05KPR01\HI0804\DWG\DWG_FINAL_ENG\HI0804-PLAN