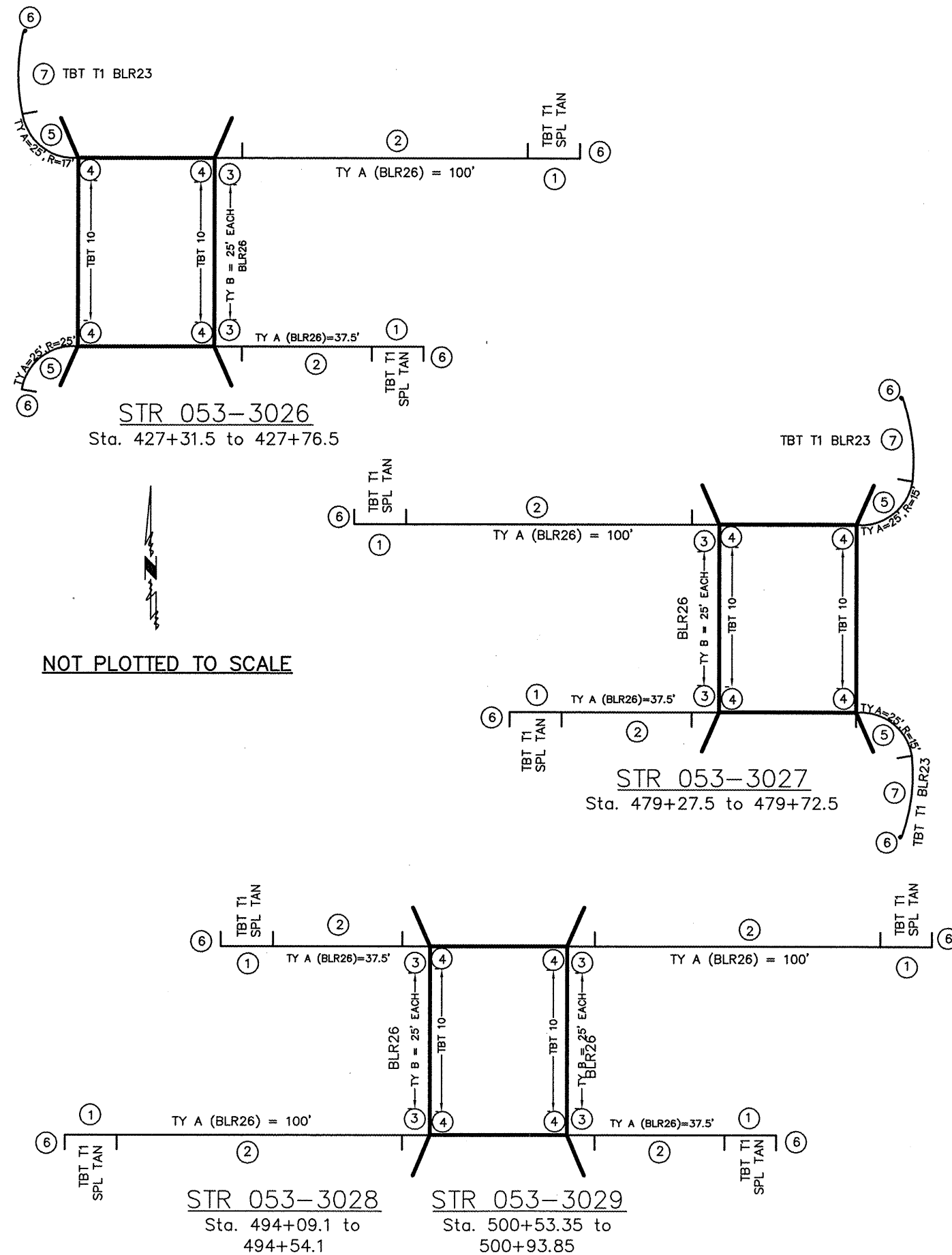


ROUTE NO.	SECTION	COUNTY	TOTAL SHEETS	SHEET NO.
1362	06-00100-02-RS	LIVINGSTON	5	4

PROJECT NO. RS-1362(115)



NOT PLOTTED TO SCALE

Z:\COVWork\ROAD Projects\00100RS2-OcovarRd-East\Planning\ACAD\Plans-OcovarRd-4.8mi.dwg, 2/16/2012 4:16:34 PM

GUARDRAIL SCHEDULE

LOCATION NUMBER	TRAF BARRIER TERMINAL TYPE 1 SPL TAN (EACH)	TRAF BARRIER TERMINAL TYPE 1 BLR 23 (EACH)	STEEL PLATE BEAM GUARD RAIL TYPE A BLR 26 (FOOT)	STEEL PLATE BEAM GUARD RAIL TYPE B BLR 26 (FOOT)	STEEL PLATE BEAM GUARD RAIL TYPE A (SPL) (FOOT)	TRAF BARRIER TERMINAL TYPE 10 (EACH)	TERMINAL MARKER DA (EACH)	
053-3026								
1	TBT 1 SPL TAN	2.0						
2	TY A - BLR 26		137.50					
3	TY B - BLR 26			50.00				
4	TBT 10					4.0		
5	TY A (SPL) Radius				50.0			
6	TERMINAL MARKER DA						4.0	
7	TBT TY 1 (BLR 23)	1.0						
053-3027								
1	TBT 1 SPL TAN	2.0						
2	TY A - BLR 26		137.50					
3	TY B - BLR 26			50.00				
4	TBT 10					4.0		
5	TY A (SPL) Radius				50.0			
6	TERMINAL MARKER DA						4.0	
7	TBT TY 1 (BLR 23)	2.0						
053-3028								
1	TBT 1 SPL TAN	4.0						
2	TY A - BLR 26		275.00					
3	TY B - BLR 26			100.00				
4	TBT 10					4.0		
6	TERMINAL MARKER DA						4.0	
053-3029								
1	TBT 1 SPL TAN	4.0						
2	TY A - BLR 26		325.00					
3	TY B - BLR 26			100.00				
4	TBT 10					4.0		
6	TERMINAL MARKER DA						4.0	
TOTAL QUANTITIES		12.0	3.00	875.00	300.00	100.00	16.0	16.0

Note - Guardrail Reflectors shall be provided by the County, but installed by the Contractor. The installation shall be considered incidental to guardrail pay items. The reflector shall mount within the channel section of the guardrail using the Post Bolt & Standard hex nut. See Std. 635006 for placement.