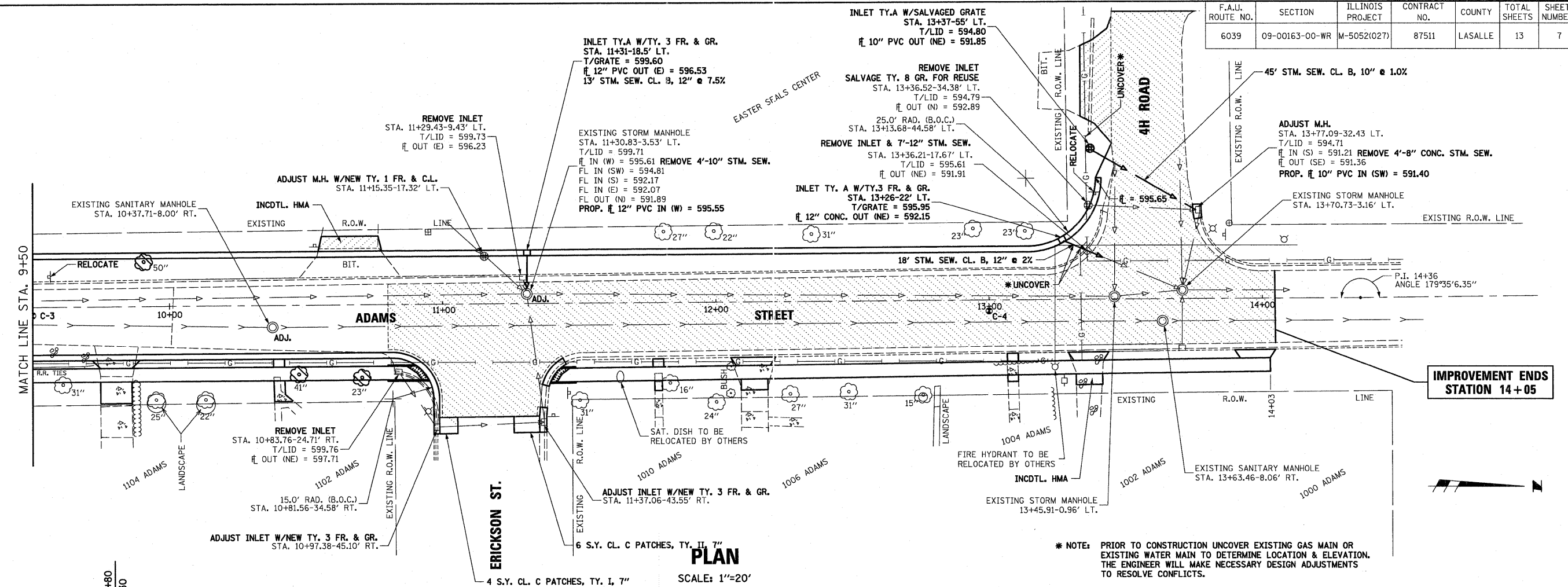


ADAMS ST. WIDENING AND RESURFACING

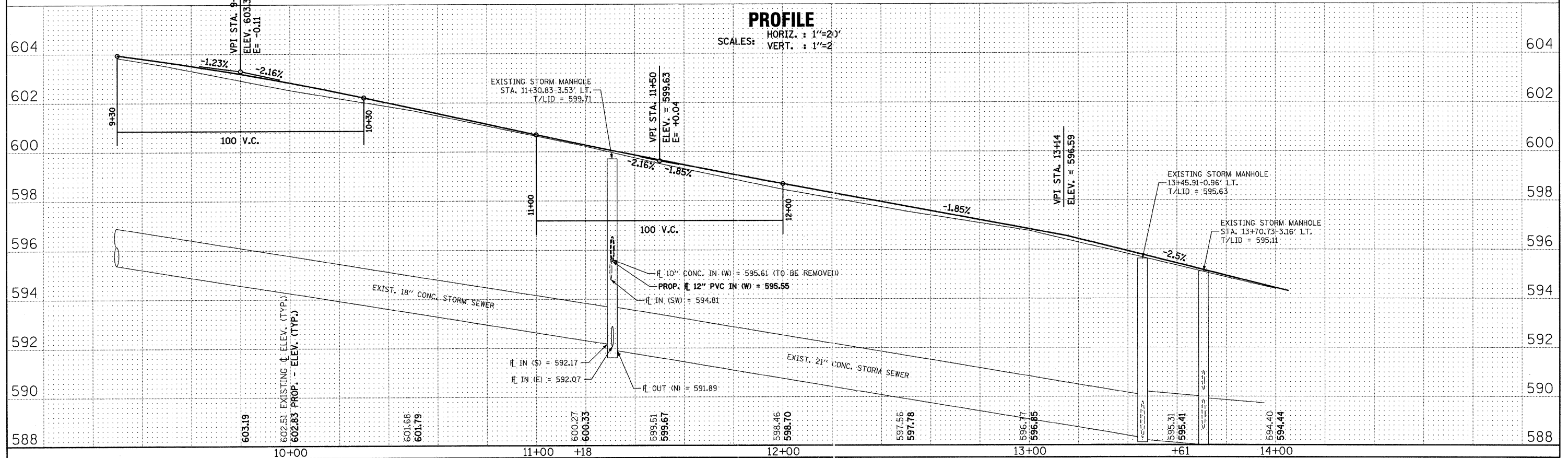
F.A.U. ROUTE NO.	SECTION	ILLINOIS PROJECT	CONTRACT NO.	COUNTY	TOTAL SHEETS	SHEET NUMBER
6039	09-00163-00-WR	M-5052(027)	87511	LASALLE	13	7



PLAN

SCALE: 1"=20'

* NOTE: PRIOR TO CONSTRUCTION UNCOVER EXISTING GAS MAIN OR EXISTING WATER MAIN TO DETERMINE LOCATION & ELEVATION. THE ENGINEER WILL MAKE NECESSARY DESIGN ADJUSTMENTS TO RESOLVE CONFLICTS.



PROFILE

HORIZ. : 1"=20'
VERT. : 1"=2'