

F.A.U. ROUTE NO.	SECTION	ILLINOIS PROJECT	CONTRACT NO.	COUNTY	TOTAL SHEETS	SHEET NUMBER
6039	09-00163-00-WR	M-5052(027)	87511	LASALLE	13	1

INDEX OF SHEETS

04-27-12 LETTING ITEM 051

- 1 COVER SHEET
- 2 GENERAL NOTES, LEGEND & SUMMARY OF QUANTITIES
- 3 TYPICAL SECTIONS & PAVEMENT DESIGN
- 4 SCHEDULE OF QUANTITIES
- 5-7 PLAN SHEETS
- 8 STORM WATER POLLUTION PREVENTION SITE PLAN & PAVEMENT MARKING DETAIL
- 9-13 CROSS SECTION SHEETS

STANDARDS

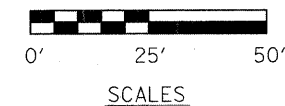
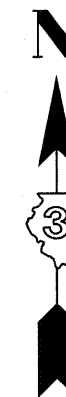
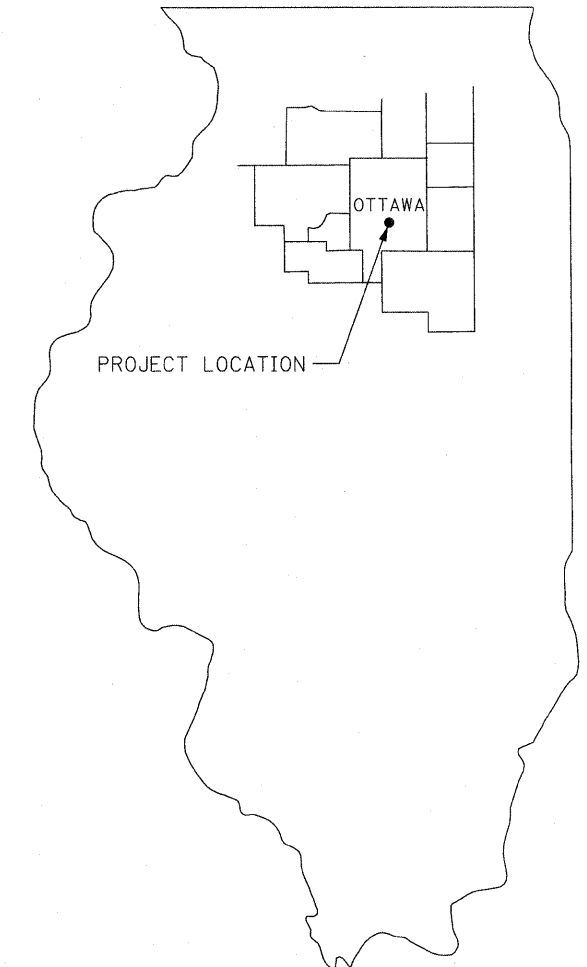
- 280001-06 TEMPORARY EROSION CONTROL SYSTEMS
- 424001-06 PERPENDICULAR CURB RAMPS FOR SIDEWALKS
- 424011 CORNER PARALLEL CURB RAMPS FOR SIDEWALKS
- 424016 MID-BLOCK CURB RAMPS FOR SIDEWALKS
- 442201-03 CLASS C AND D PATCHES
- 602301-03 INLET, TYPE A
- 602401-03 MANHOLE, TYPE A
- 602601-02 PRECAST REINFORCED CONCRETE FLAT SLAB TOP
- 602701-02 MANHOLE STEPS
- 604001-03 FRAME AND LIDS, TYPE 1
- 604006-04 FRAME AND GRATE, TYPE 3
- 604036-02 GRATE TYPE 8
- 606001-04 CONCRETE CURB TYPE B, AND COMBINATION CONCRETE CURB AND GUTTER
- 701501-06 URBAN LANE CLOSURE 2L, 2W, UNDIVIDED
- 701901-02 TRAFFIC CONTROL DEVICES

STATE OF ILLINOIS  
DEPARTMENT OF TRANSPORTATION

**PLANS FOR  
PROPOSED LOCAL AGENCY IMPROVEMENT  
SURFACE TRANSPORTATION PROGRAM – URBAN**

CITY OF OTTAWA - ADAMS STREET  
LASALLE COUNTY

ADAMS ST. - F.A.U. ROUTE 6039 SECTION 09-00163-00-WR  
PROJECT M-5052(027)  
JOB NO. C-93-031-12  
CONTRACT NO. 87511

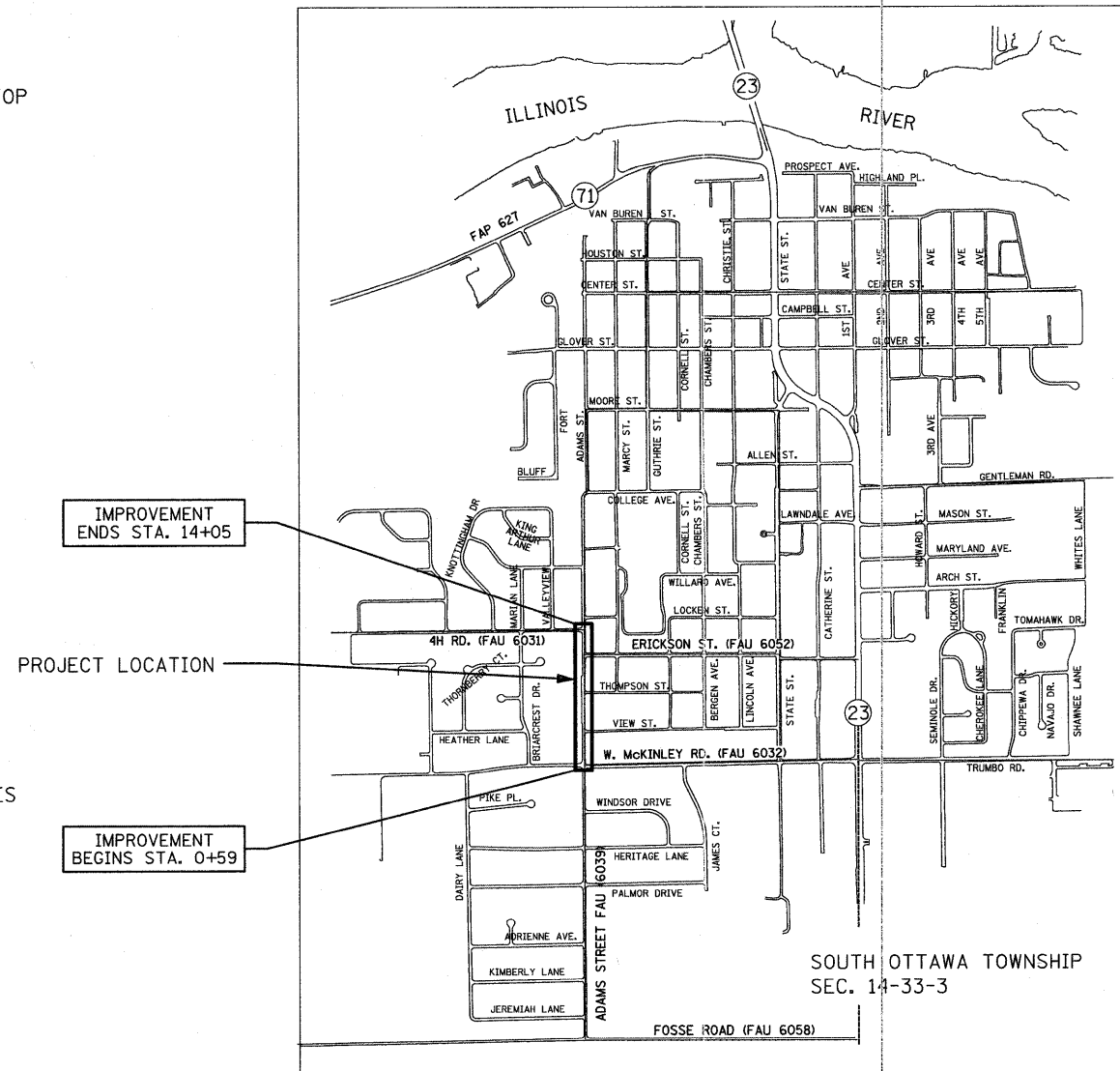


LOCATION MAP: NOT TO SCALE

TYPICAL SECTIONS: NOT TO SCALE

PLAN & PROFILE: HORIZ.: 1" = 20'  
VERT.: 1" = 2'

CROSS SECTIONS: HORIZ.: 1" = 5'  
VERT.: 1" = 2'



**ADAMS STREET**  
DESIGN FUNCTIONAL CLASSIFICATION - URBAN COLLECTOR  
STRUCTURAL DESIGN TRAFFIC - 1900 (2022)  
DESIGN SPEED - 30 MPH  
PLANS DEVELOPED IN ACCORDANCE WITH URBAN GUIDELINES OF THE BLRS MANUAL

J.U.L.I.E. SYSTEM - THE TOLL FREE TELEPHONE NUMBER FOR JOINT UTILITY INFORMATION FOR EXCAVATORS IS 1-800-892-0123

LOCATION MAP

GROSS & NET PROJECT LENGTH  
1,346 L.F. (0.25 MILE)

PLANS PREPARED BY <b>Renwick &amp; Associates, Inc., - Consulting Engineers</b> 1304 GEMINI CIRCLE, OTTAWA, ILLINOIS		APPROVED _____ 2012 <i>Paul M. Sallat</i> MAYOR, CITY OF OTTAWA
	ISSUE DATE 1/27/12	PASSED <b>2-8-2012</b> <i>[Signature]</i> PROJECT IMPLEMENTATION ENGINEER
	FILE NUMBER 09.2.10	RELEASING FOR BID BASED ON LIMITED REVIEW <b>2-8-2012</b> <i>[Signature]</i> DEPUTY DIRECTOR OF HIGHWAYS, REGION TWO ENGINEER STATE OF ILLINOIS DEPARTMENT OF TRANSPORTATION
	APPROVED D.C.B.	
	CHECKED A.M.R.	
	DRAWN R.T.F.	
SURVEYED R.C.T.	DATE 1/27/12	

F.A.U. ROUTE NO.	SECTION	ILLINOIS PROJECT	CONTRACT NO.	COUNTY	TOTAL SHEETS	SHEET NUMBER
6039	09-00163-00-WR	M-50521027)	87511	LASALLE	13	2

# GENERAL NOTES

- THE THICKNESS OF HOT-MIX ASPHALT ON THE PLANS IS THE NOMINAL THICKNESS. DEVIATIONS FROM THE NOMINAL THICKNESS WILL BE PERMITTED WHEN SUCH DEVIATIONS OCCUR DUE TO IRREGULARITIES IN THE EXISTING SURFACE ON WHICH THE HOT-MIX ASPHALT IS PLACED.
- THE FOLLOWING RATES OF APPLICATION HAVE BEEN ASSUMED IN CALCULATING PLAN QUANTITIES:
 

BIT. MATERIALS (PRIME COAT) RC-70	0.08	GAL/SQ YD
BIT. MATERIALS (PRIME COAT) MC-30	0.35	GAL/SQ YD
AGGREGATE (PRIME COAT)	0.001	TONS/SQ YD
HOT-MIX ASPHALT SURFACE COURSE, BINDER COURSE AND LEVELING BINDER	112	LBS/SQ YD/INCH
- ALL SAW CUTTING OF EXISTING PAVEMENTS, CURB & GUTTERS, DRIVEWAYS, AND SIDEWALKS, SHALL BE CONSIDERED INCIDENTAL TO THE CONTRACT. THE MINIMUM SAW CUT DEPTH SHALL BE AS FOLLOWS UNLESS OTHERWISE SPECIFIED:
 

ITEM(S)	MINIMUM DEPTH (IN.)
CONCRETE PAVEMENT, CURBS, GUTTERS, & DRIVEWAYS	3"
CONCRETE SIDEWALK	2"
HMA SURFACES	1-1/4"
- THE CONTRACTOR WILL PROVIDE FOR TEMPORARY DRAINAGE UNTIL THE FINAL SURFACE IS PLACED.
- EXISTING CASTINGS, FRAMES AND GRATES REMOVED AND NOT SCHEDULED FOR REUSE ARE THE PROPERTY OF THE CITY AND SHALL BE TRANSPORTED TO CITY FACILITIES AS DIRECTED BY THE CITY SUPERINTENDENT IN CHARGE OR THE ENGINEER.
- THE CONTRACTOR WILL PROTECT ALL TREES AND BUSHES FROM DAMAGE DUE TO HIS OPERATIONS UNLESS SCHEDULED FOR REMOVAL ON PLANS
- THE LOCATION OF EXISTING UNDERGROUND UTILITIES ARE SHOWN BASED IN LARGE PART FROM INFORMATION FURNISHED BY UTILITY COMPANIES AND OTHERS. THE ACTUAL LOCATION OR EXISTENCE MAY BE CONSIDERABLY DIFFERENT. THE ENGINEER DOES NOT WARRANT THE LOCATION OR ANY SPECIFIC INFORMATION CONCERNING UNDERGROUND UTILITIES. IT SHALL BE THE CONTRACTOR'S RESPONSIBILITY TO VERIFY THE CORRECTNESS OF THE SAME PRIOR TO THE START OF CONSTRUCTION BY UNCOVERING UNDERGROUND UTILITIES IN ALL LOCATIONS WHERE HE FEELS THE PROPOSED CONSTRUCTION MAY NEED TO BE ALTERED TO PREVENT CONFLICTS IN LINE, GRADE OR WORKING CLEARANCES. THE CONTRACTOR IS EXPECTED TO WORK ADJACENT TO, BENEATH, ABOVE AND IN CLOSE PROXIMITY TO ALL EXISTING UTILITIES. ANY NECESSARY CHANGES DURING CONSTRUCTION WILL BE DEALT WITH ON A CASE BY CASE BASIS.
 

SHOULD IT BE NECESSARY TO RELOCATE ANY EXISTING UNDERGROUND UTILITY TO PREVENT LINE OR GRADE CONFLICTS WITH THE NEW CONSTRUCTION, THE CONTRACTOR SHALL IMMEDIATELY ADVISE THE ENGINEER.
- THE CONTRACTOR SHALL BE RESPONSIBLE FOR PROTECTING UTILITY PROPERTY FROM CONSTRUCTION OPERATIONS AS OUTLINED IN ARTICLE 107.31 OF THE STANDARD SPECIFICATIONS. THE J.U.L.I.E. NUMBER IS 1-800-892-0123. A MINIMUM OF FORTY-EIGHT HOURS ADVANCE NOTICE IS REQUIRED. MEMBERS OF J.U.L.I.E. KNOWN TO BE WITHIN THE LIMITS OF THE IMPROVEMENT ARE:
 

UTILITY	RELOCATION STATUS
AMEREN IP	PENDING
AT&T	CLEAR
MEDIACOM (CABLE T.V.)	CLEAR
CITY OF OTTAWA (SANITARY & STORM SEWER MAINS)	CLEAR
CITY OF OTTAWA (WATER MAINS)	PENDING - CONTRACTOR TO UNCOVER WATER MAIN AT 4 LOCATIONS PRIOR TO INSTALLATION OF STORM SEWER
NICOR GAS	CONTRACTOR TO UNCOVER GAS MAIN AT 3 LOCATIONS PRIOR TO INSTALLATION OF STORM SEWER
- ABANDONED UNDERGROUND UTILITIES THAT CONFLICT WITH CONSTRUCTION SHALL BE DISPOSED OF OUTSIDE THE LIMITS OF THE RIGHT OF WAY ACCORDING TO ARTICLE 202.03 OF THE STANDARD SPECIFICATIONS.
- THE CONTRACTOR WILL BE FULLY RESPONSIBLE FOR THE RESTORATION OF ANY AND ALL CURB AND GUTTER, DRIVEWAYS, SIDEWALKS, PARKING LOTS AND STREETS DAMAGED OR DESTROYED DURING THE CONSTRUCTION OF THIS PROJECT. ALL CURB AND GUTTER, DRIVEWAYS, SIDEWALKS, PARKING LOTS AND STREETS DAMAGED BY THIS CONTRACTOR'S WORK WILL BE REPAIRED OR REPLACED.

## LEGEND

	PROPOSED STORM SEWER
	EXISTING STORM SEWER
	EXISTING SANITARY SEWER
	ROAD CENTERLINE
	EXISTING WATER MAIN
	EXISTING GAS MAIN
	EXISTING FENCE LINE
	R.O.W. LINE
	EDGE OF ROAD
	TELEPHONE PEDESTAL
	EXISTING INLET/MANHOLE W/TY. 8 GRATE
	EXISTING CURB INLET
	LIGHT POLE
	WATER VALVE
	FIRE HYDRANT
	POWER POLE
	GUY WIRE
	DECIDUOUS TREE/W DIAMETER
	EVERGREEN TREE
	PROPOSED TREE REMOVAL
	SIGN
	MANHOLE
	CONCRETE
	GRAVEL
	PROPOSED MANHOLE
	PROPOSED CURB INLET
	PROPOSED INLET W/ TY. 8 GRATE
	PROPOSED DETECTABLE WARNING
	PAVEMENT CORE & NUMBER
	HMA REMOVAL 1-1/4"
	HMA REMOVAL 2"

# SUMMARY OF QUANTITIES

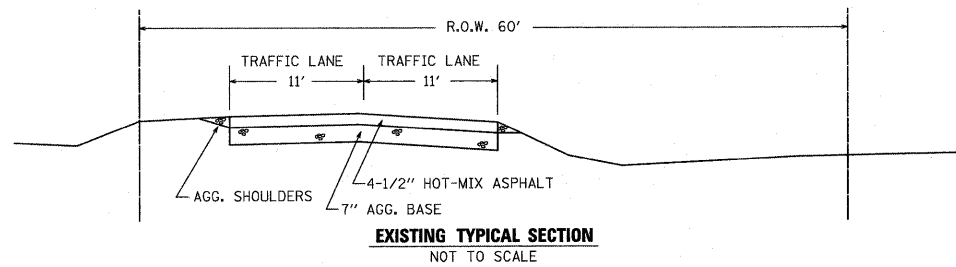
CODE NUMBER	PAY ITEM	UNIT	0004 QUANTITY
20100210	TREE REMOVAL (OVER 15 UNITS DIAMETER)	UNIT	272
* 20200100	EARTH EXCAVATION	CU YD	2,252
20800150	TRENCH BACKFILL	CU YD	45
21101615	TOPSOIL FURNISH AND PLACE, 4"	SQ YD	1,260
25000100	SEEDING, CLASS 1	ACRE	0.26
25000400	NITROGEN FERTILIZER NUTRIENT	POUND	23
25000500	PHOSPHOROUS FERTILIZER NUTRIENT	POUND	23
25000600	POTASSIUM FERTILIZER NUTRIENT	POUND	23
25100630	EROSION CONTROL BLANKET	SQ YD	1,260
28000400	PERIMETER EROSION BARRIER	FOOT	379
28000500	INLET AND PIPE PROTECTION	EACH	5
35100100	AGGREGATE BASE COURSE, TYPE A	TON	2,660
35101400	AGGREGATE BASE COURSE, TYPE B	TON	130
40600100	BITUMINOUS MATERIALS (PRIME COAT)	GALLON	1,660
40600300	AGGREGATE (PRIME COAT)	TON	6
40600625	LEVELING BINDER (MACHINE METHOD), N50	TON	70
40603000	HOT-MIX ASPHALT BINDER COURSE, IL-12.5, N50	TON	570
40603310	HOT-MIX ASPHALT SURFACE COURSE, MIX "C", N50	TON	370
40800050	INCIDENTAL HOT-MIX ASPHALT SURFACING	TON	76
42300300	PORTLAND CEMENT CONCRETE DRIVEWAY PAVEMENT, 7 INCH	SO YD	111
42400100	PORTLAND CEMENT CONCRETE SIDEWALK 4 INCH	SQ FT	8,531
* 42400800	DETECTABLE WARNINGS	SQ FT	177
44000154	HOT-MIX ASPHALT SURFACE REMOVAL, 1-1/4"	SO YD	211
44000157	HOT-MIX ASPHALT SURFACE REMOVAL, 2"	SO YD	1,370
44000200	DRIVEWAY PAVEMENT REMOVAL	SO YD	158
44000500	COMBINATION CURB AND GUTTER REMOVAL	FOOT	576
44000600	SIDEWALK REMOVAL	SQ FT	2,177
44201313	CLASS C PATCHES, TYPE I, 7"	SO YD	4
44201317	CLASS C PATCHES, TYPE II, 7"	SO YD	6
50105220	PIPE CULVERT REMOVAL	FOOT	16
* 55080040	STORM SEWERS, CLASS B, TYPE 1 10"	FOOT	81
* 55080050	STORM SEWERS, CLASS B, TYPE 1 12"	FOOT	132
55100300	STORM SEWER REMOVAL 8"	FOOT	4
55100400	STORM SEWER REMOVAL 10"	FOOT	4
55100500	STORM SEWER REMOVAL 12"	FOOT	7
60218400	MANHOLES, TYPE A, 4' - DIAMETER, TYPE 1 FRAME, CLOSED LID	EACH	1
60235700	INLETS, TYPE A, TYPE 3 FRAME & GRATE	EACH	7
60255500	MANHOLES TO BE ADJUSTED	EACH	7
60255800	MANHOLES TO BE ADJUSTED WITH NEW TYPE 1 FRAME, CLOSED LID	EACH	4
60260100	INLETS TO BE ADJUSTED	EACH	1
60260400	INLETS TO BE ADJUSTED WITH NEW TYPE 1 FRAME, CLOSED LID	EACH	1
60260500	INLETS TO BE ADJUSTED WITH NEW TYPE 3 FRAME AND GRATE	EACH	3
60266600	VALVE BOXES TO BE ADJUSTED	EACH	2
60300305	FRAMES AND LIDS TO BE ADJUSTED	EACH	1
* 60500040	REMOVING MANHOLES	EACH	1
* 60500060	REMOVING INLETS	EACH	4
60604400	COMBINATION CONCRETE CURB AND GUTTER, TYPE B-6.18	FOOT	2,323
60605000	COMBINATION CONCRETE CURB AND GUTTER, TYPE B-6.24	FOOT	27
66300105	CALCIUM CHLORIDE APPLIED	TON	2
67100100	MOBILIZATION	L SUM	1
70102620	TRAFFIC CONTROL AND PROTECTION, STANDARD 701501	L SUM	1
△ 78000400	THERMOPLASTIC PAVEMENT MARKING - LINE 6"	FOOT	760
△ 78000600	THERMOPLASTIC PAVEMENT MARKING - LINE 12"	FOOT	231
△ 78000650	THERMOPLASTIC PAVEMENT MARKING - LINE 24"	FOOT	78
* X6023501	INLETS, TYPE A, WITH SALVAGED GRATE	EACH	3
* X7010216	TRAFFIC CONTROL AND PROTECTION (SPECIAL)	L SUM	1
* X7240505	RELOCATE SIGN PANEL AND POST	EACH	8
* X6025800	MANHOLES TO BE ADJUSTED WITH NEW TYPE 1 FRAME, CLOSED LID	EACH	1

\* SEE SPECIAL PROVISIONS  
 △ SPECIALTY ITEMS

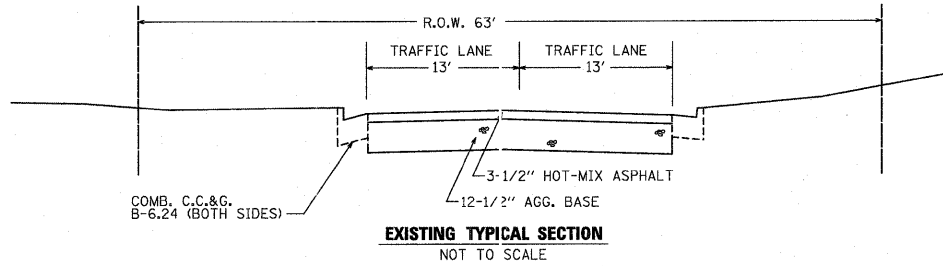
**ADAMS ST. WIDENING AND RESURFACING**

F.A.U. ROUTE NO.	SECTION	ILLINOIS PROJECT	CONTRACT NO.	COUNTY	TOTAL SHEETS	SHEET NUMBER
6039	09-00163-00-WR	M-5052(027)	87511	LASALLE	13	3

**ADAMS STREET  
STATION 0+85 TO STATION 4+55**



**ADAMS STREET  
STATION 10+80 TO STATION 14+05**



**THICKNESS CHECKS & DYNAMIC PENETROMETER ANALYSIS**

Core Number	Location Station - Offset	Bituminous	Aggregate Thickness	Subsoil	12" to 18" IBV	18" to 24" IBV	24" to 30" IBV	30" to 36" IBV
C-1	1+50 8' LT	4.75"	7.25"	Gravel	28.2	21.6	4.2	2.3
C-2	5+50 8' LT	3.25"	12.75"	Blk/Br SIC		23.8	21.6	10.4
C-3	9+50 3' RT	3.75"	7.25"	Black SIC	8.2	10.4	8.2	10.4
C-4	13+00 4' RT	3.50"	>12.5"	NA		52.7	14.9	6.1

Comments: IBV = Immediate Bearing Value

**PAVEMENT DESIGN DATA**

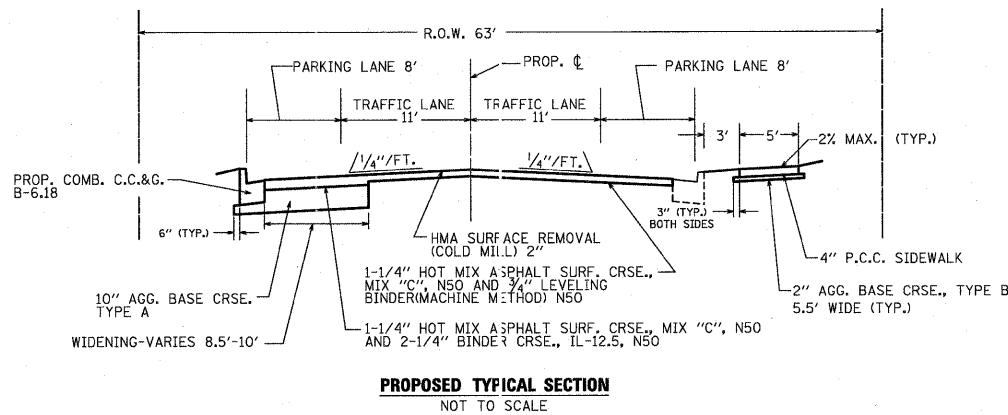
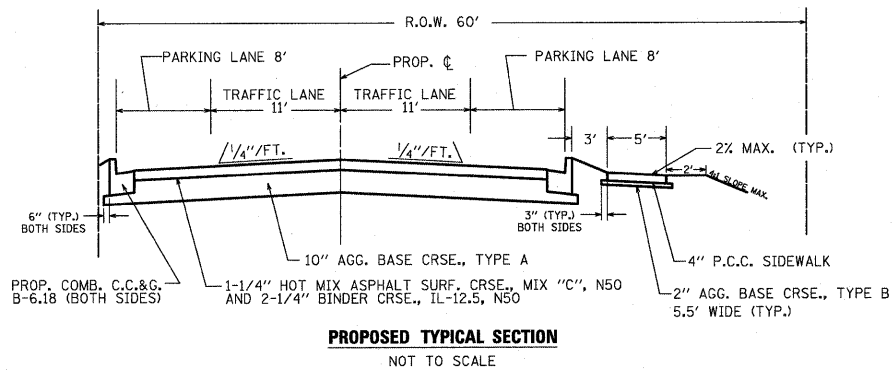
CONVENTIONAL FLEXIBLE PAVEMENT WITH A 80,000 LB. LOAD LIMIT

CLASS III ROAD  
ADT (2011) 1,500  
DESIGN SPEED 30 MPH  
DESIGN PERIOD - 20 YEARS  
SDT (2022) - 1,900  
PERCENT OF SDT PV = 97.0% SU = 2.5% MU = 0.5%  
PV = 1,843 SU = 47 MU = 10  
TRAFFIC FACTOR = 0.092 (BLRS MANUAL FIGURE 37-3C)  
HMA THICKNESS REQUIRED = 3-1/8" (BLRS MANUAL FIGURE 37-3J)  
PAVEMENT STRUCTURE ENHANCEMENT FOR POOR BASE (BLRS MANUAL FIGURE 37-3K)  
INCREASE HMA THICKNESS BY 3/8"  
INCREASE TYPE A AGGREGATE BASE THICKNESS BY 2"  
FINAL PAVEMENT STRUCTURE = 3-1/2" HMA  
10" AGGREGATE BASE TYPE A

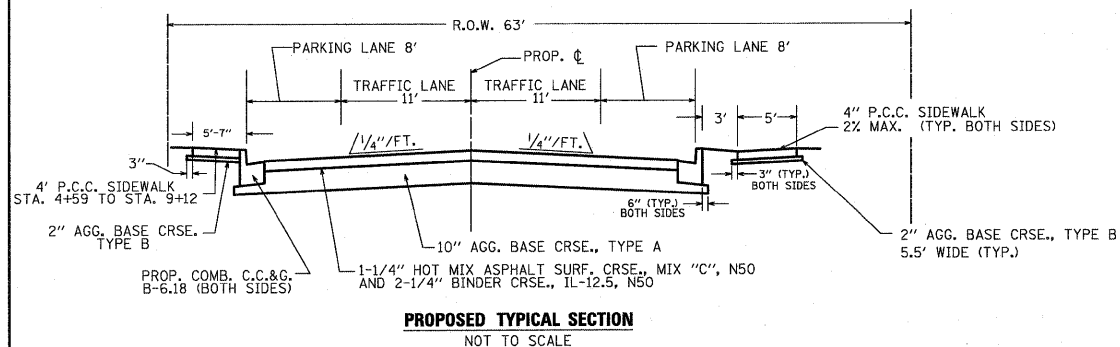
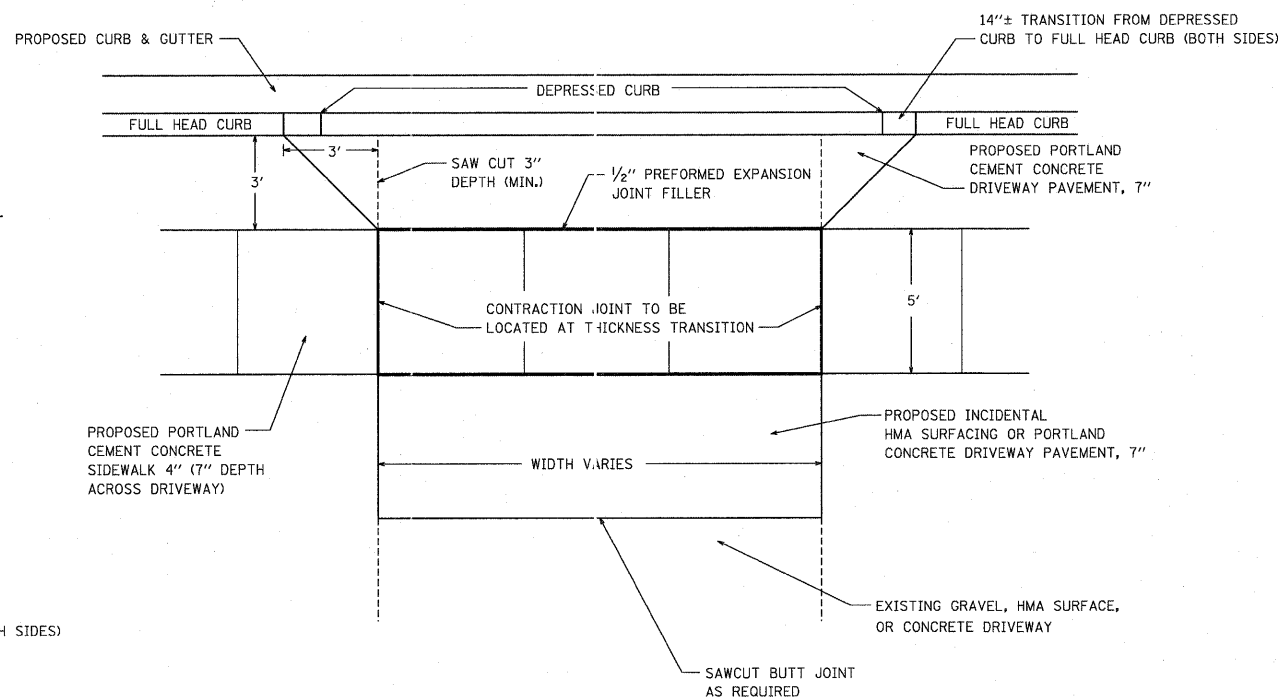
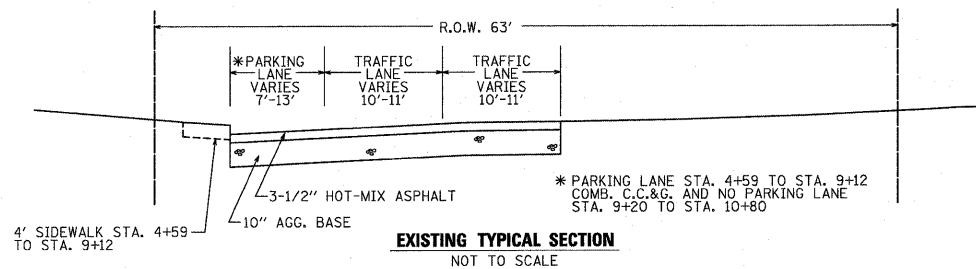
**HOT-MIX ASPHALT SPECIFICATIONS**

	HMA BINDER COURSE	HMA LEVEL BINDER	HMA SURFACE
PG Grade	PG64-22	PG64-22	PG64-22
Design Air Voids	4.0% @ N50	4.0% @ N50	4.0% @ N50
Mixture Composition	IL 12.5	IL 9.5	IL 9.5
Friction Aggregate			Mixture C
Density Test Method	Nuclear/Cores	Satisfaction of Engineer	Nuclear/Cores

Note: Material shall be compacted to 93.0-97.4 percent of the maximum theoretical density, except that when placed as first lift on an unimproved subgrade the minimum percent compaction shall be 92.0 percent. The maximum theoretical density shall be determined from the moving average as specified in the QC/QA Specification.



**ADAMS STREET  
STATION 4+55 TO STATION 10+80**



ADAMS ST. WIDENING AND RESURFACING

F.A.U. ROUTE NO.	SECTION	ILLINOIS PROJECT	CONTRACT NO.	COUNTY	TOTAL SHEETS	SHEET NUMBER
6039	09-00163-00-WR	M-5052(027)	87511	LASALLE	13	4

# SCHEDULE OF QUANTITIES

STATION	LT./RT.	P.C.C. DRIVEWAY PAVEMENT 7"	DRIVEWAY PAVEMENT REMOVAL	CLASS C PATCHES TYPE I	CLASS C PATCHES TYPE II
		SQ YD	SQ YD	SQ YD	SQ YD
2+61	RT.	10.8	25.3		
4+82	RT.	42.8	69.3		
6+05	RT.	14.8	14.5		
6+75	RT.	8.9			
9+80	RT.	16.2	31.3		
11+02	RT.			4.0	
11+30	RT.				6.0
12+15	RT.	9.2	17.3		
13+35	RT.	4.3			
13+97	RT.	4.4			
<b>TOTAL</b>		<b>111.4</b>	<b>157.7</b>	<b>4.0</b>	<b>6.0</b>

RELOCATE SIGN PANEL & POST		
STATION	LT./RT.	EACH
1+00	LT.	1
3+49	RT.	1
3+93	RT.	1
3+95	RT.	1
7+72	RT.	1
8+01	RT.	1
9+56	LT.	1
13+39	LT.	1
<b>TOTAL</b>		<b>8</b>

TREE REMOVAL (OVER 15 UNITS DIAMETER)		
STATION	LT./RT.	UNIT
3+99	RT.	18
5+82	RT.	24
7+93	RT.	46
8+58	RT.	28
8+80	RT.	42
9+90	LT.	50
10+47	RT.	41
10+71	RT.	23
<b>TOTAL</b>		<b>272</b>

STA. TO STA.	LT./RT.	LEVELING BINDER (MACHINE METHOD) N50	HMA BINDER COURSE IL-12.5, N50	HMA SURF. CRSE. MIX "C"	INCIDENTAL HMA SURFACING	HMA SURFACE REMOVAL 1-1/4"	HMA SURFACE REMOVAL 2"	EARTH EXCAVATION
		TON	TON	TON	TON	SQ YD	SQ YD	CU YD
0+65	McKINLEY INT.							12.9
0+90	McKINLEY INT.		4.4		2.4	70.2		
1+00 TO 10+80	MAINLINE		490.9					1,973.1
1+00 TO 14+05	MAINLINE			370.0				
2+61	DRIVE RT.							0.9
2+86	DRIVE LT.		0.4		2.3	24.8		
3+81	VIEW INT.		11.4		9.1	27.0		34.0
4+82	DRIVE RT.							10.0
6+05	DRIVE RT.							2.5
6+50	DRIVE LT.		7.5		7.0	14.4		22.3
6+75	DRIVE RT.		0.2		0.4	3.4		1.5
7+56	THOMPSON INT.		13.6		9.7	18.5		40.4
9+80	DRIVE RT.							3.2
10+68	DRIVE LT.		0.4		1.1	10.6		
10+80 TO 13+14	WIDENING		30.7					124.4
10+80 TO 14+05	MAINLINE W/ 4H RD. & ERICKSON INT.	70.0					1,370.0	
11+18	ERICKSON INT.		0.7		9.2			2.8
12+15	DRIVE RT.							0.8
13+35	DRIVE RT.		0.6		0.4			0.4
13+39	DRIVE LT.				3.5	42.0		
13+61	4H RD. INT.		9.0		30.7			22.8
13+97	DRIVE RT.							0.4
<b>TOTAL</b>		<b>70.0</b>	<b>569.8</b>	<b>370.0</b>	<b>75.8</b>	<b>210.9</b>	<b>1,370.0</b>	<b>2,252.4</b>

STA. TO STA.	LT./RT.	P.C.C. SIDEWALK 4"	SIDEWALK REMOVAL	DETECTABLE WARNINGS
		SQ FT	SQ FT	SQ FT
0+66	3+68	RT.	1,536.6	
0+70		RT.		39.0
0+72		RT.		95.6
3+62		RT.		15.6
4+01	7+39	RT.	1681.2	
4+06		RT.		15.6
4+59	6+36	LT.	856.6	752.2
5+44		LT.	13.3	13.3
6+25		LT.		15.5
6+62	9+12	LT.	1,261.3	991.9
6+69		LT.		10.0
7+08		RT.	20.1	26.3
7+29		LT.		10.0
7+33		RT.		27.7
7+52		LT.	41.5	41.5
7+73	10+95	RT.	1,592.0	
7+78		RT.		15.6
8+66		LT.	35.2	35.2
8+94		RT.	31.2	63.3
9+42		RT.	47.4	54.1
10+40		RT.	61.6	46.0
10+90		RT.		14.3
11+39	14+03	RT.	1,309.6	
11+44		RT.		13.3
11+79		RT.	22.2	17.2
13+08		RT.	21.4	40.6
<b>TOTAL</b>		<b>8,531.2</b>	<b>2,177.2</b>	<b>176.6</b>

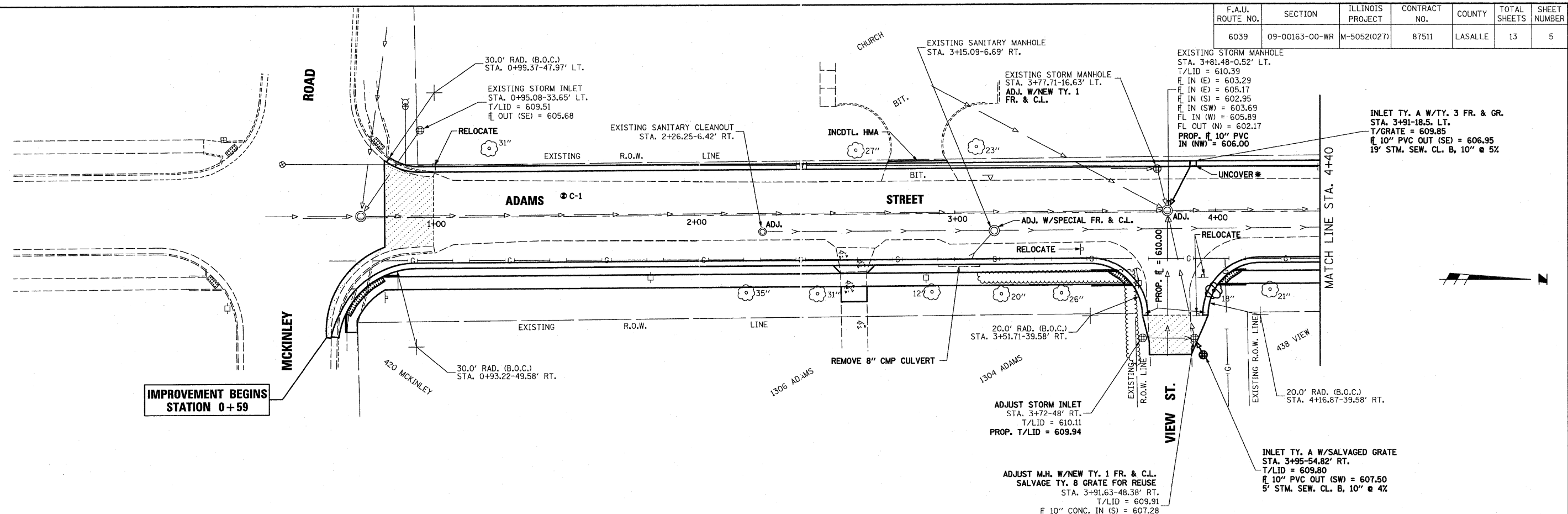
STA. TO STA.	LT./RT.	COMB. C.C. & G. B-6.24	COMB. C.C. & G. B-6.18	COMB. C.C. & G. REMOVAL
		FOOT	FOOT	FOOT
0+75				60
0+64	3+72	RT.		
0+83	6+36	LT.	561	
0+90		LT.		19
3+97	7+44	RT.	370	
6+36		LT.		6
6+63	13+39	LT.		698
7+69	10+96	RT.	361	
9+21	13+42	LT.		434
10+94		RT.		30
11+37		RT.	9	9
11+41		RT.	13	13
13+77		RT.	5	5
<b>TOTAL</b>		<b>27</b>	<b>2,323</b>	<b>576</b>

STATION	STORM SEWERS CL. B TY. 1, 10"	STORM SEWERS CL. B TY. 1, 12"	STORM SEWER REMOVAL 8"	STORM SEWER REMOVAL 10"	STORM SEWER REMOVAL 12"	PIPE CULVERT REMOVAL	MANHOLE TY. A 4' DIA., TYPE 1 FRAME, CLOSED LID	INLETS TY. A TY. 3 FRAME & GRATE	INLETS TY. A WITH SALVAGED GRATE	REMOVING INLETS	REMOVING MANHOLES	TRENCH BACKFILL	INLET & PIPE PROTECTION
	FOOT	FOOT	FOOT	FOOT	FOOT	FOOT	EACH	EACH	EACH	EACH	EACH	CU YD	EACH
3+01	RT.					16							1
3+71	RT.											4.6	
3+88	LT.	19						1				0.8	
3+93	RT.	5							1				1
3+95	RT.												
6+18	LT.							1					
6+33	LT.		34									6.4	
6+50	LT.		18					1				3.4	
6+64	LT.		31									6.5	
6+79	RT.								1				
6+63	RT.												
6+65	LT.						1						
7+43	RT.								1				
7+44	RT.	12										2.0	1
7+52	LT.										1		
7+72	RT.												1
9+05	LT.							1					
9+10	LT.		18									6.2	
10+84	RT.									1			
11+29	LT.				4								
11+30	LT.												
11+31	LT.		13					1				2.9	
13+26	LT.							1					
13+31	LT.		18									4.4	
13+36	LT.									1			
13+37	LT.								1				1
13+38	LT.					7							
13+57	LT.	45										8.0	
13+76	LT.			4									
<b>TOTAL</b>		<b>81</b>	<b>132</b>	<b>4</b>	<b>4</b>	<b>7</b>	<b>1</b>	<b>7</b>	<b>3</b>	<b>4</b>	<b>1</b>	<b>45.2</b>	<b>5</b>

STATION	MANHOLES TO BE ADJUSTED	MANHOLES TO BE ADJUSTED W/NEW TY. 1 FRAME	MANHOLES TO BE ADJUSTED W/NEW SPECIAL FRAME	INLETS TO BE ADJUSTED	INLETS TO BE ADJUSTED W/NEW TY. 1 FRAME	INLETS TO BE ADJUSTED W/NEW TY. 3 FRAME & GRATE	VALVE BOXES TO BE ADJUSTED	FRAMES & LIDS TO BE ADJUSTED
	EACH	EACH	EACH	EACH	EACH	EACH	EACH	EACH
2+26	RT.							1
3+15	RT.		1					
3+71	RT.			1				
3+78	LT.		1					
3+81	LT.	1						
3+92	RT.		1					
7+16	RT.		1					
7+44	RT.				1			
7+50	LT.	1						
7+55	LT.						1	
7+58	LT.						1	
8+18	RT.	1						
9+14	LT.			1				
9+16	LT.	1						
10+38	RT.	1						
10+98	RT.					1		
11+15	LT.		1					
11+31	LT.	1						
11+37	RT.					1		
13+77	LT.	1						
<b>TOTAL</b>	<b>7</b>	<b>4</b>	<b>1</b>	<b>1</b>	<b>1</b>	<b>3</b>	<b>2</b>	<b>1</b>

**ADAMS ST. WIDENING AND RESURFACING**

F.A.U. ROUTE NO.	SECTION	ILLINOIS PROJECT	CONTRACT NO.	COUNTY	TOTAL SHEETS	SHEET NUMBER
6039	09-00163-00-WR	M-5052(027)	87511	LASALLE	13	5



**IMPROVEMENT BEGINS STATION 0+59**

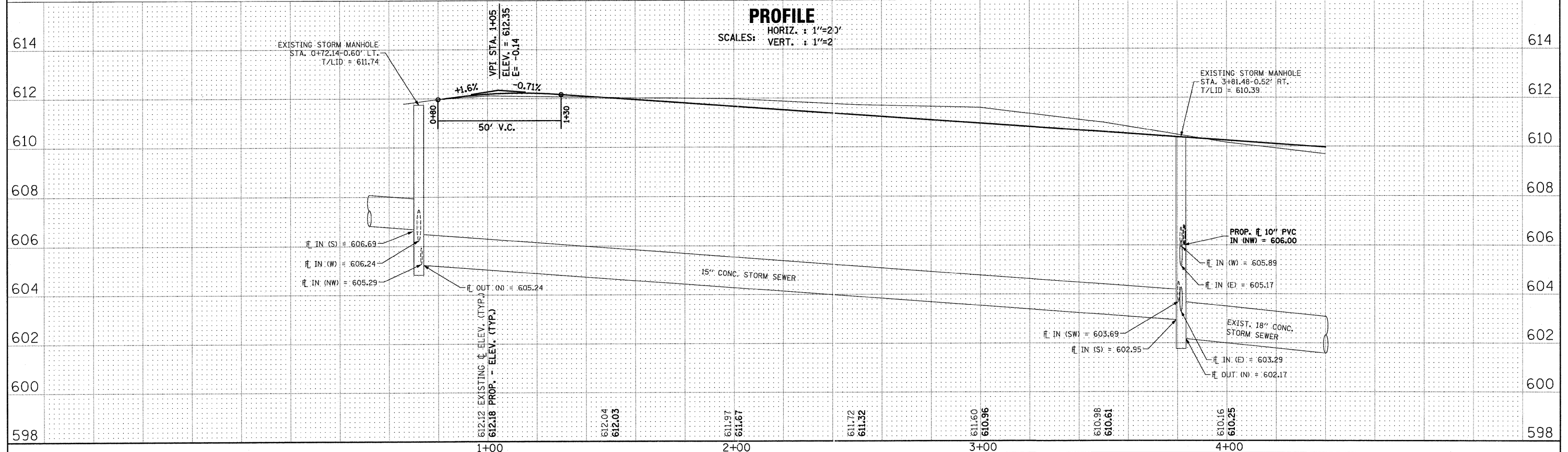
**PLAN**

SCALE: 1"=20'

\* NOTE: PRIOR TO CONSTRUCTION UNCOVER EXISTING GAS MAIN OR EXISTING WATER MAIN TO DETERMINE LOCATION & ELEVATION. THE ENGINEER WILL MAKE NECESSARY DESIGN ADJUSTMENTS TO RESOLVE CONFLICTS.

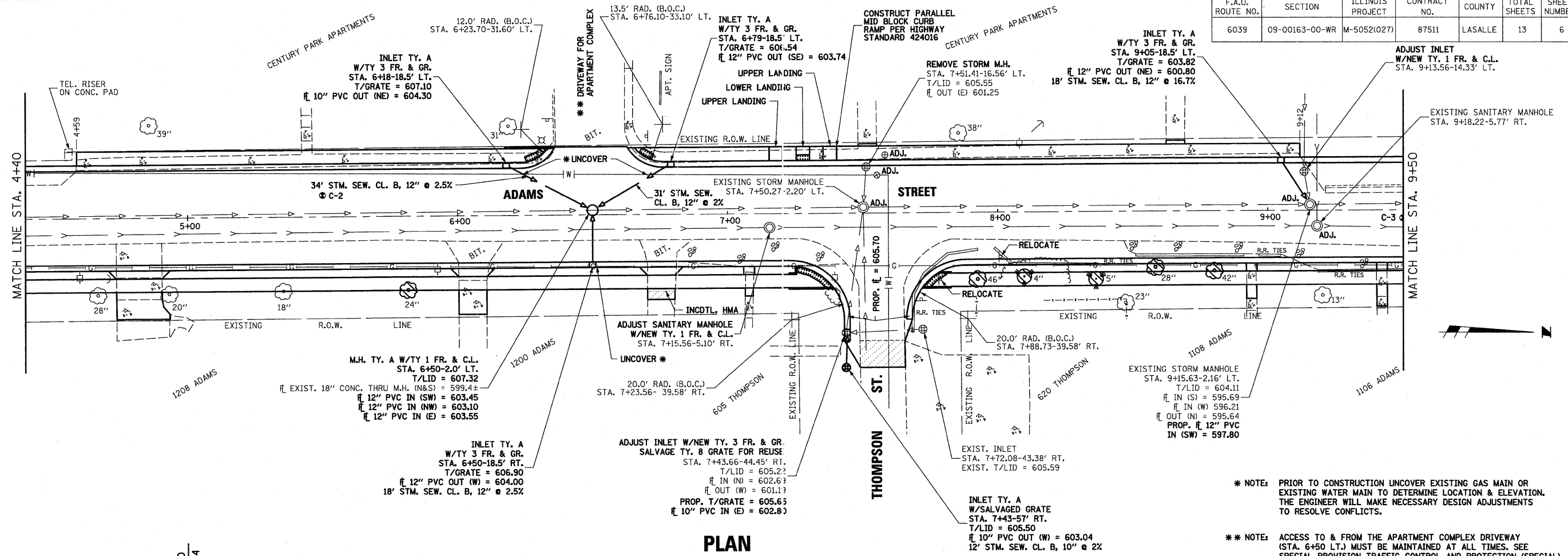
**PROFILE**

HORIZ. : 1"=20'  
VERT. : 1"=2'



**ADAMS ST. WIDENING AND RESURFACING**

F.A.U. ROUTE NO.	SECTION	ILLINOIS PROJECT	CONTRACT NO.	COUNTY	TOTAL SHEETS	SHEET NUMBER
6039	09-00163-00-WR	M-5052(027)	87511	LASALLE	13	6



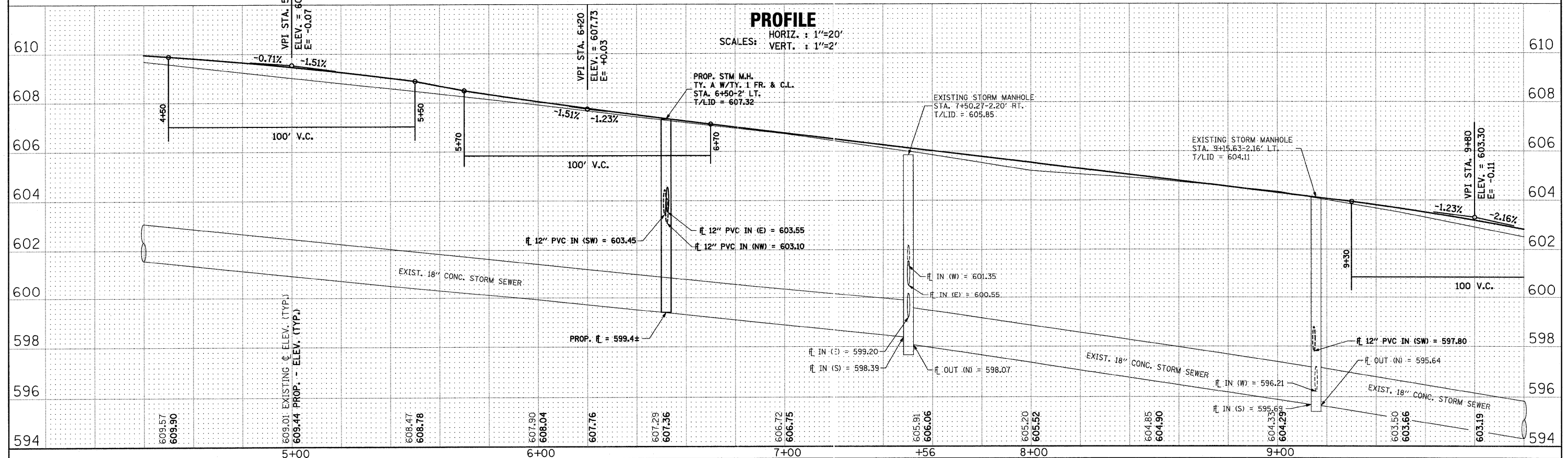
**PLAN**

SCALE: 1"=20'

- \* NOTE: PRIOR TO CONSTRUCTION UNCOVER EXISTING GAS MAIN OR EXISTING WATER MAIN TO DETERMINE LOCATION & ELEVATION. THE ENGINEER WILL MAKE NECESSARY DESIGN ADJUSTMENTS TO RESOLVE CONFLICTS.
- \*\* NOTE: ACCESS TO & FROM THE APARTMENT COMPLEX DRIVEWAY (STA. 6+50 LT.) MUST BE MAINTAINED AT ALL TIMES. SEE SPECIAL PROVISION TRAFFIC CONTROL AND PROTECTION (SPECIAL)

**PROFILE**

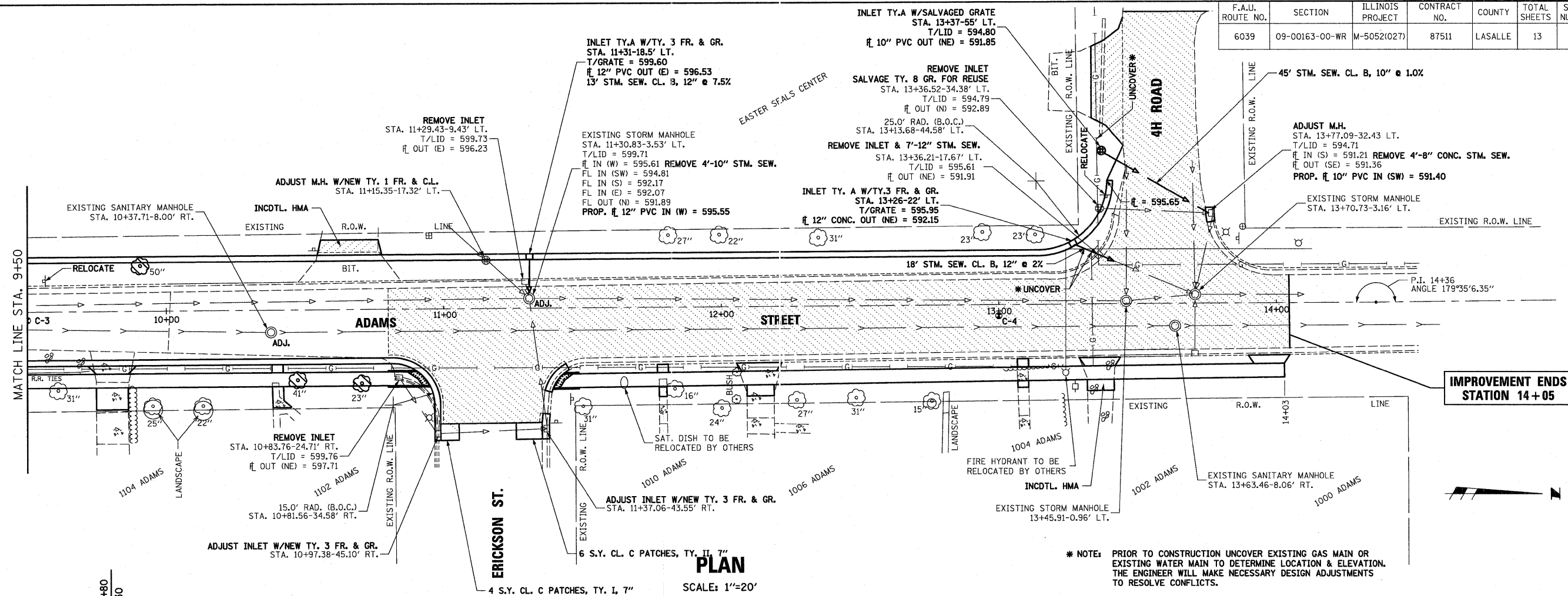
HORIZ. : 1"=20'  
VERT. : 1"=2'





**ADAMS ST. WIDENING AND RESURFACING**

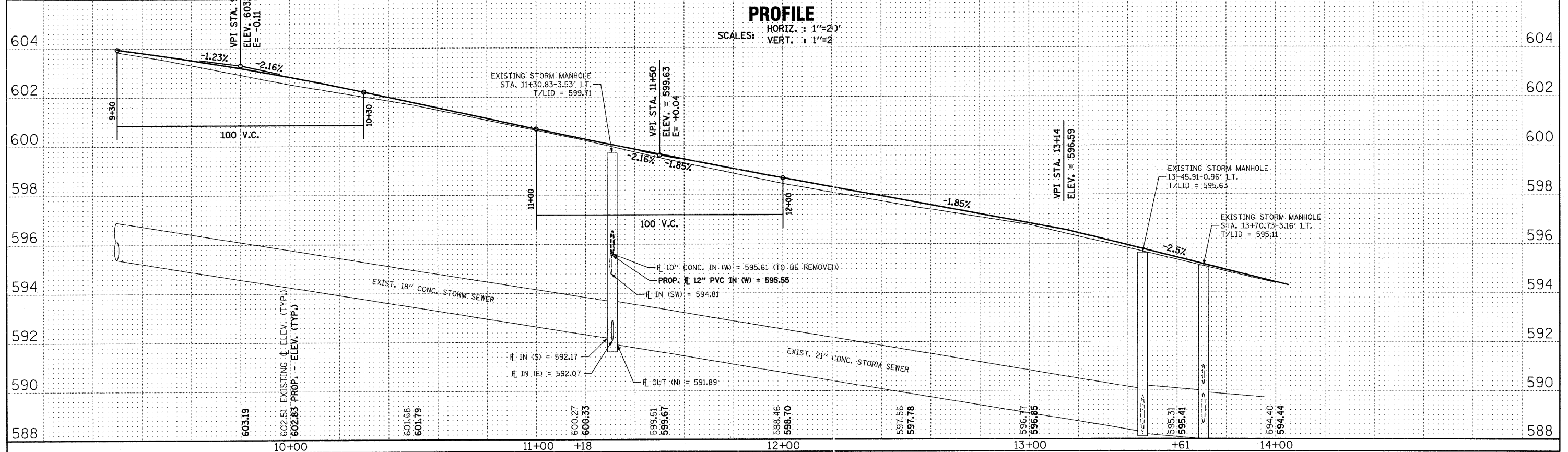
F.A.U. ROUTE NO.	SECTION	ILLINOIS PROJECT	CONTRACT NO.	COUNTY	TOTAL SHEETS	SHEET NUMBER
6039	09-00163-00-WR	M-5052(027)	87511	LASALLE	13	7



**PLAN**

SCALE: 1"=20'

\* NOTE: PRIOR TO CONSTRUCTION UNCOVER EXISTING GAS MAIN OR EXISTING WATER MAIN TO DETERMINE LOCATION & ELEVATION. THE ENGINEER WILL MAKE NECESSARY DESIGN ADJUSTMENTS TO RESOLVE CONFLICTS.

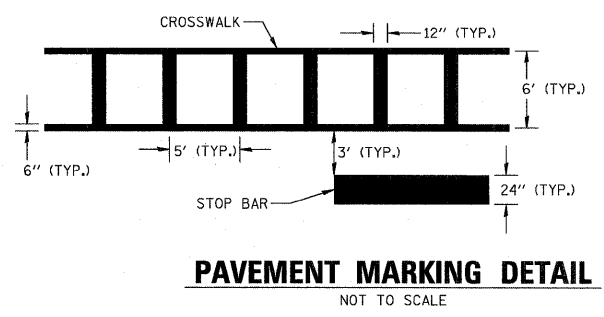
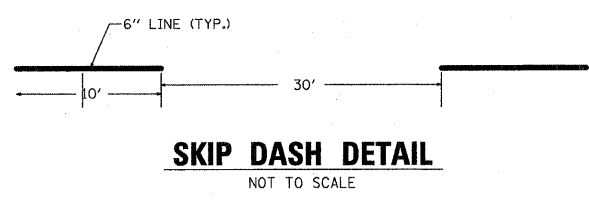
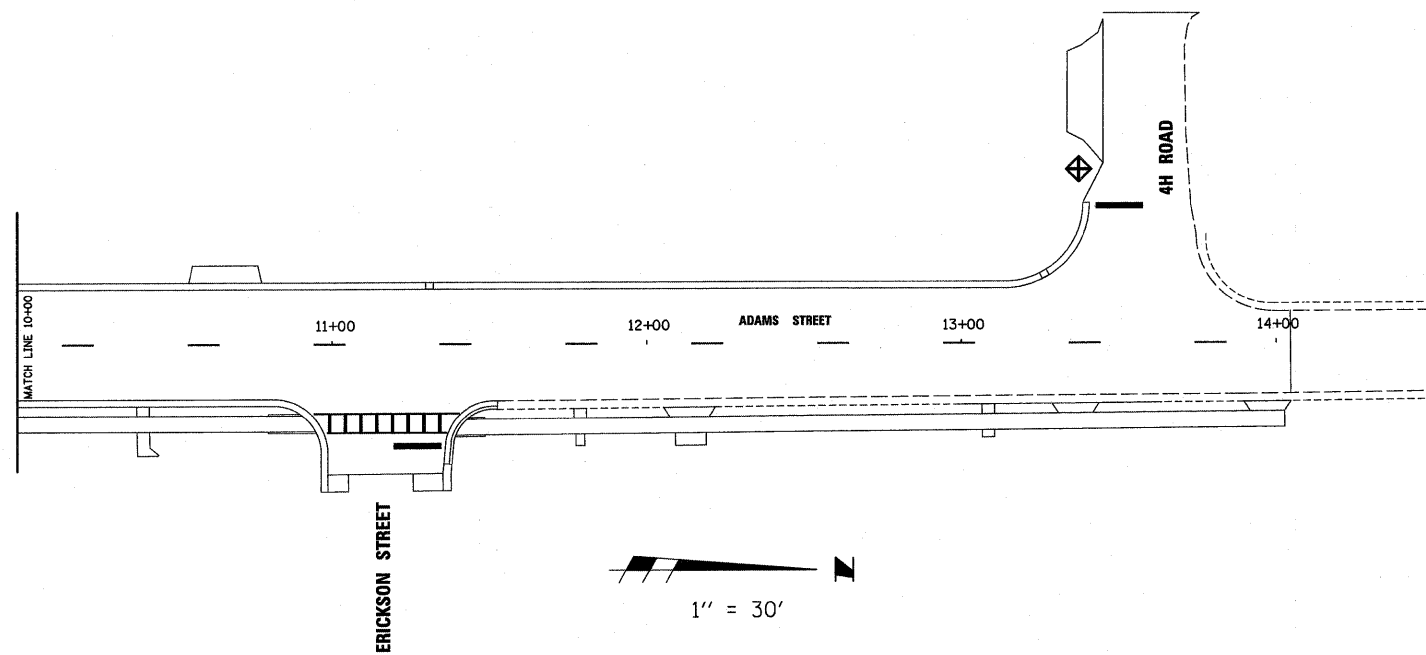
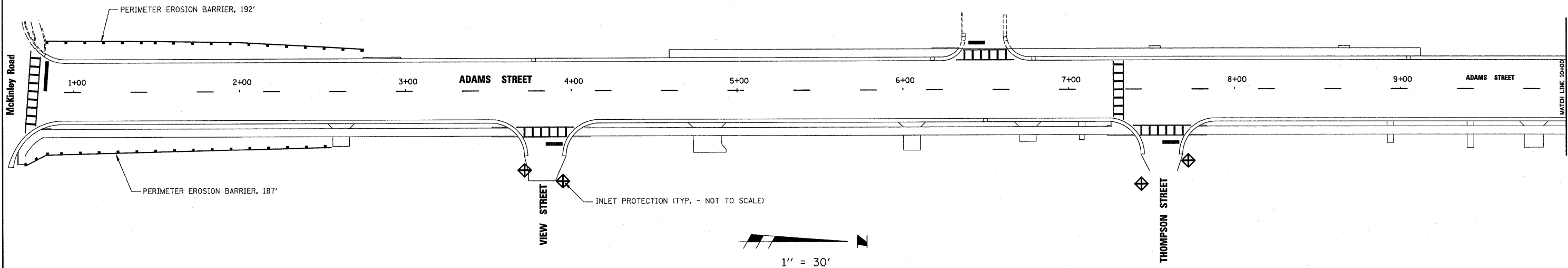


**PROFILE**

HORIZ. : 1"=20'  
VERT. : 1"=2'

F.A.I.L. ROUTE NO.	SECTION	ILLINOIS PROJECT	CONTRACT NO.	COUNTY	TOTAL SHEETS	SHEET NUMBER
6039	09-00163-00-WR	M-5052(027)	87511	LASALLE	13	8

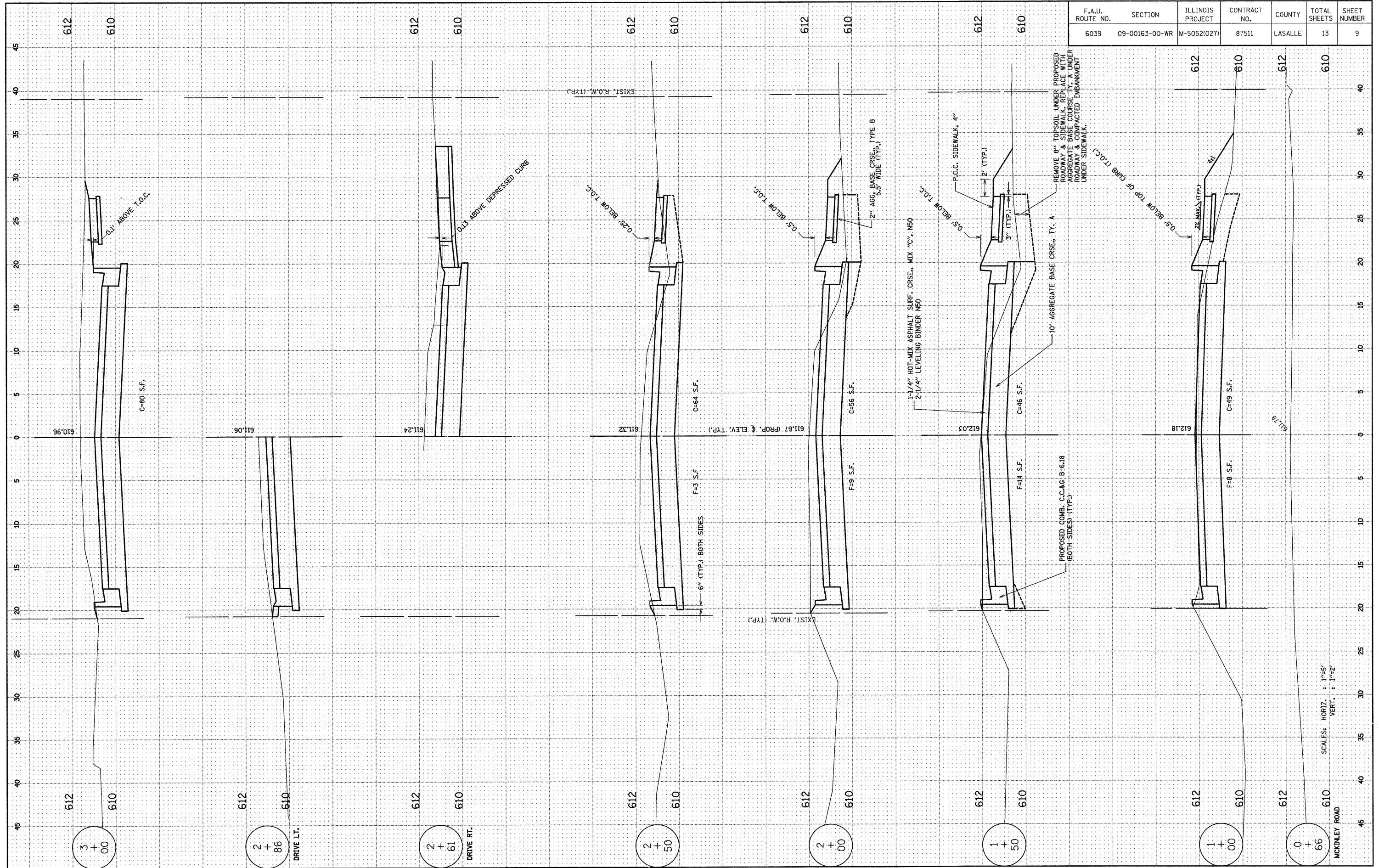
**STORM WATER POLLUTION PREVENTION SITE PLAN  
& PAVEMENT MARKING DETAIL**





ADAMS ST. WIDENING AND RESURFACING

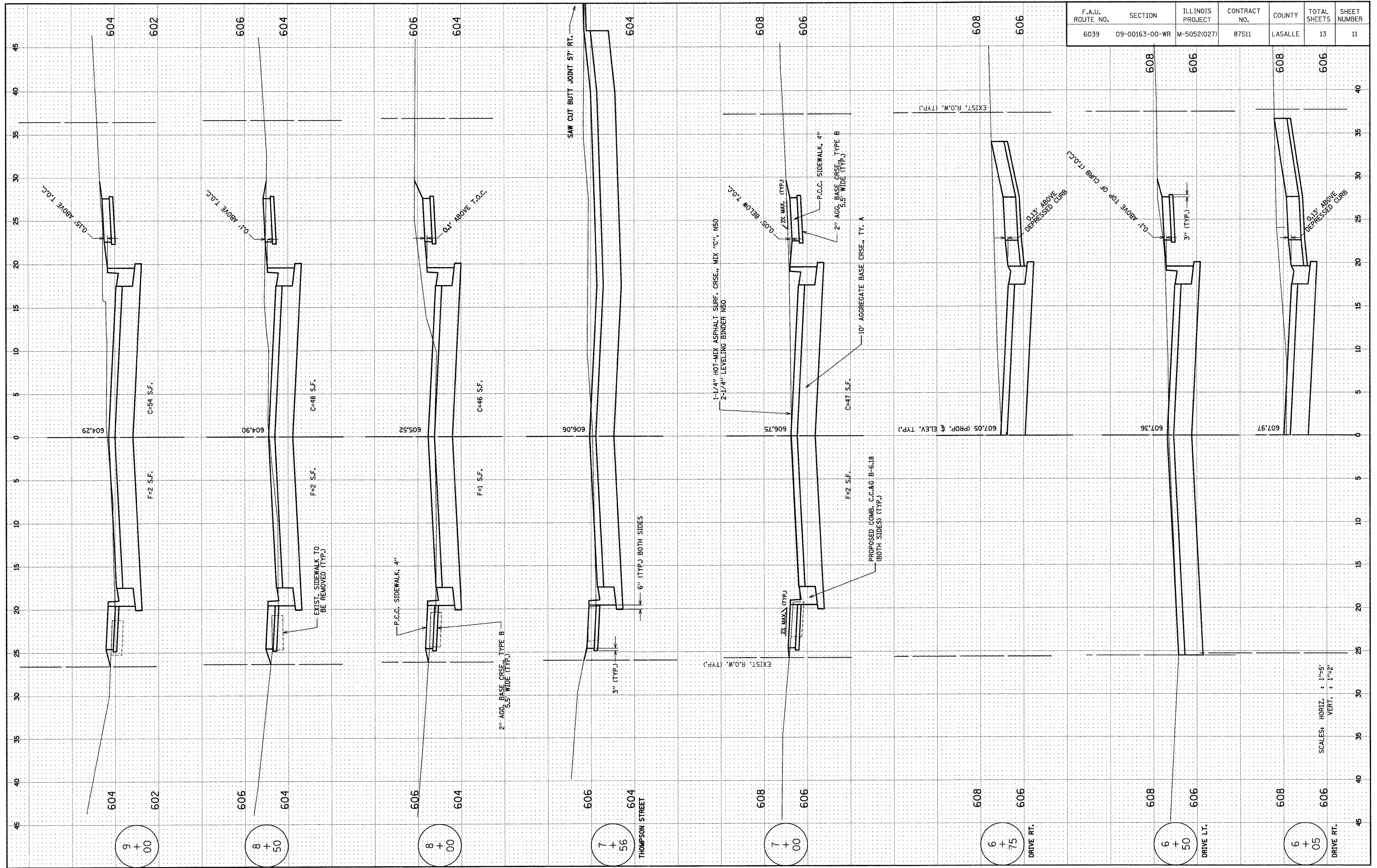
F.A.U. ROUTE NO.	SECTION	ILLINOIS PROJECT	CONTRACT NO.	COUNTY	TOTAL SHEETS	SHEET NUMBER
6039	09-00163-00-WR	M-5052(027)	87511	LASALLE	13	9





ADAMS ST. WIDENING AND RESURFACING

F.A.U. ROUTE NO.	SECTION	ILLINOIS PROJECT	CONTRACT NO.	COUNTY	TOTAL SHEETS	SHEET NUMBER
6039	09-00163-00-WR	M-5052(027)	87511	LASALLE	13	11

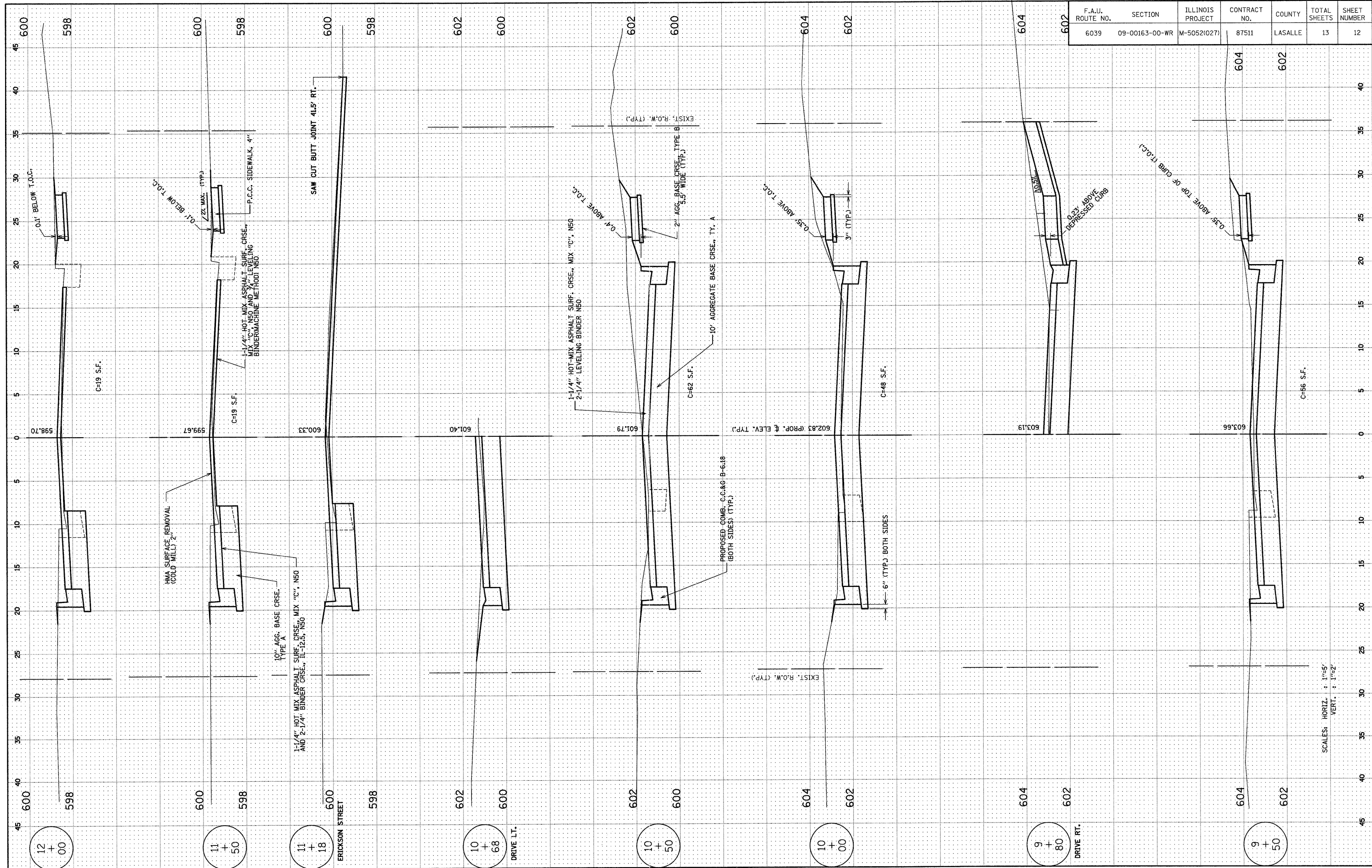


SCALES: HORIZ. : 1"=5'  
VERT. : 1"=2'



ADAMS ST. WIDENING AND RESURFACING

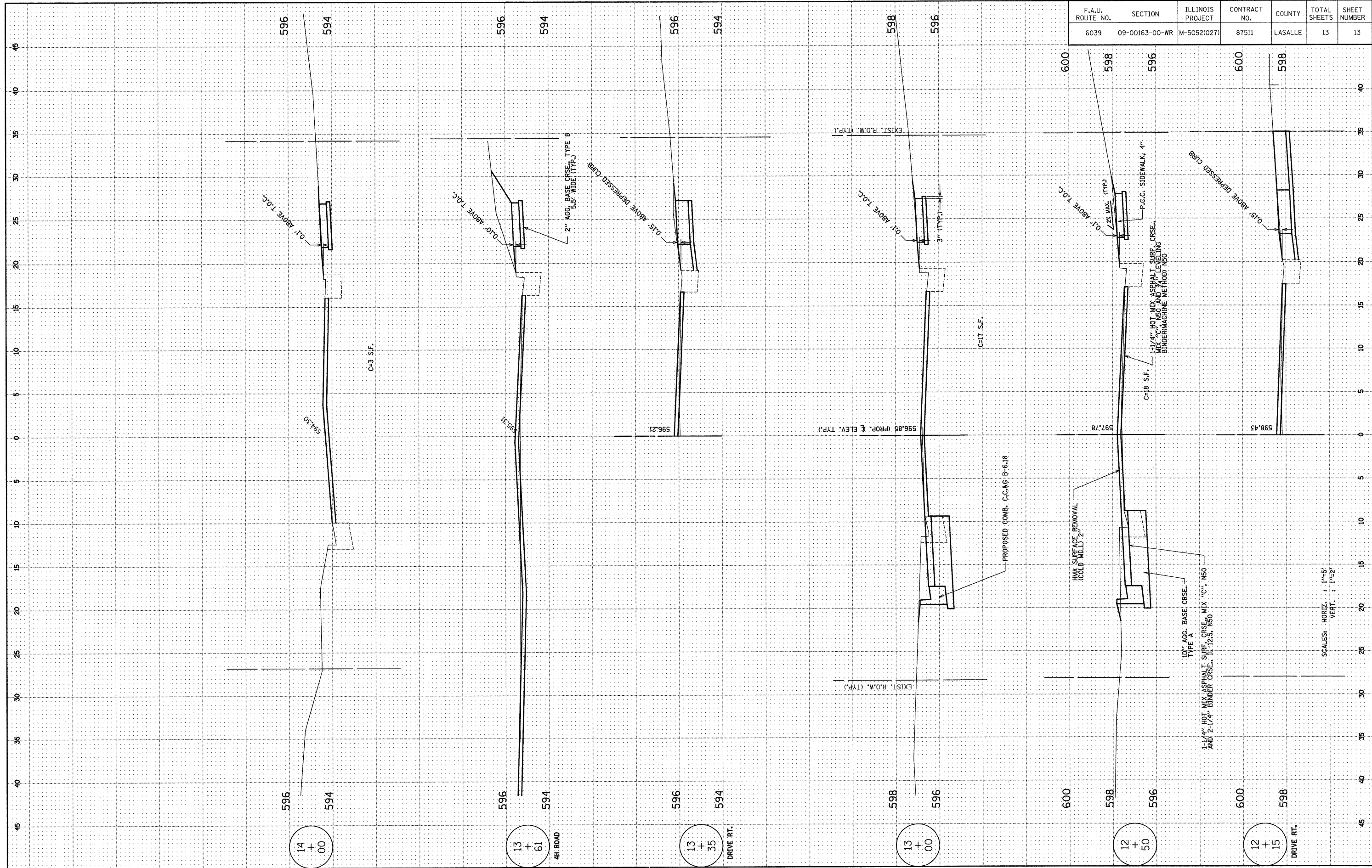
F.A.U. ROUTE NO.	SECTION	ILLINOIS PROJECT	CONTRACT NO.	COUNTY	TOTAL SHEETS	SHEET NUMBER
6039	09-00163-00-WR	M-5052(027)	87511	LASALLE	13	12



SCALES: HORIZ. : 1"=5'  
 VERT. : 1"=2'

ADAMS ST. WIDENING AND RESURFACING

F.A.U. ROUTE NO.	SECTION	ILLINOIS PROJECT	CONTRACT NO.	COUNTY	TOTAL SHEETS	SHEET NUMBER
6039	09-00163-00-WR	M-5052(027)	87511	LASALLE	13	13



SCALES: HORIZ. : 1"=5'  
VERT. : 1"=2'