

F.A.P. RTE.	SECTION	COUNTY	TOTAL SHEETS	SHEET NO.
330	11-00068-00SP	KANKAKEE	16	1
		ILLINOIS	CONTRACT NO. 87514	

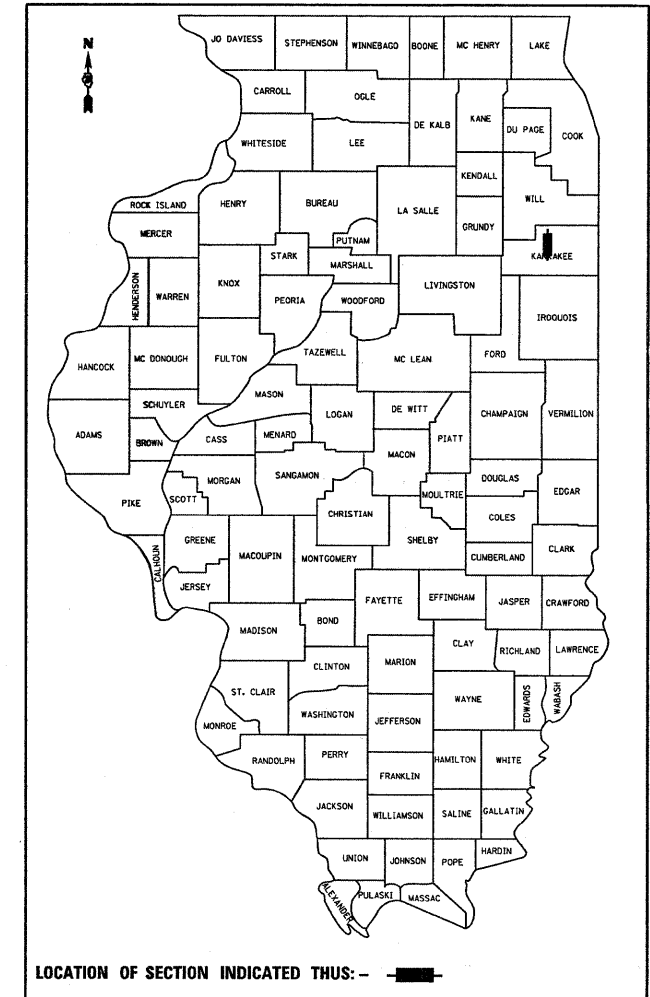
INDEX OF SHEETS

- 1 COVER SHEET
- 2 GENERAL NOTES AND LIST OF STANDARDS
- 3 SUMMARY OF QUANTITIES
- 4 TYPICAL SECTIONS
- 5 SCHEDULES
- 6 SIDEWALK AND HANDICAP RAMP PLAN
- 7 EXISTING TRAFFIC SIGNAL PLAN
- 8 SIGNAL GENERAL NOTES AND QUANTITIES
- 9 TRAFFIC SIGNAL AND DETECTOR LOOP PLAN
- 10 TRAFFIC SIGNAL PLAN
- 11 CABLE PLAN
- 12-13 MAST ARM AND SIGN DETAIL SHEETS
- 14 INTERCONNECT PLAN
- 15 PAVEMENT MARKING SHEET
- 16 PAVEMENT MARKING DETAILS

STATE OF ILLINOIS  
DEPARTMENT OF TRANSPORTATION  
DIVISION OF HIGHWAYS  
**PLANS FOR PROPOSED  
FEDERAL AID HIGHWAY**

**FAP ROUTE 330 (US 45/52)  
JOHN CASEY ROAD  
VILLAGE OF BOURBONNAIS  
SIGNAL MODERNIZATION  
SECTION 11-00068-00-SP  
PROJECT HSIP-5034(025)  
KANKAKEE COUNTY  
C-93-042-12**

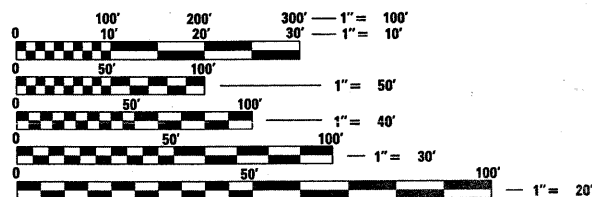
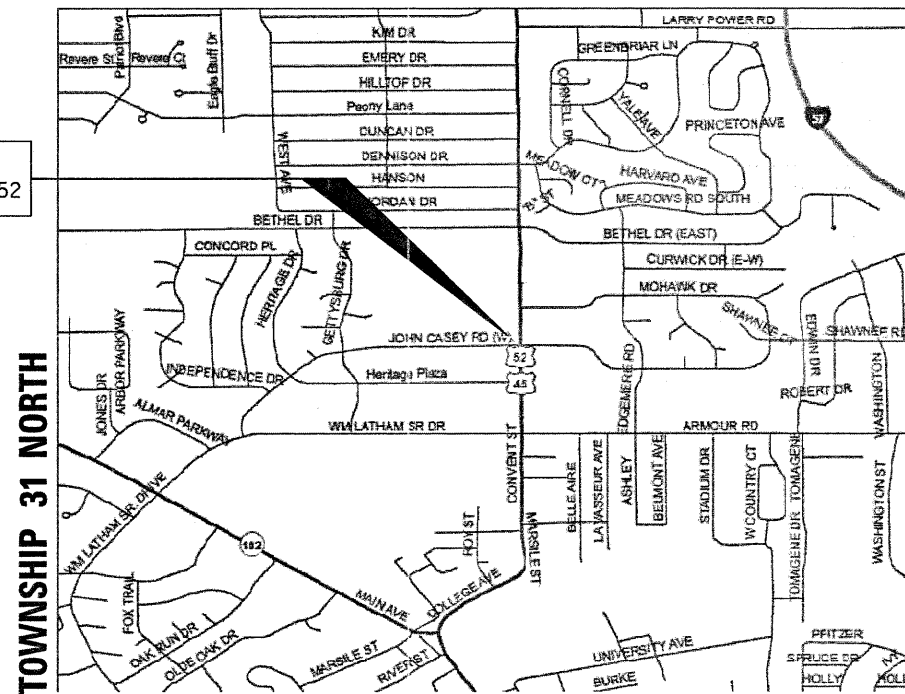
D-93-010-12



FOR LIST OF HIGHWAY STANDARDS, SEE SHEET NO. 2

RANGE 12 EAST

PROJECT LOCATION:  
STA. 130+44.12 US 45/52



FULL SIZE PLANS HAVE BEEN PREPARED USING STANDARD ENGINEERING SCALES. REDUCED SIZED PLANS WILL NOT CONFORM TO STANDARD SCALES. IN MAKING MEASUREMENTS ON REDUCED PLANS, THE ABOVE SCALES MAY BE USED.

J.U.L.I.E.  
JOINT UTILITY LOCATION INFORMATION FOR EXCAVATION  
1-800-892-0123  
OR 811

PROJECT ENGINEER: ROGER BLAKELY  
UNIT CHIEF: SCOTT FERGUSON

GROSS LENGTH = 675 FT. = 0.13 MILE  
NET LENGTH = 675 FT. = 0.13 MILE

**HIGHWAY CLASSIFICATION:**  
OTHER PRINCIPLE ARTERIAL

ADT 2010: 22800  
MU: 474 SU: 1751 PV: 20575  
DESIGN SPEED: 35 MPH

STATE OF ILLINOIS  
DEPARTMENT OF TRANSPORTATION  
DIVISION OF HIGHWAYS

SUBMITTED 2/24 20 12  
Paul Schore  
MAYOR, VILLAGE OF BOURBONNAIS

PASSED 2/24 20 12  
Juzuf  
DISTRICT 3 IMPLEMENTATION ENGINEER

RELEASED FOR EID BASED ON LIMITED REVIEW 2/24 20 12  
W. O. H.  
DEPUTY DIRECTOR OF HIGHWAYS, REGION 2 ENGINEER